

# IFCSUM Forwarding and Consolidation Summary Message

## Introduction:

A message to be used for consolidation purposes from a party arranging forwarding and transport services to the party for which the transport of the consolidated cargo is destined. The message can be used to exchange information concerning the consolidated cargo between forwarders, carriers and agents enabling those parties to handle the consignments included in this consolidation. In addition it can be used for a collection of consignments originating from one shipper for forwarding and transport services.

## Notes:

This guideline is a joint development of Portuguese Customs Administration and the following Port Authorities working in partnership:

- Port Authority of Douro and Leixoes (Administração dos Portos do Douro e Leixões, S.A. - APDL)
- Port Authority of Lisbon (Administração do Porto de Lisboa, S.A. - APL)
- Port Authority of Sines (Administração do Porto de Sines, S.A. - APS)

For the elaboration of this document, the legal requirements of the Portuguese Customs were carefully considered and the message aims "to feed" the Customs Summary Declaration System (SDS) and the Port Authorities Common Platform.

The goal is to provide the definition of the IFCSUM message to be used in the transmission of the vessel manifest by the shipping agents to both mentioned systems, using a single structured message to facilitate international trade.

The information related with companies, such as consignees, consignors, shippers, notifiers or others, and addresses, exception made for agents, is classified as sensitive and will be protected in accordance with article 15º Customs Code (CC), and sent to Customs Authorities.

Data to be routed from manifests through those mentioned systems will respect the original information.

This guideline was elaborated considering the following references:

- UN/EDIFACT D.97A IFCSUM
- UN/EDIFACT Data Element Codes D.00B
- ISO 6346 (2nd and 3rd editions) - Freight containers - Coding, identification and marking
- UN/ECE Recommendation 1 - United Nations Layout Key for Trade Documents (Doc. Ref. ECE/TRADE/137)
- UN/ECE Informative Annex to Recommendation 1 - United Nations Layout Key for Trade Documents (Doc. Ref. ECE/TRADE/270)
- UN/ECE Recommendation 7 - Numerical Representation of Dates, Time, and Periods of Time (Doc. Ref. TRADE/WP.4/INF.108)
- UN/ECE Recommendation 16 (3rd edition) - UN/LOCODE - Codes for Ports and Other Locations (Doc. Ref. ECE/TRADE/227) upgraded to 2003.2 version
- UN/ECE Recommendation 19 (2nd edition) - Codes for Modes of Transport (Doc. Ref.

TRADE/CEFACT/2001/19)

- UN/ECE Recommendation 20 - Codes for Units of Measure Used in International Trade (Doc. Ref. TRADE/CEFACT/2001/20)
- UN/ECE Recommendation 21 - Codes for Types of Cargo, Packages and Packaging Materials Revision 2 (Doc. Ref. ECE/TRADE/211)
- UN/ECE Recommendation 21 - Codes for Types of Cargo, Packages and Packaging Materials Revision 4 to Annex V and Annex VI (Doc. Ref. TRADE/CEFACT/2002/)
- ITIGG: General Recommendations Version 2.1 March 2001 (Doc. Ref. D4/ITIGG/104/v.2.00)
- ITIGG: IFCSUM Principles and Rules for Implementation of Consignment Based Messages (Doc. Ref. D4/ITIGG/100/v2.9)
- Guia do Utilizador - Manifesto - Subset da Mensagem IFCSUM versão 3.4 Outubro de 2003
- NSTI/NCTS Declaração de Trânsito Informatizada - Documento Auxiliar ao Guia de Implementação das Mensagens EDI Versão 3, Anexo - Códigos a Utilizar, Portuguese Customs,

The fact that Data Element Codes are from a newer Edifact Directory (D.00B) is because many useful codes for this implementation were introduced. This way it minimizes the need of temporary local codes.

Note for Date/Time formats. The usual format for this information is CCYYMMDDHHMM. But as several shipping agents use application systems belonging to the carriers they represent, usually in different geographical locations, it is also possible the usage of the format CCYYMMDDHHMMZZZ. This way Date/Time information can include the UTC time zone. Refer to ITIGG Recommendation D4/G23 and UN/ECE Recommendation 7.

Note for References. Associated with a document many references may apply. Several reasons can be behind this: number of parties involved, legal restrictions, operational requirements, etc. Also, sometimes these references are not applied to the document on the same moment. So a specific date may be closely related with a certain reference. In this implementation the procedure of using the RFF segment to state as much as possible references and theirs respective date (when RFF and DTM are structured as a group) was used. This way it was tried to avoid the dispersion of references by several different segments, keep each reference associated with its date (when it applies), allow several references to coexist with the same degree of importance, avoid concatenations of several references of different nature and avoid the need to impose the partners series of numbers. By allowing such a degree of freedom, where different entities can issue a same reference number, references related to the several objects (documents, vessel calls, previous messages, etc) will be identified by a composite key made by the reference itself, its associated date and the issuer. Remark these pieces of information are to be sent in the appropriate segments.

Note to Consignments. The usage of segment group 19 is not limited to send information related to Bill of Ladings. Its usage was enlarged in order to include other transport documents. The list considered may change by the inclusion or removal of the documents' type.

Note about "Contramarca" activation and Required objects. Certain objects/information are marked as required after a certain event. Normaly coincident with the mooring of the vessel. This event is one of the conditions needed in order to activate the Customs vessel process id ("Contramarca"). The other condition that must be satisfied is that the required objects/information must be sent. This does not mean that a message will be rejected if the required objects/information are missing. An adequate response will be given, but the message will be processed.

This guideline resulted from the balance of all opinions, remarks, restrictions and reference sources. Due to the complexity of the IFCSUM, its interpretations, and the specifics of each port involved, it is recognized that this guideline is the best common implementation. Port specifics will be noted through the guideline.

In the past, APL implemented an IFCSUM guideline that is presently being used in the Lisbon port community. For that reason certain objects (segment groups, segments, composites, elements and codes) will be kept in this guideline only to provide backward compatibility. These situations will be noted in the

## Common Platform - Manifest Message Format - Version 1.3j2

objects. It is strongly recommended not to adopt these objects in new implementations. They will not generate any error situation in order to allow current implementations to keep working. These objects will be marked as Optional.

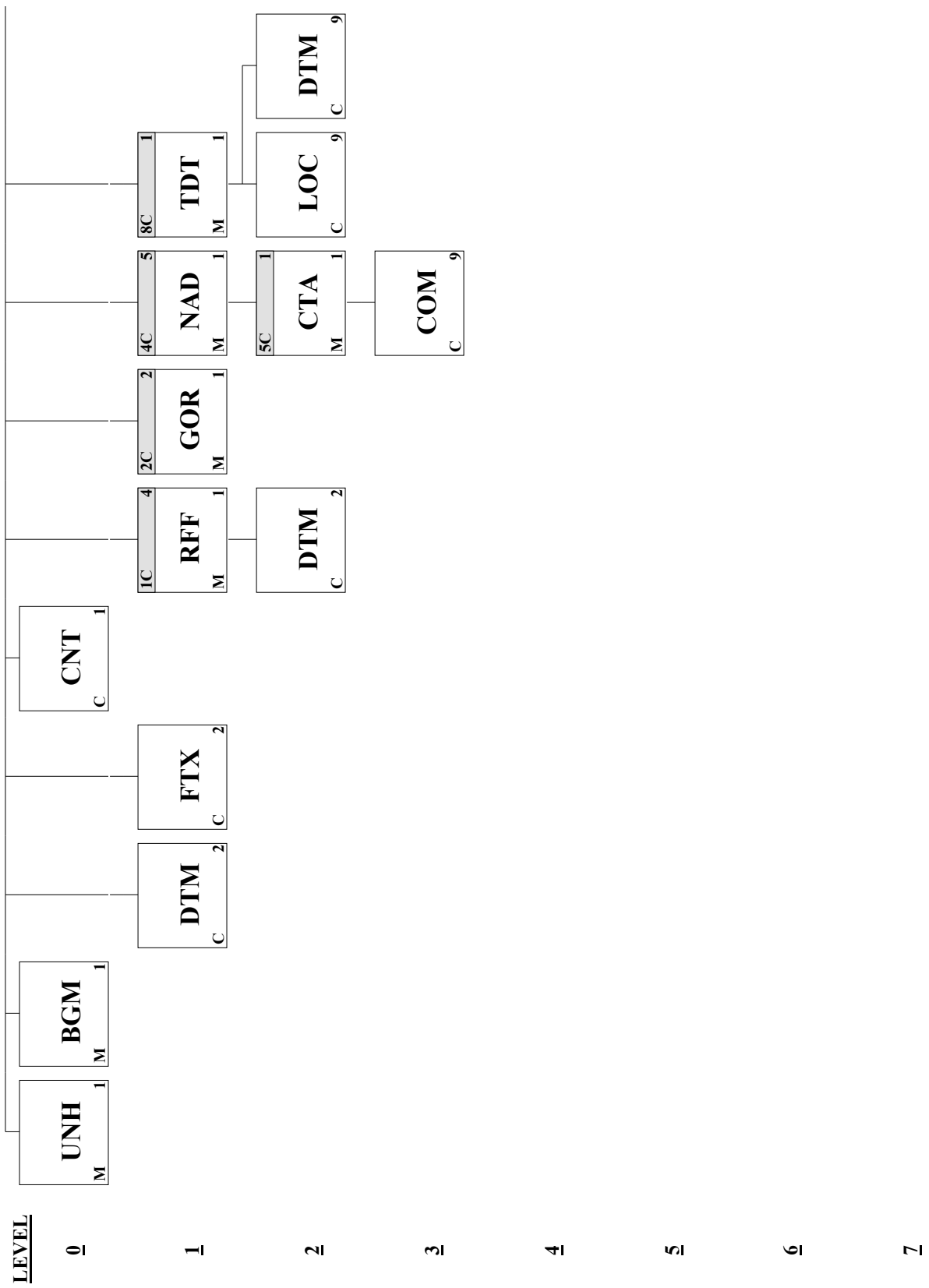
In the same line of thought, newer objects will be activated. These objects will also be marked as Optional. It is strongly recommended the usage of these objects by newer implementations and their adoption by current implementations as soon as possible. The exception is for objects that are activated due to Customs requirements. In these cases they have to be adopted. Some new objects also provide ways for the implementation of new processes that may add value to all partners in the port communities. This does not mean that these processes already exist, mainly because other actions outside this implementation have to be taken and other data sources have to be established. What this means is that an additional improvement to business activities in general are potentiated if the partners adopt the usage of these new objects.

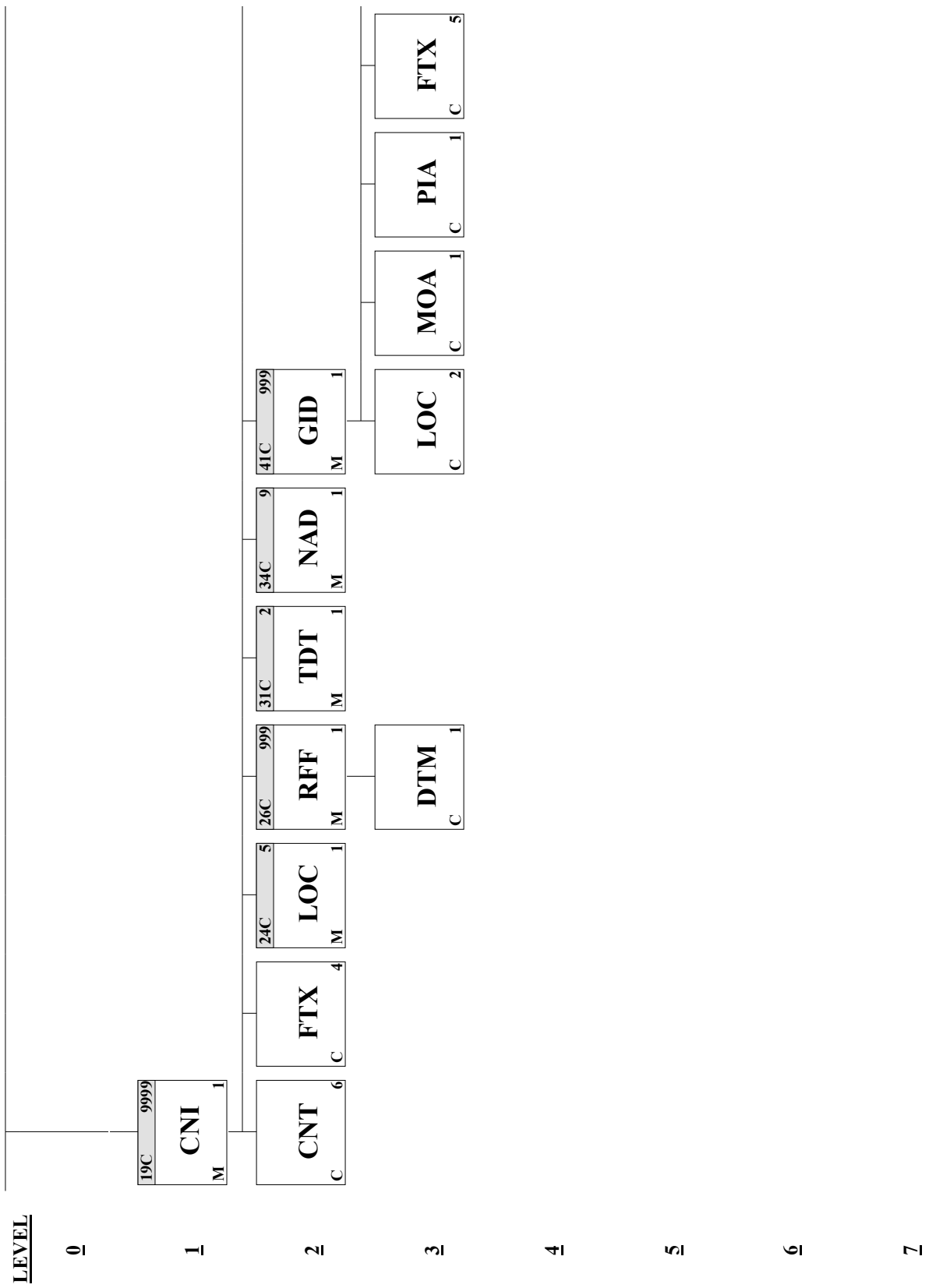
Usage Indicators in this document follow ITIGG Recommendation D4/G44.

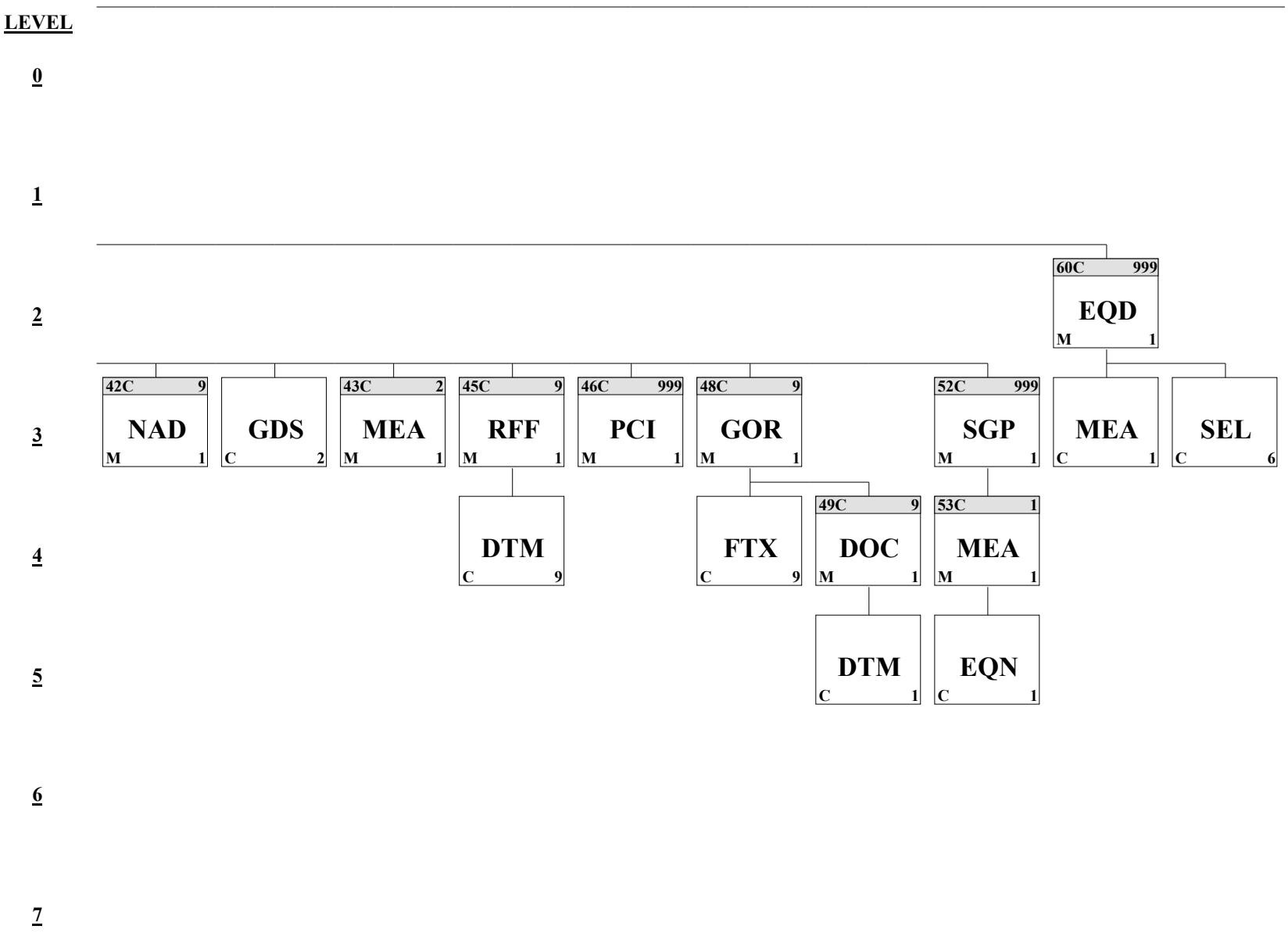
<u>Page No.</u>	<u>Pos. No.</u>	<u>Seg. ID</u>	<u>Name</u>	<u>Base Guide</u>	<u>User Status</u>	<u>Max.Use</u>	<u>Group Repeat</u>	<u>Notes and Comments</u>
9	0010	UNH	Message Header	M	M	1		
11	0020	BGM	Beginning of Message	M	M	1		
15	0030	DTM	Date/Time/Period	C	R	2		
17	0050	FTX	Free Text	C	O	2		
19	0060	CNT	Control Total	C	R	1		
	0070		Segment Group 1: RFF-DTM	C	R		4	
21	0080	RFF	Reference	M	M	1		
23	0090	DTM	Date/Time/Period	C	D	2		
	0100		Segment Group 2: GOR	C	R		2	
25	0110	GOR	Governmental Requirements	M	M	1		
	0190		Segment Group 4: NAD-SG5	C	R		5	
29	0200	NAD	Name and Address	M	M	1		
	0210		Segment Group 5: CTA-COM	C	D		1	
34	0220	CTA	Contact Information	M	M	1		
35	0230	COM	Communication Contact	C	R	9		
	0350		Segment Group 8: TDT-LOC-DTM	C	O		1	
37	0360	TDT	Details of Transport	M	M	1		
40	0380	LOC	Place/Location Identification	C	O	9		
42	0390	DTM	Date/Time/Period	C	O	9		
	0860		Segment Group 19: CNI-CNT-FTX -SG24-SG26-SG31-SG34-SG41-SG60	C	O		9999	
46	0870	CNI	Consignment Information	M	M	1		
48	1010	CNT	Control Total	C	R	6		
50	1050	FTX	Free Text	C	O	4		
	1060		Segment Group 24: LOC	C	R		5	
53	1070	LOC	Place/Location Identification	M	M	1		
	1120		Segment Group 26: RFF-DTM	C	R		999	
57	1130	RFF	Reference	M	M	1		
61	1140	DTM	Date/Time/Period	C	R	1		
	1400		Segment Group 31: TDT	C	O		2	

Common Platform - Manifest Message Format - Version 1.3j2

63	1410	TDT	Details of Transport	M	M	1
	1500		Segment Group 34: NAD	C	R	9
67	1510	NAD	Name and Address	M	M	1
	1820		Segment Group 41: GID-LOC-MOA -PIA-FTX-SG42-GDS-SG43-SG45-SG46 -SG48-SG52	C	D	999
72	1830	GID	Goods Item Details	M	M	1
75	1880	LOC	Place/Location Identification	C	D	2
77	1890	MOA	Monetary Amount	C	O	1
78	1900	PIA	Additional Product Id	C	O	1
81	1920	FTX	Free Text	C	R	5
	1930		Segment Group 42: NAD	C	R	9
85	1940	NAD	Name and Address	M	M	1
89	1960	GDS	Nature of Cargo	C	R	2
	1970		Segment Group 43: MEA	C	D	2
91	1980	MEA	Measurements	M	M	1
	2030		Segment Group 45: RFF-DTM	C	O	9
94	2040	RFF	Reference	M	M	1
99	2050	DTM	Date/Time/Period	C	R	9
	2060		Segment Group 46: PCI	C	D	999
101	2070	PCI	Package Identification	M	M	1
	2140		Segment Group 48: GOR-FTX-SG49	C	O	9
104	2150	GOR	Governmental Requirements	M	M	1
107	2190	FTX	Free Text	C	D	9
	2200		Segment Group 49: DOC-DTM	C	O	9
110	2210	DOC	Document/Message Details	M	M	1
118	2220	DTM	Date/Time/Period	C	O	1
	2280		Segment Group 52: SGP-SG53	C	D	999
120	2290	SGP	Split Goods Placement	M	M	1
	2310		Segment Group 53: MEA-EQN	C	D	1
122	2320	MEA	Measurements	M	M	1
124	2330	EQN	Number of Units	C	O	1
	2570		Segment Group 60: EQD-MEA-SEL	C	D	999
126	2580	EQD	Equipment Details	M	M	1
129	2610	MEA	Measurements	C	R	1
131	2630	SEL	Seal Number	C	O	6
132	2810	UNT	Message Trailer	M	M	1











**Segment:** **UNH** Message Header  
**Position:** 0010  
**Group:**  
**Level:** 0  
**Usage:** Mandatory  
**Max Use:** 1  
**Purpose:** A service segment starting and uniquely identifying a message. The message type code for the Forwarding and consolidation summary message is IFCSUM.  
 Note: Forwarding and consolidation summary messages conforming to this document must contain the following data in segment UNH, composite S009:  
 Data element 0065 IFCSUM 0052 D 0054 97A 0051  
 UN

**Dependency Notes:**

**Semantic Notes:**

**Comments:**

**Notes:**

Example: Message envelope number "1357924680", type "IFCSUM", UN/Edifact directory "D97A"

UNH+1357924680+IFCSUM:D:97A:UN'

**Data Element Summary**

<u>Data Element</u>	<u>Component Element</u>	<u>Name</u>	<u>Base Attributes</u>	<u>User Attributes</u>
0062		<b>MESSAGE REFERENCE NUMBER</b>	<b>M an..14</b>	<b>M</b>
		Unique message reference assigned by the sender.		
		Number assigned by the transmitter. It will not be used for business purposes.		
		It is suggested to follow the format "CCCCCCAAAASSSS" where		
		- CCCCCC user code		
		- AAAA year (4-digit)		
		- SSSSS sequential number		
		<i>For backward compatibility, this element will be processed for messages that are received from users of the existent Port of Lisbon implementation.</i>		
		<i>The contents of this element will be subject to the rules and interpretation applicable to the BGM:1004.</i>		
S009		<b>MESSAGE IDENTIFIER</b>	<b>M</b>	<b>M</b>
		Identification of the type, version etc. of the message being interchanged.		
	0065	<b>Message type identifier</b>	<b>M an..6</b>	<b>M</b>
		Code identifying a type of message and assigned by its controlling agency.		
		IFCSUM Forwarding and consolidation summary message		
		A code to identify the forwarding and consolidation summary message.		
	0052	<b>Message type version number</b>	<b>M an..3</b>	<b>M</b>
		Version number of a message type.		
		D Draft version/UN/EDIFACT Directory		

Message approved and issued as a draft message (Valid for directories published after March 1993 and prior to March 1997). Message approved as a standard message (Valid for directories published after March 1997).

<b>0054</b>	<b>Message type release number</b>	<b>M an..3 M</b>
	Release number within the current message type version number (0052).	
	97A Release 1997 - A	
	Message approved and issued in the first 1997 release of the UNTDID (United Nations Trade Data Interchange Directory).	
<b>0051</b>	<b>Controlling agency</b>	<b>M an..2 M</b>
	Code identifying the agency controlling the specification, maintenance and publication of the message type.	
	UN UN/ECE/TRADE/WP.4	
	United Nations Economic UN Economic Commission for Europe (UN/ECE), Committee on the development of trade (TRADE), Working Party on facilitation of international trade procedures (WP.4).	
<b>0057</b>	<b>Association assigned code</b>	<b>C an..6 O</b>
	Code, assigned by the association responsible for the design and maintenance of the message type concerned, which further identifies the message.	
<b>0068</b>	<b>COMMON ACCESS REFERENCE</b>	<b>C an..35 X</b>
	Reference serving as a key to relate all subsequent transfers of data to the same business case or file.	
<b>S010</b>	<b>STATUS OF THE TRANSFER</b>	<b>C X</b>
	Statement that the message is one in a sequence of transfers relating to the same topic.	
<b>0070</b>	<b>Sequence message transfer number</b>	<b>M n..2 X</b>
	Number assigned by the sender indicating that the message is an addition or change of a previously sent message relating to the same topic.	
<b>0073</b>	<b>First/last sequence message transfer indication</b>	<b>C a1 X</b>
	Indication used for the first and last message in a sequence of the same type of message relating to the same topic.	

**Segment:** **BGM** **Beginning of Message**  
**Position:** 0020  
**Group:**  
**Level:** 0  
**Usage:** Mandatory  
**Max Use:** 1  
**Purpose:** A segment to indicate the beginning of the message and to transmit identifying number (e.g. Master B/L, Master AWB etc.), type, date and the function of the message.

**Dependency Notes:**

**Semantic Notes:**

**Comments:**

**Notes:** Example: Manifest "785"; message number: "23451999"; original: "9"

BGM+785+23451999+9'

**Data Element Summary**

<u>Data Element</u>	<u>Component Element</u>	<u>Name</u>	<u>Base Attributes</u>	<u>User Attributes</u>
C002		<b>DOCUMENT/MESSAGE NAME</b>	C	R
		Identification of a type of document/message by code or name. Code preferred.		
	1001	<b>Document/message name, coded</b>	C an..3	R
		Document/message identifier expressed in code.		
		785 Cargo manifest		
		Listing of goods comprising the cargo carried in a means of transport or in a transport-unit. The cargo manifest gives the commercial particulars of the goods, such as transport document numbers, consignors, consignees, shipping marks, number and kind of packages and descriptions and quantities of the goods.		
		833 Cargo declaration (departure)		
		Generic term, sometimes referred to as Freight declaration, applied to the documents providing the particulars required by the Customs concerning the cargo (freight) carried by commercial means of transport (CCC).		
		<i>Only provided for backward compatibility. It will be treated like code '785'.</i>		
		<i>Please, see notes of segment GOR in group 2.</i>		
	1131	<b>Code list qualifier</b>	C an..3	X
		Identification of a code list.		
	3055	<b>Code list responsible agency, coded</b>	C an..3	X
		Code identifying the agency responsible for a code list.		
	1000	<b>Document/message name</b>	C an..35	X
		Plain language identifier specifying the function of a document/message.		
C106		<b>DOCUMENT/MESSAGE IDENTIFICATION</b>	C	R
		Identification of a document/message by its number and eventually its version or		

	revision.			
<b>1004</b>	<b>Document/message number</b>	<b>C</b>	<b>an..35</b>	<b>R</b>
	Reference number assigned to the document/message by the issuer.			
	Send the identification of the message.			
	<i>For backward compatibility, this element can be used by the users of the Port of Lisbon current implementation to send the document (manifest) number.</i>			
	<i>The differences between the Port of Lisbon project and this implementation are:</i>			
	<i>- the document number must be sent in SG1:RFF:1154, having SG1:RFF:1153 with code AFB;</i>			
	<i>- this element substitutes UNH:0062 in terms of usage and interpretation.</i>			
<b>1056</b>	<b>Version</b>	<b>C</b>	<b>an..9</b>	<b>X</b>
	To specify the version number or name of an object.			
<b>1060</b>	<b>Revision number</b>	<b>C</b>	<b>an..6</b>	<b>X</b>
	To specify a revision number.			
<b>1225</b>	<b>MESSAGE FUNCTION, CODED</b>	<b>C</b>	<b>an..3</b>	<b>R</b>
	Code indicating the function of the message.			
	1	Cancellation		
		Message cancelling a previous transmission for a given transaction.		
		Cancel an already sent manifest. If the customs have already activated the customs process, the shipping agent has to ask customs permission to do it.		
		A manifest cannot be cancelled in the following situations:		
		a) at least one of its transport documents is in the state of "closed" (fechado) for the Port Authority, since it originates invoices and statistical data;		
		b) at least one transport equipment or one goods item referred in one of its transport documents was subject to a physical movement.		
		This applies to whole document, so information in group 19 will not be processed.		
	2	Addition		
		Message containing items (e.g. line items, goods items, Customs items, equipment items) to be added to a previously sent message.		
		Add consignment document to an already sent manifest. If the manifest is a final manifest then this addition is considered customs additional cargo.		
		If the manifest was already subject to an invoice process by the Port Authority, this function will generate "work to do" since the following documents might be missing:		
		a) discharge/loading report;		
		b) invoice for the added transport document.		
		In group 19 send only the information related to the consignment to be added.		

- 3                    Deletion
- Message containing items (e.g. line items, goods items, Customs items, equipment items) to be deleted from a previously sent message.
- Remove consignment document. If the customs have already activated the customs process or this specific consignment document is already treated by customs, the shipping agent has to ask customs permission to do it.
- The removal operation cannot be executed in the following situations:
- a) at least one of the transport documents to be removed is in the state of "closed" (fechado) for the Port Authority since it originates invoices and statistical data;
  - b) at least one transport equipment or one goods, item referred in one of the transport documents to be removed was subject to a physical movement.
- In group 19 send only the information related to the consignment to be deleted.
- 4                    Change
- Message containing items (e.g. line items, goods items, Customs items, equipment items) to be changed in a previously sent message.
- Change a consignment document. If customs had already activated the customs process, or this specific consignment document is already treated by customs, the shipping agent has to ask customs permission to do it.
- The change operation cannot be executed in the following situations:
- a) at least one of the transport documents to be changed is in the state of "closed" (fechado) for the Port Authority since it originates invoices and statistical data;
  - b) at least one transport equipment or one goods, item referred in one of the transport documents to be changed was subject to a physical movement.
- In group 19 send only the information related to the consignment to be changed.
- 5                    Replace
- Message replacing a previous message.
- This function replaces the manifest as if it were two messages: delete and create a new one. If the customs have already activated the customs process, the shipping agent has to ask customs permission to do it.
- The substitution operation cannot be executed in the following situations:
- a) at least one of the transport documents is in the state of "closed" (fechado) for the Port Authority since it originates invoices and statistical data;

		b) at least one transport equipment or one goods, item referred in one of the transport documents was subject to a physical movement.
9	Original	Initial transmission related to a given transaction. Only can be used if it's the first message for this specific document (manifest).
22	Final transmission	Final message in a related series of messages together making up a commercial, administrative or transport transaction. This code declares the document as closed. This is, no more transport documents will be included in the manifest. Only after the good integration of this message in the Customs system, certain Customs procedures will be activated.  It is the date of this message that will be considered as the date of delivery of the document.  After a message with this function is sent, the usage of all other functions will be processed like "rectification" according to Customs' definition. Consequently they will be subject to approval or refusal from Customs.  This applies to whole document, so information in group 19 will not be processed.
33	Change in heading section	Message changing the referenced message heading section. This function allows the correction/change of information at document header level. Information in group 19 will not be processed.
46	Provisional	Message content is provisional. <i>Only provided for backward compatibility. It will be treated like code '9'.</i>
47	Definitive	Message content is definitive. <i>Only provided for backward compatibility. It will be treated like code '9'.</i>

4343

**RESPONSE TYPE, CODED** **C an..3 X**  
Code specifying the type of acknowledgment required or transmitted.

**Segment:** **DTM** Date/Time/Period  
**Position:** 0030  
**Group:**  
**Level:** 1  
**Usage:** Conditional (Required)  
**Max Use:** 2  
**Purpose:** A segment to specify date/time of the document/message.  
**Dependency Notes:**  
**Semantic Notes:**  
**Comments:**

**Notes:** This segment is used twice.

The first usage is to give the date/time at which the sender creates the message, ready to be sent in the communication channel. In this case DE:2005 will be '137'.

The second usage is to give at what time the message was placed in the mailbox by the sender when the receiver is a port authority. This is, the time at which it was effectively available to the receiver from the sender by being placed in the communications channel. This second usage applies only to the relation between the port authorities and Customs. In this case DE:2005 will be '243'.

Example: Date/time the message was issued: "2003/10/09 - 14:30"  
 DTM+137:200310091430:203`

Example: Date/time the message was issued: "2003/10/08 - 15:25 UTC+3". Attention that in this case the defined escape character must be used in the date/time format, if the time zone is positive in relation to GMT. If the escape character is '?' then  
 DTM+137:200310081525?+03:303`

**Data Element Summary**

<u>Data Element</u>	<u>Component Element</u>	<u>Name</u>	<u>Base Attributes</u>	<u>User Attributes</u>
C507		DATE/TIME/PERIOD	M	M
		Date and/or time, or period relevant to the specified date/time/period type.		
	2005	Date/time/period qualifier	M an..3	M
		Code giving specific meaning to a date, time or period.		
		137 Document/message date/time (2006) Date/time when a document/message is issued. This may include authentication.		
		243 Transmission date/time of document		
	2380	Date/time/period	C an..35	R
		The value of a date, a date and time, a time or of a period in a specified representation. According with UN/ECE Recommendation N°7.		
	2379	Date/time/period format qualifier	C an..3	R

Common Platform - Manifest Message Format - Version 1.3j2

Specification of the representation of a date, a date and time or of a period.

203	CCYYMMDDHHMM Calendar date including time with minutes: C=Century; Y=Year; M=Month; D=Day; H=Hour; M=Minutes.
303	CCYYMMDDHHMMZZZ See 203 plus Z=Time zone.



**Segment:** **FTX** Free Text  
**Position:** 0050  
**Group:**  
**Level:** 1  
**Usage:** Conditional (Optional)  
**Max Use:** 2  
**Purpose:** A segment to give information and/or processable instructions in addition to that in other segments.

**Dependency Notes:**

**Semantic Notes:**

**Comments:**

**Notes:** The use of this segment allows to have a 350-character space for purpose of free information concerning Observation related to the Manifest as a whole.

Example: "Goods with no special conditionings"

FTX+AAI+++GOODS WITH NO SPECIAL CONDITIONINGS'

*In the APL implementation guideline, this segment was also used by the vessel agent to identify the other agents making part of the pool and that were carrying cargo in the vessel. This function will be performed in the "Processo de Meio de Transport" application system. So, information related with this function will be ignored.*

**Data Element Summary**

<b>Data Element</b>	<b>Component Element</b>	<b>Name</b>	<b>Base Attributes</b>	<b>User Attributes</b>
4451		<b>TEXT SUBJECT QUALIFIER</b> Code specifying subject of a free text. AAI General information ZCN	<b>M an..3</b>	<b>M</b>
			<i>Only provided for backward compatibility. Information in the segment will be ignored.</i>	
4453		<b>TEXT FUNCTION, CODED</b> Code specifying how to handle the text.	<b>C an..3</b>	<b>X</b>
C107		<b>TEXT REFERENCE</b> Coded reference to a standard text and its source.	<b>C</b>	<b>X</b>
	4441	<b>Free text identification</b> Free text in coded form.	<b>M an..17</b>	<b>X</b>
	1131	<b>Code list qualifier</b> Identification of a code list.	<b>C an..3</b>	<b>X</b>
	3055	<b>Code list responsible agency, coded</b> Code identifying the agency responsible for a code list.	<b>C an..3</b>	<b>X</b>
C108		<b>TEXT LITERAL</b> Free text; one to five lines.	<b>C</b>	<b>O</b>
	4440	<b>Free text</b> Free text field available to the message sender for information.	<b>M an..70</b>	<b>M</b>

Common Platform - Manifest Message Format - Version 1.3j2

4440	<b>Free text</b>	<b>C an..70</b>	<b>O</b>
	Free text field available to the message sender for information.		
4440	<b>Free text</b>	<b>C an..70</b>	<b>O</b>
	Free text field available to the message sender for information.		
4440	<b>Free text</b>	<b>C an..70</b>	<b>O</b>
	Free text field available to the message sender for information.		
4440	<b>Free text</b>	<b>C an..70</b>	<b>O</b>
	Free text field available to the message sender for information.		
3453	<b>LANGUAGE, CODED</b>	<b>C an..3</b>	<b>X</b>
	Code of language (ISO 639-1988).		

**Segment:** **CNT** **Control Total**  
**Position:** 0060  
**Group:**  
**Level:** 0  
**Usage:** Conditional (Required)  
**Max Use:** 1  
**Purpose:** A segment to specify totals of the consolidation (e.g. total number of equipment, total number of consignments, total gross weight and/or dimensions of the whole consolidation etc.).

**Dependency Notes:**

**Semantic Notes:**

**Comments:**

**Notes:** To inform the number of consignments in the manifest.

Example: 123 consignments

CNT+10:123'

*For backward compatibility, more than one occurrence is accepted, but information will be ignored.*

**Data Element Summary**

<u>Data Element</u>	<u>Component Element</u>	<u>Name</u>	<u>Base Attributes</u>	<u>User Attributes</u>
C270		<b>CONTROL</b>	<b>M</b>	<b>M</b>
		Control total for checking integrity of a message or part of a message.		
	<b>6069</b>	<b>Control qualifier</b>	<b>M an..3</b>	<b>M</b>
		Determines the source data elements in the message which forms the basis for 6066 Control value.		
		10 Total number of consignments		
		The total number of consignments.		
	<b>6066</b>	<b>Control value</b>	<b>M n..18</b>	<b>M</b>
		Value obtained from summing the values specified by the Control Qualifier throughout the message (Hash total).		
	<b>6411</b>	<b>Measure unit qualifier</b>	<b>C an..3</b>	<b>X</b>
		Indication of the unit of measurement in which weight (mass), capacity, length, area, volume or other quantity is expressed.		

<b>Group:</b>	<b>RFF</b> Segment Group 1: Reference
<b>Position:</b>	0070
<b>Group:</b>	
<b>Level:</b>	1
<b>Usage:</b>	Conditional (Required)
<b>Max Use:</b>	4
<b>Purpose:</b>	A group of segments containing references and constants which apply to the entire message.
<b>Notes:</b>	<p>This group is used to send the four possible references allowed at header level: the Port Authority vessel call Id, the Customs vessel call Id (known as "Contramarca"), the manifest Id given by the carrier/agent and a reference to a previous message.</p> <p>The group must be sent the number of times needed to send all the references the carrier/agent is aware at the moment it sends the document. At least the manifest Id (RFF:C506:1153='AFB') and Port Authority vessel call Id (RFF:C506:1153='ATZ') must be sent by the shipping agent or its representative. This means that the group must occur twice, at least.</p> <p>The Customs vessel call Id may be sent when known or was activated. In this case there is no need to send information in DTM segment. In case the shipping agent hasn't provided the Customs vessel call Id, the Port Authority must include it in the message in case this Id has been provided for the vessel call in question.</p> <p>The reference to a previous message (RFF:1153 is ACW) is only sent when the message function, stated in BGM:1225 is not '9' (or '46' or '47' for compatibility reasons). The goal behind this usage is to provide a way to keep the correct chronological sequence of different messages related with the same document synchronized with the sender. This usage was based on ITIGG Recommendation D4/G4.</p> <p>When qualifiers 'ACW' or 'AFB' are used, then the segment DTM in this group must be sent.</p> <p>For qualifier 'ACW' in segment RFF, the date in segment DTM in this group must be the one that was present in segment DTM at top level of the previous message.</p> <p>For qualifier 'AFB' in segment RFF, the date in segment DTM in this group corresponds to the date of the document. In other words, the manifest date. It is admissible this date to be the same as the date in segment DTM at the top level, but it cannot be more recent.</p> <p>The reference number by which the issuer knows the document (manifest) and the respective date, must be unchangeable and unique for each issuer, independently of the number of messages associated with the document (manifest).</p>

#### Segment Summary

	<b>Pos.</b>	<b>Seg.</b>		<b>Req.</b>	<b>Max.</b>	<b>Group:</b>
	<b><u>No.</u></b>	<b><u>ID</u></b>	<b><u>Name</u></b>	<b><u>Des.</u></b>	<b><u>Use</u></b>	<b><u>Repeat</u></b>
M	0080	RFF	Reference	M	1	
D	0090	DTM	Date/Time/Period	C	2	

**Segment:** **RFF** Reference  
**Position:** 0080 (Trigger Segment)  
**Group:** SG1  
**Level:** 1  
**Usage:** Mandatory  
**Max Use:** 1  
**Purpose:** A segment to express a reference which applies to the entire message.  
**Dependency Notes:**  
**Semantic Notes:**  
**Comments:**

**Notes:** When the reference is Customs vessel process id (RFF:C506:1153='AFM'), then the reference value in DE:1154 must have the format defined by Customs. The current format is

- UN/Locode: 5 characters
- customs office code: 3 digits
- mode of transport code (UN/CEFACT Trade Facilitation Recommendation 19 - Codes for Modes of Transport): 1 digit
- year: 4 digits
- sequential number: 6 digits left padded with zeros

Please note that this format is subject to changes in the future.

When the reference is the Port Authority vessel call Id (RFF:C506:1153='ATZ'), then in each the following Ports, the suffixes apply to the reference:

- Port of Leixões: ESC
- Port of Lisbon: LIS
- Port of Sines: SIN

Example: Manifest Id given by the carrier/agent: NBLISD001

RFF+AFB:NBLISD001'

Example: Lisbon's vessel call: LIS200300159

RFF+ATZ:LIS200300159'

Example: Customs vessel process id (Contramarca) PTLIS07512004000107

RFF+AFM:PTLIS07512004000107'

#### Data Element Summary

<u>Data Element</u>	<u>Component Element</u>	<u>Name</u>	<u>Base Attributes</u>	<u>User Attributes</u>
C506		REFERENCE	M	M
		Identification of a reference.		
	1153	Reference qualifier	M an..3	M
		Code giving specific meaning to a reference segment or a reference number.		

Common Platform - Manifest Message Format - Version 1.3j2

	ABO	Originator's reference <i>Only provided for backward compatibility. It will be treated like code 'AFB'.</i>
	ACW	Reference number to previous message Reference number assigned to the message which was previously issued (e.g. in the case of a cancellation, the primary reference of the message to be cancelled will be quoted in this element). This id is what appeared in BGM:C106:1004 of a previous message.
	AFB	Cargo manifest number Reference number assigned to a cargo manifest, see: 1001 = 785. The reference by which the carrier/agent knows this manifest.
	AFM	Secondary Customs reference The reference is the Customs vessel call Id (known as "Contramarca").
	ATZ	Ship's stay reference number Reference number assigned by a port authority to the stay of a vessel in the port. The reference is the Port Authority vessel call Id. This number is provided by the Port Authority Information System.
	VON	Voyage number [8228] Reference number assigned by the carrier or his agent to the voyage of the vessel. <i>Only provided for backward compatibility. It will be treated like code 'ATZ'.</i>
<b>1154</b>	<b>Reference number</b>	<b>C an..35 R</b> Identification number the nature and function of which can be qualified by an entry in data element 1153 Reference qualifier. If 1153 is 'ATZ', the reference will be checked against the information about the agent associated with the vessel call provided to the Port Authority (according with the procedures of "Processo Meio Transporte").
<b>1156</b>	<b>Line number</b>	<b>C an..6 X</b> Number of the line in the document/message referenced in 1154 Reference number.
<b>4000</b>	<b>Reference version number</b>	<b>C an..35 X</b> To uniquely identify a reference by its revision number.

**Segment:** **DTM** Date/Time/Period  
**Position:** 0090  
**Group:** SG1  
**Level:** 2  
**Usage:** Conditional (Dependent)  
**Max Use:** 2  
**Purpose:** A segment to indicate date and time relating to the reference.

**Dependency Notes:**

**Semantic Notes:**

**Comments:**

**Notes:** The complete meaning of this date depends of the type of reference in the previous RFF segment, stated in RFF:C506:1153 data element. Recall that this segment must be sent when then RFF:1153 is in {ACW, AFB}.

Example: Date/time of the reference: "2003/10/08 - 10:15"

DTM+171:200310081015:203'

Example: Date/time of the reference: "2003/10/08 - 15:25 UTC+3". Attention that in this case the defined escape character must be used in the date/time format, if the time zone is positive in relation to GMT. If the escape character is '?' then

DTM+171:200310081525?+03:303'

**Data Element Summary**

<u>Data Element</u>	<u>Component Element</u>	<u>Name</u>	<u>Base Attributes</u>	<u>User Attributes</u>
C507		<b>DATE/TIME/PERIOD</b> Date and/or time, or period relevant to the specified date/time/period type.	<b>M</b>	<b>M</b>
	<b>2005</b>	<b>Date/time/period qualifier</b> Code giving specific meaning to a date, time or period. 171 Reference date/time Date/time on which the reference was issued.	<b>M an..3</b>	<b>M</b>
	<b>2380</b>	<b>Date/time/period</b> The value of a date, a date and time, a time or of a period in a specified representation. According with UN/ECE Recommendation N°7.	<b>C an..35</b>	<b>R</b>
	<b>2379</b>	<b>Date/time/period format qualifier</b> Specification of the representation of a date, a date and time or of a period. 203 CCYYMMDDHHMM Calendar date including time with minutes: C=Century; Y=Year; M=Month; D=Day; H=Hour; M=Minutes. 303 CCYYMMDDHHMMZZZ See 203 plus Z=Time zone.	<b>C an..3</b>	<b>R</b>

**Group:** **GOR** Segment Group 2: Governmental Requirements  
**Position:** 0100  
**Group:**  
**Level:** 1  
**Usage:** Conditional (Required)  
**Max Use:** 2  
**Purpose:** A group of segments to give information about the current customs procedure under which the transport is moving or to indicate applicable governmental procedures related to import, export and transit of the voyage/flight or consolidation.  
**Notes:** This group is to state the type of manifest. Its usage replaces the need to use different codes in BGM:1001 (see backward compatibility comments in the GOR segment).  
 The second usage is applied only to backward compatibility.

**Segment Summary**

	<b>Pos.</b>	<b>Seg.</b>		<b>Req.</b>	<b>Max.</b>	<b>Group:</b>
	<b><u>No.</u></b>	<b><u>ID</u></b>	<b><u>Name</u></b>	<b><u>Des.</u></b>	<b><u>Use</u></b>	<b><u>Repeat</u></b>
M	0110	GOR	Governmental Requirements	M	1	



**Segment:** **GOR** Governmental Requirements  
**Position:** 0110 (Trigger Segment)  
**Group:** SG2  
**Level:** 1  
**Usage:** Mandatory  
**Max Use:** 1  
**Purpose:** A segment to give information about the current customs procedure under which the transport is moving or to indicate applicable governmental procedures to import, export and transit of the voyage/flight or consolidation.

**Dependency Notes:**

**Semantic Notes:**

**Comments:**

**Notes:**

Relating to the first function, the following notes shall be considered.

If the document is a Discharge Manifest, then BGM:1001='785' and GOR:8323='2' (see notes for backward compatibility).

If the document is a Loading Manifest, then BGM:1001='785' and GOR:8323='1' (see notes of backward compatibility).

If the document is related to cargo In Transit, then BGM:1004='785' and GOR:8323='3' (see notes of backward compatibility).

Note, the transit manifest can be delivered to Customs on paper while EU legislation does not oblige to an electronic transmission.

Example: Export manifest

GOR+1+5'

*In the APL implementation guideline, the distinction between Loading and Discharge documents where given by the usage of code '833' in BGM:1001.*

*For backward compatibility the process will be supported with the partners that currently use the APL system. The following equivalencies apply:*

- APL implementation BGM:1001='833' and GOR:8323='1' is equivalent to BGM:1001='785' and GOR:8323='1' in the new implementation.
- APL implementation BGM:1001='785' and GOR:8323='2' is equivalent to BGM:1001='785' and GOR:8323='2' in the new implementation.

**Data Element Summary**

<u>Data Element</u>	<u>Component Element</u>	<u>Name</u>	<u>Base Attributes</u>	<u>User Attributes</u>
8323		TRANSPORT MOVEMENT, CODED	C an..3	R
		Code indicating the movement of goods (e.g. import, export, transit).		
	1	Export		
		Note that this term is understood in the wider context of outbound of goods and not under the strict customs definition.		
	2	Import		

					Note that this term is understood in the wider context of inbound of goods and not under the strict customs definition.
	3	Transit			
					Note that this term is understood in the wider context of goods that remain on board the vessel.
	ZS0	Simplified Transit Procedure not admitted			<i>Only provided for backward compatibility. Information in the segment will be ignored.</i>
	ZS1	Simplified Transit Procedure Level 1 article 447, EC regulation no. 2454/93 of the Commission			<i>Only provided for backward compatibility. Information in the segment will be ignored.</i>
	ZS2	Simplified Transit Procedure Level 2 article 448, EC regulation no. 2454/93 of the Commission			<i>Only provided for backward compatibility. Information in the segment will be ignored.</i>
<b>C232</b>		<b>GOVERNMENT ACTION</b>	<b>C</b>		<b>R</b>
		Code indicating a type of government action.			
	<b>9415</b>	<b>Government agency, coded</b>	<b>C</b>	<b>an..3</b>	<b>R</b>
		To indicate government agencies that are involved.			
	5	Customs			
		Customs authorities.			
	<b>9411</b>	<b>Government involvement, coded</b>	<b>C</b>	<b>an..3</b>	<b>X</b>
		Indication of requirement and status of government involvement.			
	<b>9417</b>	<b>Government action, coded</b>	<b>C</b>	<b>an..3</b>	<b>X</b>
		To indicate type of government action such as inspection, detention, fumigation, security.			
	<b>9353</b>	<b>Government procedure, coded</b>	<b>C</b>	<b>an..3</b>	<b>X</b>
		Code identifying the treatment applied by the government to goods which are subject to a control.			
<b>C232</b>		<b>GOVERNMENT ACTION</b>	<b>C</b>		<b>X</b>
		Code indicating a type of government action.			
	<b>9415</b>	<b>Government agency, coded</b>	<b>C</b>	<b>an..3</b>	<b>X</b>
		To indicate government agencies that are involved.			
	<b>9411</b>	<b>Government involvement, coded</b>	<b>C</b>	<b>an..3</b>	<b>X</b>
		Indication of requirement and status of government involvement.			
	<b>9417</b>	<b>Government action, coded</b>	<b>C</b>	<b>an..3</b>	<b>X</b>
		To indicate type of government action such as inspection, detention, fumigation, security.			
	<b>9353</b>	<b>Government procedure, coded</b>	<b>C</b>	<b>an..3</b>	<b>X</b>
		Code identifying the treatment applied by the government to goods which are subject to a control.			
<b>C232</b>		<b>GOVERNMENT ACTION</b>	<b>C</b>		<b>X</b>
		Code indicating a type of government action.			

Common Platform - Manifest Message Format - Version 1.3j2

	<b>9415</b>	<b>Government agency, coded</b>	<b>C an..3</b>	<b>X</b>
		To indicate government agencies that are involved.		
	<b>9411</b>	<b>Government involvement, coded</b>	<b>C an..3</b>	<b>X</b>
		Indication of requirement and status of government involvement.		
	<b>9417</b>	<b>Government action, coded</b>	<b>C an..3</b>	<b>X</b>
		To indicate type of government action such as inspection, detention, fumigation, security.		
	<b>9353</b>	<b>Government procedure, coded</b>	<b>C an..3</b>	<b>X</b>
		Code identifying the treatment applied by the government to goods which are subject to a control.		
<b>C232</b>		<b>GOVERNMENT ACTION</b>	<b>C</b>	<b>X</b>
		Code indicating a type of government action.		
	<b>9415</b>	<b>Government agency, coded</b>	<b>C an..3</b>	<b>X</b>
		To indicate government agencies that are involved.		
	<b>9411</b>	<b>Government involvement, coded</b>	<b>C an..3</b>	<b>X</b>
		Indication of requirement and status of government involvement.		
	<b>9417</b>	<b>Government action, coded</b>	<b>C an..3</b>	<b>X</b>
		To indicate type of government action such as inspection, detention, fumigation, security.		
	<b>9353</b>	<b>Government procedure, coded</b>	<b>C an..3</b>	<b>X</b>
		Code identifying the treatment applied by the government to goods which are subject to a control.		

**Group:** **NAD** Segment Group 4: Name and Address

**Position:** 0190

**Group:**

**Level:** 1

**Usage:** Conditional (Required)

**Max Use:** 5

**Purpose:** A group of segments to identify a party and related contacts and references.

**Notes:** This group is used to identify the entities related with the whole manifest. All these qualifiers/functions in this group must be sent.

The identification of the Customs office was included since some ports have areas under jurisdiction of different Customs office. So the agent shall identify to which office is declaring the cargo. For this information, send code 'CM' in NAD:3035.

The inclusion of the message sender (NAD:3035='MS') and the message receiver (NAD:3035='MR') is to separate the business level from the practical issues. For instance, allow that the entity that is sending the document can be different from the one which is the originator of the document. The same applies to the receiver versus the destination.

The information about the transport documents can only be sent by the carrier's agent, cargo agent or by a legal Declarant's agent/representative. In these cases, information of the cargo agent on the CNI section must match with the information of this group (only the information of one carrier agente or cargo agent can be sent).

In the communication between the Shipping Agents and the Port Authorities, the Message Receiver (MR) is the Port Authority. In this case the receiver can be identified by the NIF or by the EAN of the corresponding Port Authority.

In the communication between the Port Authority and Customs, the receiver is the Customs identified by Customs Office Identification Code.

Segment Group 5 given information related with the Contact Information is to be used only when NAD:3035 is 'AE' or 'CG'.

#### Segment Summary

	<b>Pos.</b>	<b>Seg.</b>	<b>Name</b>	<b>Req.</b>	<b>Max.</b>	<b>Group:</b>
	<b>No.</b>	<b>ID</b>		<b>Des.</b>	<b>Use</b>	<b>Repeat</b>
M	0200	NAD	Name and Address	M	1	
	0210		Segment Group 5: Contact Information	C		1

**Segment:** **NAD** Name and Address  
**Position:** 0200 (Trigger Segment)  
**Group:** SG4  
**Level:** 1  
**Usage:** Mandatory  
**Max Use:** 1  
**Purpose:** A segment to identify the party's name, address and function.

**Dependency Notes:**

**Semantic Notes:**

**Comments:**

**Notes:** Today several entities have EAN codes. When the receiver or the sender is one of this entities, the respective code can be used. In this case DE:1131 shall not be used and DE:3055 must be '9'.

Example: Shipping agent with tax number 510042365789.

NAD+CG+510042365789:167:155'

Example: Manifest to be presented to the customs office of Maritima de Lisbon.

NAD+CM+PTLIS040:113:155'

Example: Message recipient is the Port Authority of Leixoes identified by EAN code 5600000017340

NAD+MR+5600000017340::9'

**Data Element Summary**

<u>Data Element</u>	<u>Component Element</u>	<u>Name</u>	<u>Base Attributes</u>	<u>User Attributes</u>
3035		<b>PARTY QUALIFIER</b>	<b>M an..3</b>	<b>M</b>
		Code giving specific meaning to a party.		
	AE	Declarant's agent/representative Any natural or legal person who makes a declaration to an official body on behalf of another natural or legal person, where legally permitted (CCC).		
	CG	Carrier's agent Party authorized to act for or on behalf of carrier. In this context corresponds to the Shipping Agent that is responsible for the vessel call.		
	CM	Customs Identification of customs authority relevant to the transaction or shipment.		
	CV	Consignee of vessel Description to be provided. <i>Only provided for backward compatibility. It will be treated like code 'CG'.</i>		

	MR	Message recipient Receiver of the message.		
	MS	Document/message issuer/sender Issuer of a document and/or sender of a message.		
<b>C082</b>	<b>PARTY IDENTIFICATION DETAILS</b>		<b>C</b>	<b>R</b>
		Identification of a transaction party by code.		
<b>3039</b>	<b>Party id. identification</b>		<b>M an..35</b>	<b>M</b>
		Code identifying a party involved in a transaction. If 3035 in ('AE', 'CG', 'MR', 'MS') send tax payer number.  If the message receiver is the Port Authority of Lisbon or Leixões, then EAN code can also be used as an identification means of these authorities.  If 3035 is 'CM' send code according to list in pages 71-72 of NSTI/NCTS Declaração de Trânsito Informatizada - Documento Auxiliar ao Guia de Implementação das Mensagens EDI Versão 3, Anexo - Códigos a Utilizar.  If 3035 is 'CG', the identification will be checked against the information about the agent associated with the vessel call provided to the Port Authority (according with the procedures of "Processo Meio Transporte").		
<b>1131</b>	<b>Code list qualifier</b>		<b>C an..3</b>	<b>R</b>
		Identification of a code list.		
	113	Customs office Customs administrative unit competent for the performance of Customs formalities, and the premises or other areas approved for the purpose by the competent authorities (CCC).		
	167	Tax party identification Code assigned by a tax authority to identify a party.		
<b>3055</b>	<b>Code list responsible agency, coded</b>		<b>C an..3</b>	<b>R</b>
		Code identifying the agency responsible for a code list.		
	9	EAN (International Article Numbering association)		
	155	PT, Portuguese Customs		
<b>C058</b>	<b>NAME AND ADDRESS</b>		<b>C</b>	<b>D</b>
		Unstructured name and address: one to five lines. This composite element is needed when the entity identified in the segment is the message sender (DE:3035 = MS). This way the response can be directed to the appropriate destination.  If the Data Entry application is being used, the sent value identifies the Data Entry installation.  Otherwise, it identifies a point of origin of the message.		
<b>3124</b>	<b>Name and address line</b>		<b>M an..35</b>	<b>M</b>
		Free form name and address description. Use this element to specify the identification of the Data Entry installation.		
<b>3124</b>	<b>Name and address line</b>		<b>C an..35</b>	<b>X</b>

Common Platform - Manifest Message Format - Version 1.3j2

	Free form name and address description.			
	<b>3124 Name and address line</b>	<b>C</b>	<b>an..35</b>	<b>X</b>
	Free form name and address description.			
	<b>3124 Name and address line</b>	<b>C</b>	<b>an..35</b>	<b>X</b>
	Free form name and address description.			
	<b>3124 Name and address line</b>	<b>C</b>	<b>an..35</b>	<b>X</b>
	Free form name and address description.			
<b>C080</b>	<b>PARTY NAME</b>	<b>C</b>		<b>X</b>
	Identification of a transaction party by name, one to five lines. Party name may be formatted.			
	<b>3036 Party name</b>	<b>M</b>	<b>an..35</b>	<b>X</b>
	Name of a party involved in a transaction.			
	<b>3036 Party name</b>	<b>C</b>	<b>an..35</b>	<b>X</b>
	Name of a party involved in a transaction.			
	<b>3036 Party name</b>	<b>C</b>	<b>an..35</b>	<b>X</b>
	Name of a party involved in a transaction.			
	<b>3036 Party name</b>	<b>C</b>	<b>an..35</b>	<b>X</b>
	Name of a party involved in a transaction.			
	<b>3036 Party name</b>	<b>C</b>	<b>an..35</b>	<b>X</b>
	Name of a party involved in a transaction.			
	<b>3045 Party name format, coded</b>	<b>C</b>	<b>an..3</b>	<b>X</b>
	Specification of the representation of a party name.			
<b>C059</b>	<b>STREET</b>	<b>C</b>		<b>X</b>
	Street address and/or PO Box number in a structured address: one to three lines.			
	<b>3042 Street and number/p.o. box</b>	<b>M</b>	<b>an..35</b>	<b>X</b>
	Street and number in plain language, or Post Office Box No.			
	<b>3042 Street and number/p.o. box</b>	<b>C</b>	<b>an..35</b>	<b>X</b>
	Street and number in plain language, or Post Office Box No.			
	<b>3042 Street and number/p.o. box</b>	<b>C</b>	<b>an..35</b>	<b>X</b>
	Street and number in plain language, or Post Office Box No.			
	<b>3042 Street and number/p.o. box</b>	<b>C</b>	<b>an..35</b>	<b>X</b>
	Street and number in plain language, or Post Office Box No.			
<b>3164</b>	<b>CITY NAME</b>	<b>C</b>	<b>an..35</b>	<b>X</b>
	Name of a city (a town, a village) for addressing purposes.			
<b>3229</b>	<b>COUNTRY SUB-ENTITY IDENTIFICATION</b>	<b>C</b>	<b>an..9</b>	<b>X</b>
	Identification of the name of sub-entities (state, province) defined by appropriate governmental agencies.			
<b>3251</b>	<b>POSTCODE IDENTIFICATION</b>	<b>C</b>	<b>an..9</b>	<b>X</b>
	Code defining postal zones or addresses.			
<b>3207</b>	<b>COUNTRY, CODED</b>	<b>C</b>	<b>an..3</b>	<b>D</b>

Identification of the name of a country or other geographical entity as specified in ISO 3166.

This data element is needed when the entity identified in the segment is the message sender (DE:3035 = MS). This way the response can be directed to the appropriate destination.

If the Data Entry application is being used, the sent value identifies the Data Entry installation.

Otherwise, it identifies a point of origin of the message.



**Group:** **CTA** Segment Group 5: Contact Information  
**Position:** 0210  
**Group:** Segment Group 4 (Name and Address) Conditional (Required)  
**Level:** 2  
**Usage:** Conditional (Dependent)  
**Max Use:** 1  
**Purpose:** A group of segments to identify a contact and its communications related to the party.  
**Notes:** Display the person(s) or the specific department to be contacted for any matter related with this message, and the channel by which can be reached.

**Segment Summary**

	<b>Pos.</b>	<b>Seg.</b>		<b>Req.</b>	<b>Max.</b>	<b>Group:</b>
	<b><u>No.</u></b>	<b><u>ID</u></b>	<b><u>Name</u></b>	<b><u>Des.</u></b>	<b><u>Use</u></b>	<b><u>Repeat</u></b>
M	0220	CTA	Contact Information	M	1	
R	0230	COM	Communication Contact	C	9	

**Segment:** **CTA** **Contact Information**  
**Position:** 0220 (Trigger Segment)  
**Group:** SG4-SG5  
**Level:** 2  
**Usage:** Mandatory  
**Max Use:** 1  
**Purpose:** A segment to identify a person or department within the party.  
**Dependency Notes:**  
**Semantic Notes:**  
**Comments:**  
**Notes:** Example: Contact Mr. José Silva.

CTA+BF+:JOSE SILVA'

**Data Element Summary**

<u>Data Element</u>	<u>Component Element</u>	<u>Name</u>	<u>Base Attributes</u>	<u>User Attributes</u>
3139		<b>CONTACT FUNCTION, CODED</b>	<b>C an..3</b>	<b>R</b>
		Code specifying the function of a contact (e.g. department or person).		
		BF Service contact		
		Department/person to be contacted in service matters.		
		IC Information contact		
		Department/person to contact for questions regarding transactions.		
C056		<b>DEPARTMENT OR EMPLOYEE DETAILS</b>	<b>C</b>	<b>R</b>
		Code and/or name of a department or employee. Code preferred.		
	3413	<b>Department or employee identification</b>	<b>C an..17</b>	<b>O</b>
		Internal identification code.		
		<i>Only provided for backward compatibility. Information will be treated like the one in 3412. Do not use 3413 and 3412 simultaneously.</i>		
	3412	<b>Department or employee</b>	<b>C an..35</b>	<b>R</b>
		The department or person within an organizational entity.		

**Segment:** **COM** **Communication Contact**  
**Position:** 0230  
**Group:** SG4-SG5  
**Level:** 3  
**Usage:** Conditional (Required)  
**Max Use:** 9  
**Purpose:** A segment to identify a communication number of a person or department to whom communication should be directed.

**Dependency Notes:**

**Semantic Notes:**

**Comments:**

**Notes:** Example: Contact by phone number 229390700.

COM+229390700:TE'

Example: Contact by email john.mclane@mybusiness.com

COM+JOHN.MCLANE AT MYBUSINESS.COM:EM'

**Data Element Summary**

<u>Data Element</u>	<u>Component Element</u>	<u>Name</u>	<u>Base Attributes</u>	<u>User Attributes</u>
C076		COMMUNICATION CONTACT	M	M
		Communication number of a department or employee in a specified channel.		
	3148	<b>Communication number</b>	M an..512	M
		The communication number.		
	3155	<b>Communication channel qualifier</b>	M an..3	M
		Code identifying the type of communication channel being used.		
		UN/EDIFACT code list for Data Element 3155.		

**Group:** **TDT** Segment Group 8: Details of Transport  
**Position:** 0350  
**Group:**  
**Level:** 1  
**Usage:** Conditional (Optional)  
**Max Use:** 1  
**Purpose:** A group of segments to describe all transport details of the voyage/flight or consolidation and of all parties involved.  
**Notes:** The information referred in this segment is to be given to the Port Authority through another process defined by "Processo de Meio de Transporte" specification. The connection between the document (manifest) and the means of transport is made through the Vessel Call Id stated in the SG1:RFF with SG1:RFF:1153 having 'ATZ' qualifier code.  
 Although the information provided in this group will be not inserted into the application, data will be used for validation purposes against the information provided in the "Processo de Meio de Transporte".  
 This group is only required to the Port of Lisbon and to the Port of Sines.

**Segment Summary**

	<b>Pos.</b>	<b>Seg.</b>		<b>Req.</b>	<b>Max.</b>	<b>Group:</b>
	<b><u>No.</u></b>	<b><u>ID</u></b>	<b><u>Name</u></b>	<b><u>Des.</u></b>	<b><u>Use</u></b>	<b><u>Repeat</u></b>
M	0360	TDT	Details of Transport	M	1	
O	0380	LOC	Place/Location Identification	C	9	
O	0390	DTM	Date/Time/Period	C	9	

**Segment:** **TDT** **Details of Transport**  
**Position:** 0360 (Trigger Segment)  
**Group:** SG8  
**Level:** 1  
**Usage:** Mandatory  
**Max Use:** 1  
**Purpose:** A segment to indicate information related to a certain stage of the transport, such as mode, means, type of means of transport, carrier, voyage/flight number, etc.

**Dependency Notes:**

**Semantic Notes:**

**Comments:**

**Notes:** The information referred in this segment is to be given to the Port Authority through another process defined by "Processo de Meio de Transporte" specification.

Example: Maritime main-carriage transport, journey 872N of vessel MING ASIA with IMO number 973146, register in Portugal.

TDT+20+872N+1+++++973146:146:54:MING ASIA:PT'

**Data Element Summary**

<u>Data Element</u>	<u>Component Element</u>	<u>Name</u>	<u>Base Attributes</u>	<u>User Attributes</u>
8051		<b>TRANSPORT STAGE QUALIFIER</b>	<b>M an..3</b>	<b>M</b>
		Qualifier giving a specific meaning to the transport details.		
	20	Main-carriage transport		
		The primary stage in the movement of cargo from the point of origin to the intended destination.		
8028		<b>CONVEYANCE REFERENCE NUMBER</b>	<b>C an..17</b>	<b>R</b>
		Unique reference given by the carrier to a certain journey or departure of a means of transport (generic term).		
C220		<b>MODE OF TRANSPORT</b>	<b>C</b>	<b>R</b>
		Method of transport code or name. Code preferred.		
	8067	<b>Mode of transport, coded</b>	<b>C an..3</b>	<b>R</b>
		Coded method of transport used for the carriage of the goods.		
		UN/CEFACT Trade Facilitation Recommendation 19 - Codes for Modes of Transport.		
	1	Maritime Transport		
	8066	<b>Mode of transport</b>	<b>C an..17</b>	<b>X</b>
		Method of transport used for the carriage of the goods.		
C228		<b>TRANSPORT MEANS</b>	<b>C</b>	<b>X</b>
		Code and/or name identifying the type of means of transport.		
	8179	<b>Type of means of transport identification</b>	<b>C an..8</b>	<b>X</b>
		Code defining the type of the means of transport being utilized.		
	8178	<b>Type of means of transport</b>	<b>C an..17</b>	<b>X</b>
		Description of the type of the means of transport being utilized.		

Common Platform - Manifest Message Format - Version 1.3j2

<b>C040</b>	<b>CARRIER</b>	<b>C</b>	<b>X</b>
	Identification of a carrier by code and/or by name. Code preferred.		
<b>3127</b>	<b>Carrier identification</b>	<b>C an..17</b>	<b>X</b>
	Identification of party undertaking or arranging transport of goods between named points.		
<b>1131</b>	<b>Code list qualifier</b>	<b>C an..3</b>	<b>X</b>
	Identification of a code list.		
<b>3055</b>	<b>Code list responsible agency, coded</b>	<b>C an..3</b>	<b>X</b>
	Code identifying the agency responsible for a code list.		
<b>3128</b>	<b>Carrier name</b>	<b>C an..35</b>	<b>X</b>
	Name of party undertaking or arranging transport of goods between named points.		
<b>8101</b>	<b>TRANSIT DIRECTION, CODED</b>	<b>C an..3</b>	<b>X</b>
	Identification of the point of origin and point of direction.		
<b>C401</b>	<b>EXCESS TRANSPORTATION INFORMATION</b>	<b>C</b>	<b>X</b>
	To provide details of reason for, and responsibility for, use of transportation other than normally utilized.		
<b>8457</b>	<b>Excess transportation reason, coded</b>	<b>M an..3</b>	<b>X</b>
	Indication of reason for excess transportation.		
<b>8459</b>	<b>Excess transportation responsibility, coded</b>	<b>M an..3</b>	<b>X</b>
	Indication of responsibility for excess transportation.		
<b>7130</b>	<b>Customer authorization number</b>	<b>C an..17</b>	<b>X</b>
	Customer provided authorization number to allow supplier to ship goods under specific freight conditions. This number will be transmitted back to customer in the dispatch advice message.		
<b>C222</b>	<b>TRANSPORT IDENTIFICATION</b>	<b>C</b>	<b>R</b>
	Code and/or name identifying the means of transport.		
<b>8213</b>	<b>Id. of means of transport identification</b>	<b>C an..9</b>	<b>R</b>
	Identification of the means of transport by name or number.		
	IMO number.		
	The IMO number will be checked against the information about the agent associated with the vessel call provided to the Port Authority (according with the procedures of "Processo Meio Transporte").		
<b>1131</b>	<b>Code list qualifier</b>	<b>C an..3</b>	<b>R</b>
	Identification of a code list.		
	146	Means of transport identification	
		Code identifying the name or number of a means of transport (vessel, vehicle).	
<b>3055</b>	<b>Code list responsible agency, coded</b>	<b>C an..3</b>	<b>R</b>
	Code identifying the agency responsible for a code list.		
	54	IMO (International Maritime Organisation)	
		International Maritime Organisation.	

ZAP

*Only provided for backward compatibility. It will be treated like code '54'.*

<b>8212</b>	<b>Id. of the means of transport</b>	<b>C</b>	<b>an..35</b>	<b>O</b>
	Identification of the means of transport by name or number. Vessel name.			
<b>8453</b>	<b>Nationality of means of transport, coded</b>	<b>C</b>	<b>an..3</b>	<b>O</b>
	Coded name of the country in which a means of transport is registered. Use ISO 3166, country code (alphabetic of 2).			
<b>8281</b>	<b>TRANSPORT OWNERSHIP, CODED</b>	<b>C</b>	<b>an..3</b>	<b>X</b>
	Code indicating the ownership of the means of transport.			

**Segment:** **LOC** **Place/Location Identification**  
**Position:** 0380  
**Group:** SG8  
**Level:** 2  
**Usage:** Conditional (Optional)  
**Max Use:** 9  
**Purpose:** A segment indicating relevant locations related to the transport of the consolidation (e.g. place of loading, place of discharge, transshipment place etc.) dependent on the transport stage.

**Dependency Notes:**

**Semantic Notes:**

**Comments:**

**Notes:** Example: Next port of call: Leixões.

LOC+61+PTLEI:139:6'

*Only provided for backward compatibility. The information referred in this segment is to be given to the Port Authority through another process defined by "Processo de Meio de Transporte" specification.*

**Data Element Summary**

<u>Data Element</u>	<u>Component Element</u>	<u>Name</u>	<u>Base Attributes</u>	<u>User Attributes</u>
3227		<b>PLACE/LOCATION QUALIFIER</b> Code identifying the function of a location.	<b>M an..3</b>	<b>M</b>
	61	Next port of call Next port which the vessel is going to call upon.		
	92	Routing Indication of a routing place.		
C517		<b>LOCATION IDENTIFICATION</b> Identification of a location by code or name.	<b>C</b>	<b>R</b>
	3225	<b>Place/location identification</b> Identification of the name of place/location, other than 3164 City name.	<b>C an..25</b>	<b>R</b>
		UN/ECE Recommendation 16 (3rd edition) - UN/LOCODE - Codes for Ports and Other Locations (Doc. Ref. ECE/TRADE/227) upgraded to 2003.2 version.		
	1131	<b>Code list qualifier</b> Identification of a code list.	<b>C an..3</b>	<b>R</b>
	139	Port A location having facilities for means of transport to load or discharge cargo.		
	3055	<b>Code list responsible agency, coded</b> Code identifying the agency responsible for a code list.	<b>C an..3</b>	<b>R</b>
	6	UN/ECE (United Nations - Economic Commission for Europe)		
	3224	<b>Place/location</b> Name of place/location, other than 3164 City name.	<b>C an..70</b>	<b>O</b>



		Name of the place/port. It is mandatory if the UN/LOCODE in the data element 3225 is omitted.		
<b>C519</b>	<b>RELATED LOCATION ONE IDENTIFICATION</b>	<b>C</b>		<b>X</b>
	Identification the first related location by code or name.			
<b>3223</b>	<b>Related place/location one identification</b>	<b>C</b>	<b>an..25</b>	<b>X</b>
	Specification of the first related place/location by code.			
<b>1131</b>	<b>Code list qualifier</b>	<b>C</b>	<b>an..3</b>	<b>X</b>
	Identification of a code list.			
<b>3055</b>	<b>Code list responsible agency, coded</b>	<b>C</b>	<b>an..3</b>	<b>X</b>
	Code identifying the agency responsible for a code list.			
<b>3222</b>	<b>Related place/location one</b>	<b>C</b>	<b>an..70</b>	<b>X</b>
	Specification of the first related place/location by name.			
<b>C553</b>	<b>RELATED LOCATION TWO IDENTIFICATION</b>	<b>C</b>		<b>X</b>
	Identification of second related location by code or name.			
<b>3233</b>	<b>Related place/location two identification</b>	<b>C</b>	<b>an..25</b>	<b>X</b>
	Specification of a second related place/location by code.			
<b>1131</b>	<b>Code list qualifier</b>	<b>C</b>	<b>an..3</b>	<b>X</b>
	Identification of a code list.			
<b>3055</b>	<b>Code list responsible agency, coded</b>	<b>C</b>	<b>an..3</b>	<b>X</b>
	Code identifying the agency responsible for a code list.			
<b>3232</b>	<b>Related place/location two</b>	<b>C</b>	<b>an..70</b>	<b>X</b>
	Specification of a second related place/location by name.			
<b>5479</b>	<b>RELATION, CODED</b>	<b>C</b>	<b>an..3</b>	<b>X</b>
	To specify the relationship between two or more items.			

**Segment:** **DTM** Date/Time/Period  
**Position:** 0390  
**Group:** SG8  
**Level:** 2  
**Usage:** Conditional (Optional)  
**Max Use:** 9  
**Purpose:** A segment indicating pertinent date(s) and time(s) (e.g. date of departure/arrival etc.) dependent on the transport stage.

**Dependency Notes:**

**Semantic Notes:**

**Comments:**

**Notes:** Example: ETD for 2003/10/02 06:00

DTM+133:200310020600:203'

Example: Attention that in this case the defined escape character must be used in the date/time format, if the time zone is positive in relation to GMT. If the escape character is '?' then

DTM+133:200310081525?+03:303'

*Only provided for backward compatibility. The information referred in this segment is to be given to the Port Authority through another process defined by "Processo de Meio de Transporte" specification.*

**Data Element Summary**

<u>Data Element</u>	<u>Component Element</u>	<u>Name</u>	<u>Base Attributes</u>	<u>User Attributes</u>
C507		<b>DATE/TIME/PERIOD</b>	<b>M</b>	<b>M</b>
		Date and/or time, or period relevant to the specified date/time/period type.		
	<b>2005</b>	<b>Date/time/period qualifier</b>	<b>M an..3</b>	<b>M</b>
		Code giving specific meaning to a date, time or period.		
		132 Arrival date/time, estimated (2348) Date/time when carrier estimates that a means of transport should arrive at the port of discharge or place of destination.		
		133 Departure date/time, estimated Date/time when carrier estimates that a means of transport should depart at the place of departure.		
	<b>2380</b>	<b>Date/time/period</b>	<b>C an..35</b>	<b>R</b>
		The value of a date, a date and time, a time or of a period in a specified representation. According with UN/ECE Recommendation N°7.		
	<b>2379</b>	<b>Date/time/period format qualifier</b>	<b>C an..3</b>	<b>R</b>
		Specification of the representation of a date, a date and time or of a period.		
		203 CCYYMMDDHHMM Calendar date including time with minutes: C=Century; Y=Year; M=Month; D=Day; H=Hour; M=Minutes.		

Common Platform - Manifest Message Format - Version 1.3j2

303

CCYYMMDDHHMMZZZ

See 203 plus Z=Time zone.

<b>Group:</b>	<b>CNI Segment Group 19: Consignment Information</b>
<b>Position:</b>	0860
<b>Group:</b>	
<b>Level:</b>	1
<b>Usage:</b>	Conditional (Optional)
<b>Max Use:</b>	9999
<b>Purpose:</b>	<p>A segment group to give information about all consignments included in a voyage/flight or consolidation. The segment group can be used in two different manners to serve different approaches to consolidate messages:</p> <ul style="list-style-type: none"><li>- Short form consolidation message</li></ul> <p>In this situation, single consignment based functional messages (e.g. booking and/or instruction messages) have been sent on a progressive basis between exchanging partners (e.g. freight forwarder on the export side to freight forwarder on the import side). When the loading of the vessel/aircraft or consolidation is complete the IFCSUM-message will be sent and will use the CNI-segments to identify the transport document/message number (e.g. bill of lading, air-way bill, etc.) of every consignment, the details of which have already been sent as separate single consignment based messages (e.g. booking and/or instruction messages) or which will be sent as separate single consignment based messages following the IFCSUM-message using the option of grouping with the UNG-service-segment in a transmission. When the carrier himself loads consignments in a container or ULD the segment SGP and/or TPL following the CNI can be used to indicate in which equipment specified in the EQD-group on top level and/or which means of transport specified in the TDT-group on top level the consignment is loaded. Thus the short form IFCSUM-message operates as a reconciliation and control statement.<li>- Extended form consolidation message</li><p>In this situation, the data for each individual consignment has NOT been sent to the receiving partner by means of single consignment based messages (e.g. booking and/or instruction messages) separate to the IFCSUM message. In these circumstances it is possible to include the details of each consignment into the IFCSUM-message. In that case the segment (group) SGP and TPL following the segment CNI will not be used. For every consignment the complete structure of a single consignment based message can be used starting with the segment CNI replacing the BGM. Thus the extended form IFCSUM-message has not the function of referencing but to show as full a set of consignment data as is necessary to meet the requirements of type of consolidation message being constructed, e.g. Cargo vs. Full Freight.</p></p>
<b>Notes:</b>	<p>This group is to provide the data related with the Document of Transport under which the cargo is being transported into/from the port. Typically the document is the Bill of Lading, but not exclusively.</p> <p>Somehow the transport document must be identified clearly. This implies that unique keys must exist. Being aware that there isn't an "universal" numbering system that would prevent different documents of having the same identification, the identification key must be found by composing some other available data. This way, the goal is achieved but avoiding unnecessary impacts in current business processes.</p> <p>In this framework, the transport documents presented in this segment group, will</p>

be identified by a key composed of the following data elements (all present in SG19):

- SG26:RFF:1153
- SG26:RFF:1154
- SG26:DTM:2380
- SG34:NAD:3039

Nowadays in the context of shipping, as in business in general, processes are supported by information systems with enough power to deal with a set of data as a single item, without creating additional impact to the user and without affecting the business role of that data. This means that concatenation is not needed and must be avoided. The key must be determined by considering the elements above, but respecting the independent nature of each one.

### Segment Summary

	<b>Pos. No.</b>	<b>Seg. ID</b>	<b>Name</b>	<b>Req. Des.</b>	<b>Max. Use</b>	<b>Group: Repeat</b>
M	0870	CNI	Consignment Information	M	1	
R	1010	CNT	Control Total	C	6	
O	1050	FTX	Free Text	C	4	
	1060		Segment Group 24: Place/Location Identification	C		5
	1120		Segment Group 26: Reference	C		999
	1400		Segment Group 31: Details of Transport	C		2
	1500		Segment Group 34: Name and Address	C		9
	1820		Segment Group 41: Goods Item Details	C		999
	2570		Segment Group 60: Equipment Details	C		999

**Segment:** **CNI** **Consignment Information**  
**Position:** 0870 (Trigger Segment)  
**Group:** SG19  
**Level:** 1  
**Usage:** Mandatory  
**Max Use:** 1  
**Purpose:** A segment to indicate consignments included in the consolidation using the transport document/message number or to replace the segment BGM of a single consignment based message structure.

**Dependency Notes:**

**Semantic Notes:**

**Comments:**

**Notes:** Example: Third consignment in the manifest.

CNI+3'

*The distinction provided by element 1373 is implemented by the usage of segment group 26.*

**Data Element Summary**

<u>Data Element</u>	<u>Component Element</u>	<u>Name</u>	<u>Base Attributes</u>	<u>User Attributes</u>
1490		<b>CONSOLIDATION ITEM NUMBER</b> Serial number differentiating each separate consignment included in the consolidation. Must be unique for in each manifest.	C n..4	R
C503		<b>DOCUMENT/MESSAGE DETAILS</b> Identification of document/message by number, status, source and/or language.	C	O
	1004	<b>Document/message number</b> Reference number assigned to the document/message by the issuer. <i>Only provided for backward compatibility. Information in the element will be treated like RFF:1154 in segment group 26.</i>	C an..35	O
	1373	<b>Document/message status, coded</b> To identify the status of a document/message. <i>Only provided for backward compatibility. Information in the element will be ignored.</i>	C an..3	O
		ZZ1 <i>Only provided for backward compatibility. It will be treated like a goods consignment except empty container bill (RFF:1153='AEW') and travel service (RFF='AUE').</i>		
		ZZ2 <i>Only provided for backward compatibility. It will be treated like travel service (RFF:1153='AUE').</i>		
		ZZ3 <i>Only provided for backward compatibility. It will be treated like empty container bill (RFF:1153='AEW').</i>  <i>Note that this code is presently used to specify that the consignment is related with empty containers. New implementations are advised to use 'AEW'.</i>		

Common Platform - Manifest Message Format - Version 1.3j2

<b>1366</b>	<b>Document/message source</b>	<b>C</b>	<b>an..35</b>	<b>X</b>
	Indication of the source from which the printed information is to be or has been obtained.			
<b>3453</b>	<b>Language, coded</b>	<b>C</b>	<b>an..3</b>	<b>X</b>
	Code of language (ISO 639-1988).			
<b>1312</b>	<b>CONSIGNMENT LOAD SEQUENCE NUMBER</b>	<b>C</b>	<b>n..4</b>	<b>X</b>
	To indicate the sequence of loading in which the consignments are loaded in a piece of equipment or in a means of transport (e.g. truck).			

**Segment:** **CNT** Control Total  
**Position:** 1010  
**Group:** SG19  
**Level:** 2  
**Usage:** Conditional (Required)  
**Max Use:** 6  
**Purpose:** A segment to specify totals for a consignment.  
**Dependency Notes:**  
**Semantic Notes:**  
**Comments:**

**Notes:** At least information about the number of packages/volumes (CNT:6069='11') must be sent. In case of bulk cargo the number of volumes is 1.

Example: Consignment total gross weight: 21.000 Kg.

CNT+7:2100000:KGM'

Example: Total quantity of volumes present in the consignment: 20.

CNT+11:20'

*For backward compatibility, more than one occurrence is accepted, but information will be ignored.*

#### Data Element Summary

<u>Data Element</u>	<u>Component Element</u>	<u>Name</u>	<u>Base Attributes</u>	<u>User Attributes</u>
C270		CONTROL	M	M
		Control total for checking integrity of a message or part of a message.		
	6069	Control qualifier	M an..3	M
		Determines the source data elements in the message which forms the basis for 6066 Control value.		
		7	Total gross weight	
			Code to indicate total gross weight of a consignment.	
		11	Total number of packages	
			[7370] Total number of packages of the entire consignment.	
		16	Total number of equipment	
			Total number of equipment mentioned in the message.	
		26	Total gross measurement/cube	
			Total gross cubic measurement of the goods, including packing but excluding transport equipment.	
		30	Total number of empty containers	
			The total number of empty containers mentioned in the message.	
	6066	Control value	M n..18	M
		Value obtained from summing the values specified by the Control Qualifier throughout the message (Hash total).		



**6411 Measure unit qualifier**

**C an..3 D**

Indication of the unit of measurement in which weight (mass), capacity, length, area, volume or other quantity is expressed.

UN/CEFACT Trade Facilitation Recommendation 20 - Codes for Units of Measure used in international trade - Annex II.

KGM kilogram

Use when 6069 is '7'.

MTQ cubic meter

Use when 6069 is '26'.

**Segment:** **FTX** Free Text  
**Position:** 1050  
**Group:** SG19  
**Level:** 2  
**Usage:** Conditional (Optional)  
**Max Use:** 4  
**Purpose:** A segment to specify free form or processable supplementary information, such as status of transport, remarks to be printed on the transport documents (where required), consignment remarks, insurance instructions, etc., or any other additional information.

**Dependency Notes:**

**Semantic Notes:**

**Comments:**

**Notes:**

This segment may be used to send several information related with the transport document.

If DE:4451 is 'AAI' then the segment is being used for sending general information.

If DE:4451 is 'BLR' then the segment contains remarks present in the transport document.

If DE:4451 is 'CHG' then the segment contains the reasons why the transport document is being changed. This usage is required always a transport document is being changed. That is, when the values of BGM:1225 is in {'2','3','4'}.

If DE:4451 is 'CUS' then the segment states whether there is an unique transport contract involved in the transportation process or not. If positive, the segment allows to state if the expression "EXPORT" is printed or not in the unique transport contract.

Example: For the Port Authority only. In case there are goods exempted under article 20, the article and the item should be indicated here for discount purposes. There will be a codification for goods that are not subject of "TUP Carga" charges.

FTX+AAI+++GOODS UNDER ARTICLE 20'

Example: The process involves an unique transport contract that does not have the expression "EXPORT" printed.

FTX+CUS+++YES:NO'

**Data Element Summary**

<b>Data</b>	<b>Component</b>		<b>Base</b>	<b>User</b>
<u>Element</u>	<u>Element</u>	<u>Name</u>	<u>Attributes</u>	<u>Attributes</u>
4451		TEXT SUBJECT QUALIFIER	M an..3	M
		Code specifying subject of a free text.		
		AAI	General information	
		AAS	Bill of lading remarks	

Common Platform - Manifest Message Format - Version 1.3j2

					<i>Only provided for backward compatibility. It will be treated like code 'BLR'.</i>
	BLR	Transport document remarks			Remarks concerning the complete consignment to be printed on the bill of lading.
	CHG	Change information			Note contains change information.
	CUS	Customs declaration information			Note contains customs declaration information.
					The usage of this qualifier is to state if there is an unique transport contract involved in this transport process. If this is the case, then this qualifier is also used to state if the unique transport contract has been marked with the "EXPORT" expression or not.
4453		<b>TEXT FUNCTION, CODED</b>	<b>C</b>	<b>an..3</b>	<b>X</b>
		Code specifying how to handle the text.			
C107		<b>TEXT REFERENCE</b>	<b>C</b>		<b>X</b>
		Coded reference to a standard text and its source.			
	4441	<b>Free text identification</b>	<b>M</b>	<b>an..17</b>	<b>X</b>
		Free text in coded form.			
	1131	<b>Code list qualifier</b>	<b>C</b>	<b>an..3</b>	<b>X</b>
		Identification of a code list.			
	3055	<b>Code list responsible agency, coded</b>	<b>C</b>	<b>an..3</b>	<b>X</b>
		Code identifying the agency responsible for a code list.			
C108		<b>TEXT LITERAL</b>	<b>C</b>		<b>O</b>
		Free text; one to five lines.			
	4440	<b>Free text</b>	<b>M</b>	<b>an..70</b>	<b>M</b>
		Free text field available to the message sender for information.			
		If element 4451 is 'CUS' then send the word "YES" or the word "NO" to state if there is or there is not an unique transport contract involved in the transport process.			
	4440	<b>Free text</b>	<b>C</b>	<b>an..70</b>	<b>O</b>
		Free text field available to the message sender for information.			
		If element 4451 is 'CUS' then send the word "YES" or the word "NO" to state that the "EXPORT" expression is printed in the unique transport contract or not. This is only to be sent if the first occurrence of 4440 is "YES".			
	4440	<b>Free text</b>	<b>C</b>	<b>an..70</b>	<b>O</b>
		Free text field available to the message sender for information.			
	4440	<b>Free text</b>	<b>C</b>	<b>an..70</b>	<b>O</b>
		Free text field available to the message sender for information.			
	4440	<b>Free text</b>	<b>C</b>	<b>an..70</b>	<b>O</b>
		Free text field available to the message sender for information.			
3453		<b>LANGUAGE, CODED</b>	<b>C</b>	<b>an..3</b>	<b>X</b>
		Code of language (ISO 639-1988).			

**Group:** **LOC** Segment Group 24: Place/Location Identification

**Position:** 1060

**Group:** Segment Group 19 (Consignment Information) Conditional (Optional)

**Level:** 2

**Usage:** Conditional (Required)

**Max Use:** 5

**Purpose:** A group of segments to specify locations and related date(s)/time(s) which apply to the entire consignment, e.g. place of transshipment.

**Notes:** This group is to specify the locations that normally appear in a transport contract (typically a BL). Please note that these places are at contract level and not at operational level.

This group is also used to state the place where the transport document was issued. This usage is a Customs requirement. For this purpose, SG24:LOC:3227 must have code '91'.

All qualifiers and the associated information must be provided.

**Segment Summary**

	<b>Pos.</b>	<b>Seg.</b>		<b>Req.</b>	<b>Max.</b>	<b>Group:</b>
	<b><u>No.</u></b>	<b><u>ID</u></b>	<b><u>Name</u></b>	<b><u>Des.</u></b>	<b><u>Use</u></b>	<b><u>Repeat</u></b>
M	1070	LOC	Place/Location Identification	M	1	

**Segment:** **LOC** Place/Location Identification  
**Position:** 1070 (Trigger Segment)  
**Group:** SG19-SG24  
**Level:** 2  
**Usage:** Mandatory  
**Max Use:** 1  
**Purpose:** A segment to identify a location applying to the entire consignment.  
**Dependency Notes:**  
**Semantic Notes:**  
**Comments:**  
**Notes:**

Example: Place of Receipt: Yantian, Port of Loading: Rotterdam, Port of Discharge: Leixoes

LOC+88+CNYTN:139:6'  
 LOC+9+NLRTM:139:6'  
 LOC+11+PTLEI:139:6'

*Next rules apply to goods consignment (CNI:1373='ZZ1' in the APL project)*

1. *If this is a loading manifest BGM(1001)=833, and 3227=9 then 3225=PTLIS (if the loading port is Lisbon) or PTLEI (if the loading port is Leixões) or PTSIE (if the loading port is Sines) and 1131=139 and 3055=6.*
2. *If this is a discharge manifest BGM(1001)=785 and 3227=11 then 3225=PTLIS (if the discharge port is Lisbon) or PTLEI (if the discharge port is Leixões) or PTSIE (if the discharge port is Sines) and 1131=139 and 3055=6*

*For other consignments (CNI:1373<>'ZZ1' in the APL project)*

1. *In case of B/Ls type ZZ2 or ZZ3 (CNI :1373 = ZZ2 or ZZ3), once the place of origin is unknown, this will be displayed using code ZZZZZ, with literal UNKOWN*
2. *In case of B/Ls type ZZ3 (CNI :1373 = ZZ3), once the place of load is unknown, this will be displayed using code ZZZZZ, with literal UNKOWN*
3. *In case of B/Ls type ZZ2 or ZZ3 (CNI :1373 = ZZ2 or ZZ3), once the place of destination is unknown, this will be displayed using code ZZZZZ, with literal UNKOWN*

*In the case of qualifiers '88', '7' and '91' when the LOCODE is unknown, the country and a brief description of the local must be provided.*

*These rules defined this way are for backward compatibility. The rules will be checked but using different segments and elements in new implementations.*

#### Data Element Summary

Data Element	Component Element	Name	Base Attributes	User Attributes
3227		PLACE/LOCATION QUALIFIER	M an..3	M
		Code identifying the function of a location.		
	5	Place of departure (3214) Port, airport or other location from which a means of transport is scheduled to depart or has departed. <i>Only provided for backward compatibility. It will be treated like '88'.</i>		
	7	Place of delivery (3246) Place to which the goods are to be finally delivered under transport contract terms (operational term).		
	8	Place of destination		

		Port, airport or other location to which a means of transport is destined. <i>Only provided for backward compatibility. It will be treated like '7'.</i>		
	9	Place/port of loading (3334 + 3230) Seaport, airport, freight terminal, rail station or other place at which the goods (cargo) are loaded on to the means of transport being used for their carriage.		
	11	Place/port of discharge (3392 + 3414) Seaport, airport, freight terminal, rail station or other place at which the goods (cargo) are unloaded from the means of transport having been used for their carriage.		
	88	Place of receipt Identification of the location at which the cargo is actually received.		
	91	Place of document issue The place or location where a document is issued.		
<b>C517</b>	<b>LOCATION IDENTIFICATION</b>		<b>C</b>	<b>R</b>
		Identification of a location by code or name.		
<b>3225</b>	<b>Place/location identification</b>		<b>C an..25</b>	<b>R</b>
		Identification of the name of place/location, other than 3164 City name. UN/ECE Recommendation 16 (3rd edition) - UN/LOCODE - Codes for Ports and Other Locations (Doc. Ref. ECE/TRADE/227) upgraded to 2003.2 version. When the Locode is unknown then place the ISO 2-letter country code. In this case element 3224 must be sent.		
<b>1131</b>	<b>Code list qualifier</b>		<b>C an..3</b>	<b>R</b>
		Identification of a code list.		
	139	Port A location having facilities for means of transport to load or discharge cargo.		
	162	Country Identification of a country.		
<b>3055</b>	<b>Code list responsible agency, coded</b>		<b>C an..3</b>	<b>R</b>
		Code identifying the agency responsible for a code list.		
	5	ISO (International Organization for Standardization)		
	6	UN/ECE (United Nations - Economic Commission for Europe)		
<b>3224</b>	<b>Place/location</b>		<b>C an..70</b>	<b>D</b>
		Name of place/location, other than 3164 City name. Name of the place/location. It is required if the UN/LOCODE in the data element 3225 is omitted and only the ISO country code is sent. Only allowed for qualifiers '88', '7' and '91' in element 3227.		
<b>C519</b>	<b>RELATED LOCATION ONE IDENTIFICATION</b>		<b>C</b>	<b>X</b>
		Identification the first related location by code or name.		
<b>3223</b>	<b>Related place/location one identification</b>		<b>C an..25</b>	<b>X</b>

Common Platform - Manifest Message Format - Version 1.3j2

		Specification of the first related place/location by code.			
	<b>1131</b>	<b>Code list qualifier</b>	<b>C</b>	<b>an..3</b>	<b>X</b>
		Identification of a code list.			
	<b>3055</b>	<b>Code list responsible agency, coded</b>	<b>C</b>	<b>an..3</b>	<b>X</b>
		Code identifying the agency responsible for a code list.			
	<b>3222</b>	<b>Related place/location one</b>	<b>C</b>	<b>an..70</b>	<b>X</b>
		Specification of the first related place/location by name.			
<b>C553</b>		<b>RELATED LOCATION TWO IDENTIFICATION</b>	<b>C</b>		<b>X</b>
		Identification of second related location by code or name.			
	<b>3233</b>	<b>Related place/location two identification</b>	<b>C</b>	<b>an..25</b>	<b>X</b>
		Specification of a second related place/location by code.			
	<b>1131</b>	<b>Code list qualifier</b>	<b>C</b>	<b>an..3</b>	<b>X</b>
		Identification of a code list.			
	<b>3055</b>	<b>Code list responsible agency, coded</b>	<b>C</b>	<b>an..3</b>	<b>X</b>
		Code identifying the agency responsible for a code list.			
	<b>3232</b>	<b>Related place/location two</b>	<b>C</b>	<b>an..70</b>	<b>X</b>
		Specification of a second related place/location by name.			
<b>5479</b>		<b>RELATION, CODED</b>	<b>C</b>	<b>an..3</b>	<b>X</b>
		To specify the relationship between two or more items.			

**Group:** **RFF** Segment Group 26: Reference  
**Position:** 1120  
**Group:** Segment Group 19 (Consignment Information) Conditional (Optional)  
**Level:** 2  
**Usage:** Conditional (Required)  
**Max Use:** 999  
**Purpose:** A group of segments containing a reference and constants which apply to the entire consignment.  
**Notes:** This group is used to send any references associated with the consignment, including the document number.

At least the references to the following items are expected:  
 - A transport document according to list provided in DE:1153;  
 - Booking (RFF:1153 in 'BN') before the issue of the transport document. After the transport document is issued it is strongly advised that the booking reference is sent in order to relate the booking with the transport document.

Special care to the situation where segment group 31 with TDT:8067 is '1' and 8051 in the same segment is '10'. In this case this group must be used to send the reference to the previous transport document (RFF:1153 must be 'ANK') and must be used to send the previous Customs vessel call Id, known as "Contramarca" (RFF:1153 must be 'AFM'). If in this group TDT:8067 is '1' and 8051 in the same segment is '30' then the group can be used to send the reference to the next transport document and the next Customs vessel call Id, if known, using the same qualifiers in RFF:1153.

### Segment Summary

	<b>Pos.</b>	<b>Seg.</b>		<b>Req.</b>	<b>Max.</b>	<b>Group:</b>
	<b><u>No.</u></b>	<b><u>ID</u></b>	<b><u>Name</u></b>	<b><u>Des.</u></b>	<b><u>Use</u></b>	<b><u>Repeat</u></b>
M	1130	RFF	Reference	M	1	
R	1140	DTM	Date/Time/Period	C	1	



**Segment:** **RFF** Reference  
**Position:** 1130 (Trigger Segment)  
**Group:** SG19-SG26  
**Level:** 2  
**Usage:** Mandatory  
**Max Use:** 1  
**Purpose:** A segment to express a reference which applies to the entire consignment such as: the document/message number that is to be updated by this very message (according to data element 1225 Message Function, Coded in segment BGM), booking reference, order number, insurance contract, etc.

**Dependency Notes:**

**Semantic Notes:**

**Comments:**

**Notes:** Being aware the booking is just a reference that has associated the same information that later will be part or the whole of a transport document, it will be treated like a transport document if not associated with one. When associated with a transport document, then the booking is treated just like a reference.

All references, except the booking (according to the previous paragraph), must be associated with a transport document.

For each occurrence of segment group 19, if there are several references that correspond to transport documents, then the first to be declared will be considered as the identification of the document being presented in by the group. All others will be considered as references.

Example: BL number DKLI0200001

RFF+BM:DKLI0200001'

**Data Element Summary**

<u>Data Element</u>	<u>Component Element</u>	<u>Name</u>	<u>Base Attributes</u>	<u>User Attributes</u>
C506		REFERENCE	M	M
		Identification of a reference.		
	1153	Reference qualifier	M an..3	M
		Code giving specific meaning to a reference segment or a reference number.		
		AAE Goods declaration number Reference number assigned to a goods declaration. Reference.		
		AAM Waybill number Reference number assigned to a waybill, see: 1001 = 700. Document of Transport.		
		AAO Consignee's shipment reference number [1362] Reference assigned by the consignee to a shipment. Reference.		
		AAS Transport document number		

	[1188] Reference assigned by the carrier or his agent to the transport document.
	Document of Transport.
ABE	Declarant's reference number Unique reference number assigned to a document or a message by the declarant for identification purposes. Reference.
ABH	Sub-house bill of lading number Reference assigned to a sub-house bill of lading. Document of Transport.
ABT	Customs declaration number [1426] Number, assigned or accepted by Customs, to identify a Goods declaration. Reference. Use to inform the Customs Summary Declaration Number.
ACW	Reference number to previous message Reference number assigned to the message which was previously issued (e.g. in the case of a cancellation, the primary reference of the message to be cancelled will be quoted in this element). This code is to be used in scenario of the short form consolidation message. In this case, the group is referring to previous sent single consignment messages.
ADO	Container work order reference number Reference number assigned by the principal to the work order for a (set of) container(s). Reference.
AEI	Registration number of previous Customs declaration Registration number of the Customs declaration lodged for the previous Customs procedure. <i>Only provided for backward compatibility. It will be treated like 'AFM' with SG31:TDT:8051 like '10'.</i>
AEV	Shipping note number Reference number assigned to a shipping note, see: 1001 = 630. Document of Transport.
AEW	Empty container bill number Reference number assigned to an empty container bill, see: 1001 = 708. Document of Transport. Only for empty containers.
AEX	Non-negotiable maritime transport document number Reference number assigned to a sea waybill, see: 1001 = 712. Document of Transport.
AFA	Through bill of lading number Reference number assigned to a through bill of lading, see: 1001 = 761.

Common Platform - Manifest Message Format - Version 1.3j2

	Document of Transport.
AFM	Secondary Customs reference Reference
AHI	Transport contract reference number Reference number of a transport contract. Reference.
AKR	General cargo consignment reference number Reference number identifying a particular general cargo (non -containerised or break bulk) consignment. Reference.
ANK	Reference number assigned by third party Reference number assigned by a third party. Reference. This qualifier is mainly used in the transshipment scenario in order to, at the moment of the loading, inform the previous document of transport under which the goods were unloaded.
AUE	Travel service Reference identifying a travel service. Reference.
AUG	Importer's letter of credit reference Letter of credit reference issued by importer. Reference.
BM	Bill of lading number Reference number assigned to a bill of lading, see: 1001 = 705. Document of Transport.
BN	Booking reference number [1016] Reference number assigned by the carrier or his agent when cargo space is reserved prior to loading. Reference. Refer to the segment notes.
CN	Carrier's reference number Reference number assigned by carrier to a consignment. Reference.
CR	Customer reference number Reference number assigned by the customer to a transaction. Reference.
CU	Consignor's reference number [1140] Reference number assigned by a consignor to a particular shipment for his own purposes or for those of the consignee. Reference.
DQ	Delivery note number Reference number assigned by the issuer to a delivery note. Document of Transport.
MB	Master bill of lading number

				Reference number assigned to a master bill of lading, see: 1001 = 704.
				Document of Transport.
	PK			Packing list number (1014) Reference number assigned to a packing list, see: 1001 = 271.
				Document of Transport.
	UCN			Unique consignment reference number (1202) Unique reference of a consignment (UCRN) used for identification purposes in documents and messages exchanged between parties in international trade. See also: Unique Identifier Code (UNIC) in UN/ECE Recommendation No. 8, March 1992.
				Reference.
<b>1154</b>	<b>Reference number</b>	<b>C</b>	<b>an..35</b>	<b>R</b>
	Identification number the nature and function of which can be qualified by an entry in data element 1153 Reference qualifier.			
<b>1156</b>	<b>Line number</b>	<b>C</b>	<b>an..6</b>	<b>X</b>
	Number of the line in the document/message referenced in 1154 Reference number.			
<b>4000</b>	<b>Reference version number</b>	<b>C</b>	<b>an..35</b>	<b>X</b>
	To uniquely identify a reference by its revision number.			

**Segment:** **DTM** Date/Time/Period  
**Position:** 1140  
**Group:** SG19-SG26  
**Level:** 3  
**Usage:** Conditional (Required)  
**Max Use:** 1  
**Purpose:** A segment to indicate date and time relating to the reference.

**Dependency Notes:**

**Semantic Notes:**

**Comments:**

**Notes:** The complete meaning of this date depends of the type of reference in the previous RFF segment, stated in RFF:C506:1153 data element.

Example: Date of the reference: "2003/10/08 - 10:15"

DTM+171:200310081015:203'

Example: Date of the reference: "2003/10/08 - 15:25 UTC+3". Attention that in this case the defined escape character must be used in the date/time format, if the time zone is positive in relation to GMT. If the escape character is '?' then

DTM+171:200310081525?+03:303'

**Data Element Summary**

<u>Data Element</u>	<u>Component Element</u>	<u>Name</u>	<u>Base Attributes</u>	<u>User Attributes</u>
C507		<b>DATE/TIME/PERIOD</b> Date and/or time, or period relevant to the specified date/time/period type.	<b>M</b>	<b>M</b>
	<b>2005</b>	<b>Date/time/period qualifier</b> Code giving specific meaning to a date, time or period. 171 Reference date/time Date/time on which the reference was issued.	<b>M an..3</b>	<b>M</b>
	<b>2380</b>	<b>Date/time/period</b> The value of a date, a date and time, a time or of a period in a specified representation. According with UN/ECE Recommendation N°7.	<b>C an..35</b>	<b>R</b>
	<b>2379</b>	<b>Date/time/period format qualifier</b> Specification of the representation of a date, a date and time or of a period. 203 CCYYMMDDHHMM Calendar date including time with minutes: C=Century; Y=Year; M=Month; D=Day; H=Hour; M=Minutes. 303 CCYYMMDDHHMMZZZ See 203 plus Z=Time zone.	<b>C an..3</b>	<b>R</b>

**Group:** **TDT** Segment Group 31: Details of Transport  
**Position:** 1400  
**Group:** Segment Group 19 (Consignment Information) Conditional (Optional)  
**Level:** 2  
**Usage:** Conditional (Optional)  
**Max Use:** 2  
**Purpose:** A group of segments to indicate details of the movement of goods such as mode and means of transport, locations, departure, and arrival date(s) and time(s).  
**Notes:** This group can be used to refer the previous and/or next leg of transport.

**Segment Summary**

	<b>Pos.</b>	<b>Seg.</b>		<b>Req.</b>	<b>Max.</b>	<b>Group:</b>
	<b><u>No.</u></b>	<b><u>ID</u></b>	<b><u>Name</u></b>	<b><u>Des.</u></b>	<b><u>Use</u></b>	<b><u>Repeat</u></b>
M	1410	TDT	Details of Transport	M	1	

**Segment:** **TDT** **Details of Transport**  
**Position:** 1410 (Trigger Segment)  
**Group:** SG19-SG31  
**Level:** 2  
**Usage:** Mandatory  
**Max Use:** 1  
**Purpose:** A segment to indicate information related to a certain stage of the transport, such as mode, means and carrier.

**Dependency Notes:**

**Semantic Notes:**

**Comments:**

**Notes:** Example: Previous transport by sea.

TDT+10++1'

**Data Element Summary**

<u>Data Element</u>	<u>Component Element</u>	<u>Name</u>	<u>Base Attributes</u>	<u>User Attributes</u>
8051		<b>TRANSPORT STAGE QUALIFIER</b>	<b>M an..3</b>	<b>M</b>
		Qualifier giving a specific meaning to the transport details.		
	10	Pre-carriage transport Transport by which the goods are moved prior to their main carriage transport.		
	30	On-carriage transport Transport by which the goods are moved after the main carriage transport.		
8028		<b>CONVEYANCE REFERENCE NUMBER</b>	<b>C an..17</b>	<b>X</b>
		Unique reference given by the carrier to a certain journey or departure of a means of transport (generic term).		
C220		<b>MODE OF TRANSPORT</b>	<b>C</b>	<b>R</b>
		Method of transport code or name. Code preferred.		
	8067	<b>Mode of transport, coded</b>	<b>C an..3</b>	<b>R</b>
		Coded method of transport used for the carriage of the goods.		
		UN/ECE Recommendation 19 (2nd edition) - Codes for Modes of Transport (Doc. Ref. TRADE/CEFACT/2001/19).		
	0	Transport mode not specified Transport mode has not been specified.		
		Notes: 1) This code can be used when the mode is not known or when information on it is not available at the time of issuing the document concerned.		
		This mode can only be used when the information provided is provisional at a very early stage of the transport service. If used, it must be corrected later on.		
	1	Maritime		

Transport of goods and/or persons by sea.

If this mode is provided at this point of the message structure, it denotes a transshipment situation.

- 2 Rail  
Transport of goods and/or persons is by rail.
- 3 Road  
Transport of goods and/or persons is by road.
- 4 Air transport  
Transport of goods and/or persons is by air.
- 5 Mail  
Method to convey goods is by mail.

Notes:

1) This code is provided for practical reasons, despite the fact that mail is not genuine mode of transport. In many countries, the value of merchandise exported and imported by mail is considerable, but the exporter or importer concerned would be unable to state by which mode postal items had been conveyed.

- 7 Fixed transport installation  
Transport of item is via a fixed transport installation.

Notes:

1) This code applies to installations for continuous transport such as pipelines, ropeways and electric power lines.

- 8 Inland water transport  
Transport of goods and/or persons is by inland water.

ZZ1  
*Only provided for backward compatibility. It will be treated like '1'.*

ZZ2  
*Only provided for backward compatibility. It will be treated like '3'.*

ZZ3  
*Only provided for backward compatibility. It will be treated like '1'.*

ZZ5  
*Only provided for backward compatibility. It will be treated like '2'.*

ZZ6  
*Only provided for backward compatibility. It will be treated like '0'.*

8066	<b>Mode of transport</b>	<b>C an..17</b>	<b>X</b>
	Method of transport used for the carriage of the goods.		
C228	<b>TRANSPORT MEANS</b>	<b>C</b>	<b>X</b>
	Code and/or name identifying the type of means of transport.		
8179	<b>Type of means of transport identification</b>	<b>C an..8</b>	<b>X</b>
	Code defining the type of the means of transport being utilized.		
8178	<b>Type of means of transport</b>	<b>C an..17</b>	<b>X</b>
	Description of the type of the means of transport being utilized.		
C040	<b>CARRIER</b>	<b>C</b>	<b>X</b>



Common Platform - Manifest Message Format - Version 1.3j2

		Identification of a carrier by code and/or by name. Code preferred.		
	<b>3127</b>	<b>Carrier identification</b>	<b>C an..17</b>	<b>X</b>
		Identification of party undertaking or arranging transport of goods between named points.		
	<b>1131</b>	<b>Code list qualifier</b>	<b>C an..3</b>	<b>X</b>
		Identification of a code list.		
	<b>3055</b>	<b>Code list responsible agency, coded</b>	<b>C an..3</b>	<b>X</b>
		Code identifying the agency responsible for a code list.		
	<b>3128</b>	<b>Carrier name</b>	<b>C an..35</b>	<b>X</b>
		Name of party undertaking or arranging transport of goods between named points.		
<b>8101</b>		<b>TRANSIT DIRECTION, CODED</b>	<b>C an..3</b>	<b>X</b>
		Identification of the point of origin and point of direction.		
<b>C401</b>		<b>EXCESS TRANSPORTATION INFORMATION</b>	<b>C</b>	<b>X</b>
		To provide details of reason for, and responsibility for, use of transportation other than normally utilized.		
	<b>8457</b>	<b>Excess transportation reason, coded</b>	<b>M an..3</b>	<b>X</b>
		Indication of reason for excess transportation.		
	<b>8459</b>	<b>Excess transportation responsibility, coded</b>	<b>M an..3</b>	<b>X</b>
		Indication of responsibility for excess transportation.		
	<b>7130</b>	<b>Customer authorization number</b>	<b>C an..17</b>	<b>X</b>
		Customer provided authorization number to allow supplier to ship goods under specific freight conditions. This number will be transmitted back to customer in the dispatch advice message.		
<b>C222</b>		<b>TRANSPORT IDENTIFICATION</b>	<b>C</b>	<b>X</b>
		Code and/or name identifying the means of transport.		
	<b>8213</b>	<b>Id. of means of transport identification</b>	<b>C an..9</b>	<b>X</b>
		Identification of the means of transport by name or number.		
	<b>1131</b>	<b>Code list qualifier</b>	<b>C an..3</b>	<b>X</b>
		Identification of a code list.		
	<b>3055</b>	<b>Code list responsible agency, coded</b>	<b>C an..3</b>	<b>X</b>
		Code identifying the agency responsible for a code list.		
	<b>8212</b>	<b>Id. of the means of transport</b>	<b>C an..35</b>	<b>X</b>
		Identification of the means of transport by name or number.		
	<b>8453</b>	<b>Nationality of means of transport, coded</b>	<b>C an..3</b>	<b>X</b>
		Coded name of the country in which a means of transport is registered.		
<b>8281</b>		<b>TRANSPORT OWNERSHIP, CODED</b>	<b>C an..3</b>	<b>X</b>
		Code indicating the ownership of the means of transport.		

**Group:** **NAD** Segment Group 34: Name and Address  
**Position:** 1500  
**Group:** Segment Group 19 (Consignment Information) Conditional (Optional)  
**Level:** 2  
**Usage:** Conditional (Required)  
**Max Use:** 9  
**Purpose:** A group of segments to identify a party, related references, locations contacts, required documents, and charges to be paid by the party.  
**Notes:** This group is to refer the several entities related with this transport contract.

The entities included are the ones generally included in the aligned documents according to UN/ECE Recommendation 1. But it was identified the need to specify some of these entities in segment group 42. So, in order to maintain the compatibility between the business documents and this need, these entities can be referred at CNI level and/or at GID level. The following rules apply:

- If they are omitted at CNI level, then the ones referred at GID level will be considered provided that all occurrences of GID group will have these entities, otherwise an error will occur.
- If they are present at CNI level and omitted at GID level, then the ones at CNI level will be applied to GID level during the integration process.
- If they are present at CNI level and present in some (not all) occurrences of GID group, then the ones at CNI level will be applied to the occurrences of the GID group that had no entities associated.
- If they are present at CNI level and in all occurrences of GID group, then the information will be processed as is.

If the manifest type is transit (SG2:GOR:DE8323='3') then code 'NI', 'N1' and 'N2' in DE3035 are not needed.

At least this group must be used once to identify the agent that is presenting the cargo to Customs (DE3035='AG').

This group is also used to state the Customs Office that endorses the exit from the Customs territory. Use code 'CM' in DE3035 for this purpose.

### Segment Summary

	<b>Pos.</b>	<b>Seg.</b>	<b>Name</b>	<b>Req.</b>	<b>Max.</b>	<b>Group:</b>
	<b>No.</b>	<b>ID</b>		<b>Des.</b>	<b>Use</b>	<b>Repeat</b>
M	1510	NAD	Name and Address	M	1	

**Segment:** **NAD** Name and Address  
**Position:** 1510 (Trigger Segment)  
**Group:** SG19-SG34  
**Level:** 2  
**Usage:** Mandatory  
**Max Use:** 1  
**Purpose:** A segment to identify the party's name, address, and function.

**Dependency Notes:**

**Semantic Notes:**

**Comments:**

**Notes:** When referring to a foreign entity then composite C058 and elements 3251 and 3207 must be used. For nationals send the tax payer number in C082:3039.

The usage of qualifiers 'AG', 'CA', 'CN' and 'CZ' is required.

Example: Agent of Cargo, tax payer id 510042365789.

NAD+AG+510042365789:167:155'

**Data Element Summary**

<u>Data Element</u>	<u>Component Element</u>	<u>Name</u>	<u>Base Attributes</u>	<u>User Attributes</u>
3035		<b>PARTY QUALIFIER</b>	<b>M an..3</b>	<b>M</b>
		Code giving specific meaning to a party.		
	AG	Agent/representative (3196) Party authorized to act on behalf of another party. Consider this entity as the Cargo Agent.		
	CA	Carrier (3126) Party undertaking or arranging transport of goods between named points.		
	CM	Customs Identification of customs authority relevant to the transaction or shipment. This qualifier is used to identify the Customs Office that endorses the exit of the goods from Customs territory.		
	CN	Consignee (3132) Party to which goods are consigned. All details about the consignee are classified as sensitive information.		
	CZ	Consignor (3336) Party which, by contract with a carrier, consigns or sends goods with the carrier, or has them conveyed by him. Synonym: shipper, sender. All details about the consignor are classified as sensitive information.		
	N1	Notify party no. 1		

	N2	Notify party no. 2 All details about the notify party are classified as sensitive information.		
	NI	Notify party (3180) Party to be notified of arrival of goods.		
	OS	Original shipper The original supplier of the goods. All details about the original shipper are classified as sensitive information.		
<b>C082</b>	<b>PARTY IDENTIFICATION DETAILS</b>		<b>C</b>	<b>D</b>
		Identification of a transaction party by code. This composite element is required when the entity is Portuguese.		
	<b>3039 Party id. identification</b>		<b>M an..35</b>	<b>M</b>
		Code identifying a party involved in a transaction. Send the tax payer number.		
	<b>1131 Code list qualifier</b>		<b>C an..3</b>	<b>R</b>
		Identification of a code list.		
	113	Customs office Customs administrative unit competent for the performance of Customs formalities, and the premises or other areas approved for the purpose by the competent authorities (CCC).		
	167	Tax party identification Code assigned by a tax authority to identify a party.		
	<b>3055 Code list responsible agency, coded</b>		<b>C an..3</b>	<b>R</b>
		Code identifying the agency responsible for a code list. 155 PT, Portuguese Customs		
<b>C058</b>	<b>NAME AND ADDRESS</b>		<b>C</b>	<b>R</b>
		Unstructured name and address: one to five lines.		
	<b>3124 Name and address line</b>		<b>M an..35</b>	<b>M</b>
		Free form name and address description. Name of the entity. Exception. If DE:3035='CM' then provide the name of the Customs Office that endorses the exit of the goods from the EU territory.		
	<b>3124 Name and address line</b>		<b>C an..35</b>	<b>O</b>
		Free form name and address description. Name of the entity.		
	<b>3124 Name and address line</b>		<b>C an..35</b>	<b>R</b>
		Free form name and address description. Address of the entity.		
	<b>3124 Name and address line</b>		<b>C an..35</b>	<b>O</b>
		Free form name and address description. Address of the entity.		

Common Platform - Manifest Message Format - Version 1.3j2

	<b>3124</b>	<b>Name and address line</b>	<b>C</b>	<b>an..35</b>	<b>O</b>
		Free form name and address description.			
		Place other than a city.			
<b>C080</b>		<b>PARTY NAME</b>	<b>C</b>		<b>X</b>
		Identification of a transaction party by name, one to five lines. Party name may be formatted.			
	<b>3036</b>	<b>Party name</b>	<b>M</b>	<b>an..35</b>	<b>X</b>
		Name of a party involved in a transaction.			
	<b>3036</b>	<b>Party name</b>	<b>C</b>	<b>an..35</b>	<b>X</b>
		Name of a party involved in a transaction.			
	<b>3036</b>	<b>Party name</b>	<b>C</b>	<b>an..35</b>	<b>X</b>
		Name of a party involved in a transaction.			
	<b>3036</b>	<b>Party name</b>	<b>C</b>	<b>an..35</b>	<b>X</b>
		Name of a party involved in a transaction.			
	<b>3036</b>	<b>Party name</b>	<b>C</b>	<b>an..35</b>	<b>X</b>
		Name of a party involved in a transaction.			
	<b>3045</b>	<b>Party name format, coded</b>	<b>C</b>	<b>an..3</b>	<b>X</b>
		Specification of the representation of a party name.			
<b>C059</b>		<b>STREET</b>	<b>C</b>		<b>X</b>
		Street address and/or PO Box number in a structured address: one to three lines.			
	<b>3042</b>	<b>Street and number/p.o. box</b>	<b>M</b>	<b>an..35</b>	<b>X</b>
		Street and number in plain language, or Post Office Box No.			
	<b>3042</b>	<b>Street and number/p.o. box</b>	<b>C</b>	<b>an..35</b>	<b>X</b>
		Street and number in plain language, or Post Office Box No.			
	<b>3042</b>	<b>Street and number/p.o. box</b>	<b>C</b>	<b>an..35</b>	<b>X</b>
		Street and number in plain language, or Post Office Box No.			
	<b>3042</b>	<b>Street and number/p.o. box</b>	<b>C</b>	<b>an..35</b>	<b>X</b>
		Street and number in plain language, or Post Office Box No.			
<b>3164</b>		<b>CITY NAME</b>	<b>C</b>	<b>an..35</b>	<b>R</b>
		Name of a city (a town, a village) for addressing purposes.			
<b>3229</b>		<b>COUNTRY SUB-ENTITY IDENTIFICATION</b>	<b>C</b>	<b>an..9</b>	<b>O</b>
		Identification of the name of sub-entities (state, province) defined by appropriate governmental agencies.			
		ISO 3166-2 with 1-3 characters country subdivision codes.			
<b>3251</b>		<b>POSTCODE IDENTIFICATION</b>	<b>C</b>	<b>an..9</b>	<b>D</b>
		Code defining postal zones or addresses.			
		This data element is advised when the country has postal coding system.			
		It is required for Portugal.			
<b>3207</b>		<b>COUNTRY, CODED</b>	<b>C</b>	<b>an..3</b>	<b>R</b>
		Identification of the name of a country or other geographical entity as specified in			

ISO 3166.

ISO 3166 2-letter country codes.

**Group:** **GID** Segment Group 41: Goods Item Details  
**Position:** 1820  
**Group:** Segment Group 19 (Consignment Information) Conditional (Optional)  
**Level:** 2  
**Usage:** Conditional (Dependent)  
**Max Use:** 999  
**Purpose:** A group of segments to describe the goods items for which transport is undertaken.  
**Notes:** This is a conditional group and can be repeated 999 times. Each instance describes a cargo departure, goods, passengers, etc.

For the Port of Leixões and the Port of Sines, and if the transport document refers only to empty transport equipment then this group is not needed.

For the Port of Lisbon this group is needed always. There must be one occurrence for each type of containers according with the codes presented in segment GDS.

### Segment Summary

	<u>Pos. No.</u>	<u>Seg. ID</u>	<u>Name</u>	<u>Req. Des.</u>	<u>Max. Use</u>	<u>Group: Repeat</u>
M	1830	GID	Goods Item Details	M	1	
D	1880	LOC	Place/Location Identification	C	2	
O	1890	MOA	Monetary Amount	C	1	
O	1900	PIA	Additional Product Id	C	1	
R	1920	FTX	Free Text	C	5	
	1930		Segment Group 42: Name and Address	C		9
R	1960	GDS	Nature of Cargo	C	2	
	1970		Segment Group 43: Measurements	C		2
	2030		Segment Group 45: Reference	C		9
	2060		Segment Group 46: Package Identification	C		999
	2140		Segment Group 48: Governmental Requirements	C		9
	2280		Segment Group 52: Split Goods Placement	C		999

**Segment:** **GID** Goods Item Details  
**Position:** 1830 (Trigger Segment)  
**Group:** SG19-SG41  
**Level:** 2  
**Usage:** Mandatory  
**Max Use:** 1  
**Purpose:** A segment to identify a goods item for which transport is undertaken. A goods item can be identified by up to three levels of packaging.

**Dependency Notes:**

**Semantic Notes:**

**Comments:**

**Notes:** Example: 20 Boxes of carton, being the third goods in the consignment.

GID+3+20:CT:67:6'

**Data Element Summary**

<u>Data Element</u>	<u>Component Element</u>	<u>Name</u>	<u>Base Attributes</u>	<u>User Attributes</u>
1496		<b>GOODS ITEM NUMBER</b>	<b>C n..5</b>	<b>R</b>
		Serial number differentiating each separate goods item entry of a consignment as contained in one document/declaration. Must be unique in each consignment.		
C213		<b>NUMBER AND TYPE OF PACKAGES</b>	<b>C</b>	<b>D</b>
		Number and type of individual parts of a shipment. This composite is not needed when the case of empty transport equipment.		
	7224	<b>Number of packages</b>	<b>C n..8</b>	<b>R</b>
		Number of individual parts of a shipment either unpacked, or packed in such a way that they cannot be divided without first undoing the packing. Note that for break-bulk it must be declared 1 volume. Only for the Port of Lisbon, in the presence of empty containers this element must have the quantity of empty containers.		
	7065	<b>Type of packages identification</b>	<b>C an..17</b>	<b>R</b>
		Coded description of the form in which goods are presented. UN/ECE Recommendation 21 - Codes for Types of Cargo, Packages and Packaging Materials Revision 4 to Annex V and Annex VI (Doc. Ref. TRADE/CEFACT/2002/). Only for the Port of Lisbon, in the presence of empty containers this element must have code NE.		
	1131	<b>Code list qualifier</b>	<b>C an..3</b>	<b>R</b>
		Identification of a code list. 67 Type of package Indication of the type of package codes.		
	3055	<b>Code list responsible agency, coded</b>	<b>C an..3</b>	<b>R</b>
		Code identifying the agency responsible for a code list.		



		6	UN/ECE (United Nations - Economic Commission for Europe)	
	<b>7064</b>	<b>Type of packages</b>	<b>C an..35</b>	<b>O</b>
		Description of the form in which goods are presented.		
		Annex II - Eurostat Directive. Do not use codes Directive 10,20,30,50,60 and 90 as they are Classification Groups.		
		<i>Only provided for backward compatibility. Information will be treated like the segment GDS in this group.</i>		
	<b>7233</b>	<b>Packaging related information, coded</b>	<b>C an..3</b>	<b>X</b>
		Code giving packaging, handling and marking related information.		
<b>C213</b>		<b>NUMBER AND TYPE OF PACKAGES</b>	<b>C</b>	<b>X</b>
		Number and type of individual parts of a shipment.		
	<b>7224</b>	<b>Number of packages</b>	<b>C n..8</b>	<b>X</b>
		Number of individual parts of a shipment either unpacked, or packed in such a way that they cannot be divided without first undoing the packing.		
	<b>7065</b>	<b>Type of packages identification</b>	<b>C an..17</b>	<b>X</b>
		Coded description of the form in which goods are presented.		
	<b>1131</b>	<b>Code list qualifier</b>	<b>C an..3</b>	<b>X</b>
		Identification of a code list.		
	<b>3055</b>	<b>Code list responsible agency, coded</b>	<b>C an..3</b>	<b>X</b>
		Code identifying the agency responsible for a code list.		
	<b>7064</b>	<b>Type of packages</b>	<b>C an..35</b>	<b>X</b>
		Description of the form in which goods are presented.		
	<b>7233</b>	<b>Packaging related information, coded</b>	<b>C an..3</b>	<b>X</b>
		Code giving packaging, handling and marking related information.		
<b>C213</b>		<b>NUMBER AND TYPE OF PACKAGES</b>	<b>C</b>	<b>X</b>
		Number and type of individual parts of a shipment.		
	<b>7224</b>	<b>Number of packages</b>	<b>C n..8</b>	<b>X</b>
		Number of individual parts of a shipment either unpacked, or packed in such a way that they cannot be divided without first undoing the packing.		
	<b>7065</b>	<b>Type of packages identification</b>	<b>C an..17</b>	<b>X</b>
		Coded description of the form in which goods are presented.		
	<b>1131</b>	<b>Code list qualifier</b>	<b>C an..3</b>	<b>X</b>
		Identification of a code list.		
	<b>3055</b>	<b>Code list responsible agency, coded</b>	<b>C an..3</b>	<b>X</b>
		Code identifying the agency responsible for a code list.		
	<b>7064</b>	<b>Type of packages</b>	<b>C an..35</b>	<b>X</b>
		Description of the form in which goods are presented.		
	<b>7233</b>	<b>Packaging related information, coded</b>	<b>C an..3</b>	<b>X</b>
		Code giving packaging, handling and marking related information.		
<b>C213</b>		<b>NUMBER AND TYPE OF PACKAGES</b>	<b>C</b>	<b>X</b>
		Number and type of individual parts of a shipment.		

Common Platform - Manifest Message Format - Version 1.3j2

	<b>7224</b>	<b>Number of packages</b>	<b>C</b>	<b>n..8</b>	<b>X</b>
		Number of individual parts of a shipment either unpacked, or packed in such a way that they cannot be divided without first undoing the packing.			
	<b>7065</b>	<b>Type of packages identification</b>	<b>C</b>	<b>an..17</b>	<b>X</b>
		Coded description of the form in which goods are presented.			
	<b>1131</b>	<b>Code list qualifier</b>	<b>C</b>	<b>an..3</b>	<b>X</b>
		Identification of a code list.			
	<b>3055</b>	<b>Code list responsible agency, coded</b>	<b>C</b>	<b>an..3</b>	<b>X</b>
		Code identifying the agency responsible for a code list.			
	<b>7064</b>	<b>Type of packages</b>	<b>C</b>	<b>an..35</b>	<b>X</b>
		Description of the form in which goods are presented.			
	<b>7233</b>	<b>Packaging related information, coded</b>	<b>C</b>	<b>an..3</b>	<b>X</b>
		Code giving packaging, handling and marking related information.			
<b>C213</b>		<b>NUMBER AND TYPE OF PACKAGES</b>	<b>C</b>		<b>X</b>
		Number and type of individual parts of a shipment.			
	<b>7224</b>	<b>Number of packages</b>	<b>C</b>	<b>n..8</b>	<b>X</b>
		Number of individual parts of a shipment either unpacked, or packed in such a way that they cannot be divided without first undoing the packing.			
	<b>7065</b>	<b>Type of packages identification</b>	<b>C</b>	<b>an..17</b>	<b>X</b>
		Coded description of the form in which goods are presented.			
	<b>1131</b>	<b>Code list qualifier</b>	<b>C</b>	<b>an..3</b>	<b>X</b>
		Identification of a code list.			
	<b>3055</b>	<b>Code list responsible agency, coded</b>	<b>C</b>	<b>an..3</b>	<b>X</b>
		Code identifying the agency responsible for a code list.			
	<b>7064</b>	<b>Type of packages</b>	<b>C</b>	<b>an..35</b>	<b>X</b>
		Description of the form in which goods are presented.			
	<b>7233</b>	<b>Packaging related information, coded</b>	<b>C</b>	<b>an..3</b>	<b>X</b>
		Code giving packaging, handling and marking related information.			

**Segment:** **LOC** Place/Location Identification  
**Position:** 1880  
**Group:** SG19-SG41  
**Level:** 3  
**Usage:** Conditional (Dependent)  
**Max Use:** 2  
**Purpose:** A segment to specify a country associated with a goods item, such as country of origin, or country of destination.

**Dependency Notes:**

**Semantic Notes:**

**Comments:**

**Notes:**

This segment has two usages.

One is to state the first port of load of goods into a vessel in case of an import situation. For this case, use 3227='76'.

The other is to state the intended terminal/berth/location where the goods will be loaded/discharged to/from the vessel, except if it is a transit manifest (SG2:GOR:DE8323='3'). In this situation this usage does not apply. This segment applies only to the Port of Lisbon and to the Port of Sines. Both the Port Authority in Lisbon and the Port Authority in Sines will provide their respective berths code list.

Example: Cargo movement from/to the vessel at berth 007 in the Port of Lisbon  
 LOC+164+PTLIS:139:6+007'

Example: Original port of loading Shangai  
 LOC+76+CNSHA:139:6'

**Data Element Summary**

<u>Data Element</u>	<u>Component Element</u>	<u>Name</u>	<u>Base Attributes</u>	<u>User Attributes</u>
3227		<b>PLACE/LOCATION QUALIFIER</b>	<b>M an..3</b>	<b>M</b>
		Code identifying the function of a location.		
		76 Original port of loading		
		The port where the goods were first loaded on a vessel.		
		164 Berth		
		Place or location in a port where a vessel is moored.		
C517		<b>LOCATION IDENTIFICATION</b>	<b>C</b>	<b>R</b>
		Identification of a location by code or name.		
	3225	<b>Place/location identification</b>	<b>C an..25</b>	<b>R</b>
		Identification of the name of place/location, other than 3164 City name.		
		If 3227 is '164' then put the port id where the berth stated in 3223 is located.		
	1131	<b>Code list qualifier</b>	<b>C an..3</b>	<b>R</b>
		Identification of a code list.		

	139	Port			
		A location having facilities for means of transport to load or discharge cargo.			
	<b>3055</b>	<b>Code list responsible agency, coded</b>	<b>C</b>	<b>an..3</b>	<b>R</b>
		Code identifying the agency responsible for a code list.			
	6	UN/ECE (United Nations - Economic Commission for Europe)			
	<b>3224</b>	<b>Place/location</b>	<b>C</b>	<b>an..70</b>	<b>X</b>
		Name of place/location, other than 3164 City name.			
<b>C519</b>		<b>RELATED LOCATION ONE IDENTIFICATION</b>	<b>C</b>		<b>D</b>
		Identification the first related location by code or name.			
		Use if DE:3227 is '164'.			
	<b>3223</b>	<b>Related place/location one identification</b>	<b>C</b>	<b>an..25</b>	<b>R</b>
		Specification of the first related place/location by code.			
		List to be provided by the Port Authority receiver of the message.			
	<b>1131</b>	<b>Code list qualifier</b>	<b>C</b>	<b>an..3</b>	<b>X</b>
		Identification of a code list.			
	<b>3055</b>	<b>Code list responsible agency, coded</b>	<b>C</b>	<b>an..3</b>	<b>X</b>
		Code identifying the agency responsible for a code list.			
	<b>3222</b>	<b>Related place/location one</b>	<b>C</b>	<b>an..70</b>	<b>X</b>
		Specification of the first related place/location by name.			
<b>C553</b>		<b>RELATED LOCATION TWO IDENTIFICATION</b>	<b>C</b>		<b>X</b>
		Identification of second related location by code or name.			
	<b>3233</b>	<b>Related place/location two identification</b>	<b>C</b>	<b>an..25</b>	<b>X</b>
		Specification of a second related place/location by code.			
	<b>1131</b>	<b>Code list qualifier</b>	<b>C</b>	<b>an..3</b>	<b>X</b>
		Identification of a code list.			
	<b>3055</b>	<b>Code list responsible agency, coded</b>	<b>C</b>	<b>an..3</b>	<b>X</b>
		Code identifying the agency responsible for a code list.			
	<b>3232</b>	<b>Related place/location two</b>	<b>C</b>	<b>an..70</b>	<b>X</b>
		Specification of a second related place/location by name.			
<b>5479</b>		<b>RELATION, CODED</b>	<b>C</b>	<b>an..3</b>	<b>X</b>
		To specify the relationship between two or more items.			

**Segment:** **MOA** **Monetary Amount**  
**Position:** 1890  
**Group:** SG19-SG41  
**Level:** 3  
**Usage:** Conditional (Optional)  
**Max Use:** 1  
**Purpose:** A segment to specify a monetary amount associated with a goods item, such as declared value, FOB value, etc.

**Dependency Notes:**

**Semantic Notes:**

**Comments:**

**Notes:** Example: Total amount € 5.587,00.

MOA+39:558700:EUR'

**Data Element Summary**

<u>Data Element</u>	<u>Component Element</u>	<u>Name</u>	<u>Base Attributes</u>	<u>User Attributes</u>
C516		<b>MONETARY AMOUNT</b> Amount of goods or services stated as a monetary amount in a specified currency.	<b>M</b>	<b>M</b>
	<b>5025</b>	<b>Monetary amount type qualifier</b> Indication of type of amount. 39 Invoice total amount [5444] Total sum charged in respect of one or more Invoices in accordance with the terms of delivery.	<b>M an..3</b>	<b>M</b>
	<b>5004</b>	<b>Monetary amount</b> Number of monetary units.	<b>C n..18</b>	<b>O</b>
	<b>6345</b>	<b>Currency, coded</b> Identification of the name or symbol of the monetary unit involved in the transaction. EUR Euro	<b>C an..3</b>	<b>O</b>
	<b>6343</b>	<b>Currency qualifier</b> Code giving specific meaning to data element 6345 Currency.	<b>C an..3</b>	<b>X</b>
	<b>4405</b>	<b>Status, coded</b> Provides information regarding a status.	<b>C an..3</b>	<b>X</b>

**Segment:** **PIA Additional Product Id**  
**Position:** 1900  
**Group:** SG19-SG41  
**Level:** 3  
**Usage:** Conditional (Optional)  
**Max Use:** 1  
**Purpose:** A segment to specify article numbers.  
**Dependency Notes:**  
**Semantic Notes:**  
**Comments:**

**Notes:** This segment is required for the Port of Sines and for the Port of Lisbon (except for transit manifest, see below). In this case use the 8 digit format with 4 significant digits (means that at least the first 4 must be given and the others will be zero). But for some goods (to be specified by the Port of Lisbon) 6 or 8 significant digits must be given.

The usage of 14 digits in the HS code is advised since in the future some customs procedures may be simplified if this information is provided.

If the consignment is related with empty containers, two situations may apply.

1. The containers are being considered just equipment being moved for positioning purposes, then element 7140 must have the value "8609000000" and the type of document in group 26:RFF:1153='AEW'. This applies to the Port of Lisbon and Port of Sines only.

2. The containers were object of a commercial transaction (example, they were sold by a container maker). In this case they are considered to be goods items. Then element 7140 must have values "8609000000" and in GDS:7085 must have a value in ('31','32','33','34').

If the manifest type is transit (SG2:GOR:DE8323='3') then this segment is optional for all port authorities.

Note that these data are not binding for Customs' purposes.

Example: HS 63.02, Towels

PIA+5+63020000:HS'

#### Data Element Summary

<u>Data Element</u>	<u>Component Element</u>	<u>Name</u>	<u>Base Attributes</u>	<u>User Attributes</u>
4347		<b>PRODUCT ID. FUNCTION QUALIFIER</b> Indication of the function of the product code.	<b>M an..3</b>	<b>M</b>
	5	Product identification		
C212		<b>ITEM NUMBER IDENTIFICATION</b> Goods identification for a specified source.	<b>M</b>	<b>M</b>
	7140	<b>Item number</b>	<b>C an..35</b>	<b>R</b>

		A number allocated to a group or item.			
		Harmonized system code: 4 digits minimum, 14 for non-EU goods.			
	<b>7143</b>	<b>Item number type, coded</b>	<b>C</b>	<b>an..3</b>	<b>R</b>
		Identification of the type of item number.			
		HS Harmonised system			
	<b>1131</b>	<b>Code list qualifier</b>	<b>C</b>	<b>an..3</b>	<b>X</b>
		Identification of a code list.			
	<b>3055</b>	<b>Code list responsible agency, coded</b>	<b>C</b>	<b>an..3</b>	<b>X</b>
		Code identifying the agency responsible for a code list.			
<b>C212</b>		<b>ITEM NUMBER IDENTIFICATION</b>	<b>C</b>		<b>X</b>
		Goods identification for a specified source.			
	<b>7140</b>	<b>Item number</b>	<b>C</b>	<b>an..35</b>	<b>X</b>
		A number allocated to a group or item.			
	<b>7143</b>	<b>Item number type, coded</b>	<b>C</b>	<b>an..3</b>	<b>X</b>
		Identification of the type of item number.			
	<b>1131</b>	<b>Code list qualifier</b>	<b>C</b>	<b>an..3</b>	<b>X</b>
		Identification of a code list.			
	<b>3055</b>	<b>Code list responsible agency, coded</b>	<b>C</b>	<b>an..3</b>	<b>X</b>
		Code identifying the agency responsible for a code list.			
<b>C212</b>		<b>ITEM NUMBER IDENTIFICATION</b>	<b>C</b>		<b>X</b>
		Goods identification for a specified source.			
	<b>7140</b>	<b>Item number</b>	<b>C</b>	<b>an..35</b>	<b>X</b>
		A number allocated to a group or item.			
	<b>7143</b>	<b>Item number type, coded</b>	<b>C</b>	<b>an..3</b>	<b>X</b>
		Identification of the type of item number.			
	<b>1131</b>	<b>Code list qualifier</b>	<b>C</b>	<b>an..3</b>	<b>X</b>
		Identification of a code list.			
	<b>3055</b>	<b>Code list responsible agency, coded</b>	<b>C</b>	<b>an..3</b>	<b>X</b>
		Code identifying the agency responsible for a code list.			
<b>C212</b>		<b>ITEM NUMBER IDENTIFICATION</b>	<b>C</b>		<b>X</b>
		Goods identification for a specified source.			
	<b>7140</b>	<b>Item number</b>	<b>C</b>	<b>an..35</b>	<b>X</b>
		A number allocated to a group or item.			
	<b>7143</b>	<b>Item number type, coded</b>	<b>C</b>	<b>an..3</b>	<b>X</b>
		Identification of the type of item number.			
	<b>1131</b>	<b>Code list qualifier</b>	<b>C</b>	<b>an..3</b>	<b>X</b>
		Identification of a code list.			
	<b>3055</b>	<b>Code list responsible agency, coded</b>	<b>C</b>	<b>an..3</b>	<b>X</b>
		Code identifying the agency responsible for a code list.			
<b>C212</b>		<b>ITEM NUMBER IDENTIFICATION</b>	<b>C</b>		<b>X</b>

Common Platform - Manifest Message Format - Version 1.3j2

	Goods identification for a specified source.			
<b>7140</b>	<b>Item number</b>	<b>C</b>	<b>an..35</b>	<b>X</b>
	A number allocated to a group or item.			
<b>7143</b>	<b>Item number type, coded</b>	<b>C</b>	<b>an..3</b>	<b>X</b>
	Identification of the type of item number.			
<b>1131</b>	<b>Code list qualifier</b>	<b>C</b>	<b>an..3</b>	<b>X</b>
	Identification of a code list.			
<b>3055</b>	<b>Code list responsible agency, coded</b>	<b>C</b>	<b>an..3</b>	<b>X</b>
	Code identifying the agency responsible for a code list.			



**Segment:** **FTX** Free Text  
**Position:** 1920  
**Group:** SG19-SG41  
**Level:** 3  
**Usage:** Conditional (Required)  
**Max Use:** 5  
**Purpose:** A segment to specify processable supplementary information relating to the goods item.

**Dependency Notes:**

**Semantic Notes:**

**Comments:**

**Notes:** Goods description must be sent (FTX:4451='AAA'). In this case, the goods description must be in portuguese and/or in english. So two occurrences of FTX with DE:4451 equal to 'AAA' may appear.

If the goods benefit from aid under the procedure of supplying the national islands, this fact can be stated in this segment (with FTX:4451='AAI'). In this case element 4440 in C108 shall have the expression "POSEIMA". This usage applies if it is a disembark manifest (SG2:GOR:8323=2) to deliver to a port at the Azores or Madeira archipelagos.

Everytime the goods in this segment group are declared in an export customs declaration, it must be stated if they are the total, just a part or the rest of what is referenced on that declaration. This fact is stated in this segment with 4451='CUS', and element C108:4440 shall be used for this purpose with code 'T' for total, 'P' for part and 'R' for rest. This information applies when this message is an export document (SG2:GOR:8323='1') and goods are being exported (according with customs definition) or goods in transhipment with an export MRN (Movement Reference Number).

It is necessary to segregate the situation when goods of the type vehicles carry other goods inside. Both the vehicle and other goods are considered as one item, so GID occurs only once. Vehicle must be declared according to their specific rules (see Notes of segment group 46), but additionally segment must be sent with code 'TRA' in DE:4451. The elements 4440 can be used to provide complementary information like which vehicle is carrying which goods or which quantities.

All these rules do no apply in the case of empty transport equipment.

Example: Goods description: PVC bags for packaging purpose, in english.

FTX+AAA+++PVC BAGS FOR PACKAGING PURPOSE+EN'

Example: Goods to supply the islands.

FTX+AAI+++POSEIMA'

**Data Element Summary**

<u>Data Element</u>	<u>Component Element Name</u>	<u>Base Attributes</u>	<u>User Attributes</u>
---------------------	-------------------------------	------------------------	------------------------

<b>4451</b>	<b>TEXT SUBJECT QUALIFIER</b>	<b>M an..3</b>	<b>M</b>
	Code specifying subject of a free text.		
	AAA Goods description [7002] Plain language description of the nature of the goods sufficient to identify them at the level required for banking, Customs, statistical or transport purposes, avoiding unnecessary detail (Generic term). This code must be used at least once for Customs purposes.		
	AAI General information Use to inform if the goods benefit from special aid under the procedure of supply of the national islands.		
	CUS Customs declaration information Note contains customs declaration information. This qualifier is to state if the goods item corresponds to the total, to a part or to the rest of the cargo declared in a certain customs document.		
	TRA Transportation information General information regarding the transport of the cargo. Use this code when the declared vehicle are carrying other goods inside. The simple usage of the code is enough to state this scenario but it is advised to send complementary information in DE:4440.		
<b>4453</b>	<b>TEXT FUNCTION, CODED</b>	<b>C an..3</b>	<b>X</b>
	Code specifying how to handle the text.		
<b>C107</b>	<b>TEXT REFERENCE</b>	<b>C</b>	<b>X</b>
	Coded reference to a standard text and its source.		
<b>4441</b>	<b>Free text identification</b>	<b>M an..17</b>	<b>X</b>
	Free text in coded form.		
<b>1131</b>	<b>Code list qualifier</b>	<b>C an..3</b>	<b>X</b>
	Identification of a code list.		
<b>3055</b>	<b>Code list responsible agency, coded</b>	<b>C an..3</b>	<b>X</b>
	Code identifying the agency responsible for a code list.		
<b>C108</b>	<b>TEXT LITERAL</b>	<b>C</b>	<b>R</b>
	Free text; one to five lines.		
<b>4440</b>	<b>Free text</b>	<b>M an..70</b>	<b>M</b>
	Free text field available to the message sender for information. If element 4451 is 'AAI', state the condition defined for this code by placing the term "POSEIMA". If element 4451 is 'CUS', then provide the information by using the codes 'T' for total, 'P' for part or 'R' for rest as appropriate.		
<b>4440</b>	<b>Free text</b>	<b>C an..70</b>	<b>R</b>
	Free text field available to the message sender for information.		
<b>4440</b>	<b>Free text</b>	<b>C an..70</b>	<b>O</b>

Common Platform - Manifest Message Format - Version 1.3j2

		Free text field available to the message sender for information.		
<b>4440</b>	<b>Free text</b>		<b>C an..70</b>	<b>O</b>
		Free text field available to the message sender for information.		
<b>4440</b>	<b>Free text</b>		<b>C an..70</b>	<b>O</b>
		Free text field available to the message sender for information.		
<b>3453</b>	<b>LANGUAGE, CODED</b>		<b>C an..3</b>	<b>O</b>
		Code of language (ISO 639-1988).		
		According to ISO 639:1988 two-letter code.		
	EN	English		
	PT	Portuguese		

**Group:** **NAD** Segment Group 42: Name and Address

**Position:** 1930

**Group:** Segment Group 41 (Goods Item Details) Conditional (Dependent)

**Level:** 3

**Usage:** Conditional (Required)

**Max Use:** 9

**Purpose:** A group of segments to identify different places of collection and/or delivery for the goods item.

**Notes:** This group is to refer the several entities related with this transport contract and to entities related with a particular specific good.

At least the following entities must be specified:

- Consignor/Shipper (CZ). All details about the consignor are classified as sensitive information.
- Notify Party, except if the manifest type is transit (SG2:GOR:8323='3'). All details about notify party are classified as sensitive information.
- Original Shipper (OS). All details about original shipper are classified as sensitive information.
- Exporter (EX) in case of export movement / Importer (IM) in case of import movement. All details about exporter are classified as sensitive information.
- Terminal Operator (TR) only for the Port of Lisbon and Port of Sines
- Warehouse Depositor (WD)
- Warehouse Keeper (WH) only for the Port of Lisbon and the Port of Sines

Refer to the notes of segment group 34 for additional issues about this group.

#### Segment Summary

	<b>Pos.</b>	<b>Seg.</b>	<b>Name</b>	<b>Req.</b>	<b>Max.</b>	<b>Group:</b>
	<b><u>No.</u></b>	<b><u>ID</u></b>	<b><u>Name</u></b>	<b><u>Des.</u></b>	<b><u>Use</u></b>	<b><u>Repeat</u></b>
M	1940	NAD	Name and Address	M	1	

**Segment:** **NAD** Name and Address  
**Position:** 1940 (Trigger Segment)  
**Group:** SG19-SG41-SG42  
**Level:** 3  
**Usage:** Mandatory  
**Max Use:** 1  
**Purpose:** A segment to specify an address of a place of collection or delivery for a goods item.

**Dependency Notes:**

**Semantic Notes:**

**Comments:**

**Notes:**

When referring to a foreign entity then composite C058 an elements 3251 and 3207 must be used. For nationals send the tax payer number in C082:3039.

Information for terminal operator on the sea-side (NAD:3035 is 'TR') and on the land-side (NAD:3035 is 'WH') are required for the Port of Lisbon and the Port of Sines only, except when the manifest type is transit (SG2:GOR:DE8323='3').

Information about the warehouse depositor (NAD:3035 is 'WD') is required after Customs vessel call Id is activated, except when the manifest type is transit (SG2:GOR:DE8323='3').

If some document is specified in SG49:DOC then the issuer of that document must be given. In this case NAD:3035 shall be 'MS'. In this situation the entity must be identified by its name in the elements of composite C058.

The usage of qualifiers 'AG', 'CA', 'CN' and 'CZ' is required.

Example: Warehouse depositor tax payer number 501566198.

NAD+WD+501566198:167:155'

**Data Element Summary**

<u>Data Element</u>	<u>Component Element</u>	<u>Name</u>	<u>Base Attributes</u>	<u>User Attributes</u>
3035		<b>PARTY QUALIFIER</b>	<b>M an..3</b>	<b>M</b>
		Code giving specific meaning to a party.		
	CA	Carrier (3126) Party undertaking or arranging transport of goods between named points.		
	CN	Consignee (3132) Party to which goods are consigned.		
		All details about consignor are classified as sensitive information.		
	CZ	Consignor (3336) Party which, by contract with a carrier, consigns or sends goods with the carrier, or has them conveyed by him. Synonym: shipper, sender.		

		All details about consignor are classified as sensitive information.
EX	Exporter	(3030) Party who makes - or on whose behalf a Customs clearing agent or other authorized person makes - an export declaration. This may include a manufacturer, seller or other person. Within a Customs union, consignor may have the same meaning as exporter.
		All details about exporter are classified as sensitive information.
IM	Importer	(3020) Party who makes - or on whose behalf a Customs clearing agent or other authorized person makes - an import declaration. This may include a person who has possession of the goods or to whom the goods are consigned.
		All details about importer are classified as sensitive information.
MS	Document/message issuer/sender	Issuer of a document and/or sender of a message.
		In this segment group, this code qualifier must be interpreted as Document Issuer. This document is referred in the segment group 49 (DOC) included in segment group 48 (GOR).
N1	Notify party no. 1	
N2	Notify party no. 2	
		All details about notify party are classified as sensitive information.
NI	Notify party	(3180) Party to be notified of arrival of goods.
OS	Original shipper	The original supplier of the goods.
		All details about original shipper are classified as sensitive information.
TR	Terminal operator	A party which handles the loading and unloading of marine vessels.
WD	Warehouse depositor	(3004) Party depositing goods in a warehouse.
		For the purposes of this context, this entity is responsible before Customs of the goods placed under its supervision.
WH	Warehouse keeper	(3022) Party taking responsibility for goods entered into a warehouse.
		This entity is responsible for the reception, keeping and delivery of the goods by landside in a terminal.
ZOP		<i>Only provided for backward compatibility. It will be treated like the location</i>

*provided in the LOC segment in segment group 41.*

<b>C082</b>	<b>PARTY IDENTIFICATION DETAILS</b>	<b>C</b>	<b>D</b>
	Identification of a transaction party by code.		
	This composite element is required when the entity is Portuguese.		
<b>3039</b>	<b>Party id. identification</b>	<b>M an..35</b>	<b>M</b>
	Code identifying a party involved in a transaction.		
<b>1131</b>	<b>Code list qualifier</b>	<b>C an..3</b>	<b>R</b>
	Identification of a code list.		
	167	Tax party identification	
		Code assigned by a tax authority to identify a party.	
	Z01	Authorized entity identification	
		Self explanatory.	
		Use this qualifier when the identification in 3039 is related with an Authorized entity (Importer/Exporter).	
<b>3055</b>	<b>Code list responsible agency, coded</b>	<b>C an..3</b>	<b>R</b>
	Code identifying the agency responsible for a code list.		
	155	PT, Portuguese Customs	
<b>C058</b>	<b>NAME AND ADDRESS</b>	<b>C</b>	<b>R</b>
	Unstructured name and address: one to five lines.		
	<i>Only provided for backward compatibility when NAD:3035 is 'TR'. Any information will be treated like in the LOC segment.</i>		
<b>3124</b>	<b>Name and address line</b>	<b>M an..35</b>	<b>M</b>
	Free form name and address description.		
	Name of the entity.		
<b>3124</b>	<b>Name and address line</b>	<b>C an..35</b>	<b>O</b>
	Free form name and address description.		
	Name of the entity.		
<b>3124</b>	<b>Name and address line</b>	<b>C an..35</b>	<b>R</b>
	Free form name and address description.		
	Address of the entity.		
<b>3124</b>	<b>Name and address line</b>	<b>C an..35</b>	<b>O</b>
	Free form name and address description.		
	Address of the entity.		
<b>3124</b>	<b>Name and address line</b>	<b>C an..35</b>	<b>O</b>
	Free form name and address description.		
	Place other than the a city.		
<b>C080</b>	<b>PARTY NAME</b>	<b>C</b>	<b>X</b>
	Identification of a transaction party by name, one to five lines. Party name may be formatted.		
<b>3036</b>	<b>Party name</b>	<b>M an..35</b>	<b>X</b>
	Name of a party involved in a transaction.		
<b>3036</b>	<b>Party name</b>	<b>C an..35</b>	<b>X</b>

Common Platform - Manifest Message Format - Version 1.3j2

	Name of a party involved in a transaction.			
<b>3036</b>	<b>Party name</b>	<b>C</b>	<b>an..35</b>	<b>X</b>
	Name of a party involved in a transaction.			
<b>3036</b>	<b>Party name</b>	<b>C</b>	<b>an..35</b>	<b>X</b>
	Name of a party involved in a transaction.			
<b>3036</b>	<b>Party name</b>	<b>C</b>	<b>an..35</b>	<b>X</b>
	Name of a party involved in a transaction.			
<b>3045</b>	<b>Party name format, coded</b>	<b>C</b>	<b>an..3</b>	<b>X</b>
	Specification of the representation of a party name.			
<b>C059</b>	<b>STREET</b>	<b>C</b>		<b>X</b>
	Street address and/or PO Box number in a structured address: one to three lines.			
<b>3042</b>	<b>Street and number/p.o. box</b>	<b>M</b>	<b>an..35</b>	<b>X</b>
	Street and number in plain language, or Post Office Box No.			
<b>3042</b>	<b>Street and number/p.o. box</b>	<b>C</b>	<b>an..35</b>	<b>X</b>
	Street and number in plain language, or Post Office Box No.			
<b>3042</b>	<b>Street and number/p.o. box</b>	<b>C</b>	<b>an..35</b>	<b>X</b>
	Street and number in plain language, or Post Office Box No.			
<b>3042</b>	<b>Street and number/p.o. box</b>	<b>C</b>	<b>an..35</b>	<b>X</b>
	Street and number in plain language, or Post Office Box No.			
<b>3164</b>	<b>CITY NAME</b>	<b>C</b>	<b>an..35</b>	<b>R</b>
	Name of a city (a town, a village) for addressing purposes.			
<b>3229</b>	<b>COUNTRY SUB-ENTITY IDENTIFICATION</b>	<b>C</b>	<b>an..9</b>	<b>O</b>
	Identification of the name of sub-entities (state, province) defined by appropriate governmental agencies.			
	1-3 character subdivision code ISO 3166-2.			
<b>3251</b>	<b>POSTCODE IDENTIFICATION</b>	<b>C</b>	<b>an..9</b>	<b>D</b>
	Code defining postal zones or addresses.			
	Postal code when exists.			
<b>3207</b>	<b>COUNTRY, CODED</b>	<b>C</b>	<b>an..3</b>	<b>R</b>
	Identification of the name of a country or other geographical entity as specified in ISO 3166.			
	2-letter country code ISO 3166-1.			



**Segment:** **GDS** Nature of Cargo  
**Position:** 1960  
**Group:** SG19-SG41  
**Level:** 3  
**Usage:** Conditional (Required)  
**Max Use:** 2  
**Purpose:** A segment to describe the nature of cargo.

**Dependency Notes:**

**Semantic Notes:**

**Comments:**

**Notes:** The general description must be given by:

- Annex II - Eurostat Maritime Transport Directive with one digit. This situation is required.

- Annex II - Eurostat Maritime Transport Directive with two digits. This situation is required for the Port of Lisbon and the Port of Sines.

Example: Solid bulk

GDS+2::2'

**Data Element Summary**

<u>Data Element</u>	<u>Component Element</u>	<u>Name</u>	<u>Base Attributes</u>	<u>User Attributes</u>
C703		<b>NATURE OF CARGO</b> Rough classification of a type of cargo.	C	R
	7085	<b>Nature of cargo, coded</b> Code indicating the type of cargo as a rough classification. Annex II - Eurostat Maritime Transport Directive	M an..3	M
	1131	<b>Code list qualifier</b> Identification of a code list.	C an..3	X
	3055	<b>Code list responsible agency, coded</b> Code identifying the agency responsible for a code list. 2 CEC (Commission of the European Communities) Generic: see also 140, 141, 142, 162.	C an..3	O

**Group:** **MEA** Segment Group 43: Measurements  
**Position:** 1970  
**Group:** Segment Group 41 (Goods Item Details) Conditional (Dependent)  
**Level:** 3  
**Usage:** Conditional (Dependent)  
**Max Use:** 2  
**Purpose:** A group of segments to specify measurements applicable to a goods item.  
**Notes:** Two occurrences of the group can be used, one to display the gross weight and another to display volume. Weight must be displayed in every occasion, while the volume is an optional information.

Only for the Port of Lisbon, in the presence of empty containers this segment must have the sum of the tare of all containers associated with the type specified in GDS.

**Segment Summary**

	<b>Pos.</b>	<b>Seg.</b>		<b>Req.</b>	<b>Max.</b>	<b>Group:</b>
	<b><u>No.</u></b>	<b><u>ID</u></b>	<b><u>Name</u></b>	<b><u>Des.</u></b>	<b><u>Use</u></b>	<b><u>Repeat</u></b>
M	1980	MEA	Measurements	M	1	

**Segment:** **MEA** Measurements  
**Position:** 1980 (Trigger Segment)  
**Group:** SG19-SG41-SG43  
**Level:** 3  
**Usage:** Mandatory  
**Max Use:** 1  
**Purpose:** A segment to specify measurements, other than dimensions, applicable to a goods item.

**Dependency Notes:**

**Semantic Notes:**

**Comments:**

**Notes:** Example: Gross weight 3928 Kg.

MEA+AAI+AAD+KGM:392800'

**Data Element Summary**

<u>Data Element</u>	<u>Component Element</u>	<u>Name</u>	<u>Base Attributes</u>	<u>User Attributes</u>
6311		<b>MEASUREMENT PURPOSE QUALIFIER</b> Specification of the purpose of the measurement.	<b>M an..3</b>	<b>M</b>
	AAE	Measurement [6314] Value of the measured unit.		
	AAI	Item weight Weight at line item level. <i>Only provided for backward compatibility. It will be used like 'AAE'.</i>		
	WT	Weights Only for the Port of Lisbon, in the presence of empty containers.		
C502		<b>MEASUREMENT DETAILS</b> Identification of measurement type.	<b>C</b>	<b>R</b>
	6313	<b>Property measured, coded</b> Specification of the property measured.	<b>C an..3</b>	<b>R</b>
	AAD	Total gross weight [6292] Weight (mass) of goods including packing but excluding the carrier's equipment.		
	ABJ	Volume The amount of air space taken up by the entity identified in the 6311 qualifier.		
	T	Tare weight Weight excluding goods and loose accessories. Only for the Port of Lisbon, in the presence of empty containers.		
	6321	<b>Measurement significance, coded</b> Code specifying the significance of a measurement value.	<b>C an..3</b>	<b>X</b>

Common Platform - Manifest Message Format - Version 1.3j2

	<b>6155</b>	<b>Measurement attribute identification</b>	<b>C</b>	<b>an..17</b>	<b>X</b>
		Code used to specify non-discrete measurement values.			
	<b>6154</b>	<b>Measurement attribute</b>	<b>C</b>	<b>an..70</b>	<b>X</b>
		To specify non-discrete measurement values.			
<b>C174</b>		<b>VALUE/RANGE</b>	<b>C</b>		<b>R</b>
		Measurement value and relevant minimum and maximum tolerances in that order.			
	<b>6411</b>	<b>Measure unit qualifier</b>	<b>M</b>	<b>an..3</b>	<b>M</b>
		Indication of the unit of measurement in which weight (mass), capacity, length, area, volume or other quantity is expressed.			
		UN/ECE Recommendation 20 - Annex II			
		KGM		kilogram	
		MTQ		cubic meter	
	<b>6314</b>	<b>Measurement value</b>	<b>C</b>	<b>an..18</b>	<b>R</b>
		Value of the measured unit.			
	<b>6162</b>	<b>Range minimum</b>	<b>C</b>	<b>n..18</b>	<b>X</b>
		Minimum of a range.			
	<b>6152</b>	<b>Range maximum</b>	<b>C</b>	<b>n..18</b>	<b>X</b>
		Maximum of a range.			
	<b>6432</b>	<b>Significant digits</b>	<b>C</b>	<b>n..2</b>	<b>X</b>
		To specify the number of significant digits.			
<b>7383</b>		<b>SURFACE/LAYER INDICATOR, CODED</b>	<b>C</b>	<b>an..3</b>	<b>X</b>
		Code indicating the surface or layer of a product that is being described.			

**Group:** **RFF** Segment Group 45: Reference  
**Position:** 2030  
**Group:** Segment Group 41 (Goods Item Details) Conditional (Dependent)  
**Level:** 3  
**Usage:** Conditional (Optional)  
**Max Use:** 9  
**Purpose:** A group of segments to identify references to a goods item.  
**Notes:** This group is to provide a way to send other references related with the goods.

When these references are transport documents then they must refer to the previous transport stage.

Documents referenced in this group are not to be used for customs purposes. Documents for customs purposes are to be referenced in the DOC segment in group 49.

**Segment Summary**

	<b>Pos.</b>	<b>Seg.</b>		<b>Req.</b>	<b>Max.</b>	<b>Group:</b>
	<b><u>No.</u></b>	<b><u>ID</u></b>	<b><u>Name</u></b>	<b><u>Des.</u></b>	<b><u>Use</u></b>	<b><u>Repeat</u></b>
M	2040	RFF	Reference	M	1	
R	2050	DTM	Date/Time/Period	C	9	

**Segment:** **RFF** Reference  
**Position:** 2040 (Trigger Segment)  
**Group:** SG19-SG41-SG45  
**Level:** 3  
**Usage:** Mandatory  
**Max Use:** 1  
**Purpose:** A segment to identify a reference to a goods item.  
**Dependency Notes:**  
**Semantic Notes:**  
**Comments:**  
**Notes:** Example: House Bill of Lading 554142.

RFF+BH:554142'

### Data Element Summary

<u>Data Element</u>	<u>Component Element</u>	<u>Name</u>	<u>Base Attributes</u>	<u>User Attributes</u>
C506		REFERENCE	M	M
		Identification of a reference.		
	1153	Reference qualifier	M an..3	M
		Code giving specific meaning to a reference segment or a reference number.		
	AAB	Proforma invoice number [1088] Reference number assigned by the seller to a Proforma Invoice. Reference.		
	AAM	Waybill number Reference number assigned to a waybill, see: 1001 = 700. Document of Transport.		
	AAP	Part consignment number [1310] Reference to a specific consignment forming part of a contract allowing part deliveries. Reference.		
	AAS	Transport document number [1188] Reference assigned by the carrier or his agent to the transport document. Document of Transport.		
	ABH	Sub-house bill of lading number Reference assigned to a sub-house bill of lading. Document of Transport.		
	ABT	Customs declaration number [1426] Number, assigned or accepted by Customs, to identify a Goods declaration. Reference.		
	AEE	Eur 1 certificate number		

	Reference number assigned to a Eur 1 certificate. Reference.
AEW	Empty container bill number Reference number assigned to an empty container bill, see: 1001 = 708. Document of Transport. Only allowed for the movement of empty containers.
AEX	Non-negotiable maritime transport document number Reference number assigned to a sea waybill, see: 1001 = 712. Document of Transport.
AEZ	Despatch note (post parcels) number (1128) Reference number assigned to a despatch note (post parcels), see: 1001 = 750. Document of Transport.
AFA	Through bill of lading number Reference number assigned to a through bill of lading, see: 1001 = 761. Document of Transport.
AFB	Cargo manifest number Reference number assigned to a cargo manifest, see: 1001 = 785. Document of Transport.
AFM	Secondary Customs reference Reference.
AHI	Transport contract reference number Reference number of a transport contract. Reference.
AHT	Quarantine/treatment status reference number Coded quarantine/treatment status of a container and its cargo and packing materials, generated by a shipping company based upon declarations presented by a shipper. Reference.
AID	Certificate of conformity Certificate certifying the conformity to predefined definitions. Reference.
AIZ	Consolidated invoice number Invoice number into which other invoices are consolidated. Reference.
AKA	Container disposition order reference number Reference assigned to the empty container disposition order. Reference.
AKR	General cargo consignment reference number Reference number identifying a particular general cargo (non-containerised or break bulk) consignment. Document of Transport.

Common Platform - Manifest Message Format - Version 1.3j2

ALK	Consignee's invoice number The invoice number assigned by a consignee. Reference.
BH	House bill of lading number Reference number assigned to a house bill of lading, see: 1001 = 714. Document of Transport.
BM	Bill of lading number Reference number assigned to a bill of lading, see: 1001 = 705. Document of Transport.
BN	Booking reference number [1016] Reference number assigned by the carrier or his agent when cargo space is reserved prior to loading. Reference.
CFO	Consignor's further order Reference of an order given by the consignor after departure of the means of transport. Reference.
CG	Consignee's order number Reference.
CMR	Road consignment note number Reference number assigned to a road consignment note, see: 1001 = 730. Document of Transport.
CU	Consignor's reference number [1140] Reference number assigned by a consignor to a particular shipment for his own purposes or for those of the consignee. Reference.
ED	Export declaration Number assigned by the exporter to his export declaration number submitted to an authority. Reference.
EX	Export licence number [1208] Reference number assigned by issuing authority to an Export Licence. Reference.
FF	Freight forwarder's reference number [1460] Reference number assigned to the consignment by the freight forwarder. Reference.
HWB	House waybill number Reference number assigned to a house waybill, see: 1001 = 703. Document of Transport.



Common Platform - Manifest Message Format - Version 1.3j2

IP	<p>Import licence number</p> <p>[1106] Reference number assigned by the issuing authority to an Import Licence.</p> <p>Reference.</p>
IV	<p>Invoice number</p> <p>[1334] Reference number assigned by the seller to a Commercial Invoice.</p> <p>Reference.</p>
MA	<p>Ship notice/manifest number</p> <p>Document of Transport.</p>
MB	<p>Master bill of lading number</p> <p>Reference number assigned to a master bill of lading, see: 1001 = 704.</p> <p>Document of Transport.</p>
MWB	<p>Master air waybill number</p> <p>Reference number assigned to a master air waybill, see: 1001 = 741.</p> <p>Document of Transport.</p>
PK	<p>Packing list number</p> <p>(1014) Reference number assigned to a packing list, see: 1001 = 271.</p> <p>Document of Transport.</p>
RCN	<p>Railway consignment note number</p> <p>Reference number assigned to a rail consignment note, see: 1001 = 720.</p> <p>Document of Transport.</p>
SRN	<p>Shipment reference number</p> <p>[1140] Reference number assigned by a consignor to a particular shipment for his own purposes or for those of the consignee.</p> <p>Reference.</p>
TB	<p>Trucker's bill of lading</p> <p>A cargo list/description issued by a motor carrier of freight.</p> <p>Document of Transport.</p>
UCN	<p>Unique consignment reference number</p> <p>(1202) Unique reference of a consignment (UCRN) used for identification purposes in documents and messages exchanged between parties in international trade. See also: Unique Identifier Code (UNIC) in UN/ECE Recommendation No. 8, March 1992.</p> <p>Reference.</p>
WY	<p>Rail waybill number</p> <p>Document of Transport.</p>

**1154 Reference number**

**C an..35 R**

Identification number the nature and function of which can be qualified by an entry in

Common Platform - Manifest Message Format - Version 1.3j2

	data element 1153 Reference qualifier.			
<b>1156</b>	<b>Line number</b>	<b>C</b>	<b>an..6</b>	<b>X</b>
	Number of the line in the document/message referenced in 1154 Reference number.			
<b>4000</b>	<b>Reference version number</b>	<b>C</b>	<b>an..35</b>	<b>X</b>
	To uniquely identify a reference by its revision number.			

**Segment:** **DTM** Date/Time/Period  
**Position:** 2050  
**Group:** SG19-SG41-SG45  
**Level:** 4  
**Usage:** Conditional (Required)  
**Max Use:** 9  
**Purpose:** A segment to indicate date and time relating to the reference.

**Dependency Notes:**

**Semantic Notes:**

**Comments:**

**Notes:** The complete meaning of this date depends of the type of reference in the previous RFF segment, stated in RFF:C506:1153 data element.

Example: Date of the reference: "2003/10/08 - 10:15"

DTM+171:200310081015:203'

Example: Date of the reference: "2003/10/08 - 15:25 UTC+3". Attention that in this case the defined escape character must be used in the date/time format, if the time zone is positive in relation to GMT. If the escape character is '?' then

DTM+171:200310081525?+03:303'

**Data Element Summary**

<u>Data Element</u>	<u>Component Element</u>	<u>Name</u>	<u>Base Attributes</u>	<u>User Attributes</u>
C507		<b>DATE/TIME/PERIOD</b> Date and/or time, or period relevant to the specified date/time/period type.	<b>M</b>	<b>M</b>
	<b>2005</b>	<b>Date/time/period qualifier</b> Code giving specific meaning to a date, time or period. 171 Reference date/time Date/time on which the reference was issued.	<b>M an..3</b>	<b>M</b>
	<b>2380</b>	<b>Date/time/period</b> The value of a date, a date and time, a time or of a period in a specified representation. According with UN/ECE Recommendation N°7.	<b>C an..35</b>	<b>R</b>
	<b>2379</b>	<b>Date/time/period format qualifier</b> Specification of the representation of a date, a date and time or of a period. 203 CCYYMMDDHHMM Calendar date including time with minutes: C=Century; Y=Year; M=Month; D=Day; H=Hour; M=Minutes. 303 CCYYMMDDHHMMZZZ See 203 plus Z=Time zone.	<b>C an..3</b>	<b>R</b>

**Group:** **PCI** Segment Group 46: Package Identification  
**Position:** 2060  
**Group:** Segment Group 41 (Goods Item Details) Conditional (Dependent)  
**Level:** 3  
**Usage:** Conditional (Dependent)  
**Max Use:** 999  
**Purpose:** A group of segments to specify marks and numbers of a goods item.  
**Notes:** If it is a transport equipment and it is not empty the element 8275 is required.

When marks are unknown fill in element 7102 with "No Marks".

When referring to vehicles the first 7102 is used to declare the maker and the model, and the second to declare the chassis number. This is required by Customs.

These values are not needed in the case of empty transport equipment, since an empty transport equipment does not carry packages.

**Segment Summary**

	<b>Pos.</b>	<b>Seg.</b>	<b>Name</b>	<b>Req.</b>	<b>Max.</b>	<b>Group:</b>
	<b><u>No.</u></b>	<b><u>ID</u></b>	<b><u>Name</u></b>	<b><u>Des.</u></b>	<b><u>Use</u></b>	<b><u>Repeat</u></b>
M	2070	PCI	Package Identification	M	1	

**Segment:** **PCI** Package Identification  
**Position:** 2070 (Trigger Segment)  
**Group:** SG19-SG41-SG46  
**Level:** 3  
**Usage:** Mandatory  
**Max Use:** 1  
**Purpose:** A segment to specify marks and numbers of a good item.  
**Dependency Notes:**  
**Semantic Notes:**  
**Comments:**  
**Notes:** Example: Free text marks, marks: RAW, numbers: 12345, occupies part of container.  
 PCI+28+RAW:12345+2'

**Data Element Summary**

<u>Data Element</u>	<u>Component Element</u>	<u>Name</u>	<u>Base Attributes</u>	<u>User Attributes</u>
4233		<b>MARKING INSTRUCTIONS, CODED</b>	<b>C an..3</b>	<b>O</b>
		Code indicating instructions on how specified packages or physical units should be marked. UN/EDIFACT code list for Data Element 4233.		
C210		<b>MARKS &amp; LABELS</b>	<b>C</b>	<b>R</b>
		Shipping marks on packages in free text; one to ten lines.		
	7102	<b>Shipping marks</b>	<b>M an..35</b>	<b>M</b>
		Marks and numbers identifying individual packages. See segment group 46 notes in the situation of vehicles.		
	7102	<b>Shipping marks</b>	<b>C an..35</b>	<b>O</b>
		Marks and numbers identifying individual packages. See segment group 46 notes in the situation of vehicles.		
	7102	<b>Shipping marks</b>	<b>C an..35</b>	<b>O</b>
		Marks and numbers identifying individual packages.		
	7102	<b>Shipping marks</b>	<b>C an..35</b>	<b>O</b>
		Marks and numbers identifying individual packages.		
	7102	<b>Shipping marks</b>	<b>C an..35</b>	<b>O</b>
		Marks and numbers identifying individual packages.		
	7102	<b>Shipping marks</b>	<b>C an..35</b>	<b>O</b>
		Marks and numbers identifying individual packages.		
	7102	<b>Shipping marks</b>	<b>C an..35</b>	<b>O</b>
		Marks and numbers identifying individual packages.		

Common Platform - Manifest Message Format - Version 1.3j2

		Marks and numbers identifying individual packages.			
<b>7102</b>	<b>Shipping marks</b>		<b>C</b>	<b>an..35</b>	<b>O</b>
		Marks and numbers identifying individual packages.			
<b>8275</b>	<b>CONTAINER/PACKAGE STATUS, CODED</b>		<b>C</b>	<b>an..3</b>	<b>X</b>
		Code to identify whether goods of separate description or comprising separate consignments are contained in the same external packaging or to indicate that a container or similar unit load device is empty.			
<b>C827</b>	<b>TYPE OF MARKING</b>		<b>C</b>		<b>X</b>
		Specification of the type of marking that reflects the method that was used and the conventions adhered to for marking (e.g. of packages).			
<b>7511</b>	<b>Type of marking, coded</b>		<b>M</b>	<b>an..3</b>	<b>X</b>
		To specify the type of marking that reflects the method and the conventions adhered to for marking.			
<b>1131</b>	<b>Code list qualifier</b>		<b>C</b>	<b>an..3</b>	<b>X</b>
		Identification of a code list.			
<b>3055</b>	<b>Code list responsible agency, coded</b>		<b>C</b>	<b>an..3</b>	<b>X</b>
		Code identifying the agency responsible for a code list.			

**Group:** **GOR** Segment Group 48: Governmental Requirements

**Position:** 2140

**Group:** Segment Group 41 (Goods Item Details) Conditional (Dependent)

**Level:** 3

**Usage:** Conditional (Optional)

**Max Use:** 9

**Purpose:** A group of segments to identify customs and other governmental procedures and required documents relating to the goods item.

**Notes:** This group has several uses, all related with customs procedures. It is to indicate applicable governmental procedures related to import (according with Customs definition), export (according with Customs definition) and transit (according with Customs definition).

One usage is to give the EU status. This is, if goods are in free practice or not, and if it has Customs formalities to fulfil.

It is also used to state if simplified procedures are used or not, and if they are, then inform the type of simplification applied.

On some of these situations the group DOC must be used. For document details see DOC segment, group 49.

**Segment Summary**

	<b>Pos.</b>	<b>Seg.</b>	<b>Name</b>	<b>Req.</b>	<b>Max.</b>	<b>Group:</b>
	<b><u>No.</u></b>	<b><u>ID</u></b>	<b><u>Name</u></b>	<b><u>Des.</u></b>	<b><u>Use</u></b>	<b><u>Repeat</u></b>
M	2150	GOR	Governmental Requirements	M	1	
D	2190	FTX	Free Text	C	9	
	2200		Segment Group 49: Document/Message Details	C		9

**Segment:** **GOR** **Governmental Requirements**  
**Position:** 2150 (Trigger Segment)  
**Group:** SG19-SG41-SG48  
**Level:** 3  
**Usage:** Mandatory  
**Max Use:** 1  
**Purpose:** A segment to indicate applicable governmental procedures related to import, export and transport of the goods item.

**Dependency Notes:**

**Semantic Notes:**

**Comments:**

**Notes:** In the context of the group usage, the purpose of the segment is to indicate applicable governmental procedures related to import (according with Customs definition), export (according with Customs definition) and transit (according with Customs definition).

These codes are applied in the transit simplified procedures in 8323. They are 'ZT1', 'ZW', 'ZTF', 'ZTD', 'ZC' and 'ZX', and they are to be used according to the Customs procedure in practice..

These code are applied without regular line services in 8323. They are 'ZC', 'ZN' and 'ZF', and they are to be used to give information about the status of goods.

Example: Community Goods.

GOR+ZC+5'

**Data Element Summary**

<u>Data Element</u>	<u>Component Element</u>	<u>Name</u>	<u>Base Attributes</u>	<u>User Attributes</u>
8323		TRANSPORT MOVEMENT, CODED	C an..3	R

Code indicating the movement of goods (e.g. import, export, transit).

Usage of this element:

1. Authorised Regular Line services (Regulation n° 2454/93)

1.1. With simplified transit procedures (ZS1 and ZS2)  
 'ZT1' Non-Community Goods and, under certain conditions, for Community Goods  
 'ZTF' and 'ZW' Community Goods. An interchange is used between 2 EC  
 Customs territories where VAT is applied in one of them but not in the other  
 'ZTD' Goods supported by a transit document ZT1, ZT2 or ZTF, a TIR or ATA  
 booklet, other suspensive regimes and other documents accepted by Customs  
 Authority.

'ZC' Community Goods in the remaining interchange

'ZX' Community Goods to be exported not subject to a transit regime.

1.2. Simplified transit procedures not applied (ZS0)

2. Without regular line services



2.1. Use the following codes when the manifest is cleared by the Customs, or the manifest has the identification of the Authorized Expeditor  
 'ZF' Shipping of Community goods with destination/origin in a EC Customs territory where Directive 77/388/CEE is not applied  
 'ZC' Use the following code when the manifest is cleared by the Customs, or the manifest has the identification of the Authorized Expeditor and others for which the community status can be proofed  
 'ZN' Remaining Goods

ZC	Goods that their status can be proofed.
ZF	Shipping of community goods with destination/origin in a EC Customs territory where Directive 77/388/CEE is not applied
ZN	Remaining goods
ZS0	No Simplified Procedures
ZS1	Simplified Procedures Level I
ZS2	Simplified Procedures Level II
ZT1	Goods subject to an external community transit regime.
ZTD	Goods subject to a transit regime or transported in the scope of the active perfectionism, deposit or temporary import.
ZTF	Goods subject to internal transit regime from, to or between non fiscal territories.
ZW	T2F Customs status
ZX	Community Goods to be exported not subject to a transit regime.

<b>C232</b>	<b>GOVERNMENT ACTION</b>	<b>C</b>	<b>R</b>
	Code indicating a type of government action.		
<b>9415</b>	<b>Government agency, coded</b>	<b>C an..3</b>	<b>R</b>
	To indicate government agencies that are involved.		
	5 Customs Customs authorities.		
<b>9411</b>	<b>Government involvement, coded</b>	<b>C an..3</b>	<b>X</b>
	Indication of requirement and status of government involvement.		
<b>9417</b>	<b>Government action, coded</b>	<b>C an..3</b>	<b>X</b>
	To indicate type of government action such as inspection, detention, fumigation, security.		
<b>9353</b>	<b>Government procedure, coded</b>	<b>C an..3</b>	<b>X</b>
	Code identifying the treatment applied by the government to goods which are subject to a control.		
<b>C232</b>	<b>GOVERNMENT ACTION</b>	<b>C</b>	<b>X</b>
	Code indicating a type of government action.		
<b>9415</b>	<b>Government agency, coded</b>	<b>C an..3</b>	<b>X</b>
	To indicate government agencies that are involved.		
<b>9411</b>	<b>Government involvement, coded</b>	<b>C an..3</b>	<b>X</b>
	Indication of requirement and status of government involvement.		
<b>9417</b>	<b>Government action, coded</b>	<b>C an..3</b>	<b>X</b>

		To indicate type of government action such as inspection, detention, fumigation, security.			
	<b>9353</b>	<b>Government procedure, coded</b>	<b>C</b>	<b>an..3</b>	<b>X</b>
		Code identifying the treatment applied by the government to goods which are subject to a control.			
<b>C232</b>		<b>GOVERNMENT ACTION</b>	<b>C</b>		<b>X</b>
		Code indicating a type of government action.			
	<b>9415</b>	<b>Government agency, coded</b>	<b>C</b>	<b>an..3</b>	<b>X</b>
		To indicate government agencies that are involved.			
	<b>9411</b>	<b>Government involvement, coded</b>	<b>C</b>	<b>an..3</b>	<b>X</b>
		Indication of requirement and status of government involvement.			
	<b>9417</b>	<b>Government action, coded</b>	<b>C</b>	<b>an..3</b>	<b>X</b>
		To indicate type of government action such as inspection, detention, fumigation, security.			
	<b>9353</b>	<b>Government procedure, coded</b>	<b>C</b>	<b>an..3</b>	<b>X</b>
		Code identifying the treatment applied by the government to goods which are subject to a control.			
<b>C232</b>		<b>GOVERNMENT ACTION</b>	<b>C</b>		<b>X</b>
		Code indicating a type of government action.			
	<b>9415</b>	<b>Government agency, coded</b>	<b>C</b>	<b>an..3</b>	<b>X</b>
		To indicate government agencies that are involved.			
	<b>9411</b>	<b>Government involvement, coded</b>	<b>C</b>	<b>an..3</b>	<b>X</b>
		Indication of requirement and status of government involvement.			
	<b>9417</b>	<b>Government action, coded</b>	<b>C</b>	<b>an..3</b>	<b>X</b>
		To indicate type of government action such as inspection, detention, fumigation, security.			
	<b>9353</b>	<b>Government procedure, coded</b>	<b>C</b>	<b>an..3</b>	<b>X</b>
		Code identifying the treatment applied by the government to goods which are subject to a control.			

**Segment:** **FTX** Free Text  
**Position:** 2190  
**Group:** SG19-SG41-SG48  
**Level:** 4  
**Usage:** Conditional (Dependent)  
**Max Use:** 9  
**Purpose:** A segment to provide additional governmental requirements information for the goods item.

**Dependency Notes:**

**Semantic Notes:**

**Comments:**

**Notes:** This segment is to specify the information regarding the entity that issued the Certificate of Authorized Expeditor.

Example: Certificate issued by ZXCV.

FTX+CUS+++ZXCV'

**Data Element Summary**

<u>Data Element</u>	<u>Component Element</u>	<u>Name</u>	<u>Base Attributes</u>	<u>User Attributes</u>
4451		<b>TEXT SUBJECT QUALIFIER</b> Code specifying subject of a free text. CUS Customs declaration information Note contains customs declaration information.	<b>M an..3</b>	<b>M</b>
4453		<b>TEXT FUNCTION, CODED</b> Code specifying how to handle the text.	<b>C an..3</b>	<b>X</b>
C107		<b>TEXT REFERENCE</b> Coded reference to a standard text and its source. Use this composite element if a code to identify the entity is known.	<b>C</b>	<b>D</b>
	4441	<b>Free text identification</b> Free text in coded form. Codes according to list to be provided.	<b>M an..17</b>	<b>M</b>
	1131	<b>Code list qualifier</b> Identification of a code list.	<b>C an..3</b>	<b>X</b>
	3055	<b>Code list responsible agency, coded</b> Code identifying the agency responsible for a code list. 155 PT, Portuguese Customs	<b>C an..3</b>	<b>O</b>
C108		<b>TEXT LITERAL</b> Free text; one to five lines. Use this composite element if a code to identify the entity is not known.	<b>C</b>	<b>D</b>
	4440	<b>Free text</b> Free text field available to the message sender for information.	<b>M an..70</b>	<b>M</b>

Common Platform - Manifest Message Format - Version 1.3j2

4440	<b>Free text</b>	<b>C an..70</b>	<b>O</b>
	Free text field available to the message sender for information.		
4440	<b>Free text</b>	<b>C an..70</b>	<b>O</b>
	Free text field available to the message sender for information.		
4440	<b>Free text</b>	<b>C an..70</b>	<b>O</b>
	Free text field available to the message sender for information.		
4440	<b>Free text</b>	<b>C an..70</b>	<b>O</b>
	Free text field available to the message sender for information.		
3453	<b>LANGUAGE, CODED</b>	<b>C an..3</b>	<b>X</b>
	Code of language (ISO 639-1988).		

**Group:** **DOC** Segment Group 49: Document/Message Details  
**Position:** 2200  
**Group:** Segment Group 48 (Governmental Requirements) Conditional (Optional)  
**Level:** 4  
**Usage:** Conditional (Optional)  
**Max Use:** 9  
**Purpose:** A group of segments to specify required documents by government for the goods item.  
**Notes:** This group is to identify any document needed for customs purposes, independent of its type (customs declarations, commercial documents, or other).  
 When it is needed to provide the document's date of issue or year of issue, then use segment DTM.

**Segment Summary**

	<b>Pos.</b>	<b>Seg.</b>	<b>Name</b>	<b>Req.</b>	<b>Max.</b>	<b>Group:</b>
	<b><u>No.</u></b>	<b><u>ID</u></b>	<b><u>Name</u></b>	<b><u>Des.</u></b>	<b><u>Use</u></b>	<b><u>Repeat</u></b>
M	2210	DOC	Document/Message Details	M	1	
O	2220	DTM	Date/Time/Period	C	1	

**Segment:** **DOC** Document/Message Details  
**Position:** 2210 (Trigger Segment)  
**Group:** SG19-SG41-SG48-SG49  
**Level:** 4  
**Usage:** Mandatory  
**Max Use:** 1  
**Purpose:** A segment to indicate a document required by government.  
**Dependency Notes:**  
**Semantic Notes:**  
**Comments:**

**Notes:** State the document type and number according to Customs Regulations and with what was stated in the GOR segments.

The documents referenced in this segment are for customs purposes.

Example: Community Goods (SG48:GOR:8323='ZC'), Despatch T2L No.: "ES08114123456"

DOC+825+ES08114123456'

Example: Certificate of Authorized Expeditor JTG568

DOC+Z02+JTG568'

#### Data Element Summary

<u>Data Element</u>	<u>Component Element</u>	<u>Name</u>	<u>Base Attributes</u>	<u>User Attributes</u>
C002		DOCUMENT/MESSAGE NAME	M	M
		Identification of a type of document/message by code or name. Code preferred.		
	1001	Document/message name, coded	C an..3	R
		Document/message identifier expressed in code.		
		2 Certificate of conformity Certificate certifying the conformity to predefined definitions.		
		3 Certificate of quality Certificate certifying the quality of goods, services etc.		
		18 Movement certificate A.TR.1 Specific form of transit declaration issued by the exporter (movement certificate).		
		271 Packing list Document/message specifying the distribution of goods in individual packages (in trade environment the despatch advice message is used for the packing list).		
		380 Commercial invoice Document/message claiming payment for goods or services supplied under conditions agreed between seller and buyer.		
		650 Handling order		

	Document/message issued by a cargo handling organization (port administration, terminal operator, etc.) for the removal or other handling of goods under their care.
701	Universal (multipurpose) transport document Document/message evidencing a contract of carriage covering the movement of goods by any mode of transport, or combination of modes, for national as well as international transport, under any applicable international convention or national law and under the conditions of carriage of any carrier or transport operator undertaking or arranging the transport referred to in the document.
703	House waybill The document made out by an agent/consolidator which evidences the contract between the shipper and the agent/consolidator for the arrangement of carriage of goods.
704	Master bill of lading A bill of lading issued by the master of a vessel (in actuality the owner or charterer of the vessel). It could cover a number of house bills.
705	Bill of lading Negotiable document/message which evidences a contract of carriage by sea and the taking over or loading of goods by carrier, and by which carrier undertakes to deliver goods against surrender of the document. A provision in the document that goods are to be delivered to the order of a named person, or to order, or to bearer, constitutes such an undertaking.
710	Sea waybill Non-negotiable document which evidences a contract for the carriage of goods by sea and the taking over of the goods by the carrier, and by which the carrier undertakes to deliver the goods to the consignee named in the document.
712	Non-negotiable maritime transport document (generic) Non-negotiable document which evidences a contract for the carriage of goods by sea and the taking over or loading of the goods by the carrier, and by which the carrier undertakes to deliver the goods to the consignee named in the document. E.g. Sea waybill. Remark: Synonymous with "straight" or "non-negotiable Bill of lading" used in certain countries, e.g. Canada.
714	House bill of lading The bill of lading issued not by the carrier but by the freight forwarder/consolidator known by the carrier.
716	Forwarder's bill of lading Non-negotiable document issued by a freight forwarder evidencing a contract for the carriage of goods by sea and the taking over or loading of the goods by the freight forwarder, and by which the freight forwarder undertakes to deliver the goods to the consignee named in the document.
720	Rail consignment note (generic term) Transport document constituting a contract for the carriage of

	<p>goods between the sender and the carrier (the railway). For international rail traffic, this document must conform to the model prescribed by the international conventions concerning carriage of goods by rail, e.g. CIM Convention, SMGS Convention.</p>
722	<p>Road list-SMGS</p> <p>Accounting document, one copy of which is drawn up for each consignment note; it accompanies the consignment over the whole route and is a rail transport document.</p>
730	<p>Road consignment note</p> <p>Transport document/message which evidences a contract between a carrier and a sender for the carriage of goods by road (generic term). Remark: For international road traffic, this document must contain at least the particulars prescribed by the convention on the contract for the international carriage of goods by road (CMR).</p>
740	<p>Air waybill</p> <p>Document/message made out by or on behalf of the shipper which evidences the contract between the shipper and carrier(s) for carriage of goods over routes of the carrier(s) and which is identified by the airline prefix issuing the document plus a serial (IATA).</p>
741	<p>Master air waybill</p> <p>Document/message made out by or on behalf of the agent/consolidator which evidences the contract between the agent/consolidator and carrier(s) for carriage of goods over routes of the carrier(s) for a consignment consisting of goods originated by more than one shipper (IATA).</p>
746	<p>Delivery notice (rail transport)</p> <p>Document/message created by the consignor or by the departure station, joined to the transport or sent to the consignee, giving the possibility to the consignee or the arrival station to attest the delivery of the goods. The document must be returned to the consignor or to the departure station.</p>
750	<p>Despatch note (post parcels)</p> <p>Document/message which, according to Article 106 of the "Agreement concerning Postal Parcels" under the UPU convention, is to accompany post parcels.</p>
760	<p>Multimodal/combined transport document (generic)</p> <p>A transport document used when more than one mode of transportation is involved in the movement of cargo. It is a contract of carriage and receipt of the cargo for a multimodal transport. It indicates the place where the responsible transport company in the move takes responsibility for the cargo, the place where the responsibility of this transport company in the move ends and the conveyances involved.</p>
761	<p>Through bill of lading</p> <p>Bill of lading which evidences a contract of carriage from one place to another in separate stages of which at least one stage is a sea transit, and by which the issuing carrier accepts</p>



	responsibility for the carriage as set forth in the through bill of lading.
763	<p>Forwarder's certificate of transport</p> <p>Negotiable document/message issued by a forwarder to certify that he has taken charge of a specified consignment for despatch and delivery in accordance with the consignor's instructions, as indicated in the document, and that he accepts responsibility for delivery of the goods to the holder of the document through the intermediary of a delivery agent of his choice. E.g. FIATA-FCT.</p>
764	<p>Combined transport document (generic)</p> <p>Negotiable or non-negotiable document evidencing a contract for the performance and/or procurement of performance of combined transport of goods and bearing on its face either the heading "Negotiable combined transport document issued subject to Uniform Rules for a Combined Transport Document (ICC Brochure No. 298)" or the heading "Non-negotiable Combined Transport Document issued subject to Uniform Rules for a Combined Transport Document (ICC Brochure No. 298)".</p>
765	<p>Multimodal transport document (generic)</p> <p>Document/message which evidences a multimodal transport contract, the taking in charge of the goods by the multimodal transport operator, and an undertaking by him to deliver the goods in accordance with the terms of the contract. (International Convention on Multimodal Transport of Goods).</p>
766	<p>Combined transport bill of lading/multimodal bill of lading</p> <p>Document which evidences a multimodal transport contract, the taking in charge of the goods by the multimodal transport operator, and an undertaking by him to deliver the goods in accordance with the terms of the contract.</p>
785	<p>Cargo manifest</p> <p>Listing of goods comprising the cargo carried in a means of transport or in a transport-unit. The cargo manifest gives the commercial particulars of the goods, such as transport document numbers, consignors, consignees, shipping marks, number and kind of packages and descriptions and quantities of the goods.</p>
787	<p>Bordereau</p> <p>Document/message used in road transport, listing the cargo carried on a road vehicle, often referring to appended copies of Road consignment note.</p>
796	<p>Derat document</p> <p>Document certifying that a ship is free of rats, valid to a specified date.</p>
797	<p>Maritime declaration of health</p> <p>Document certifying the health condition on board a vessel, valid to a specified date.</p>
820	<p>Despatch note model T</p> <p>European community transit declaration.</p>

Common Platform - Manifest Message Format - Version 1.3j2

821	Despatch note model T1 Transit declaration for goods circulating under internal community transit procedures (between ECE countries).
822	Despatch note model T2 Ascertainment that the declared goods were originally produced in an ECE country.
823	Control document T5 Control document (export declaration) used particularly in case of re-sending without use with only VAT collection, refusal, nonconformity with contract etc.
825	Despatch note model T2L Ascertainment that the declared goods were originally produced in an EC country. May only be used for goods that are loaded on one single means of transport in one single departure point for one single delivery point.
830	Goods declaration for exportation Document/message by which goods are declared for export Customs clearance, conforming to the layout key set out at Appendix I to Annex C.1 concerning outright exportation to the Kyoto convention (CCC). Within a Customs union, "for despatch" may have the same meaning as "for exportation".
851	Phytosanitary certificate Document/message issued by the competent body in the exporting country evidencing that plants, fruit, or vegetables are free from disease and fit for consumption and giving details on fumigation or other treatment to which they may have been subjected.
852	Sanitary certificate Document/message issued by the competent authority in the exporting country evidencing that alimentary and animal products, including dead animals, are fit for human consumption, and giving details, when relevant, of controls undertaken.
853	Veterinary certificate Document/message issued by the competent authority in the exporting country evidencing that live animals or birds are not infested or infected with disease, and giving details regarding their provenance, and of vaccinations and other treatment to which they have been subjected.
861	Certificate of origin Document/message identifying goods, in which the authority or body authorized to issue it certifies expressly that the goods to which the certificate relates originate in a specific country. The word "country" may include a group of countries, a region or a part of a country. This certificate may also include a declaration by the manufacturer, producer, supplier, exporter or other competent person.
862	Declaration of origin Appropriate statement as to the origin of the goods, made in

	connection with their exportation by the manufacturer, producer, supplier, exporter or other competent person on the Commercial invoice or any other document relating to the goods (CCC).
864	Preference certificate of origin Description to be provided.
865	Certificate of origin form GSP Specific form of certificate of origin for goods qualifying for preferential treatment under the generalized system of preferences (includes a combined declaration of origin and certificate, form A).
933	Cargo declaration (arrival) Generic term, sometimes referred to as Freight declaration, applied to the documents providing the particulars required by the Customs concerning the cargo (freight) carried by commercial means of transport (CCC).
941	Embargo permit Document/message giving the permission to export specified goods.
951	TIF form International Customs transit document by which the sender declares goods for carriage by rail in accordance with the provisions of the 1952 International Convention to facilitate the crossing of frontiers for goods carried by rail (TIF Convention of UIC).
952	TIR carnet International Customs document (International Transit by Road), issued by a guaranteeing association approved by the Customs authorities, under the cover of which goods are carried, in most cases under Customs seal, in road vehicles and/or containers in compliance with the requirements of the Customs TIR Convention of the International Transport of Goods under cover of TIR Carnets (UN/ECE).
954	EUR 1 certificate of origin Customs certificate used in preferential goods interchanges between EC countries and EC external countries.
955	ATA carnet International Customs document (Admission Temporaire / Temporary Admission) which, issued under the terms of the ATA Convention (1961), incorporates an internationally valid guarantee and may be used, in lieu of national Customs documents and as security for import duties and taxes, to cover the temporary admission of goods and, where appropriate, the transit of goods. If accepted for controlling the temporary export and reimport of goods, international guarantee does not apply (CCC).
960	Single administrative document A set of documents, replacing the various (national) forms for Customs declaration within the EC, implemented on 01-01

	-1988.
Z01	T2LF Despatch note model T2LF. Customs code 620 for this document type.
Z02	Certificate of Authorized Expeditor
Z03	Customs status certificate Customs code 622 for this document type.
Z04	DAA Administrative document of accompaniment for products with special taxes on the consumption. Customs code 622 for this document type.
Z05	Administrative document Administrative document of accompaniment for wine products with special taxes on consumption. Customs code 652 for this document type.
Z06	Transit simplified procedure authorization number
Z99	

*Only provided for backward compatibility. Segment will be ignored.*

<b>1131</b>	<b>Code list qualifier</b>	<b>C</b>	<b>an..3</b>	<b>X</b>
	Identification of a code list.			
<b>3055</b>	<b>Code list responsible agency, coded</b>	<b>C</b>	<b>an..3</b>	<b>X</b>
	Code identifying the agency responsible for a code list.			
<b>1000</b>	<b>Document/message name</b>	<b>C</b>	<b>an..35</b>	<b>X</b>
	Plain language identifier specifying the function of a document/message.			
<b>C503</b>	<b>DOCUMENT/MESSAGE DETAILS</b>	<b>C</b>		<b>R</b>
	Identification of document/message by number, status, source and/or language.			
<b>1004</b>	<b>Document/message number</b>	<b>C</b>	<b>an..35</b>	<b>R</b>
	Reference number assigned to the document/message by the issuer.			
<b>1373</b>	<b>Document/message status, coded</b>	<b>C</b>	<b>an..3</b>	<b>X</b>
	To identify the status of a document/message.			
<b>1366</b>	<b>Document/message source</b>	<b>C</b>	<b>an..35</b>	<b>X</b>
	Indication of the source from which the printed information is to be or has been obtained.			
<b>3453</b>	<b>Language, coded</b>	<b>C</b>	<b>an..3</b>	<b>X</b>
	Code of language (ISO 639-1988).			
<b>3153</b>	<b>COMMUNICATION CHANNEL IDENTIFIER, CODED</b>	<b>C</b>	<b>an..3</b>	<b>X</b>
	Code identifying the type of communication channel being used.			
<b>1220</b>	<b>NUMBER OF COPIES OF DOCUMENT REQUIRED</b>	<b>C</b>	<b>n..2</b>	<b>X</b>
	Number of originals or copies of a document stipulated or referred to as being required.			

**1218**

**NUMBER OF ORIGINALS OF DOCUMENT C n..2 X  
REQUIRED**

Specification of the number of originals of a stipulated document that are required.

**Segment:** **DTM** Date/Time/Period  
**Position:** 2220  
**Group:** SG19-SG41-SG48-SG49  
**Level:** 5  
**Usage:** Conditional (Optional)  
**Max Use:** 1  
**Purpose:** A segment to specify the date/time related to the required document.

**Dependency Notes:**

**Semantic Notes:**

**Comments:**

**Notes:** The complete meaning of this date depends of the type of document in the previous DOC segment, stated in DOC:C002:1001 data element.

Example: Date of issue of the document "2003/10/08"

DTM+182:20031008:102'

**Data Element Summary**

<u>Data Element</u>	<u>Component Element</u>	<u>Name</u>	<u>Base Attributes</u>	<u>User Attributes</u>
C507		<b>DATE/TIME/PERIOD</b> Date and/or time, or period relevant to the specified date/time/period type.	<b>M</b>	<b>M</b>
	<b>2005</b>	<b>Date/time/period qualifier</b> Code giving specific meaning to a date, time or period. 182 Issue date Date when a document/message has been or will be issued.	<b>M an..3</b>	<b>M</b>
	<b>2380</b>	<b>Date/time/period</b> The value of a date, a date and time, a time or of a period in a specified representation. According with UN/ECE Recommendation N°7.	<b>C an..35</b>	<b>R</b>
	<b>2379</b>	<b>Date/time/period format qualifier</b> Specification of the representation of a date, a date and time or of a period. 102 CCYYMMDD Calendar date: C = Century ; Y = Year ; M = Month ; D = Day. 602 CCYY Calendar year including century: C = Century; Y = Year. Only to use when the document was the one under which the agent acquired the authorized expeditor status (SG49:DOC:1001='Z02').	<b>C an..3</b>	<b>R</b>

**Group:** **SGP** Segment Group 52: Split Goods Placement  
**Position:** 2280  
**Group:** Segment Group 41 (Goods Item Details) Conditional (Dependent)  
**Level:** 3  
**Usage:** Conditional (Dependent)  
**Max Use:** 999  
**Purpose:** A group of segments to specify the distribution of a goods item among the transport equipment.  
**Notes:** This group depends of the existence of goods loaded into a transport equipment.

This segment group identifies the transport equipment in which the goods are loaded. Details on transport equipment are displayed in the segment group 60. Example: a shipper sends 45 ton of product XPTO distributed as follows: 20 ton in equipment A and 25 to in equipment B.

Note that each transport equipment referred by each occurrence of this group must be described by one occurrence of group 60. For the Port of Leixões and the Port of Sines they must be declared as full in group 60.

When displaying the number of volumes it is necessary to have in mind that the total number of volumes must equal the sum of the loaded volumes on each equipment.

Using this group is based on the knowledge of what goods are in which equipment. Therefore it depends on the knowledge of such information. Thus when using group 52, each equipment referenced will also be identified and described in segment group 60.

For bulk cargo, they are treated as a whole, so they will not be split. This group would not be needed.

In the case of empty transport equipment, this group is used just to relate a particular equipment with information required that appears only in group 41 (example: Warehouse Depositor, Nature of Cargo). This last issue does not apply to the Port of Leixões and the Port of Sines.

#### Segment Summary

	<b>Pos.</b>	<b>Seg.</b>	<b>Name</b>	<b>Req.</b>	<b>Max.</b>	<b>Group:</b>
	<b>No.</b>	<b>ID</b>		<b>Des.</b>	<b>Use</b>	<b>Repeat</b>
M	2290	SGP	Split Goods Placement	M	1	
	2310		Segment Group 53: Measurements	C		1

**Segment:** **SGP** Split Goods Placement  
**Position:** 2290 (Trigger Segment)  
**Group:** SG19-SG41-SG52  
**Level:** 3  
**Usage:** Mandatory  
**Max Use:** 1  
**Purpose:** A segment to identify the equipment in which goods are transported.  
**Dependency Notes:**  
**Semantic Notes:**  
**Comments:**  
**Notes:** Example: Container CGTU 200311/5 carries 10 volumes of the goods.  
 SGP+CGTU2003115+10'

**Data Element Summary**

<u>Data Element</u>	<u>Component Element</u>	<u>Name</u>	<u>Base Attributes</u>	<u>User Attributes</u>
C237		<b>EQUIPMENT IDENTIFICATION</b> Marks (letters and/or numbers) identifying equipment used for transport such as a container.	<b>M</b>	<b>M</b>
	<b>8260</b>	<b>Equipment identification number</b> Marks (letters and/or numbers) which identify equipment e.g. unit load device.	<b>C an..17</b>	<b>R</b>
	<b>1131</b>	<b>Code list qualifier</b> Identification of a code list.	<b>C an..3</b>	<b>X</b>
	<b>3055</b>	<b>Code list responsible agency, coded</b> Code identifying the agency responsible for a code list.	<b>C an..3</b>	<b>X</b>
	<b>3207</b>	<b>Country, coded</b> Identification of the name of a country or other geographical entity as specified in ISO 3166.	<b>C an..3</b>	<b>X</b>
<b>7224</b>		<b>NUMBER OF PACKAGES</b> Number of individual parts of a shipment either unpacked, or packed in such a way that they cannot be divided without first undoing the packing.	<b>C n..8</b>	<b>O</b>



**Group:** **MEA** Segment Group 53: Measurements  
**Position:** 2310  
**Group:** Segment Group 52 (Split Goods Placement) Conditional (Dependent)  
**Level:** 4  
**Usage:** Conditional (Dependent)  
**Max Use:** 1  
**Purpose:** A group of segments to identify measurements.

**Notes:** This group in this part of the structure is to provide measurement only of the goods actually loaded in the equipment referenced in the SGP segment.

In the case of empty transport equipment this information does not apply. So the group does not occur.

An exception to this rule was set by the Port of Lisbon. For the Port of Lisbon only, in the case of empty transport equipment, information about the tare of the equipment has to be provided.

**Segment Summary**

	<b>Pos.</b>	<b>Seg.</b>	<b>Name</b>	<b>Req.</b>	<b>Max.</b>	<b>Group:</b>
	<b><u>No.</u></b>	<b><u>ID</u></b>	<b><u>Name</u></b>	<b><u>Des.</u></b>	<b><u>Use</u></b>	<b><u>Repeat</u></b>
M	2320	MEA	Measurements	M	1	
O	2330	EQN	Number of Units	C	1	

**Segment:** **MEA** Measurements  
**Position:** 2320 (Trigger Segment)  
**Group:** SG19-SG41-SG52-SG53  
**Level:** 4  
**Usage:** Mandatory  
**Max Use:** 1  
**Purpose:** A segment to specify measurements of that portion of the goods item in the equipment.

**Dependency Notes:**

**Semantic Notes:**

**Comments:**

**Notes:** Example: Gross weight 3928 Kg

MEA+AAE+AAD+KGM:392800'

**Data Element Summary**

<u>Data Element</u>	<u>Component Element</u>	<u>Name</u>	<u>Base Attributes</u>	<u>User Attributes</u>
6311		<b>MEASUREMENT PURPOSE QUALIFIER</b> Specification of the purpose of the measurement.	<b>M an..3</b>	<b>M</b>
	AAE	Measurement [6314] Value of the measured unit.		
	AAI	Item weight Weight at line item level. <i>Only provided for backward compatibility.</i>		
	WT	Weights For the Port of Lisbon only.		
C502		<b>MEASUREMENT DETAILS</b> Identification of measurement type.	<b>C</b>	<b>R</b>
	6313	<b>Property measured, coded</b> Specification of the property measured.	<b>C an..3</b>	<b>R</b>
	AAD	Total gross weight [6292] Weight (mass) of goods including packing but excluding the carrier's equipment.		
	ABJ	Volume The amount of air space taken up by the entity identified in the 6311 qualifier.		
	T	Tare weight Weight excluding goods and loose accessories. For the Port of Lisbon only.		
	6321	<b>Measurement significance, coded</b> Code specifying the significance of a measurement value.	<b>C an..3</b>	<b>X</b>
	6155	<b>Measurement attribute identification</b> Code used to specify non-discrete measurement values.	<b>C an..17</b>	<b>X</b>

	<b>6154</b>	<b>Measurement attribute</b> To specify non-discrete measurement values.	<b>C</b>	<b>an..70</b>	<b>X</b>
<b>C174</b>		<b>VALUE/RANGE</b> Measurement value and relevant minimum and maximum tolerances in that order.	<b>C</b>		<b>R</b>
	<b>6411</b>	<b>Measure unit qualifier</b> Indication of the unit of measurement in which weight (mass), capacity, length, area, volume or other quantity is expressed.	<b>M</b>	<b>an..3</b>	<b>M</b>
		UN/ECE Recommendation 20 - Annex II KGM                      kilogram			
	<b>6314</b>	<b>Measurement value</b> Value of the measured unit. Include 2 decimal positions.	<b>C</b>	<b>an..18</b>	<b>R</b>
	<b>6162</b>	<b>Range minimum</b> Minimum of a range.	<b>C</b>	<b>n..18</b>	<b>X</b>
	<b>6152</b>	<b>Range maximum</b> Maximum of a range.	<b>C</b>	<b>n..18</b>	<b>X</b>
	<b>6432</b>	<b>Significant digits</b> To specify the number of significant digits.	<b>C</b>	<b>n..2</b>	<b>X</b>
<b>7383</b>		<b>SURFACE/LAYER INDICATOR, CODED</b> Code indicating the surface or layer of a product that is being described.	<b>C</b>	<b>an..3</b>	<b>X</b>

**Segment:** **EQN** Number of Units  
**Position:** 2330  
**Group:** SG19-SG41-SG52-SG53  
**Level:** 5  
**Usage:** Conditional (Optional)  
**Max Use:** 1  
**Purpose:** A segment to specify the number of equipment units to each of which the given measurement applies.

**Dependency Notes:**

**Semantic Notes:**

**Comments:**

**Notes:** *Only provided for backward compatibility. It will be ignored.*

**Data Element Summary**

<u>Data Element</u>	<u>Component Element</u>	<u>Name</u>	<u>Base Attributes</u>	<u>User Attributes</u>
C523		NUMBER OF UNIT DETAILS Identification of number of units and its purpose.	M	M
	6350	Number of units Number of units of a certain type.	C n..15	R
	6353	Number of units qualifier Indication of the objective of number of units information.	C an..3	X

**Group:** **EQD** Segment Group 60: Equipment Details  
**Position:** 2570  
**Group:** Segment Group 19 (Consignment Information) Conditional (Optional)  
**Level:** 2  
**Usage:** Conditional (Dependent)  
**Max Use:** 999  
**Purpose:** A group of segments to specify equipment in which goods are transported.  
**Notes:** The equipment is identified and its tare must be provided.

When the equipment is full then information about the seal must be provided.

Also, if the equipment is full then its identification must be present in one occurrence of group 52 (SGP) at least. Of course this reference in group 52 is under an occurrence of group 41 (GID) if all/part of the goods described by group 41 are in the equipment. This applies only to the Port of Leixões and to the Port of Sines.

Both references in groups 52 and 60 must be present in the same group 19 (CNI). See notes in group 52.

In element 8155 the container ISO type according to ISO 6346 (2nd and 3rd editions) is sent. In this standard the first number of this codification provides the container length. If unknown then use the code defined for element 8155 by UN/EDIFACT.

#### Segment Summary

	<b>Pos.</b>	<b>Seg.</b>		<b>Req.</b>	<b>Max.</b>	<b>Group:</b>
	<b>No.</b>	<b>ID</b>	<b>Name</b>	<b>Des.</b>	<b>Use</b>	<b>Repeat</b>
M	2580	EQD	Equipment Details	M	1	
R	2610	MEA	Measurements	C	1	
O	2630	SEL	Seal Number	C	6	

**Segment:** **EQD** **Equipment Details**  
**Position:** 2580 (Trigger Segment)  
**Group:** SG19-SG60  
**Level:** 2  
**Usage:** Mandatory  
**Max Use:** 1  
**Purpose:** A segment to specify equipment, and equipment size and type used in the transport.  
**Dependency Notes:**  
**Semantic Notes:**  
**Comments:**

**Notes:** This segment is to identify the transport equipment, its size/type and if it is full or empty.

If it is full, its presence in one occurrence of group 52 will be checked, given an error if absent.

If it is empty, its presence in one occurrence of group 52 will be checked, given an error if present.

If it is other than an ISO container then DE:8155 shall have the proper value from the standard code list associated with this element (displayed in the element).

If it is an ISO container then DE: 8155 shall have the ISO type according standard ISO 6346. If this code is unknown then place the proper value from standard code list associated with this element (displayed in the element).

Example: Container CGTU 200311/5, 20 ft, full (LCL)  
EQD+CN+CGTU2003115+21+++7'

Example: Container GSTU 000029/0, 40 ft General purpose (ISO 40GP), empty  
EQD+CN+GSTU0000290+40GP+++4'

Example: Trailer Z-53791, full  
EQD+TE+Z53791+14+++5'

**Data Element Summary**

<u>Data Element</u>	<u>Component Element</u>	<u>Name</u>	<u>Base Attributes</u>	<u>User Attributes</u>
8053		<b>EQUIPMENT QUALIFIER</b> Code identifying type of equipment. UN/EDIFACT code list for Data Element 8053.	<b>M an..3</b>	<b>M</b>
C237		<b>EQUIPMENT IDENTIFICATION</b> Marks (letters and/or numbers) identifying equipment used for transport such as a container.	<b>C</b>	<b>R</b>
	8260	<b>Equipment identification number</b> Marks (letters and/or numbers) which identify equipment e.g. unit load device.	<b>C an..17</b>	<b>R</b>

	<b>1131</b>	<b>Code list qualifier</b>	<b>C</b>	<b>an..3</b>	<b>X</b>
		Identification of a code list.			
	<b>3055</b>	<b>Code list responsible agency, coded</b>	<b>C</b>	<b>an..3</b>	<b>X</b>
		Code identifying the agency responsible for a code list.			
	<b>3207</b>	<b>Country, coded</b>	<b>C</b>	<b>an..3</b>	<b>X</b>
		Identification of the name of a country or other geographical entity as specified in ISO 3166.			
<b>C224</b>		<b>EQUIPMENT SIZE AND TYPE</b>	<b>C</b>		<b>D</b>
		Code and/or name identifying size and type of equipment used in transport. Code preferred.			
		This composite is used only when the equipment is a container (EQD:8053 = CN).			
	<b>8155</b>	<b>Equipment size and type identification</b>	<b>C</b>	<b>an..10</b>	<b>R</b>
		Coded description of the size and type of equipment e.g. unit load device.			
		In case of ISO container equipment (DE:8053=CN) and if its ISO type is known then send the Size/Type information according to ISO 6346 (2nd or 3rd edition).			
		Otherwise use UN/EDIFACT code list for Data Element 8155.			
	<b>1131</b>	<b>Code list qualifier</b>	<b>C</b>	<b>an..3</b>	<b>R</b>
		Identification of a code list.			
		102                      Size and type			
	<b>3055</b>	<b>Code list responsible agency, coded</b>	<b>C</b>	<b>an..3</b>	<b>R</b>
		Code identifying the agency responsible for a code list.			
		5                              ISO (International Organization for Standardization)			
		Use this code when DE:8155 contains the ISO 6346 code.			
		6                              UN/ECE (United Nations - Economic Commission for Europe)			
		Use this code when DE:8155 contains a code from the list associated with this Data Element.			
	<b>8154</b>	<b>Equipment size and type</b>	<b>C</b>	<b>an..35</b>	<b>X</b>
		Plain language description of the size and type of equipment e.g. unit load device.			
<b>8077</b>		<b>EQUIPMENT SUPPLIER, CODED</b>	<b>C</b>	<b>an..3</b>	<b>X</b>
		To indicate the party that is the supplier of the equipment.			
<b>8249</b>		<b>EQUIPMENT STATUS, CODED</b>	<b>C</b>	<b>an..3</b>	<b>X</b>
		Indication of the action related to the equipment.			
<b>8169</b>		<b>FULL/EMPTY INDICATOR, CODED</b>	<b>C</b>	<b>an..3</b>	<b>R</b>
		To indicate the extent to which the equipment is full or empty.			
		4                              Empty			
		For the Port of Leixões and Port of Sines, if the equipment is empty then its identification must be absent from any occurrence of group 52.			
		5                              Full			
		For the Port of Leixões and Port of Sines, if the equipment is full then its identification must be present in one occurrence of group 52.			

Common Platform - Manifest Message Format - Version 1.3j2

- |   |  |
|---|--|
| 7 | <p>Full, mixed consignment</p> <p>Indicates that the equipment is fully loaded, and includes a number LCL (Less Than Container Load) consignments.</p> <p>For the Port of Leixões and Port of Sines, if the equipment is full then its identification must be present in one occurrence of group 52.</p> |
| 8 | <p>Full, single consignment</p> <p>Indicates that the container is fully loaded with a single FCL (Full Container Load) consignment.</p> <p>For the Port of Leixões and the Port of Sines, if the equipment is full then its identification must be present in one occurrence of group 52.</p>           |



**Segment:** **MEA** Measurements  
**Position:** 2610  
**Group:** SG19-SG60  
**Level:** 3  
**Usage:** Conditional (Required)  
**Max Use:** 1  
**Purpose:** A segment to specify measurements, other than dimensions, associated with the equipment, such as weight.

**Dependency Notes:**

**Semantic Notes:**

**Comments:**

**Notes:** Example: Container with tare 2000 Kg.

MEA+WT+T+KGM:2000'

**Data Element Summary**

<u>Data Element</u>	<u>Component Element</u>	<u>Name</u>	<u>Base Attributes</u>	<u>User Attributes</u>
6311		<b>MEASUREMENT PURPOSE QUALIFIER</b> Specification of the purpose of the measurement. WT Weights	M an..3	M
C502		<b>MEASUREMENT DETAILS</b> Identification of measurement type.	C	R
	6313	<b>Property measured, coded</b> Specification of the property measured. T Tare weight Weight excluding goods and loose accessories.	C an..3	R
	6321	<b>Measurement significance, coded</b> Code specifying the significance of a measurement value.	C an..3	X
	6155	<b>Measurement attribute identification</b> Code used to specify non-discrete measurement values.	C an..17	X
	6154	<b>Measurement attribute</b> To specify non-discrete measurement values.	C an..70	X
C174		<b>VALUE/RANGE</b> Measurement value and relevant minimum and maximum tolerances in that order.	C	R
	6411	<b>Measure unit qualifier</b> Indication of the unit of measurement in which weight (mass), capacity, length, area, volume or other quantity is expressed. UN/ECE Recommendation 20 - Annex II KGM kilogram	M an..3	M
	6314	<b>Measurement value</b> Value of the measured unit.	C an..18	R
	6162	<b>Range minimum</b>	C n..18	X

Common Platform - Manifest Message Format - Version 1.3j2

	Minimum of a range.			
<b>6152</b>	<b>Range maximum</b>	<b>C</b>	<b>n..18</b>	<b>X</b>
	Maximum of a range.			
<b>6432</b>	<b>Significant digits</b>	<b>C</b>	<b>n..2</b>	<b>X</b>
	To specify the number of significant digits.			
<b>7383</b>	<b>SURFACE/LAYER INDICATOR, CODED</b>	<b>C</b>	<b>an..3</b>	<b>X</b>
	Code indicating the surface or layer of a product that is being described.			

**Segment:** **SEL** Seal Number  
**Position:** 2630  
**Group:** SG19-SG60  
**Level:** 3  
**Usage:** Conditional (Optional)  
**Max Use:** 6  
**Purpose:** A segment to identify seal and seal issuer associated with the equipment.  
**Dependency Notes:**  
**Semantic Notes:**  
**Comments:**  
**Notes:** Example: Carrier seal 6629290  
 SEL+6629290+CA'

**Data Element Summary**

<u>Data Element</u>	<u>Component Element</u>	<u>Name</u>	<u>Base Attributes</u>	<u>User Attributes</u>
9308		SEAL NUMBER The number of a custom seal or another seal affixed to the containers or other transport unit.	M an..10	M
C215		SEAL ISSUER Identification of the issuer of a seal on equipment either by code or by name.	C	O
	9303	Sealing party, coded Identification of the issuer of the seal number. UN/EDIFACT code list for Data Element 9303.	C an..3	O
	1131	Code list qualifier Identification of a code list.	C an..3	X
	3055	Code list responsible agency, coded Code identifying the agency responsible for a code list.	C an..3	X
	9302	Sealing party Clear text, representing the name of the issuer of the seal number.	C an..35	X
4517		SEAL CONDITION, CODED To indicate the condition of a seal.	C an..3	X

**Segment:** **UNT** Message Trailer  
**Position:** 2810  
**Group:**  
**Level:** 0  
**Usage:** Mandatory  
**Max Use:** 1  
**Purpose:** A service segment ending a message, giving the total number of segments in the message and the control reference number of the message.

**Dependency Notes:**

**Semantic Notes:**

**Comments:**

**Notes:** Example: 26 sent segments, reference 1357924680

UNT+26+1357924680'

**Data Element Summary**

<u>Data Element</u>	<u>Component Element</u>	<u>Name</u>	<u>Base Attributes</u>	<u>User Attributes</u>
0074		NUMBER OF SEGMENTS IN A MESSAGE Control count of number of segments in a message.	M n..6	M
0062		MESSAGE REFERENCE NUMBER Unique message reference assigned by the sender.	M an..14	M