

IFCSUM Forwarding and Consolidation Summary Message

Introduction:

A message to be used for consolidation purposes from a party arranging forwarding and transport services to the party for which the transport of the consolidated cargo is destined. The message can be used to exchange information concerning the consolidated cargo between forwarders, carriers and agents enabling those parties to handle the consignments included in this consolidation. In addition it can be used for a collection of consignments originating from one shipper for forwarding and transport services. In addition it can be used for an advice of insurance related to a consolidation of consignments if the insured is the party arranging forwarding and transport services.

Notes:

This guideline is a joint development between the Portuguese Port Authorities and Portuguese Customs. The focus is the cargo manifest message.

In general, the goal is to provide the definition of the IFCSUM Message Implementation Guideline (MIG) for the transmission to the Port Authorities system of the IFCSUM messages. This definition must be compatible with the data set and rules required by Portuguese Customs in the context of the SiMTeM project - Sistema Integrado de Meio de Transporte e Mercadorias, applied to maritime transport.

In this frame, the messages must comply with Customs MaritimeManifestInformation message (MMI). This guarantees that all elements for the MMI message are present (even if some syntax translation is required), and also includes elements for Port Authority.

This guideline was elaborated considering the following references:

- UN/EDIFACT D.21B IFCSUM
- ISO 6346 (2nd and 3rd editions) - Freight containers - Coding, identification and marking
- UN/ECE Recommendation 1 - United Nations Layout Key for Trade Documents (Doc. Ref. ECE/TRADE/137)
- UN/ECE Informative Annex to Recommendation 1 - United Nations Layout Key for Trade Documents (Doc. Ref. ECE/TRADE/270)
- UN/ECE Recommendation 7 - Numerical Representation of Dates, Time and Periods of Time (Doc. Ref. TRADE/CEFACT/2001/19)
- UN/ECE Recommendation 16 (3rd edition) - UN/LOCODE - Codes for Ports and Other Locations (Doc. Ref. ECE/TRADE/227) upgraded to 2003.2 version
- UN/ECE Recommendation 19 (2nd edition) - Codes for Modes of Transport (Doc. Ref. TRADE/CEFACT/2001/19)
- UN/ECE Recommendation 20 - Codes for Units of Measure Used in International Trade (Doc. Ref. TRADE/CEFACT/2001/20)
- UN/ECE Recommendation 21 - Codes for Types of Cargo, Packages and Packaging Materials Revision 2 (Doc. Ref. ECE/TRADE/211)
- UN/ECE Recommendation 21 - Codes for Types of Cargo, Packages and Packaging Materials Revision 4 to Annex V and Annex VI (Doc. Ref. TRADE/CEFACT/2002/)
- ITIGG: General Recommendations Version 2.1 March 2001 (Doc. Ref. 4/ITIGG/104/v.2.00)
- ITIGG: IFCSUM Principles and Rules for Implementation of Consignment Based Messages (Doc. Ref. D4/ITIGG/100/v2.9)
- SiMTeM - Via Marítima - Mensagens Externas - Operadores, v1.1, from Portuguese Customs.

The exchange process of this message is similar to the one implemented in Portugal between Shipping Agents/Economic Operators to Port Authorities systems and Customs SDS platform, since 2007. To recall:

- Shipping Agent/Economic Operator sends IFCSUM message to Port Authority.
- Port Authority validates and sends a CUSRES to Shipping Agent/Economic Operator.
- If the validation was successful then a MMI message is sent to Customs system.
- Customs validates and sends a MMR - MaritimeManifestResponse message (defined in another message implementation guideline) to the Port Authority system.
- Port Authority incorporates the message, and generates CUSRES to the Shipping Agents/Economic Operator passing Customs validation results.

In the context JUL and SiMTeM, the interpretation of the IFCSUM message is focused on the transport documents present in the message and not on the manifest itself. The manifest continues to have its own characteristics and properties. However its role as a full document is not applicable anymore. Now the role is to aggregate documents related with a vessel call and Customs vessel call id (Contramarca), by movement type (loading, discharge, transit on board). This brings granularity to the way the message is used and its different process stages. This change has two major consequences.

One is that some more entities are declared in the transport documents since a check against the header part of the document is very limited.

The other is with the usage of IFCSUM message itself. Instead of having the functions (in BGM segment as explain in the this segment notes) Original, Addition, Deletion, Change and Cancellation, only Original, Change and Deletion are available. Functions Original and Deletion keep their usual interpretation, but function Change will include a larger applicability since will include addition of new transport, deletion and changes to previously sent transport documents. Which situation is applied to each transport document is declared in the transport document itself, in a data element marked for this usage. This may allow an easier management of the message building because if additions, deletions or changes are made by the Shipping Agent/Economic Operator during the same user session, only one message needs to be send with the final result of the action, instead one message by each operation (add, delete, change) done.

Another change is that explicit need to express the finalization of the manifest is not to be done. Once a transport document is sent, it is available for complete evaluation independently of further changes it may have.

The need for Customs to send several response messages related with the same manifest message remains.

Notes to date/time elements. In JUL (Port Authorities system) and SiMTeM (Customs system) databases, date and time information are saved in UTC. For this reason, and because each IFCSUM message may be generated in different timezones, timezone information must be present in all date/time elements. See the examples in DTM segments.

Notes on entities data. Entities are identified by two alternative ways. A short form by providing the name and the EORI number of the entity. This number is provided by any EU Customs Office upon request. The long form is by providing the name and additional data of the location. The usage attribute and notes in segment NAD clarify. However, due to legislation, some type of entities need to have an EORI identifier. In these cases it should be provided.

Note on transport document unfolding process. In this context unfolding a document is the action that allows a Shipping Agent/Economic Operator to provide more detail data of a transport document, by segregating the document into other documents that are portions of the first, simultaneously keeping the segregated access to the detailed data. This action must obey to the following rules. One is that goods items or transport equipment in the one or more resulting documents, must be mentioned in the unfolded document, and the total quantities in the resulting documents must be equal to the quantity of the same nature in the unfolded document. The other rule is all resulting documents of an unfolding process must be present in the same message.

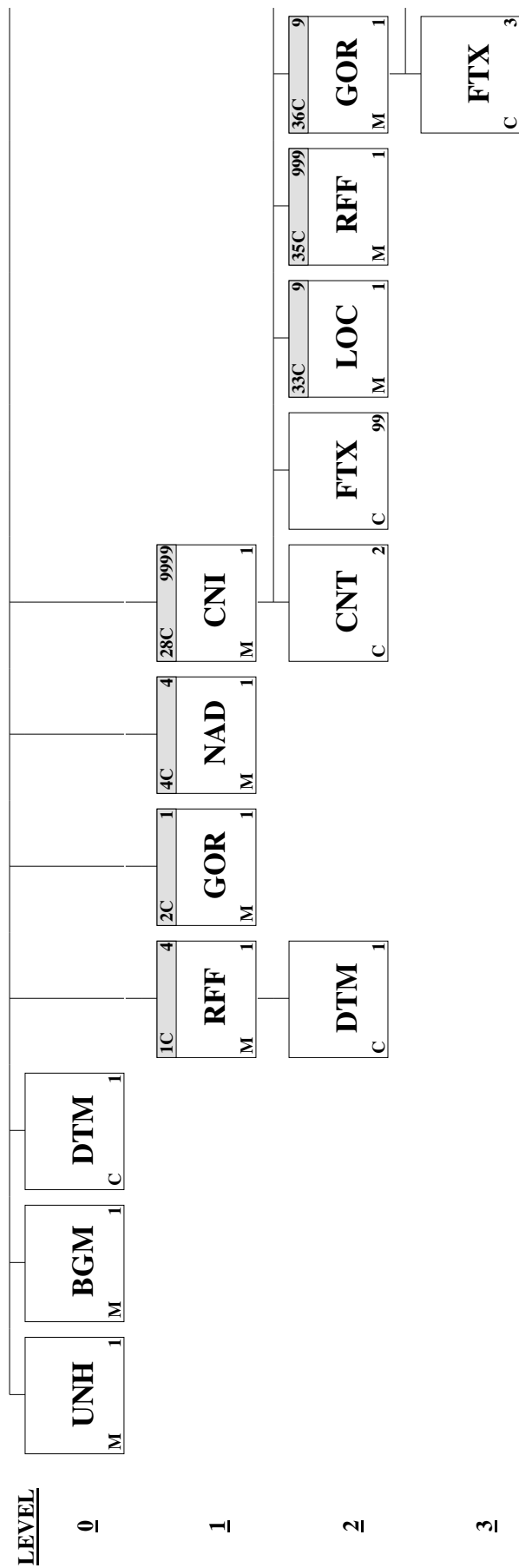
Usage indicators in this document follow ITIGG Recommendation D4/G44.

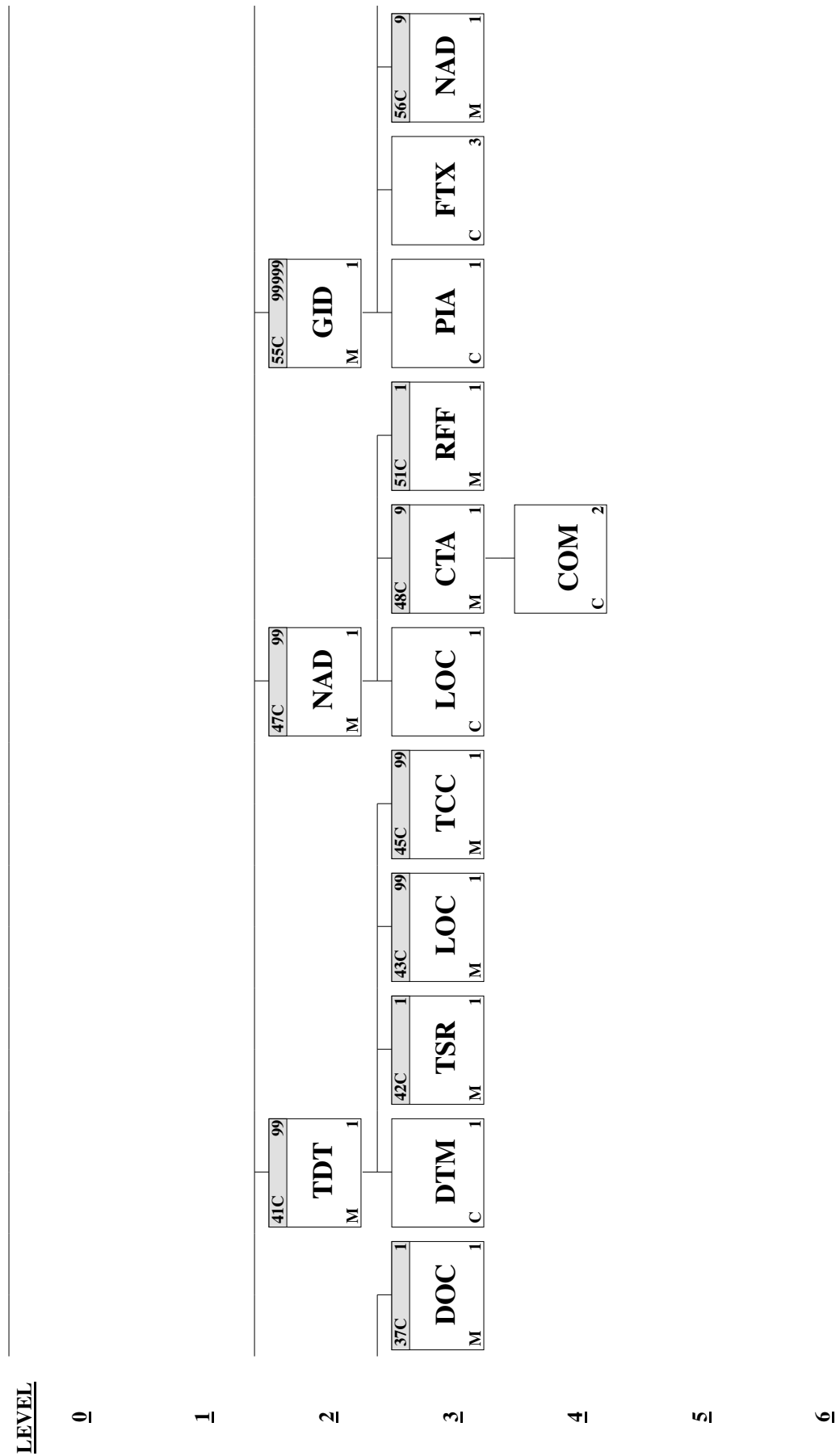
JUL / SiMTeM - Manifest Message Format - Version 0005

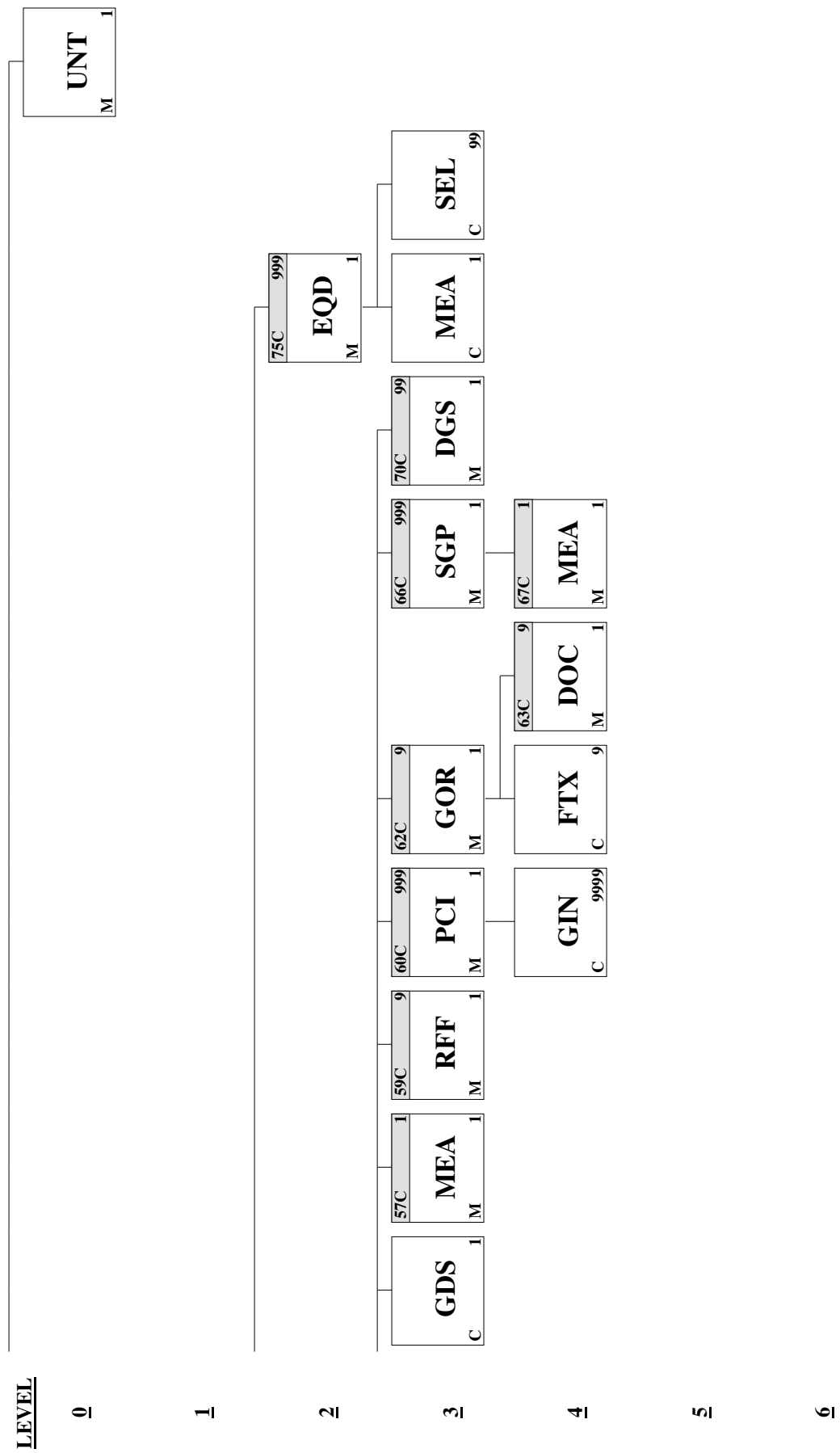
<u>Page No.</u>	<u>Pos. No.</u>	<u>Seg. ID</u>	<u>Name</u>	<u>Base Guide</u>	<u>User Status</u>	<u>Max.Use</u>	<u>Group Repeat</u>	<u>Notes and Comments</u>
8	00010	UNH	Message Header	M	M	1		
10	00020	BGM	Beginning of Message	M	M	1		
12	00030	DTM	Date/Time/Period	C	R	1		
	00090		Segment Group 1: RFF-DTM	C	R		4	
14	00100	RFF	Reference	M	M	1		
16	00110	DTM	Date/Time/Period	C	D	1		
	00120		Segment Group 2: GOR	C	R		1	
18	00130	GOR	Governmental Requirements	M	M	1		
	00210		Segment Group 4: NAD	C	R		4	
21	00220	NAD	Name and Address	M	M	1		
	01240		Segment Group 28: CNI-CNT-FTX -SG33-SG35-SG36-SG41-SG47-SG55 -SG75	C	D		9999	
26	01250	CNI	Consignment Information	M	M	1		
28	01390	CNT	Control Total	C	R	2		
30	01440	FTX	Free Text	C	R	99		
	01460		Segment Group 33: LOC	C	R		9	
35	01470	LOC	Place/Location Identification	M	M	1		
	01520		Segment Group 35: RFF	C	R		999	
39	01530	RFF	Reference	M	M	1		
	01550		Segment Group 36: GOR-FTX-SG37	C	D		9	
43	01560	GOR	Governmental Requirements	M	M	1		
45	01600	FTX	Free Text	C	O	3		
	01610		Segment Group 37: DOC	C	D		1	
49	01620	DOC	Document/Message Details	M	M	1		
	01840		Segment Group 41: TDT-DTM-SG42 -SG43-SG45	C	R		99	
54	01850	TDT	Transport Information	M	M	1		
58	01860	DTM	Date/Time/Period	C	D	1		
	01870		Segment Group 42: TSR	C	R		1	
60	01880	TSR	Transport Service Requirements	M	M	1		
	01900		Segment Group 43: LOC	C	R		99	
63	01910	LOC	Place/Location Identification	M	M	1		
	01960		Segment Group 45: TCC	C	O		99	
66	01970	TCC	Charge/Rate Calculations	M	M	1		
	02040		Segment Group 47: NAD-LOC-SG48 -SG51	C	R		99	
69	02050	NAD	Name and Address	M	M	1		
73	02060	LOC	Place/Location Identification	C	D	1		
	02080		Segment Group 48: CTA-COM	C	O		9	
76	02090	CTA	Contact Information	M	M	1		
77	02100	COM	Communication Contact	C	R	2		
	02220		Segment Group 51: RFF	C	D		1	
79	02230	RFF	Reference	M	M	1		
	02440		Segment Group 55: GID-PIA-FTX-SG56	C	O		99999	

JUL / SiMTeM - Manifest Message Format - Version 0005

-GDS-SG57-SG59-SG60-SG62-SG66 -SG70						
81	02450	GID	Goods Item Details	M	M	1
84	02520	PIA	Additional Product Id	C	D	1
87	02540	FTX	Free Text	C	R	3
	02550		Segment Group 56: NAD	C	O	9
91	02560	NAD	Name and Address	M	M	1
93	02580	GDS	Nature of Cargo	C	R	1
	02590		Segment Group 57: MEA	C	R	1
95	02600	MEA	Measurements	M	M	1
	02650		Segment Group 59: RFF	C	O	9
98	02660	RFF	Reference	M	M	1
	02680		Segment Group 60: PCI-GIN	C	O	999
101	02690	PCI	Package Identification	M	M	1
103	02720	GIN	Goods Identity Number	C	O	9999
	02790		Segment Group 62: GOR-FTX-SG63	C	D	9
106	02800	GOR	Governmental Requirements	M	M	1
108	02840	FTX	Free Text	C	O	9
	02850		Segment Group 63: DOC	C	O	9
111	02860	DOC	Document/Message Details	M	M	1
	02930		Segment Group 66: SGP-SG67	C	D	999
116	02940	SGP	Split Goods Placement	M	M	1
	02960		Segment Group 67: MEA	C	R	1
118	02970	MEA	Measurements	M	M	1
	03120		Segment Group 70: DGS	C	O	99
121	03130	DGS	Dangerous Goods	M	M	1
	03260		Segment Group 75: EQD-MEA-SEL	C	O	999
124	03270	EQD	Equipment Details	M	M	1
126	03300	MEA	Measurements	C	R	1
128	03320	SEL	Seal Number	C	O	99
129	03590	UNT	Message Trailer	M	M	1







Segment: **UNH** Message Header
Position: 00010
Group:
Level: 0
Usage: Mandatory
Max Use: 1
Purpose: A service segment starting and uniquely identifying a message. The message type code for the Forwarding and consolidation summary message is IFCSUM.
 Note: Forwarding and consolidation summary messages conforming to this document must contain the following data in segment UNH, composite S009:
 Data element 0065 IFCSUM 0052 D 0054 21B
 0051 UN

Dependency Notes:

Semantic Notes:

Comments:

Notes: Example: Message envelope number 9246801357, type IFCSUM, draft version/UN/Edifact Directory D.21B

UNH+9246801357+IFCSUM:D:21B:UN'

Data Element Summary

<u>Data Element</u>	<u>Component Element</u>	<u>Name</u>	<u>Base Attributes</u>	<u>User Attributes</u>
0062		MESSAGE REFERENCE NUMBER Unique message reference assigned by the sender.	M 1 an..14	M
S009		MESSAGE IDENTIFIER Identification of the type, version etc. of the message being interchanged.	M 1	M
	0065	Message type identifier Code identifying a type of message and assigned by its controlling agency. IFCSUM Forwarding and consolidation summary message A code to identify the forwarding and consolidation summary message.	M an..6	M
	0052	Message type version number Version number of a message type. D Draft version/UN/EDIFACT Directory Message approved and issued as a draft message (Valid for directories published after March 1993 and prior to March 1997). Message approved as a standard message (Valid for directories published after March 1997).	M an..3	M
	0054	Message type release number Release number within the current message type version number (0052). 21B Release 2021 - B Message approved and issued in the second 2021 release of the UNTDID (United Nations Trade Data Interchange Directory).	M an..3	M
	0051	Controlling agency Code identifying the agency controlling the specification, maintenance and publication of the message type. UN UN/CEFACT	M an..2	M

United Nations Centre for Trade Facilitation and Electronic Business (UN/CEFACT).

0057	Association assigned code	C	an..6	X
0068	COMMON ACCESS REFERENCE	C	1 an..35	X
S010	STATUS OF THE TRANSFER	C	1	X
	Statement that the message is one in a sequence of transfers relating to the same topic.			
0070	Sequence message transfer number	M	n..2	X
	Number assigned by the sender indicating that the message is an addition or change of a previously sent message relating to the same topic.			
0073	First/last sequence message transfer indication	C	a1	X
	Indication used for the first and last message in a sequence of the same type of message relating to the same topic.			

Segment: **BGM** Beginning of Message
Position: 00020
Group:
Level: 0
Usage: Mandatory
Max Use: 1
Purpose: A segment to indicate the beginning of the message and to transmit identifying number (e.g. Master B/L, Master AWB etc.), type, date and the function of the message.

Dependency Notes:

Semantic Notes:

Comments:

Notes:

As explained in the introductory notes, the usage of the message function code element is limited to three possibilities.

If the value is 9 (Original) then the message is the first of a chain of messages (even if no more messages are sent) related with the same vessel call and movement type (import, export, transit on board). This does not mean that all transport documents applicable are present. However, as a consequence, all transport documents are new.

If the value is 4 (Change) then the message is other than the first message of the chain and it is updating the set of transport documents. This action can be the addition of new documents, changes of existing documents, or removal of previous sent documents. What it is applicable to each transport document is signaled in a data element for the purpose.

If the value is 1 (Cancellation) then the message must be the last of the chain and implies the removal of all transport documents previous sent regardless when they were submitted. In this case there is no need to send data of the transport documents segment to group 28).

Example: Message number 45192399 referring a cargo manifest/set of transport documents updating information related with a previous message

BGM+785+45192399+4'

Data Element Summary

<u>Data Element</u>	<u>Component Element</u>	<u>Name</u>	<u>Base Attributes</u>	<u>User Attributes</u>
C002		DOCUMENT/MESSAGE NAME	C 1	R
		Identification of a type of document/message by code or name. Code preferred.		
	1001	Document name code	C an..3	R
		Code specifying the document name.		
		785 Cargo manifest		
		Listing of goods comprising the cargo carried in a means of transport or in a transport-unit. The cargo manifest gives the commercial particulars of the goods, such as transport document numbers, consignors, consignees, shipping marks, number and kind of packages and descriptions and quantities of the goods.		
	1131	Code list identification code	C an..17	X

	3055	Code list responsible agency code	C	an..3	X
	1000	Document name	C	an..35	X
C106		DOCUMENT/MESSAGE IDENTIFICATION	C	1	R
		Identification of a document/message by its number and eventually its version or revision.			
	1004	Document identifier	C	an..70	R
		To identify a document. Provides the identification of the message.			
	1056	Version identifier	C	an..9	X
	1060	Revision identifier	C	an..6	X
1225		MESSAGE FUNCTION CODE	C	1 an..3	R
		Code indicating the function of the message.			
	1	Cancellation			
		Message cancelling a previous transmission for a given transaction.			
		Cancel all the already transport documents of a manifest (in the Customs system) and the manifest itself (in the Port Authority system).			
		However, this cannot occur in the following situations:			
		a) at least one of the transport documents is in the state of closed by the Port Authority, since it was already subject to invoicing and statistical valuation;			
		b) at least one transport equipment or one goods item referred in one of the transport documents had a physical movement.			
		This a applies to the transport documents of the carrier identified in group 4 (NAD).			
		Group 28 (CNI) is not needed to be send in this context.			
	4	Change			
		Message containing items to be changed.			
		Use this function when it is not the first message of the manifest and a cancellation is not being requested. The complementary information describing what action is applicable to each transport document, it is provided in group 28 (CNI), segment FTX, element 4441 having element 4445 with qualifier BAR.			
		This will allow to identify which transport documents are being added (create), changed (update) or removed (annul) in the message with this function.			
	9	Original			
		Initial transmission related to a given transaction.			
		Use this function on the issue of the first message of a manifest, providing a first set of transport documents.			
	4343	RESPONSE TYPE CODE	C	1 an..3	X
	1373	DOCUMENT STATUS CODE	C	1 an..3	X
	3453	LANGUAGE NAME CODE	C	1 an..3	X

Segment: **DTM** Date/Time/Period
Position: 00030
Group:
Level: 0
Usage: Conditional (Required)
Max Use: 1
Purpose: A segment to specify date/time of the document/message.
Dependency Notes:
Semantic Notes:
Comments:
Notes:

The usage is to provide the date/time of the message generation.

Regard that timezone to the east of UTC should include the adopted EDIFACT escape character (?) in the value because of the presence of the plus (+) sign. This is also applicable during summer time when daylight saving time shift is applicable.

Example: The message was issued on 2022/10/09 at 14:30:21, Athens time
DTM+182:20221009143021?+0200:208'

Example: The message was issued on 2022/11/21 at 10:32:51, Buenos Aires time
DTM+182:20221121103251-0300:208'

Data Element Summary

<u>Data Element</u>	<u>Component Element</u>	<u>Name</u>	<u>Base Attributes</u>	<u>User Attributes</u>
C507		DATE/TIME/PERIOD	M 1	M
		Date and/or time, or period relevant to the specified date/time/period type.		
	2005	Date or time or period function code qualifier	M an..3	M
		Code qualifying the function of a date, time or period.		
		182 Issue date		
		Date when a document/message has been or will be issued.		
	2380	Date or time or period text	C an..35	R
		The value of a date, a date and time, a time or of a period in a specified representation.		
		According with UN/ECE Recommendation N.º 7.		
	2379	Date or time or period format code	C an..3	R
		Code specifying the representation of a date, time or period.		
		208 CCYYMMDDHHMMSSZHHMM		
		Calendar date including time with seconds, with Time Zone: C = Century, Y = Year; M = Month; D = Day; H = Hour; M = Minute, S = Seconds, Z = leading plus/minus sign, HHMM = difference to UTC in Hours and Minutes.		

Group: **RFF** Segment Group 1: Reference

Position: 00090

Group:

Level: 1

Usage: Conditional (Required)

Max Use: 4

Purpose: A group of segments containing references and constants which apply to the entire message.

Notes: This group is used to send the four possible references allowed at header level:

- Port Authority vessel call id
- Customs vessel call id (known as "Contramarca")
- Manifest id provided by the carrier/agent
- Reference to a previous message

This group must be send the number of times needed to send all the references that the carrier/agent is aware at the moment the document is send. At least the manifest id and Port Authority vessel call id must be present. So the group must occur twice, at least.

The Customs vessel call id is sent when known. In case the shipping agent hasn't provided this reference, the Port Authority will include it in the message send to Customs.

The reference to a previous message is only sent when the message function stated in data element BGM:1225, is not 9.The goal behind this usage is to provide a way to keep the correct chronological sequence of different messages related with the same document synchronized with the sender. This usage is based on ITIGG Recommendation D4/G4.

When qualifiers ACW or AFB are used in element RFF:1153 then segment DTM in this group must be sent.

For qualifier ACW the date in segment DTM should be the one that was present in segment DTM at top level of the previous message.

For qualifier AFB the date in segment DTM corresponds to the date of manifest. It is admissible this date to be the same as the date in segment DTM at top level, but cannot be posterior, after discounting timezone shift.

The manifest id provided by the carrier/agent and respective date, must be unchangeable and unique for each carrier/agent, independently of the number of messages associated with the manifest.

Segment Summary

	Pos. No.	Seg. ID	Name	Req. Des.	Max. Use	Group: Repeat
M	00100	RFF	Reference	M	1	
D	00110	DTM	Date/Time/Period	C	1	

Segment: **RFF** Reference
Position: 00100 (Trigger Segment)
Group: SG1
Level: 1
Usage: Mandatory
Max Use: 1
Purpose: A segment to express a reference which applies to the entire message.

Dependency Notes:

Semantic Notes:

Comments:

Notes:

When the reference is Customs vessel call id (DE:1153=AFM) then the reference value in DE:1154 must have the format defined by Customs. The current format is

- Customs office code: 3 digits
- Mode of transport code (based on UN/CEFACT Trade Facilitaion Recommendation 19 - Code for Modes of Transport): 1 digit
- Year: 4 digits
- Sequential number: 6 digits left padded with zeros

Example: Vessel call at Lisbon identified by PTLIS122001122

RFF+ATZ:PTLIS122001122'

Example: Customs vessel call id ("Contramarca") in Viana do Castelo 75012022000198

RFF+AFM:75012022000198'

Example: Manifest id given by carrier/agent is NBAVAD001

RFF+AFB:NBAVAD001'

Example: Previous message related with the manifest is identified by 6352145JK65

RFF+ACW:6352145JK65'

Data Element Summary

<u>Data Element</u>	<u>Component Element</u>	<u>Name</u>	<u>Base Attributes</u>	<u>User Attributes</u>
C506		REFERENCE	M 1	M
		Identification of a reference.		
	1153	Reference code qualifier	M an..3	M
		Code qualifying a reference.		
		ACW		Reference number to previous message
				Reference number assigned to the message which was previously issued (e.g. in the case of a cancellation, the primary reference of the message to be cancelled will be quoted in this element).
				The reference is the id that appeared in BGM:C106:1004 of the latest previous message of this same manifest. Used when BGM:1225 in {1,4}.
		AFB		Cargo manifest number

				[1037] Reference number assigned to a cargo manifest. The reference by which the carrier/agent knows the manifest.	
	AFM	Secondary Customs reference		A number that identifies the secondary customs reference. The reference is the Customs vessel call id (known as Contramarca).	
	ATZ	Ship's stay reference number		(1099) Reference number assigned by a port authority to the stay of a vessel in the port. The reference is the Port Authority vessel call id. The number is provided by the Port Authority system when the vessel call is declared/opened.	
1154	Reference identifier		C	an..70	R
	Identifies a reference.				
1156	Document line identifier		C	an..6	X
1056	Version identifier		C	an..9	X
1060	Revision identifier		C	an..6	X

Segment: **DTM** Date/Time/Period
Position: 00110
Group: SG1
Level: 2
Usage: Conditional (Dependent)
Max Use: 1
Purpose: A segment to indicate date and time relating to the reference.

Dependency Notes:

Semantic Notes:

Comments:

Notes:

The complete meaning of this date depends of the reference type in the previous segment RFF, stated in element RFF:1153. This segment must be sent when RFF:1153 is in {ACW, AFB}. Otherwise it will be ignored.

Regard that timezone to the east of UTC should include the adopted EDIFACT escape character (?) in the value because of the presence of the plus (+) sign. This is also applicable during summer time when daylight saving time shift is applicable.

Note that the date/time shall be adjusted with the timezone offset applied to the system issuing the message (IFCSUM) and not the offset provided by the system that initially provided the reference, regardless it could be the same.

Example: Date/time of the reference is 2022/09/10 11:31:47, Lisbon winter time

DTM+171:20220910113147?+0000:208'

Data Element Summary

<u>Data Element</u>	<u>Component Element</u>	<u>Name</u>	<u>Base Attributes</u>	<u>User Attributes</u>
C507		DATE/TIME/PERIOD	M 1	M
		Date and/or time, or period relevant to the specified date/time/period type.		
	2005	Date or time or period function code qualifier	M an..3	M
		Code qualifying the function of a date, time or period.		
		171 Reference date/time		
		Date/time on which the reference was issued.		
	2380	Date or time or period text	C an..35	R
		The value of a date, a date and time, a time or of a period in a specified representation.		
		According with UN/ECE Recommendation n.º 7.		
	2379	Date or time or period format code	C an..3	R
		Code specifying the representation of a date, time or period.		
		208 CCYYMMDDHHMMSSZHHMM		
		Calendar date including time with seconds, with Time Zone: C = Century, Y = Year; M = Month; D = Day; H = Hour; M = Minute, S = Seconds, Z = leading plus/minus sign, HHMM = difference to UTC in Hours and Minutes.		

Group: **GOR** Segment Group 2: Governmental Requirements
Position: 00120
Group:
Level: 1
Usage: Conditional (Required)
Max Use: 1
Purpose: A group of segments to give information about the current customs procedure under which the transport is moving or to indicate applicable governmental procedures related to import, export and transit of the voyage/flight or consolidation.

Notes: This group is to state the movement type (Load, Unload, Transit) of the transport documents present in the message. This means that all transport documents included in the message must be of the same movement type (import, export, transit on board).

Its usage replaces the need to use different codes in BGM:1001.

Segment Summary

	Pos.	Seg.		Req.	Max.	Group:
	<u>No.</u>	<u>ID</u>	<u>Name</u>	<u>Des.</u>	<u>Use</u>	<u>Repeat</u>
M	00130	GOR	Governmental Requirements	M	1	

Segment: **GOR** **Governmental Requirements**
Position: 00130 (Trigger Segment)
Group: SG2
Level: 1
Usage: Mandatory
Max Use: 1
Purpose: A segment to give information about the current customs procedure under which the transport is moving or to indicate applicable governmental procedures to import, export and transit of the voyage/flight or consolidation.

Dependency Notes:

Semantic Notes:

Comments:

Notes: Example: All transport documents refer to unload cargo.

GOR+2'

Data Element Summary

<u>Data Element</u>	<u>Component Element</u>	<u>Name</u>	<u>Base Attributes</u>	<u>User Attributes</u>
8323		TRANSPORT MOVEMENT CODE	C 1 an..3	R
		Code specifying the transport movement.		
	1	Export The transport movement is to export the goods from the country. Note that this term is understood in the wider context of outbound of goods and not under the strict Customs definition.		
	2	Import The transport movement is to import the goods into the country. Note that this term is understood in the wider context of inbound of goods and not under the strict Customs definition.		
	3	Transit The cargo is moving in transit through a country and will not become part of the commerce of that country. Note that this term is understood in the wider context of goods that remain on board the vessel.		
C232		GOVERNMENT ACTION	C 1	X
		Function: To indicate the requirement for a specific governmental action and/or procedure or which specific procedure is valid for a specific part of the transport and cross-border transactions. (Note the red portion as change in the segment description.).		
	9415	Government agency identification code	C an..3	X
		Code identifying a government agency.		
	9411	Government involvement code	C an..3	X
		Code indicating the requirement and status of governmental involvement.		
	9417	Government action code	C an..3	X
		Code specifying a type of government action such as inspection, detention, fumigation, security.		
	9353	Government procedure code	C an..3	X
		Code specifying a government procedure.		

C232	GOVERNMENT ACTION	C	1	X
	Function: To indicate the requirement for a specific governmental action and/or procedure or which specific procedure is valid for a specific part of the transport and cross-border transactions. (Note the red portion as change in the segment description.).			
9415	Government agency identification code	C	an..3	X
	Code identifying a government agency.			
9411	Government involvement code	C	an..3	X
	Code indicating the requirement and status of governmental involvement.			
9417	Government action code	C	an..3	X
	Code specifying a type of government action such as inspection, detention, fumigation, security.			
9353	Government procedure code	C	an..3	X
	Code specifying a government procedure.			
C232	GOVERNMENT ACTION	C	1	X
	Function: To indicate the requirement for a specific governmental action and/or procedure or which specific procedure is valid for a specific part of the transport and cross-border transactions. (Note the red portion as change in the segment description.).			
9415	Government agency identification code	C	an..3	X
	Code identifying a government agency.			
9411	Government involvement code	C	an..3	X
	Code indicating the requirement and status of governmental involvement.			
9417	Government action code	C	an..3	X
	Code specifying a type of government action such as inspection, detention, fumigation, security.			
9353	Government procedure code	C	an..3	X
	Code specifying a government procedure.			
C232	GOVERNMENT ACTION	C	1	X
	Function: To indicate the requirement for a specific governmental action and/or procedure or which specific procedure is valid for a specific part of the transport and cross-border transactions. (Note the red portion as change in the segment description.).			
9415	Government agency identification code	C	an..3	X
	Code identifying a government agency.			
9411	Government involvement code	C	an..3	X
	Code indicating the requirement and status of governmental involvement.			
9417	Government action code	C	an..3	X
	Code specifying a type of government action such as inspection, detention, fumigation, security.			
9353	Government procedure code	C	an..3	X
	Code specifying a government procedure.			

Group: **NAD** Segment Group 4: Name and Address
Position: 00210
Group:
Level: 1
Usage: Conditional (Required)
Max Use: 4
Purpose: A group of segments to identify a party and related contacts and references.
Notes: This group identifies the parties involved in the message interchanged. They are the sender (MS), the receiver (MR), the declarant (AE) of the data in the message, and the Carrier (CA) that this should be the same for all transport documents included in the manifest.

In the communication between the Shipping Agents/Economic Operators and Port Authorities, the message receiver (MR) is the Port Authority.

Except the Carrier, the parties must be identified only by its EORI number.

The inclusion of the message sender (NAD:3035='MS') and the message receiver (NAD:3035='MR') is to separate the business level from the technical issues. For instance, allow that the entity that is sending the document can be different from the one which is the originator of the document. The same applies to the receiver versus the destination.

Segment Summary

	Pos.	Seg.	Name	Req.	Max.	Group:
	<u>No.</u>	<u>ID</u>	<u>Name</u>	<u>Des.</u>	<u>Use</u>	<u>Repeat</u>
M	00220	NAD	Name and Address	M	1	

Segment: **NAD** Name and Address
Position: 00220 (Trigger Segment)
Group: SG4
Level: 1
Usage: Mandatory
Max Use: 1
Purpose: A segment to identify the party's name, address and function.

Dependency Notes:

Semantic Notes:

Comments:

Notes:

Entities can be identified by two alternative ways.

The short form requires only the usage of elements C082 and C080. The long form implies the usage of elements C080, C059, 3164, C819, 3251 and 3207 according to the usage attributes.

The exception is with entities with the qualifiers MS, MR an AE since in these cases element C080 is not needed.

Example: The declarant of the data in this message is identified by the EORI PT502154368

NAD+AE+PT502154368'

Example: The carrier is NV BOECKMAMS SHIPPING, from Antwerpen, Belgium, with office at Binnenvaartstraat, number 85, postal code 2000, having EORI BE0406308056

NAD+CA+BE0406308056++NV BOECKMAMS SHIPPING+Binnenvaartstraat::85+ANTWERPEN++2000+BE'

Data Element Summary

<u>Data Element</u>	<u>Component Element</u>	<u>Name</u>	<u>Base Attributes</u>	<u>User Attributes</u>
3035		PARTY FUNCTION CODE QUALIFIER	M 1 an..3	M
		Code giving specific meaning to a party.		
	AE	Declarant's agent/representative Any natural or legal person who makes a declaration to an official body on behalf of another natural or legal person, where legally permitted (CCC). If this qualifier is used then elements C080, C059, 3164, C819, 3251 and 3207 are not needed.		
	CA	Carrier [3126] Party undertaking or arranging transport of goods between named points.		
	MR	Message recipient A party to receive a message or messages. If this qualifier is used then elements C080, C059, 3164, C819, 3251 and 3207 are not needed.		
	MS	Document/message issuer/sender [3522] Issuer of a document and/or sender of a message.		

If this qualifier is used then elements C080, C059, 3164, C819, 3251 and 3207 are not needed.

C082	PARTY IDENTIFICATION DETAILS	C	1	R	
	Identification of a transaction party by code.				
	3039	Party identifier	M	an..35	M
	Code specifying the identity of a party.				
	EORI number of the entity previously issued by a EU Customs Office.				
C058	1131	Code list identification code	C	an..17	X
	3055	Code list responsible agency code	C	an..3	X
C080	NAME AND ADDRESS	C	1	X	
	Unstructured name and address: one to five lines.				
	3124	Name and address description	M	an..35	X
	Free form description of a name and address line.				
	3124	Name and address description	C	an..35	X
	Free form description of a name and address line.				
	3124	Name and address description	C	an..35	X
Free form description of a name and address line.					
C080	PARTY NAME	C	1	D	
	Identification of a transaction party by name, one to five lines. Party name may be formatted.				
	Use if NAD:3035=CA.				
	3036	Party name	M	an..70	M
	Name of a party.				
	Name of the Carrier.				
	3036	Party name	C	an..70	X
	3036	Party name	C	an..70	X
3036	Party name	C	an..70	X	
3036	Party name	C	an..70	X	
3045	Party name format code	C	an..3	X	
C059	STREET	C	1	D	
	Street address and/or PO Box number in a structured address: one to four lines.				
	Use if DE:3035=CA.				
	3042	Street and number or post office box identifier	M	an..256	M
	To identify a street and number and/or Post Office box number.				
Street name.					
3042	Street and number or post office box identifier	C	an..256	O	
To identify a street and number and/or Post Office box number.					
Street name additional line.					
3042	Street and number or post office box identifier	C	an..256	R	
To identify a street and number and/or Post Office box number.					

		Door number.			
3042	Street and number or post office box identifier	C	an..256	O	
		To identify a street and number and/or Post Office box number.			
		Postal box office.			
3164	CITY NAME	C	1 an..35	D	
		Name of a city.			
		Use if DE:3035=CA.			
C819	COUNTRY SUBDIVISION DETAILS	C	1	D	
		To specify a country subdivision, such as state, canton, county, prefecture.			
		Use if DE:3035=CA.			
3229	Country subdivision identifier	C	an..9	X	
1131	Code list identification code	C	an..17	X	
3055	Code list responsible agency code	C	an..3	X	
3228	Country subdivision name	C	an..70	R	
		Name of a country subdivision, such as state, canton, county, prefecture.			
3251	POSTAL IDENTIFICATION CODE	C	1 an..17	D	
		Code specifying the postal zone or address.			
		Use if DE:3035=CA.			
3207	COUNTRY IDENTIFIER	C	1 an..3	D	
		Identification of the name of the country or other geographical entity as defined in ISO 3166-1 and UN/ECE Recommendation 3.			
		Use if DE:3035=CA.			

Group:	CNI Segment Group 28: Consignment Information
Position:	01240
Group:	
Level:	1
Usage:	Conditional (Dependent)
Max Use:	9999
Purpose:	<p>A segment group to give information about all consignments included in a voyage/flight or consolidation. The segment group can be used in two different manners to serve different approaches to consolidate messages:</p> <ul style="list-style-type: none"> - Short form consolidation message <p>In this situation, single consignment based functional messages (e.g. booking and/or instruction messages) have been sent on a progressive basis between exchanging partners (e.g. freight forwarder on the export side to freight forwarder on the import side). When the loading of the vessel/aircraft or consolidation is complete the IFCSUM-message will be sent and will use the CNI- segments to identify the transport document/message number (e.g. bill of lading, air-way bill, etc.) of every consignment, the details of which have already been sent as separate single consignment based messages (e.g. booking and/or instruction messages) or which will be sent as separate single consignment based messages following the IFCSUM-message using the option of grouping with the UNG-service-segment in a transmission. When the carrier himself loads consignments in a container or ULD the segment SGP and/or TPL following the CNI can be used to indicate in which equipment specified in the EQD-group on top level and/or which means of transport specified in the TDT-group on top level the consignment is loaded. Thus the short form IFCSUM-message operates as a reconciliation and control statement.</p> <ul style="list-style-type: none"> - Extended form consolidation message <p>In this situation, the data for each individual consignment has NOT been sent to the receiving partner by means of single consignment based messages (e.g. booking and/or instruction messages) separate to the IFCSUM message. In these circumstances it is possible to include the details of each consignment into the IFCSUM-message. In that case the segment (group) SGP and TPL following the segment CNI will not be used. For every consignment the complete structure of a single consignment based message can be used starting with the segment CNI replacing the BGM. Thus the extended form IFCSUM-message has not the function of referencing but to show as full a set of consignment data as is necessary to meet the requirements of type of consolidation message being constructed, e.g. Cargo vs. Full Freight.</p>
Notes:	<p>This group is to provide data related with the transport documents under which the cargo is being transported into/from the port.</p> <p>See notes in element BGM:1225 to see when this group has to be send.</p> <p>The group allows the addition, updating and removal of transport documents from the set of documents that constitute the manifest. However there is no need to segregate these purposes in several messages. Except for the first message, with the original function, where all documents are added (since they are new), in the other further messages, with the change function, a mix of purposes can be send simultaneously.</p> <p>The purpose of the presence of the transport document in a message is stated in element SG28:FTX:4441, having SG28:FTX:4451 the value BAR.</p>

Due to syntax limitations, if more than 9999 must be reported then send the original message (BGM:1225=9) and change messages (BGM:1225=4) with the purpose having the addition value.

Somehow the transport document must be identified clearly. This implies that unique keys must exist. Being aware that there isn't an "universal" numbering system that would prevent different documents of having the same identification, the identification key is based on the Local Reference Number (see segment CNI notes).

Segment Summary

	Pos.	Seg.		Req.	Max.	Group:
	<u>No.</u>	<u>ID</u>	<u>Name</u>	<u>Des.</u>	<u>Use</u>	<u>Repeat</u>
M	01250	CNI	Consignment Information	M	1	
R	01390	CNT	Control Total	C	2	
R	01440	FTX	Free Text	C	99	
	01460		Segment Group 33: Place/Location Identification	C		9
	01520		Segment Group 35: Reference	C		999
	01550		Segment Group 36: Governmental Requirements	C		9
	01840		Segment Group 41: Transport Information	C		99
	02040		Segment Group 47: Name and Address	C		99
	02440		Segment Group 55: Goods Item Details	C		99999
	03260		Segment Group 75: Equipment Details	C		999

Segment: **CNI** **Consignment Information**
Position: 01250 (Trigger Segment)
Group: SG28
Level: 1
Usage: Mandatory
Max Use: 1
Purpose: A segment to indicate consignments included in the consolidation using the transport document/message number or to replace the segment BGM of a single consignment based message structure.

Dependency Notes:

Semantic Notes:

Comments:

Notes:

For Customs declarative purposes, each transport document must be identified by a unique identifier, known as Local Reference Number - LRN. This identifier is given by the entity that delivers the declaration, but it has to obey the following format:

- year, 2 digits;
- EORI, in Portugal means ISO 2 letter country code, plus VAT number with 9 digits;
- sequential number, 9 digits.

When the year changes, the sequence of the sequential number shall be restarted.

This is independent of the type of document or other identifiers given to it.

This guarantees the uniqueness identification of each document in the set of transport documents that constitute the manifest.

Element DE:1490 is of optional usage and it will not be used for uniqueness verification.

Example: Document issued by WEC Lines-Ibero Portugal, Lda, in 2022, with the sequence providing number 6842

CNI++22PT513980059000006842'

Data Element Summary

<u>Data Element</u>	<u>Component Element</u>	<u>Name</u>	<u>Base Attributes</u>	<u>User Attributes</u>
1490		CONSOLIDATION ITEM NUMBER To specify a consignment within a consolidation.	C 1 n..5	O
C503		DOCUMENT/MESSAGE DETAILS Identification of document/message by number, status, source and/or language.	C 1	R
	1004	Document identifier To identify a document. Local Reference Number provided by the carrier/agent to the transport document according to Customs format.	C an..70	R
	1373	Document status code	C an..3	X
	1366	Document source description	C an..70	X

	3453	Language name code	C	an..3	X
	1056	Version identifier	C	an..9	X
	1060	Revision identifier	C	an..6	X
1312		CONSIGNMENT LOAD SEQUENCE IDENTIFIER	C	1 n..4	X

Segment: **CNT** Control Total
Position: 01390
Group: SG28
Level: 2
Usage: Conditional (Required)
Max Use: 2
Purpose: A segment to specify totals for a consignment.

Dependency Notes:

Semantic Notes:

Comments:

Notes:

One usage of this segment is to declare the total gross mass of the goods items declared in the transport document, in Kilograms.

Although the element 6066 allows 18 digits, only a maximum of 16 digits can be used. In case decimal digits need to be send, then a maximum of 6 are allowed and the amount needed must be discounted from the integer part of the number, in order to keep the maximum of 16 digits. The decimal mark can be the full stop (.) or comma (,) and don't count for the number size according to EDIFACT rules.

Another usage is to provide the number of seals present in the consignment. In this case do not use decimal mark since it is a number of objects that is being stated.

Example: The goods in this transport document have a total gross weight of 37.500.000,00 Kg

CNT+7:37500000,00:KGM'

Example: The goods in this transport document have a total gross weight of 37,0068 Kg

CNT+7:37,0068:KGM'

Example: In the consignment there are ten seals

CNT+61:10:C62'

Data Element Summary

<u>Data Element</u>	<u>Component Element</u>	<u>Name</u>	<u>Base Attributes</u>	<u>User Attributes</u>
C270		CONTROL	M 1	M
		Control total for checking integrity of a message or part of a message.		
	6069	Control total type code qualifier	M an..3	M
		Code qualifying the type of control of hash total.		
		7 Total gross weight		
		Code to indicate total gross weight of a consignment.		
		61 Number of affixed seals		
		To specify the number of seals affixed.		
	6066	Control total quantity	M n..18	M
		To specify the value of a control quantity.		
		If DE:6069 = 7 then this is the value of the total gross weight.		

If DE:6069 = 61 then this is number of seals.

6411	Measurement unit code	C	an..8	R
	Code specifying the unit of measurement.			
	C62			
	KGM			Kilogram

Segment: **FTX** Free Text
Position: 01440
Group: SG28
Level: 2
Usage: Conditional (Required)
Max Use: 99
Purpose: A segment to specify free form or processable supplementary information, such as status of transport, remarks to be printed on the transport documents (where required), consignment remarks, insurance instructions, etc., or any other additional information.

Dependency Notes:

Semantic Notes:

Comments:

Notes:

This segment is used to provide diverse complementary information related with the transport document. Note that "complementary" does not mean "optional". And "diverse" means that is grouped in categories, each one with defined boundaries.

The category being reported in a particular moment is identified by the qualifier in element 4451, and they are:

- Purpose/action being made with the transport document. As explained in the introductory notes of this MIG, the transport documents in a single message can be in different situations; new documents, or existing documents being updated or existing documents being removed. This category is identified by qualifier BAR. This category is required.

- Justification is to provide text for Customs purposes, mostly on document update or removal. This category is identified by qualifier CUS.

- Transport contract remarks allow the inclusion of particular conditions expressed in the transport document. This category is identified by qualifier BLR.

- Additional information is applicable to situations when the declarant pretends to provide other data associated with the transport document in the Customs context. This category is identified by qualifier ACB. One of this data is related with export of goods. Everytime the goods in this segment group are declared in an export customs declaration (SG02:GOR:8323='1'), it must be stated if they are the total, just a part or the rest of what is referenced on that declaration. This fact is stated in this segment having element C107:4441 with code 'T' for total, 'P' for part and 'R' for rest. However if nothing is declared, the default understanding it that the goods correspond to the total.

Each category implies its own segment usage in terms of the elements use, according to the notes in each element.

Example: The transport document is new. It is the first time it is mentioned in this manifest.

FTX+BAR++9'

Example: Additional information related with Article 18 of Union Customs Code, indicating 22PT251533

FTX+ACB++20300+22PT251533'

Example: Justification related with the transport document referring "Relativo ao documento em referência da situação pendente."

FTX+CUS+++Relativo ao documento em referência da situação pendente.'

Example: Goods being exported under this document of transport are part of a Customs declaration

FTX+ACB++P'

Data Element Summary

<u>Data Element</u>	<u>Component Element</u>	<u>Name</u>	<u>Base Attributes</u>	<u>User Attributes</u>
4451		TEXT SUBJECT CODE QUALIFIER Code qualifying the subject of the text. Business Rules: Variable Name:28FTX4451Qual ACB Additional information (4270) The text contains additional information. BAR Processing Instructions Instructions for processing. BLR Transport contract document remark [4244] Remarks concerning the complete consignment to be printed on the transport document. Synonym: Bill of Lading remark. CUS Customs declaration information (4034) Note contains customs declaration information.	M 1 an..3	M
4453		FREE TEXT FUNCTION CODE	C 1 an..3	X
C107		TEXT REFERENCE Coded reference to a standard text and its source. Use if DE:4451 in {ACB, BAR}.	C 1	D
	4441	Free text description code Code specifying free form text. Business Rules: 1. If 28FTX4451Qual EQ 'BAR', then use Application Value List 'ActionDocTran' 1 Cancel Only if DE:4451=BAR 4 Change Only if DE:4451=BAR 9 Create Only if DE:4451=BAR 00100 Simplified Authorisation Only if DE:4451=ACB 00700 AA Only if DE:4451=ACB 00800 AA MPC	M an..17	M

		Only if DE:4451=ACB			
	00900	IT			
		Only if DE:4451=ACB			
	01000	Diplomatic goods - inspection exempted			
		Only if DE:4451=ACB			
	10600	Unkown receiver			
		Only if DE:4451=ACB			
	20100				
		Only if DE:4451=ACB			
	20200				
		Only if DE:4451=ACB			
	20300	Export			
		Only if DE:4451=ACB			
	30300	E-U			
		Only if DE:4451=ACB			
	30500	Exit Customs Office			
		Only if DE:4451=ACB			
	30600	Unkown receiver			
		Only if DE:4451=ACB			
	30700	INF3			
		Only if DE:4451=ACB			
	40100	Valid higher limit of the goods EU status proof period			
		Only if DE:4451=ACB			
	P	Part			
		Only if DE:4451=ACB			
	R	Rest			
		Only if DE:4451=ACB			
	T	Total			
		Only if DE:4451=ACB			
C108	1131	Code list identification code	C	an..17	X
	3055	Code list responsible agency code	C	an..3	X
		TEXT LITERAL	C	1	D
		Free text; one to five lines.			
		Not used if DE:4451 = BAR, nor if DE:4451 = ACB and DE:4441 in {T, P, R}.			
	4440	Free text	M	an..512	M
	Free form text.				
	If DE:4451=ACB then this element is to provide the additional information related with the context expressed in DE:4441.				
	If DE:4451=CUS then this element should contain the justification text.				
	If DE:4451=BLR then this element and all other 4451 elements are used to contain the transport document remarks.				
4440	Free text	C	an..512	O	
	Free form text.				
4440	Free text	C	an..512	O	
	Free form text.				

4440	Free text Free form text.	C	an..512	O
4440	Free text Free form text.	C	an..512	O
3453	LANGUAGE NAME CODE	C	1 an..3	X
4447	FREE TEXT FORMAT CODE	C	1 an..3	X

Group: **LOC** Segment Group 33: Place/Location Identification
Position: 01460
Group: Segment Group 28 (Consignment Information) Conditional (Dependent)
Level: 2
Usage: Conditional (Required)
Max Use: 9
Purpose: A group of segments to specify locations and related date(s)/time(s) which apply to the entire consignment, e.g. place of transshipment.
Notes: This group has three purposes.

One is to identify Customs Offices that have interaction with the movement of the goods under this transport contract. The Customs Clearance Location is required. The other Customs offices depend on the cargo movement or other Customs specific requirements.

Another it is to provide information of the places/ports related with the transport contract. The places of loading and unloading depend on the cargo movement.

Finally it is to provide information on the warehouse for Customs purposes, like goods verification. Depends on Customs requirements.

Segment Summary

	Pos.	Seg.		Req.	Max.	Group:
	<u>No.</u>	<u>ID</u>	<u>Name</u>	<u>Des.</u>	<u>Use</u>	<u>Repeat</u>
M	01470	LOC	Place/Location Identification	M	1	

Segment: **LOC** Place/Location Identification
Position: 01470 (Trigger Segment)
Group: SG28-SG33
Level: 2
Usage: Mandatory
Max Use: 1
Purpose: A segment to identify a location applying to the entire consignment.

Dependency Notes:

Semantic Notes:

Comments:

Notes:

Example: Supervising Customs Office is Alfândega do Freixieiro.

LOC+22+PT000284'

Example: Place of loading is Leixões.

LOC+9+PTLEI::6'

Example: Final port of discharge is Ban Don, Thailand, identified by country and name

LOC+170+TH::5:Ban Don'

Example: Public customs warehouse type III identified by 58426.

LOC+281+58426+T'

Data Element Summary

<u>Data Element</u>	<u>Component Element</u>	<u>Name</u>	<u>Base Attributes</u>			<u>User Attributes</u>
3227		LOCATION FUNCTION CODE QUALIFIER	M	1	an..3	M
		Code identifying the function of a location.				
	9	Place of loading				
		[3334] Seaport, airport, freight terminal, rail station or other place at which the goods (cargo) are loaded on to the means of transport being used for their carriage.				
	11	Place of discharge				
		[3392] Seaport, airport, freight terminal, rail station or other place at which goods are unloaded from the means of transport having been used for their carriage.				
	22	Customs clearance location				
		[3080] Place at which Customs clearance should or has taken place.				
	42	Consignment exit customs office location				
		[3097] To identify the customs office at which the goods leave or are intended to leave the customs territory of despatch.				
	76	Original port of loading				
		(3099) The port where the goods were first loaded on a vessel.				
	118	Customs office of departure				
		Customs office at which a Customs transit operation commences (CCC).				

	122	Customs office of destination Customs office where the goods are to be cleared (CCC).			
	170	Final port of discharge Last port at which cargo is unloaded from a vessel before the cargo is moved to a place of delivery or destination.			
	281	Bonded warehouse A building or other secured area in which dutiable goods may be stored, manipulated, or undergo manufacturing operations without payment of duty.			
C517		LOCATION IDENTIFICATION	C	1	R
		Identification of a location by code or name.			
	3225	Location identifier	C	an..35	R
		To identify a location. If DE:3227 in {22, 42, 118, 122} then the value is Customs Office identifier. If DE:3227=281 then the value is an identifier of a warehouse. Otherwise the value is the UN/Locode or country code according to ISO 3166-1 alpha-2.			
	1131	Code list identification code	C	an..17	X
	3055	Code list responsible agency code	C	an..3	D
		Code specifying the agency responsible for a code list. Use if DE:3227 in {9, 11, 76, 170}.			
	5	ISO (International Organization for Standardization) International Organization of Standardization. To use if DE:3225 has a country code.			
	6	UN/ECE (United Nations - Economic Commission for Europe) United Nations Economic Commission for Europe. To use if DE:3225 has a UN/Locode.			
	3224	Location name	C	an..256	D
		Name of the location. Must be use if DE:3225 contains a country code.			
C519		RELATED LOCATION ONE IDENTIFICATION	C	1	D
		Identification the first related location by code or name. Use if DE:3227=281.			
	3223	First related location identifier	C	an..35	R
		To identify a first related location. This element identifies the type or warehouse for Customs purposes.			
	R	Public customs warehouse type I			
	S	Public customs warehouse type II			
	T	Public customs warehouse type III			
	U	Private customs warehouse			
	V	Storage facilities for the temporary storage of goods			
	Y	Non-customs warehouse			
	Z	Free zone			
	1131	Code list identification code	C	an..17	X
	3055	Code list responsible agency code	C	an..3	X

	3222	First related location name	C	an..70	X
C553		RELATED LOCATION TWO IDENTIFICATION	C	1	X
		Identification of second related location by code or name.			
	3233	Second related location identifier	C	an..35	X
		To identify a second related location.			
	1131	Code list identification code	C	an..17	X
		Code identifying a user or association maintained code list.			
	3055	Code list responsible agency code	C	an..3	X
		Code specifying the agency responsible for a code list.			
	3232	Second related location name	C	an..70	X
		Name of the second related location.			
5479		RELATION CODE	C	1 an..3	X

Group: **RFF** Segment Group 35: Reference
Position: 01520
Group: Segment Group 28 (Consignment Information) Conditional (Dependent)
Level: 2
Usage: Conditional (Required)
Max Use: 999
Purpose: A group of segments containing a reference and constants which apply to the entire consignment.
Notes: This group is to provide references of different nature.

One nature is transport document identification provided by the issuer of the document. The applicable qualifiers to use in element RFF:1153 are AEW, BH, BM, HWB, MB and CN (see note below on unfolding process).

Another nature is to provide the identification of the goods shipment under the transport document. In this case means that the identification applies to all goods described in the transport document. The applicable qualifier to use in element RFF:1153 in UCN.

A third nature is about references provided by Customs associated with the document itself or other documents/declarations related with the document. The applicable qualifiers to use in element RFF:1153 are AVX, ABT, AEI.

A fourth nature is to identify authorisations of Customs nature that can be applied to the movement of all goods items in the transport documents. The applicable qualifiers to use in element RFF:1153 are AFB (only in a future time), Z02, Z03, Z04.

A fifth nature is to give special circumstances indication related with Customs context. The applicable qualifier to use in element RFF:1153 is Z01.

Note on the authorisations. The group allows to indicate an authorisation type and identifier that can allow some processing simplification to the transport document and declarations that can be derived from it. Except for regular liner services, authorisations must be supported/proofed by supporting documents. The type and identification of these documents should be present in group 37 (DOC).

Note of the transport documents unfolding process. In this scenario, on referencing the transport document being unfolded, two occurrences of this group must exist to identify the unfolded document. One with the identification of the unfolded document provided by the Shipping Agent/Economic Operator (RFF:1153=CN), the other with the identification of the unfolded document provided identification by Customs (RFF:1153=AEI).

Note on the special circumstances indication. The occurrence of the group can be used for the economic operator to inform the type of Customs declaration is being pretended to be submitted. This is done by using on of the codes listed in DE:1154.

Segment Summary

	<u>Pos.</u>	<u>Seg.</u>	<u>Name</u>	<u>Req.</u>	<u>Max.</u>	<u>Group:</u>
	<u>No.</u>	<u>ID</u>		<u>Des.</u>	<u>Use</u>	<u>Repeat</u>
M	01530	RFF	Reference	M	1	

Segment: **RFF** Reference
Position: 01530 (Trigger Segment)
Group: SG28-SG35
Level: 2
Usage: Mandatory
Max Use: 1
Purpose: A segment to express a reference which applies to the entire consignment such as: the document/message number that is to be updated by this very message (according to data element 1225 Message function code in segment BGM), booking reference, order number, insurance contract, etc.

Dependency Notes:

Semantic Notes:

Comments:

Notes:

Example: Document number provided by Customs is
 PTLIS040120221234561234A12345

RFF+ABT:PTLIS040120221234561234A12345'

Example: Main reference number is 22PT123456789012U1

RFF+AVX:22PT123456789012U1'

Example: Bill of Lading number KLTM0752286

RFF+BM:KLTM0752286'

Example: EU Customs authorised issuer status identifier is PT AEOC
 20190121905

RFF+Z04:PT AEOC 20190121905'

Example: Express consignments in the context of exit summary declarations

RFF+Z01:A20'

Data Element Summary

<u>Data Element</u>	<u>Component Element</u>	<u>Name</u>	<u>Base Attributes</u>	<u>User Attributes</u>
C506		REFERENCE	M 1	M
		Identification of a reference.		
	1153	Reference code qualifier	M an..3	M
		Code qualifying a reference.		
	ABT	Goods declaration document identifier, Customs [1426] Reference number, assigned or accepted by Customs, to identify a goods declaration.		
		The usage of this qualifier means that the value in DE:1154 is a number provided by Customs as a result of the previous creation of the transport document in Customs system.		
		This value must be send when the transport document is being updated or removed (annul).		
	AEI	Registration number of previous Customs declaration		

	<p>Registration number of the Customs declaration lodged for the previous Customs procedure.</p> <p>This qualifier indicates that the reference is identifying a transport document is being unfolded, using the reference given by Customs when the document was originally submitted.</p> <p>In this case, another occurrence of the RFF segment must exist in the message with qualifier CN in DE:1153.</p>
AEW	<p>Empty container bill number</p> <p>Reference number assigned to an empty container bill, see: 1001 = 708.</p> <p>The value in DE:1154 is the reference to the business transport document.</p> <p>This qualifier is to indicate that the transport document refers to empty transport equipment being transported only for reposition purposes.</p>
AFB	<p>Cargo manifest number</p> <p>[1037] Reference number assigned to a cargo manifest.</p> <p>This qualifier is a type of Customs authorisation. Only usable in a future date to be defined.</p>
AVX	<p>Movement reference number</p> <p>Number assigned by customs referencing receipt of an Entry Summary Declaration.</p> <p>The value in DE:1154 must be the Main Reference Number (MRN) provided by Customs system on the previous creation of the document. If this reference was provided then it must be present when the transport document is being updated or removed (annul).</p>
BH	<p>House bill of lading number</p> <p>[1039] Reference number assigned to a house bill of lading.</p> <p>The value in DE:1154 is the reference to the business transport document.</p>
BM	<p>Bill of lading number</p> <p>Reference number assigned to a bill of lading, see: 1001 = 705.</p> <p>The value in DE:1154 is the reference to the business transport document.</p>
CN	<p>Carrier's reference number</p> <p>Reference number assigned by carrier to a consignment.</p> <p>This qualifier states that the value in DE:1154 is the identifier provided by the Carrier/Agent of a transport document that is being unfolded.</p> <p>In this case, another occurrence of the RFF segment must exist in the message with qualifier AEI in DE:1153.</p>
HWB	<p>House waybill number</p> <p>Reference number assigned to a house waybill, see: 1001 = 703.</p> <p>The value in DE:1154 is the reference to the business transport document.</p>
MB	<p>Master bill of lading number</p>

		Reference number assigned to a master bill of lading, see: 1001 = 704.		
		The value in DE:1154 is the reference to the business transport document.		
	UCN	Unique consignment reference number [1202] Unique reference identifying a particular consignment of goods. Synonym: UCR, UCRN.		
		The value in DE:1154 contains a reference given by an interested party to the shipment.		
	Z01	EU Customs specific circumstance indicator		
	Z02	EU Customs regular line service request/authorisation This qualifier is a type of Customs authorisation.		
	Z03	EU Customs usage of Electronic Transport Document request/authorisation This qualifier is a type of Customs authorisation.		
	Z04	EU Customs authorised issuer status request/authorisation This qualifier is a type of Customs authorisation.		
1154	Reference identifier		C	an..70 R
		Identifies a reference.		
		When DE:1153=Z01 then the value is from EU NCTS Codelist 296 (CL296).		
	A20	Exit summary declaration - Express consignments Only if DE:1153 = Z01		
	G4	Temporary storage declaration Only if DE:1153 = Z01		
	G5	Arrival notification in case of movement of goods under temporary storage Only if DE:1153 = Z01		
1156	Document line identifier		C	an..6 X
1056	Version identifier		C	an..9 X
1060	Revision identifier		C	an..6 X

Group: **GOR** Segment Group 36: Governmental Requirements
Position: 01550
Group: Segment Group 28 (Consignment Information) Conditional (Dependent)
Level: 2
Usage: Conditional (Dependent)
Max Use: 9

Purpose: A group of segments to identify customs and other governmental procedures and required documents.

Notes: One usage of this group is related with group 35 (RFF). Its purpose is to provide the type and identification of supporting documents (documents that support the fulfill of a Declaration of Temporary Storage/Document of Transport, SG36:FTX:4451=AVD and SG36:FTX:4440=SD, the reference is in SG37:DOC) or previous documents (when there is an obligation to submit a Summary Entry Declaration for a shipment, the Main Reference number of the Summary Entry Declaration is indicated as previous document of a Declaration of Temporary Storage, SG37:DOC:1001=355), exclusively for Customs purposes and regulated by Customs requirements depending on the declarative situations.

Note that when a previous document is being referenced, then an identifier to a goods item in that previous document must be given (value in SG36:FTX first 4440, using SG36:FTX:4451=Z01).

Another usage is to provide a declaration type. These declarations depend on the authorisation type that is expressed in the transport document (see SG35 (RFF) notes). The situations of applicability are to identify a Cargo Manifest (SG35:RFF:1153=AFB, only in a future time), to identify a electronic transport document request/authorisation (SG35:RFF:1153=Z03) or to identify an authorised issuer status request/authorisation (SG35:RFF:1153=Z04). Data of these references is to be provided in group 37 (DOC).

This group is also used to provide an additional declaration type by using segment FTX (SG36:FTX:4451=CUS) in the group. This is only applicable if the authorisation expressed is of usage of electronic transport document request/authorisation (SG35:RFF:1153=Z03).

Other usage is to provide additional references to other transport documents (SG36:FTX:4451=AVD and SG36:FTX:4440=AR, the reference is in SG37:DOC).

The GOR segment must be used for syntax purposes only, otherwise it is formally unable the usage of group 37 or segment FTX.

Segment Summary

	Pos.	Seg.	Name	Req.	Max.	Group:
	No.	ID		Des.	Use	Repeat
M	01560	GOR	Governmental Requirements	M	1	
O	01600	FTX	Free Text	C	3	
	01610		Segment Group 37: Document/Message Details	C		1

Segment: **GOR** **Governmental Requirements**
Position: 01560 (Trigger Segment)
Group: SG28-SG36
Level: 2
Usage: Mandatory
Max Use: 1
Purpose: A segment to indicate applicable governmental procedures related to import, export and transport of the goods.

Dependency Notes:

Semantic Notes:

Comments:

Notes: This segment is used for syntax purposes and compliance with the EDIFACT rules. The element 8323 is required to formally guarantee the existence of the segment GOR.

Example: Just comply with EDIFACT rules

GOR+Z01'

Data Element Summary

<u>Data Element</u>	<u>Component Element</u>	<u>Name</u>	<u>Base Attributes</u>			<u>User Attributes</u>
8323		TRANSPORT MOVEMENT CODE	C	1	an..3	R
		Code specifying the transport movement.				
		Z01 Dummy				
		For syntax purposes only.				
C232		GOVERNMENT ACTION	C	1		X
		Function: To indicate the requirement for a specific governmental action and/or procedure or which specific procedure is valid for a specific part of the transport and cross-border transactions. (Note the red portion as change in the segment description.).				
	9415	Government agency identification code	C		an..3	X
		Code identifying a government agency.				
	9411	Government involvement code	C		an..3	X
		Code indicating the requirement and status of governmental involvement.				
	9417	Government action code	C		an..3	X
		Code specifying a type of government action such as inspection, detention, fumigation, security.				
	9353	Government procedure code	C		an..3	X
		Code specifying a government procedure.				
C232		GOVERNMENT ACTION	C	1		X
		Function: To indicate the requirement for a specific governmental action and/or procedure or which specific procedure is valid for a specific part of the transport and cross-border transactions. (Note the red portion as change in the segment description.).				
	9415	Government agency identification code	C		an..3	X
		Code identifying a government agency.				
	9411	Government involvement code	C		an..3	X

		Code indicating the requirement and status of governmental involvement.			
	9417	Government action code	C	an..3	X
		Code specifying a type of government action such as inspection, detention, fumigation, security.			
	9353	Government procedure code	C	an..3	X
		Code specifying a government procedure.			
C232		GOVERNMENT ACTION	C	1	X
		Function: To indicate the requirement for a specific governmental action and/or procedure or which specific procedure is valid for a specific part of the transport and cross-border transactions. (Note the red portion as change in the segment description.).			
	9415	Government agency identification code	C	an..3	X
		Code identifying a government agency.			
	9411	Government involvement code	C	an..3	X
		Code indicating the requirement and status of governmental involvement.			
	9417	Government action code	C	an..3	X
		Code specifying a type of government action such as inspection, detention, fumigation, security.			
	9353	Government procedure code	C	an..3	X
		Code specifying a government procedure.			
C232		GOVERNMENT ACTION	C	1	X
		Function: To indicate the requirement for a specific governmental action and/or procedure or which specific procedure is valid for a specific part of the transport and cross-border transactions. (Note the red portion as change in the segment description.).			
	9415	Government agency identification code	C	an..3	X
		Code identifying a government agency.			
	9411	Government involvement code	C	an..3	X
		Code indicating the requirement and status of governmental involvement.			
	9417	Government action code	C	an..3	X
		Code specifying a type of government action such as inspection, detention, fumigation, security.			
	9353	Government procedure code	C	an..3	X
		Code specifying a government procedure.			

Segment: **FTX** Free Text
Position: 01600
Group: SG28-SG36
Level: 3
Usage: Conditional (Optional)
Max Use: 3
Purpose: A segment to provide supplementary governmental requirements information for this consignment.

Dependency Notes:

Semantic Notes:

Comments:

Notes:

This segment is used to signal if the type and identification in SG37:DOC corresponds to a supporting document or an additional reference.

It is also used to indicate additional information that can be used for the request for a larger period of validity of EU customs status of the goods.

And it is also used to indicate the identifier of a goods item present in a previous document.

Example: The document identified in the occurrence of this group is a supporting document.

FTX+AVD+++SD'

Example: The additional declaration for a normal customs declaration

FTX+CUS+++A'

Example: The goods item identifier in the previous document is 852

FTX+Z01+++852'

Data Element Summary

<u>Data Element</u>	<u>Component Element</u>	<u>Name</u>	<u>Base Attributes</u>	<u>User Attributes</u>
4451		TEXT SUBJECT CODE QUALIFIER	M 1 an..3	M
		Code qualifying the subject of the text.		
	AVD	Customs Valuation Information		
		Information provided in this category will be used by the trader to make certain declarations in relation to Customs Valuation.		
		When this qualifier is used then the first element 4441 has information about the purpose of the document identified in group 37 (DOC).		
	CUS	Customs declaration information		
		(4034) Note contains customs declaration information.		
		This qualifier states that the first element 4440 is a code expressing an additional declaration type. See the mentioned element for code list.		
	Z01	Goods item identifier		
		Identification given to a goods item in a transport document.		

Use this qualifier to provide the goods item identifier given to a goods item in a previous document (SG37:DOC:1001 = 355).

4453	FREE TEXT FUNCTION CODE	C	1	an..3	X
C107	TEXT REFERENCE	C	1		X
	Coded reference to a standard text and its source.				
4441	Free text description code	M		an..17	X
	Code specifying free form text.				
1131	Code list identification code	C		an..17	X
	Code identifying a user or association maintained code list.				
3055	Code list responsible agency code	C		an..3	X
	Code specifying the agency responsible for a code list.				
C108	TEXT LITERAL	C	1		R
	Free text; one to five lines.				
4440	Free text	M		an..512	M
	Free form text.				

If DE:4451=CUS then this element contains the Additional Declaration Type.

If DE:4451=Z01 then this element has the reference number given to a goods item in a previous document. This document is identified in group 37 (DOC) having SG37:DOC:1001=355.

If DE:4451=AVD then this element clarifies the pupose of the document identified in group 37 (DOC) except when that group refers to a previous document.

A

For a normal customs declaration (article 162.^o of the Union Customs Code).

This is a type of Additional Declaration.

AR

Additional Reference

The data in SG37:DOC refers an additional reference.

C

For a simplified customs declaration of regular usage (article 166.^o, n.^o 2, of the Union Customs Code).

This is a type of Additional Declaration.

D

For the presentation of a normal customs declaration (as refered in the scope of code A) in conformity of article 171.^o of the Union Customs Code.

This is a type of Additional Declaration.

E

For the presentation of a simplified customs declaration of occasional basis (article 166.^o, n.^o 1 of the Union Customs Code) in conformity of article 171.^o of the Union Customs Code.

This is a type of Additional Declaration.

F

For the presentation of a simplified customs declaration (as refered in the scope of code C) in conformity of article 171.^o of the Union Customs Code.

This is a type of Additional Declaration.

		SD	Supporting Document		
			The data in SG37:DOC refers a supporting document.		
4440	Free text		C	an..512	X
4440	Free text		C	an..512	X
4440	Free text		C	an..512	X
4440	Free text		C	an..512	X
3453	LANGUAGE NAME CODE		C	1 an..3	X
4447	FREE TEXT FORMAT CODE		C	1 an..3	X

Group: **DOC** Segment Group 37: Document/Message Details
Position: 01610
Group: Segment Group 36 (Governmental Requirements) Conditional (Dependent)
Level: 3
Usage: Conditional (Dependent)
Max Use: 1
Purpose: A group of segments to specify required documents by government.
Notes: This group is used to provide additional references, identification of supporting documents, the identification of previous documents related with the goods under this transport document, and the identification of declarations types related with Customs' authorisations.

So it is to used only when SG35:RFF:1153 in {AFB, Z02, Z03, Z04} and SG36:FTX:4451=AVD and SG36:FTX:4440=SD, or SG36:FTX:4451=AVD and SG36:FTX:4440=AR, or SG36:FTX:4451=Z01.

Segment Summary

	Pos.	Seg.		Req.	Max.	Group:
	<u>No.</u>	<u>ID</u>	<u>Name</u>	<u>Des.</u>	<u>Use</u>	<u>Repeat</u>
M	01620	DOC	Document/Message Details	M	1	

Segment: **DOC** Document/Message Details
Position: 01620 (Trigger Segment)
Group: SG28-SG36-SG37
Level: 3
Usage: Mandatory
Max Use: 1
Purpose: A segment to indicate a document required by government.

Dependency Notes:

Semantic Notes:

Comments:

Notes:

Example: The supporting document is a House Bill of Lading with identifier 985KJH
DOC+714+985KJH'

Example: The declaration tye related with the mentioned authorisation is a T2F
DOC+581'

Example: The previous document is identified by MLOP5842
DOC+355+MLOP5842'

Data Element Summary

<u>Data Element</u>	<u>Component Element</u>	<u>Name</u>	<u>Base Attributes</u>	<u>User Attributes</u>
C002		DOCUMENT/MESSAGE NAME	M 1	M
		Identification of a type of document/message by code or name. Code preferred.		
	1001	Document name code	C an..3	R
		Code specifying the document name.		
		355 Customs summary declaration without commercial detail, alternate Alternate Customs declaration summary without any commercial transaction details.		
		Use this qualifier to identify a previous document related to the goods expressed in this document, identifying the applicable goods in SG36:FTX, first occurrence of DE:4440, having SG36:FTX:4451=Z01.		
		578 EU Customs declaration for External Community Transit (T1) Customs declaration for goods under the external Community/common transit procedure. This applies to "non-Community goods" ("T1" under EU legislation and EC- EFTA "Transit Convention").		
		This qualifier states the identified document is related with usage of electronic transport document request/authorisation (SG35:RFF:1153=Z03).		
		579 EU Customs declaration for internal Community Transit (T2) Customs declaration for goods under the internal Community/common transit procedure. This applies to "Community goods" ("T2" under EU legislation and EC-EFTA "Transit Convention").		
		This qualifier states the identified document is related with		

		usage of electronic transport document request/authorisation (SG35:RFF:1153=Z03).
581	EU Customs declaration for non-fiscal area internal Community Transit (T2F)	Declaration for goods under the internal Community transit procedure in the context of trade between the "VAT" territory of EU Member States and EU territories where the VAT rules do not apply, such as Canary islands, some French overseas territories, the Channel islands and the Aaland islands, and between those territories. ("T2F" under EU Legislation).
		This qualifier states the identified document is related with usage of electronic transport document request/authorisation (SG35:RFF:1153=Z03).
583	EU Customs declaration for mixed consignments (T)	Customs declaration for goods under the Community/common transit procedure for mixed consignments (i.e. consignments that comprise goods of different statuses, like "T1" and "T2") ("T" under EU Legislation).
		This qualifier states the identified document is related with usage of electronic transport document request/authorisation (SG35:RFF:1153=Z03).
584	EU Document for establishing the Community status of goods (T2L)	Form establishing the Community status of goods ("T2L" under EU Legislation).
		This qualifier states the identified document is related with cargo manifest (SG35:RFF:1153=AFB).
585	EU Document for establishing the Community status of goods for certain fiscal purposes (T2LF)	Form establishing the Community status of goods in the context of trade between the "VAT" territory of EU Member States and EU territories where the VAT rules do not apply, such as Canary islands, some French overseas territories, the Channel islands and the Aaland islands, and between those territories ("T2LF" under EU Legislation).
		This qualifier states the identified document is related with cargo manifest (SG35:RFF:1153=AFB).
703	House waybill	The document made out by an agent/consolidator which evidences the contract between the shipper and the agent/consolidator for the arrangement of carriage of goods.
		The value in DE:1004 is the identification of a business transport document.
704	Master bill of lading	A bill of lading issued by the master of a vessel (in actuality the owner or charterer of the vessel). It could cover a number of house bills.
		The value in DE:1004 is the identification of a business transport document.
705	Bill of lading	Negotiable document/message which evidences a contract of carriage by sea and the taking over or loading of goods by carrier, and by which carrier undertakes to deliver goods

against surrender of the document. A provision in the document that goods are to be delivered to the order of a named person, or to order, or to bearer, constitutes such an undertaking.

The value in DE:1004 is the identification of a business transport document.

714 House bill of lading
The bill of lading issued not by the carrier but by the freight forwarder/consolidator known by the carrier.

The value in DE:1004 is the identification of a business transport document.

977 NATO transit document
Customs transit document for the carriage of shipments of the NATO armed forces under Customs supervision.

The value in DE:1004 is the identification of a business transport document.

Z01 EU Customs declaration of goods not subject to a transit regime (C)

This qualifier states the identified document is related with usage of electronic transport document request/authorisation (SG35:RFF:1153=Z03) or states the identified document is related with authorised issuer status request/authorisation (SG35:RFF:1153=Z04).

Z02 EU Customs declaration for the applicability of some simplifications to goods under a transit regime (TD)

This qualifier states the identified document is related with usage of electronic transport document request/authorisation (SG35:RFF:1153=Z03).

Z03 EU Customs declaration goods for export to establish a transit regime (X)

This qualifier states the identified document is related with usage of electronic transport document request/authorisation (SG35:RFF:1153=Z03).

Z04 EU Customs declaration of goods to/from non-fiscal areas (F)

This qualifier states the identified document is related with authorised issuer status request/authorisation (SG35:RFF:1153=Z04).

Z05 EU Customs declaration of other goods (N)

This qualifier states the identified document is related with authorised issuer status request/authorisation (SG35:RFF:1153=Z04).

C503	1131	Code list identification code	C	an..17	X
	3055	Code list responsible agency code	C	an..3	X
	1000	Document name	C	an..35	X
		DOCUMENT/MESSAGE DETAILS	C	1	D
		Identification of document/message by number, status, source and/or language. Only used if SG36:FTX:4451 in {AVD,Z01}.			
	1004	Document identifier	C	an..70	R
		To identify a document.			
	1373	Document status code	C	an..3	X
	1366	Document source description	C	an..70	X

3453	Language name code	C	an..3	X
1056	Version identifier	C	an..9	X
1060	Revision identifier	C	an..6	X
3153	COMMUNICATION MEDIUM TYPE CODE	C	1 an..3	X
1220	DOCUMENT COPIES REQUIRED QUANTITY	C	1 n..2	X
1218	DOCUMENT ORIGINALS REQUIRED QUANTITY	C	1 n..2	X

Group: **TDT** **Segment Group 41: Transport Information**
Position: 01840
Group: Segment Group 28 (Consignment Information) Conditional (Dependent)
Level: 2
Usage: Conditional (Required)
Max Use: 99
Purpose: A group of segments to indicate details of the movement of goods such as mode and means of transport, locations, departure, and arrival date(s) and time(s).

Notes: One aim of this group is to provide some data on means of transport of the vessel call identified in group 01 (RFF). If the context is importation (SG19:GOR:8323=2) then TDT:8051 must be 3. If the context is exportation (SG19:GOR:8323=1) then TDT:8051 must be 12.

In the context of an import movement type (SG19:GOR:8323=2) then the estimated date of arrival of the goods' to the port, must be provided in DTM segment of this group.

Another usage is to provide information on pre/on carriage mode of transport. If the context is importation then information about on-carriage mode can be provided, stating which mode of transport will be used when goods leave the port. If the context is exportation then information about pre-carriage mode can be provided, stating the mode of transport used when the goods arrived the port.

Complementary to this information, the group is used to report countries that were/are part of the route of the consignment, and the country of destination. This data is to be provided in group 43 (LOC) and will be considered by the order of appearance of group 43 (LOC). So, first appearance corresponds to first country of the route, second appearance to second country, and so on. The exception is the country of destination since it is identified by a specific qualifier. In this case, the TDT segment must be in the message but just for syntax purposes.

It can be also used to provide data on the usage of cargo in transport equipment or not using group 42 (TSR), and the method of payment of the transport charges, using group 45 (TCC). Also in this case, the TDT segment must be in the message but just for syntax purposes.

Note that data to identify the vessel and provide other information can be send in different occurrences or in the same occurrence of group 41 (TDT).

Segment Summary

	Pos.	Seg.	Name	Req.	Max.	Group:
	No.	ID		Des.	Use	Repeat
M	01850	TDT	Transport Information	M	1	
D	01860	DTM	Date/Time/Period	C	1	
	01870		Segment Group 42: Transport Service Requirements	C		1
	01900		Segment Group 43: Place/Location Identification	C		99
	01960		Segment Group 45: Charge/Rate Calculations	C		99

Segment: **TDT** **Transport Information**
Position: 01850 (Trigger Segment)
Group: SG28-SG41
Level: 2
Usage: Mandatory
Max Use: 1
Purpose: A segment to indicate information related to a certain stage of the transport, such as mode, means and carrier.

Dependency Notes:

Semantic Notes:

Comments:

Notes:

When DE:8051 = Z01 it means that the relevant data is in groups 42 (TSR), 43 (LOC) and 45 (TCC) in this group. But the TDT segment must be used for syntax purposes only, otherwise it is formally unable to use the other segments according to EDIFACT rules.

Otherwise the segment has data related with the means of transport associated with the vessel call.

Example: Occurrence of group 41 for the purpose of give information on methods of payment of the transport charges

TDT+Z01'

Example: This consignment is on an import movement, by sea, on vessel identified by imo 9365984, with the name WEC VAN EYCK, having Cyprus as nationality.

TDT+3+++1+++++9365984:10:155::CY'

Example: Goods arrived the port by road.

TDT+10+++3'

Data Element Summary

<u>Data Element</u>	<u>Component Element</u>	<u>Name</u>	<u>Base Attributes</u>	<u>User Attributes</u>
8051		TRANSPORT STAGE CODE QUALIFIER	M 1 an..3	M
		Code qualifying a specific stage of transport.		
	3	At arrival		
		Transport by which goods are moved to the place of arrival.		
	10	Pre-carriage transport		
		Transport by which the goods are moved prior to their main carriage transport.		
	12	At departure		
		Transport by which goods are moved from the place of departure.		
	30	On-carriage transport		
		Transport by which the goods are moved after the main carriage transport.		
	Z01	Dummy.		
		For syntax purposes only. The relevant data is in the other		

groups/segments in this group. Use only when no data about the vessel identification is present in the occurrence of the group.

8028 **MEANS OF TRANSPORT JOURNEY IDENTIFIER** **C** **1** **an..17** **X**

C220 **MODE OF TRANSPORT** **C** **1** **D**

Method of transport code or name. Code preferred.

Use if DE:8051 in {3, 12, 10, 30}.

8067 **Transport mode name code** **C** **an..3** **O**

Code specifying the name of a mode of transport.

UN/ECE Recommendation 19 (2nd edition) - Codes for Modes of Transport (Doc. Ref. TRADE/CEFACT/2001/19).

- 0 Transport mode not specified
Transport mode has not been specified.

Notes:

1) This code can be used when the mode is not known or when information on it is not available at the time of issuing the document concerned.

This mode can only be used when the information provided is provisional at a very early stage of the transport service. If used, it must be corrected later on.

Use only when DE:8051 in {3,12}.

- 1 Maritime Transport
Transport of goods and/or persons by sea.
In this mode is provided at this point of the message structure having DE:8051 in {10,30}, it denotes a transshipment situation.

- 2 Rail
Transport of goods and/or persons is by rail.
Use only if DE:8051 is {10,30}.

- 3 Road
Transport of goods and/or persons is by road.
Use only if DE:8051 is {10,30}.

- 4 Air transport
Transport of goods and/or persons is by air.
Use only if DE:8051 is {10,30}.

- 5 Mail
Method to convey goods is by mail.

Notes:

1) This code is provided for practical reasons, despite the fact that mail is not genuine mode of transport. In many countries, the value of merchandise exported and imported by mail is considerable, but the exporter or importer concerned would be unable to state by which mode postal items had been conveyed.

Use only if DE:8051 is {10,30}.

- 7 Fixed transport installation
Transport of item is via fixed transport installation.

Notes:

1) This code applies to installations for continuous transport such as pipelines, ropeways and electric power lines.

Use only if DE:8051 is {10,30}.

	8	Inland water transport			
		Transport of goods and/or persons is by inland water.			
C001	8066	Transport mode name	C	an..17	X
		TRANSPORT MEANS	C	1	X
		Code and/or name identifying the type of means of transport.			
	8179	Transport means description code	C	an..8	X
		Code specifying the means of transport.			
C040	1131	Code list identification code	C	an..17	X
		Code identifying a user or association maintained code list.			
	3055	Code list responsible agency code	C	an..3	X
		Code specifying the agency responsible for a code list.			
	8178	Transport means description	C	an..17	X
		Free form description of the means of transport.			
		CARRIER	C	1	X
		Identification of a carrier by code and/or by name. Code preferred.			
	3127	Carrier identifier	C	an..17	X
		To identify a carrier.			
8101	1131	Code list identification code	C	an..17	X
		Code identifying a user or association maintained code list.			
	3055	Code list responsible agency code	C	an..3	X
		Code specifying the agency responsible for a code list.			
	3126	Carrier name	C	an..35	X
	Name of a carrier.				
		TRANSIT DIRECTION INDICATOR CODE	C	1 an..3	X
C401		EXCESS TRANSPORTATION INFORMATION	C	1	X
		To provide details of reason for, and responsibility for, use of transportation other than normally utilized.			
8101	8457	Excess transportation reason code	M	an..3	X
		Code specifying the reason for excess transportation.			
	8459	Excess transportation responsibility code	M	an..3	X
		Code specifying the responsibility for excess transportation.			
	7130	Customer shipment authorisation identifier	C	an..17	X
	To identify the authorisation to ship issued by the customer.				
C222		TRANSPORT IDENTIFICATION	C	1	D
		Code and/or name identifying the means of transport.			
		Use if DE:8051 in {3, 12}.			
8101	8213	Transport means identification name identifier	C	an..35	R
		Identifies the name of the transport means.			
	1131	Code list identification code	C	an..17	R
		Code identifying a user or association maintained code list.			

	10	Vessel IMO number			
	11	Name of the vessel			
	80	European identification number of a riverine vessel (ENI code)			
	81	Name of a riverine vessel			
	3055	Code list responsible agency code	C	an..3	R
		Code specifying the agency responsible for a code list.			
	155	PT, Portuguese Customs Portuguese Customs.			
	8212	Transport means identification name	C	an..70	X
	8453	Transport means nationality code	C	an..3	D
		Code specifying the nationality of a means of transport. If DE:8015=12 then ISO 3166 alpha 2 country code. Otherwise not used.			
8281		TRANSPORT MEANS OWNERSHIP INDICATOR CODE	C	1 an..3	X
C003		POWER TYPE	C	1	X
		To specify the type of power.			
	7041	Power type code	C	an..3	X
		Code indicating the type of power.			
	1131	Code list identification code	C	an..17	X
		Code identifying a user or association maintained code list.			
	3055	Code list responsible agency code	C	an..3	X
		Code specifying the agency responsible for a code list.			
	7040	Power type description	C	an..17	X
		Description of the type of power.			
C290		TRANSPORT SERVICE	C	1	X
		To identify a transport service.			
	8462	Transport service identification code	C	an..17	X
		Code identifying a transport service.			
	1131	Code list identification code	C	an..17	X
		Code identifying a user or association maintained code list.			
	3055	Code list responsible agency code	C	an..3	X
		Code specifying the agency responsible for a code list.			
	8463	Transport service name	C	an..35	X
		Name of a transport service.			
	8464	Transport service description	C	an..256	X
		Free form description of a transport service.			

Segment: **DTM** Date/Time/Period
Position: 01860
Group: SG28-SG41
Level: 3
Usage: Conditional (Dependent)
Max Use: 1
Purpose: A segment to indicate date(s) and time(s) related to the transport stage.

Dependency Notes:

Semantic Notes:

Comments:

Notes: This segment is to provide the ETA at the port of unloading of the consignment. Use if the transport means identified in the this group is the arrival transport to the port where the manifest is being presented (TDT:8051=3).

Regard that timezone to the east of UTC should include the adopted EDIFACT escape character (?) in the value because of the presence of the plus (+) sign. This is also applicable during summer time when daylight saving time shift is applicable.

Note that the date/time shall be adjusted with the timezone offset applied to the system issuing the message (IFCSUM) and not the offset provided by the system that initially recorded the ETA (local time at the port), regardless it could be the same.

Example: ETA at the port of unloading is 2022/12/21 at 10:32:51, Azores winter time

DTM+777:20221121103251-0100:208'

Data Element Summary

<u>Data Element</u>	<u>Component Element</u>	<u>Name</u>	<u>Base Attributes</u>	<u>User Attributes</u>
C507		DATE/TIME/PERIOD	M 1	M
		Date and/or time, or period relevant to the specified date/time/period type.		
	2005	Date or time or period function code qualifier	M an..3	M
		Code qualifying the function of a date, time or period.		
		777 Arrival date/time at initial port with the intent to unload		
		Date/ time that the conveyance arrives at the initial port in the country of destination.		
	2380	Date or time or period text	C an..35	R
		The value of a date, a date and time, a time or of a period in a specified representation.		
	2379	Date or time or period format code	C an..3	R
		Code specifying the representation of a date, time or period.		
		208 CCYYMMDDHHMMSSZHHMM		
		Calendar date including time with seconds, with Time Zone: C = Century, Y = Year; M = Month; D = Day; H = Hour; M = Minute, S = Seconds, Z = leading plus/minus sign, HHMM = difference to UTC in Hours and Minutes.		

Group: **TSR** Segment Group 42: Transport Service Requirements
Position: 01870
Group: Segment Group 41 (Transport Information) Conditional (Required)
Level: 3
Usage: Conditional (Required)
Max Use: 1
Purpose: A group of segments to specify transport service requirements and scheduling conditions
Notes: If the consignment is related with cargo in transport equipment or not, it is stated in this group.

Segment Summary

	Pos.	Seg.	Name	Req.	Max.	Group:
	No.	ID		Des.	Use	Repeat
M	01880	TSR	Transport Service Requirements	M	1	

Segment: **TSR** **Transport Service Requirements**
Position: 01880 (Trigger Segment)
Group: SG28-SG41-SG42
Level: 3
Usage: Mandatory
Max Use: 1
Purpose: A segment to identify contract, conditions of carriage, services, priority requirements for this stage of transport.

Dependency Notes:

Semantic Notes:

Comments:

Notes: Example: Cargo is containerized

TSR++++9'

Data Element Summary

<u>Data Element</u>	<u>Component Element</u>	<u>Name</u>	<u>Base Attributes</u>		<u>User Attributes</u>
C536		CONTRACT AND CARRIAGE CONDITION To identify a contract and carriage condition.	C	1	X
	4065	Contract and carriage condition code Code to identify the conditions of contract and carriage.	M	an..3	X
	1131	Code list identification code Code identifying a user or association maintained code list.	C	an..17	X
	3055	Code list responsible agency code Code specifying the agency responsible for a code list.	C	an..3	X
C233		SERVICE To identify a service (which may constitute an additional component to a basic contract).	C	1	X
	7273	Service requirement code Code specifying a service requirement.	M	an..3	X
	1131	Code list identification code Code identifying a user or association maintained code list.	C	an..17	X
	3055	Code list responsible agency code Code specifying the agency responsible for a code list.	C	an..3	X
	7273	Service requirement code Code specifying a service requirement.	C	an..3	X
	1131	Code list identification code Code identifying a user or association maintained code list.	C	an..17	X
	3055	Code list responsible agency code Code specifying the agency responsible for a code list.	C	an..3	X
C537		TRANSPORT PRIORITY To indicate the priority of requested transport service.	C	1	X
	4219	Transport service priority code Code specifying the priority of a transport service.	M	an..3	X
	1131	Code list identification code	C	an..17	X

		Code identifying a user or association maintained code list.			
	3055	Code list responsible agency code	C	an..3	X
		Code specifying the agency responsible for a code list.			
C703		NATURE OF CARGO	C	1	R
		Rough classification of a type of cargo.			
	7085	Cargo type classification code	M	an..3	M
		Code specifying the classification of a type of cargo.			
		5 Other non-containerized			
		Non-containerized cargo which cannot be categorized by any of the other nature of cargo code.			
		9 Containerized			
		Cargo stowed or to be stowed in a container.			
	1131	Code list identification code	C	an..17	X
	3055	Code list responsible agency code	C	an..3	X

Group: **LOC** Segment Group 43: Place/Location Identification
Position: 01900
Group: Segment Group 41 (Transport Information) Conditional (Required)
Level: 3
Usage: Conditional (Required)
Max Use: 99
Purpose: A group of segments to specify a location and date/time related to this leg of transport.
Notes: This group is to provide information of countries related with goods/shipments. The sequence of appearance of each occurrence of the group identifies the route followed.
 The country of destination is part of this set. For it, a specific qualifier is used, so it is not considered to determine the order of sequence.

Segment Summary

	Pos.	Seg.		Req.	Max.	Group:
	No.	ID	Name	Des.	Use	Repeat
M	01910	LOC	Place/Location Identification	M	1	

Segment: **LOC** **Place/Location Identification**
Position: 01910 (Trigger Segment)
Group: SG28-SG41-SG43
Level: 3
Usage: Mandatory
Max Use: 1
Purpose: A segment to indicate a location such as origin, destination, stop off, etc. related to this leg of transport.

Dependency Notes:

Semantic Notes:

Comments:

Notes:

Example: Country of destination of the goods is Norway.

LOC+36+NO::5'

Example: The goods are transhipped in Rotterdam, Nederlands

LOC+92+NL::5'

Data Element Summary

<u>Data Element</u>	<u>Component Element</u>	<u>Name</u>	<u>Base Attributes</u>		<u>User Attributes</u>
3227		LOCATION FUNCTION CODE QUALIFIER	M	1 an..3	M
		Code identifying the function of a location.			
	36	Country of ultimate destination (3216) Country known to the consignor or his agent at the time of despatch to be the final country to which the goods are to be delivered.			
	92	Routing Indication of a routing place.			
C517		LOCATION IDENTIFICATION	C	1	R
		Identification of a location by code or name.			
	3225	Location identifier	C	an..35	R
		To identify a location. ISO 3166 Country Code Alpha 2.			
	1131	Code list identification code	C	an..17	X
	3055	Code list responsible agency code	C	an..3	R
		Code specifying the agency responsible for a code list.			
	5	ISO (International Organization for Standardization) International Organization of Standardization.			
	3224	Location name	C	an..256	X
C519		RELATED LOCATION ONE IDENTIFICATION	C	1	X
		Identification the first related location by code or name.			
	3223	First related location identifier	C	an..35	X
		To identify a first related location.			
	1131	Code list identification code	C	an..17	X
		Code identifying a user or association maintained code list.			

	3055	Code list responsible agency code	C	an..3	X
		Code specifying the agency responsible for a code list.			
	3222	First related location name	C	an..70	X
		Name of first related location.			
C553		RELATED LOCATION TWO IDENTIFICATION	C	1	X
		Identification of second related location by code or name.			
	3233	Second related location identifier	C	an..35	X
		To identify a second related location.			
	1131	Code list identification code	C	an..17	X
		Code identifying a user or association maintained code list.			
	3055	Code list responsible agency code	C	an..3	X
		Code specifying the agency responsible for a code list.			
	3232	Second related location name	C	an..70	X
		Name of the second related location.			
5479		RELATION CODE	C	1 an..3	X

Group: **TCC** Segment Group 45: Charge/Rate Calculations
Position: 01960
Group: Segment Group 41 (Transport Information) Conditional (Required)
Level: 3
Usage: Conditional (Optional)
Max Use: 99
Purpose: A group of segments to specify charges (e.g. insurance premium) associated to this stage of the transport.
Notes: This group allows the provision of data on method of payment of the transport charges.

Segment Summary

	Pos.	Seg.		Req.	Max.	Group:
	No.	ID	Name	Des.	Use	Repeat
M	01970	TCC	Charge/Rate Calculations	M	1	

Segment: **TCC** Charge/Rate Calculations
Position: 01970 (Trigger Segment)
Group: SG28-SG41-SG45
Level: 3
Usage: Mandatory
Max Use: 1
Purpose: A segment to specify the type of charge, e.g. insurance premium.

Dependency Notes:

Semantic Notes:

Comments:

Notes: Example: Transport charges were payed by electronic funds transfer

TCC+:::Z0H'

Data Element Summary

<u>Data Element</u>	<u>Component Element</u>	<u>Name</u>	<u>Base Attributes</u>		<u>User Attributes</u>
C200		CHARGE	C	1	R
		Identification of a charge by code and/or by name.			
	8023	Freight and other charges description identifier	C	an..17	X
	1131	Code list identification code	C	an..17	X
	3055	Code list responsible agency code	C	an..3	X
	8022	Freight and other charges description	C	an..26	X
	4237	Payment arrangement code	C	an..3	R
		Code specifying the arrangements for a payment.			
		Z0A Payment in cash			
		Z0B Payment by credit card			
		Z0C Payment by cheque			
		Z0D Other (e.g. direct debit to cash account)			
		Z0H Electronic funds transfer			
		Z0Y Account holder with carrier			
		Z0Z Not pre-paid			
	7140	Item identifier	C	an..35	X
C203		RATE/TARIFF CLASS	C	1	X
		Identification of the applicable rate/tariff class.			
	5243	Rate or tariff class description code	M	an..9	X
		Code specifying an applicable rate or tariff class.			
	1131	Code list identification code	C	an..17	X
		Code identifying a user or association maintained code list.			
	3055	Code list responsible agency code	C	an..3	X
		Code specifying the agency responsible for a code list.			
	5242	Rate or tariff class description	C	an..35	X
		Free form description of an applicable rate or tariff class.			
	5275	Supplementary rate or tariff code	C	an..6	X
		Code specifying a supplementary rate or tariff.			

	1131	Code list identification code	C	an..17	X
		Code identifying a user or association maintained code list.			
	3055	Code list responsible agency code	C	an..3	X
		Code specifying the agency responsible for a code list.			
	5275	Supplementary rate or tariff code	C	an..6	X
		Code specifying a supplementary rate or tariff.			
	1131	Code list identification code	C	an..17	X
		Code identifying a user or association maintained code list.			
	3055	Code list responsible agency code	C	an..3	X
		Code specifying the agency responsible for a code list.			
C528		COMMODITY/RATE DETAIL	C	1	X
		Identification of commodity/rates.			
	7357	Commodity identification code	C	an..18	X
		Code identifying a commodity for Customs, transport or statistical purposes (generic term).			
	1131	Code list identification code	C	an..17	X
		Code identifying a user or association maintained code list.			
	3055	Code list responsible agency code	C	an..3	X
		Code specifying the agency responsible for a code list.			
C554		RATE/TARIFF CLASS DETAIL	C	1	X
		Identification of the applicable rate/tariff class.			
	5243	Rate or tariff class description code	C	an..9	X
		Code specifying an applicable rate or tariff class.			
	1131	Code list identification code	C	an..17	X
		Code identifying a user or association maintained code list.			
	3055	Code list responsible agency code	C	an..3	X
		Code specifying the agency responsible for a code list.			

Group: **NAD** Segment Group 47: Name and Address

Position: 02040

Group: Segment Group 28 (Consignment Information) Conditional (Dependent)

Level: 2

Usage: Conditional (Required)

Max Use: 99

Purpose: A group of segments to identify a party, related references, locations contacts, required documents, and charges to be paid by the party.

Notes: Entities related with the consignment are declared in this group. The scope of entities is larger since several intervenients in the supply chain can be identified, as well entities related with Customs procedures.

A particular situation is to identify that an another entity will provide detailed information about the document of transport. This scenario occurs when the document of transport needs to be unfolded (desdoblado). This entity is designated as Nominated Freight Company for this purpose and use code FB in NAD:3035.

However there is an exception. One of the occurrences of the group is to identify the location of the place where goods are/will be available for Customs verification. In this case segment LOC must be used and group 51 (RFF) may be needed to provide complementary data of this location.

Note that all types of entities declared in this group are related with the consignment and are applicable to all good items.

But there is a subset of entities' types that can be different between goods items. If this is not the case, then they should be declared in this group. But if they differ, then they should not appear in this group, and should be declared in group 56 (NAD). This subset of types correspond to qualifiers CS, FW, MF and WH of NAD:3035.

Entities classified as payer (NAD:3055 id PR) are the ones that have taxes to pay to the Port Authority. Only applicable to ports of the Azores Port Authority.

Segment Summary

	Pos.	Seg.		Req.	Max.	Group:
	<u>No.</u>	<u>ID</u>	<u>Name</u>	<u>Des.</u>	<u>Use</u>	<u>Repeat</u>
M	02050	NAD	Name and Address	M	1	
D	02060	LOC	Place/Location Identification	C	1	
	02080		Segment Group 48: Contact Information	C		9
	02220		Segment Group 51: Reference	C		1

Segment: **NAD** Name and Address
Position: 02050 (Trigger Segment)
Group: SG28-SG47
Level: 2
Usage: Mandatory
Max Use: 1
Purpose: A segment to identify the party's name, address, and function.

Dependency Notes:

Semantic Notes:

Comments:

Notes:

Entities can be identified by two alternative ways.

The short form requires only the usage of elements C082 and C080. The long form implies the usage of elements C080, C059, 3164, C819, 3251 and 3207 according to the usage attributes.

Example: The declarant of the data in this message is identified by the EORI PT502154368

NAD+DT+PT502154368'

Example: Location for Customs inspection is 2, Aveleda Street, 4560-570 Penafiel, Portugal

NAD+EE++++Rua da Aveleda::2+PENAFIEL++4560-570+PT'

Data Element Summary

<u>Data Element</u>	<u>Component Element</u>	<u>Name</u>	<u>Base Attributes</u>	<u>User Attributes</u>
3035		PARTY FUNCTION CODE QUALIFIER	M 1 an..3	M
		Code giving specific meaning to a party.		
	AE	Declarant's agent/representative Any natural or legal person who makes a declaration to an official body on behalf of another natural or legal person, where legally permitted (CCC).		
	AU	Authorized trader (transit) Trader authorized/approved by Customs for special transit procedures e.g. simplified procedure.		
	CN	Consignee [3132] Party to which goods are consigned.		
	CS	Consolidator Party consolidating various consignments, payments etc.		
	CZ	Consignor [3336] Party which, by contract with a carrier, consigns or sends goods with the carrier, or has them conveyed by him. Synonym: shipper, sender.		
	DEN	Agent/representative, direct representation Party authorised to act in the name and on behalf of another person.		
	DT	Declarant [3140] Party which makes a declaration to an official body or -		

				where legally permitted - in whose name, or on whose behalf, a declaration to an official body is made.
	EE			Location of goods for customs examination before clearance The location where the goods are examined by customs before clearance. This qualifier indicates that data identifies the location for Customs goods inspection.
	FB			Nominated freight company Party nominated to act as transport company or carrier for the goods. The entity associated with this qualifier will unfold (desdobrar) this document of transport in an independent message, providing further detailed information regarding the cargo, entities and locations.
	FW			Freight forwarder [3170] Party arranging forwarding of goods.
	MF			Manufacturer of goods [3513] Party who manufactures the goods.
	NI			Notify party [3180] Party to be notified. Synonym: Notify party No. 1.
	PR			Payer [3308] Party responsible for making a payment.
	WH			Warehouse keeper [3022] Party taking responsibility for goods entered into a warehouse.
C082	PARTY IDENTIFICATION DETAILS	C	1	D
	Identification of a transaction party by code. Not used when 3035=EE.			
	3039 Party identifier	M	an..35	M
	Code specifying the identity of a party. EORI number of the entity previously issued by a EU Customs Office.			
	1131 Code list identification code	C	an..17	X
	3055 Code list responsible agency code	C	an..3	X
C058	NAME AND ADDRESS	C	1	X
	Unstructured name and address: one to five lines.			
	3124 Name and address description	M	an..35	X
	Free form description of a name and address line.			
	3124 Name and address description	C	an..35	X
	Free form description of a name and address line.			
	3124 Name and address description	C	an..35	X
	Free form description of a name and address line.			
	3124 Name and address description	C	an..35	X
	Free form description of a name and address line.			
C080	PARTY NAME	C	1	D

		Identification of a transaction party by name, one to five lines. Party name may be formatted.		
		Not used if DE:3035 in {CS, FW, MF, WH, EE}.		
	3036	Party name	M	an..70 M
		Name of a party.		
	3036	Party name	C	an..70 X
	3036	Party name	C	an..70 X
	3036	Party name	C	an..70 X
	3036	Party name	C	an..70 X
	3045	Party name format code	C	an..3 X
C059		STREET	C 1	D
		Street address and/or PO Box number in a structured address: one to four lines.		
		The composite is to provide the address of the entity.		
		Not used if DE:3035 in {CS, FW, MF, WH, AE, FB}.		
		Used if DE:3035=EE and LOC:3233=Z.		
	3042	Street and number or post office box identifier	M	an..256 M
		To identify a street and number and/or Post Office box number.		
		If DE:3035 <> EE the value is the Street Name of the entity.		
		If DE:3035 = EE and LOC:3233 = Z the value is the Street Name of location for Customs control.		
	3042	Street and number or post office box identifier	C	an..256 D
		To identify a street and number and/or Post Office box number.		
		Additional line for the street name.		
		Not used if DE:3035=EE.		
	3042	Street and number or post office box identifier	C	an..256 R
		To identify a street and number and/or Post Office box number.		
		Door number.		
	3042	Street and number or post office box identifier	C	an..256 D
		To identify a street and number and/or Post Office box number.		
		Postal Office Box.		
		Not used if DE:3035=EE.		
3164		CITY NAME	C 1	an..35 D
		Name of a city.		
		Not used if qualifier in DE:3035 in {CS, FW, MF, WH, AE, FB}.		
C819		COUNTRY SUBDIVISION DETAILS	C 1	D
		To specify a country subdivision, such as state, canton, county, prefecture.		
		Not used if DE:3035 in {CS, FW, MF, WH, AE, FB, EE}.		
	3229	Country subdivision identifier	C	an..9 X
	1131	Code list identification code	C	an..17 X
	3055	Code list responsible agency code	C	an..3 X
	3228	Country subdivision name	C	an..70 R

3251	Name of a country subdivision, such as state, canton, county, prefecture. POSTAL IDENTIFICATION CODE Code specifying the postal zone or address. Not used if DE:3035 in {CS, FW, MF, WH, AE, FB}.	C	1	an..17	D
3207	COUNTRY IDENTIFIER Identification of the name of the country or other geographical entity as defined in ISO 3166-1 and UN/ECE Recommendation 3. Not used if DE:3035 in {CS, FW, MF, WH, AE, FB}.	C	1	an..3	D

Segment: LOC Place/Location Identification

Position: 02060

Group: SG28-SG47

Level: 3

Usage: Conditional (Dependent)

Max Use: 1

Purpose: A segment to indicate location where a specific function will be performed.

Dependency Notes:

Semantic Notes:

Comments:

Notes: Use this segment when SG47:NAD:3035=EE and provides complementary data about the location of Customs inspection.

Example: The designated location is at Freixieiro Customs office

LOC+43+PT000284+A+V'

Data Element Summary

<u>Data Element</u>	<u>Component Element</u>	<u>Name</u>	<u>Base Attributes</u>		<u>User Attributes</u>
3227		LOCATION FUNCTION CODE QUALIFIER	M	1 an..3	M
		Code identifying the function of a location.			
	43	Place of Customs examination			
		Place where Customs undertakes a physical inspection of goods to satisfy themselves that the goods' nature, origin, condition, quantity and value are in accordance with the particulars furnished on the goods declaration (CCC).			
C517		LOCATION IDENTIFICATION	C	1	D
		Identification of a location by code or name.			
		Use when DE:3233 in {V, Y} to provide an identification number.			
	3225	Location identifier	C	an..35	R
		To identify a location.			
	1131	Code list identification code	C	an..17	X
	3055	Code list responsible agency code	C	an..3	X
	3224	Location name	C	an..256	X
C519		RELATED LOCATION ONE IDENTIFICATION	C	1	R
		Identification the first related location by code or name.			
	3223	First related location identifier	C	an..35	R
		To identify a first related location.			
	A	Designated location			
	B	Authorised place			
	C	Approved place			
	D	Other			
	1131	Code list identification code	C	an..17	X
	3055	Code list responsible agency code	C	an..3	X
	3222	First related location name	C	an..70	X
C553		RELATED LOCATION TWO	C	1	R

IDENTIFICATION

Identification of second related location by code or name.

3233	Second related location identifier	C	an..35	R
	To identify a second related location.			
	V	Customs office identifier		
	Y	Authorization number		
	Z	Address		
1131	Code list identification code	C	an..17	X
3055	Code list responsible agency code	C	an..3	X
3232	Second related location name	C	an..70	X
5479	RELATION CODE	C	1 an..3	X

Group: **CTA** Segment Group 48: Contact Information
Position: 02080
Group: Segment Group 47 (Name and Address) Conditional (Required)
Level: 3
Usage: Conditional (Optional)
Max Use: 9
Purpose: A group of segments identifying a contact and its communications related to the party.
Notes: This group is to provide data on contact person related with the entity.

Segment Summary

	Pos.	Seg.		Req.	Max.	Group:
	No.	ID	Name	Des.	Use	Repeat
M	02090	CTA	Contact Information	M	1	
R	02100	COM	Communication Contact	C	2	

Segment: **CTA** **Contact Information**
Position: 02090 (Trigger Segment)
Group: SG28-SG47-SG48
Level: 3
Usage: Mandatory
Max Use: 1
Purpose: A segment to identify a person or department within a party.

Dependency Notes:

Semantic Notes:

Comments:

Notes: Example: The contact person is John Smith

CTA+IC+:John Smith'

Data Element Summary

<u>Data Element</u>	<u>Component Element</u>	<u>Name</u>	<u>Base Attributes</u>	<u>User Attributes</u>
3139		CONTACT FUNCTION CODE	C 1 an..3	R
		Code specifying the function of a contact (e.g. department or person).		
	BF	Service contact		
		Department/person to be contacted in service matters.		
	IC	Information contact		
		Department/person to contact for questions regarding transactions.		
C056		CONTACT DETAILS	C 1	D
		Code and/or name of a contact such as a department or employee. Code preferred.		
		Use if DE:3139=IC.		
	3413	Contact identifier	C an..17	X
	3412	Contact name	C an..256	R
		Name of a contact, such as a department or employee.		

Segment: **COM** **Communication Contact**
Position: 02100
Group: SG28-SG47-SG48
Level: 4
Usage: Conditional (Required)
Max Use: 2
Purpose: A segment to identify a communication number of a person or department to whom communication should be directed.

Dependency Notes:

Semantic Notes:

Comments:

Notes: If SG48:CTA:3139=IC then this group should appear twice: once for email and another for telephone/mobile.

Example: Phone numebr is +351 229990700

COM+TE:00351229990700'

Example: Email address is geral@dominio.pt

COM+EM:geral AT dominio.pt'

Data Element Summary

<u>Data Element</u>	<u>Component Element</u>	<u>Name</u>	<u>Base Attributes</u>	<u>User Attributes</u>
C076		COMMUNICATION CONTACT Communication number of a department or employee in a specified channel.	M 3	M
	3148	Communication address identifier To identify a communication address.	M	an..512 M
	3155	Communication means type code Code specifying the type of communication address.	M	an..3 M
		EM Electronic mail Exchange of mail by electronic means.		
		TE Telephone Voice/data transmission by telephone.		

Group: **RFF** Segment Group 51: Reference
Position: 02220
Group: Segment Group 47 (Name and Address) Conditional (Required)
Level: 3
Usage: Conditional (Dependent)
Max Use: 1
Purpose: A group of segments to specify a reference related to the party.
Notes: Use this group when SG47:NAD:3035=EE and SG47:LOC:3233=Y. It is to provide the authorisation number provided by Customs to the location.

Segment Summary

	Pos.	Seg.		Req.	Max.	Group:
	<u>No.</u>	<u>ID</u>	<u>Name</u>	<u>Des.</u>	<u>Use</u>	<u>Repeat</u>
M	02230	RFF	Reference	M	1	

Segment: **RFF** Reference
Position: 02230 (Trigger Segment)
Group: SG28-SG47-SG51
Level: 3
Usage: Mandatory
Max Use: 1
Purpose: A segment to identify a reference used by a party.

Dependency Notes:

Semantic Notes:

Comments:

Notes: Example: The location has authorisation number 21PT58745

RFF+ANJ:21PT58745'

Data Element Summary

<u>Data Element</u>	<u>Component Element</u>	<u>Name</u>	<u>Base Attributes</u>		<u>User Attributes</u>
C506		REFERENCE	M	1	M
		Identification of a reference.			
	1153	Reference code qualifier	M	an..3	M
		Code qualifying a reference.			
		ANJ Authorization number			
		A number which uniquely identifies an authorization.			
	1154	Reference identifier	C	an..70	R
		Identifies a reference.			
	1156	Document line identifier	C	an..6	X
	1056	Version identifier	C	an..9	X
	1060	Revision identifier	C	an..6	X

Group: **GID** Segment Group 55: Goods Item Details
Position: 02440
Group: Segment Group 28 (Consignment Information) Conditional (Dependent)
Level: 2
Usage: Conditional (Optional)
Max Use: 99999
Purpose: A group of segments to describe the goods items for which transport is undertaken.
Notes: Each instance of this group describes goods items being transported under the transport document.
 If only empty transport equipment being repositioning is present in the transport document, then this group is not needed.

Segment Summary

	Pos.	Seg.	Name	Req.	Max.	Group:
	No.	ID		Des.	Use	Repeat
M	02450	GID	Goods Item Details	M	1	
D	02520	PIA	Additional Product Id	C	1	
R	02540	FTX	Free Text	C	3	
	02550		Segment Group 56: Name and Address	C		9
R	02580	GDS	Nature of Cargo	C	1	
	02590		Segment Group 57: Measurements	C		1
	02650		Segment Group 59: Reference	C		9
	02680		Segment Group 60: Package Identification	C		999
	02790		Segment Group 62: Governmental Requirements	C		9
	02930		Segment Group 66: Split Goods Placement	C		999
	03120		Segment Group 70: Dangerous Goods	C		99

Segment: **GID** Goods Item Details
Position: 02450 (Trigger Segment)
Group: SG28-SG55
Level: 2
Usage: Mandatory
Max Use: 1
Purpose: A segment to identify a goods item for which transport is undertaken. A goods item can be identified by up to three levels of packaging.

Dependency Notes:

Semantic Notes:

Comments:

Notes: Example: 20 Boxes of carton, being the goods item number 3

GID+3+20:CT'

Data Element Summary

<u>Data Element</u>	<u>Component Element</u>	<u>Name</u>	<u>Base Attributes</u>			<u>User Attributes</u>
1496		GOODS ITEM NUMBER	C	1	an..6	R
		To specify a goods item within a consignment. A number to identify the goods item.				
C213		NUMBER AND TYPE OF PACKAGES	C	1		R
		Number and type of individual parts of a shipment.				
	7224	Package quantity	C		n..8	R
		To specify the number of packages. Note that for breakbulk, it must be declared 1 volume/package.				
	7065	Package type description code	C		an..17	R
		Code specifying the type of package. UN/ECE Recommendation 21 - Codes for Type of Cargo, Packages and Packaging Materials according to Annex V and Annex VI (Doc. Ref. TRADE/CEFACT/2002/).				
	1131	Code list identification code	C		an..17	X
	3055	Code list responsible agency code	C		an..3	X
	7064	Type of packages	C		an..35	X
	7233	Packaging related description code	C		an..3	X
C213		NUMBER AND TYPE OF PACKAGES	C	1		X
		Number and type of individual parts of a shipment.				
	7224	Package quantity	C		n..8	X
		To specify the number of packages.				
	7065	Package type description code	C		an..17	X
		Code specifying the type of package.				
	1131	Code list identification code	C		an..17	X
		Code identifying a user or association maintained code list.				
	3055	Code list responsible agency code	C		an..3	X
		Code specifying the agency responsible for a code list.				
	7064	Type of packages	C		an..35	X
		Description of the form in which goods are presented.				

	7233	Packaging related description code Code specifying information related to packaging.	C	an..3	X
C213		NUMBER AND TYPE OF PACKAGES Number and type of individual parts of a shipment.	C	1	X
	7224	Package quantity To specify the number of packages.	C	n..8	X
	7065	Package type description code Code specifying the type of package.	C	an..17	X
	1131	Code list identification code Code identifying a user or association maintained code list.	C	an..17	X
	3055	Code list responsible agency code Code specifying the agency responsible for a code list.	C	an..3	X
	7064	Type of packages Description of the form in which goods are presented.	C	an..35	X
	7233	Packaging related description code Code specifying information related to packaging.	C	an..3	X
C213		NUMBER AND TYPE OF PACKAGES Number and type of individual parts of a shipment.	C	1	X
	7224	Package quantity To specify the number of packages.	C	n..8	X
	7065	Package type description code Code specifying the type of package.	C	an..17	X
	1131	Code list identification code Code identifying a user or association maintained code list.	C	an..17	X
	3055	Code list responsible agency code Code specifying the agency responsible for a code list.	C	an..3	X
	7064	Type of packages Description of the form in which goods are presented.	C	an..35	X
	7233	Packaging related description code Code specifying information related to packaging.	C	an..3	X
C213		NUMBER AND TYPE OF PACKAGES Number and type of individual parts of a shipment.	C	1	X
	7224	Package quantity To specify the number of packages.	C	n..8	X
	7065	Package type description code Code specifying the type of package.	C	an..17	X
	1131	Code list identification code Code identifying a user or association maintained code list.	C	an..17	X
	3055	Code list responsible agency code Code specifying the agency responsible for a code list.	C	an..3	X
	7064	Type of packages Description of the form in which goods are presented.	C	an..35	X
	7233	Packaging related description code Code specifying information related to packaging.	C	an..3	X

Code specifying information related to packaging.

Segment: **PIA Additional Product Id**
Position: 02520
Group: SG28-SG55
Level: 3
Usage: Conditional (Dependent)
Max Use: 1
Purpose: A segment to specify article numbers.

Dependency Notes:

Semantic Notes:

Comments:

Notes:

This segment is to provide the commodity code using the Harmonized System (this is required, except if Reexport Notification is being submitted), complemented by the Combined Nomenclature Code (this is optional). Additionally the code corresponding to the european inventory of chemical substances (CUSCode) can be provided is applicable.

The Harmonized System code must be declared with a minimum of 6 digits (chapter, heading and sub-heading) and the first Composite C212 should be used.

The Combined Nomenclature, when declared, must be 2 digits and the second composite C212 should be used.

The CUSCode, when provided, must be in the third composite C212.

Example: The goods are fresh apples

PIA+5+080810:HS'

Example: The goods is chocolate powder containing no sucrose

PIA+5+180610:HS+15:TSP'

Example: The goods is distilled water

PIA+5+285390:HS+10:TSP+0025220-0:Z01'

Data Element Summary

<u>Data Element</u>	<u>Component Element</u>	<u>Name</u>	<u>Base Attributes</u>	<u>User Attributes</u>
4347		PRODUCT IDENTIFIER CODE QUALIFIER	M 1 an..3	M
		Code qualifying the product identifier.		
	5	Product identification		
		The item number is for product identification.		
C212		ITEM NUMBER IDENTIFICATION	M 1	M
		Goods identification for a specified source.		
	7140	Item identifier	C an..35	R
		To identify an item.		
	7143	Item type identification code	C an..3	R
		Coded identification of an item type.		
	HS	Harmonised system		
		The item number is part of, or is generated in the context of the		

Harmonised Commodity Description and Coding System
(Harmonised System), as developed and maintained by the
World Customs Organization (WCO).

	1131	Code list identification code	C	an..17	X
	3055	Code list responsible agency code	C	an..3	X
C212		ITEM NUMBER IDENTIFICATION	C	1	O
		Goods identification for a specified source.			
	7140	Item identifier	C	an..35	R
		To identify an item.			
	7143	Item type identification code	C	an..3	R
		Coded identification of an item type.			
		TSP EU Combined Nomenclature			
		The number is part of, or is generated in the context of the Combined Nomenclature classification, as developed and maintained by the European Union (EU).			
	1131	Code list identification code	C	an..17	X
	3055	Code list responsible agency code	C	an..3	X
C212		ITEM NUMBER IDENTIFICATION	C	1	O
		Goods identification for a specified source.			
	7140	Item identifier	C	an..35	R
		To identify an item.			
	7143	Item type identification code	C	an..3	R
		Coded identification of an item type.			
		Z01 EU Customs chemical substances identifier			
	1131	Code list identification code	C	an..17	X
	3055	Code list responsible agency code	C	an..3	X
C212		ITEM NUMBER IDENTIFICATION	C	1	X
		Goods identification for a specified source.			
	7140	Item identifier	C	an..35	X
		To identify an item.			
	7143	Item type identification code	C	an..3	X
		Coded identification of an item type.			
	1131	Code list identification code	C	an..17	X
		Code identifying a user or association maintained code list.			
	3055	Code list responsible agency code	C	an..3	X
		Code specifying the agency responsible for a code list.			
C212		ITEM NUMBER IDENTIFICATION	C	1	X
		Goods identification for a specified source.			
	7140	Item identifier	C	an..35	X
		To identify an item.			
	7143	Item type identification code	C	an..3	X
		Coded identification of an item type.			
	1131	Code list identification code	C	an..17	X
		Code identifying a user or association maintained code list.			

3055	Code list responsible agency code	C	an..3	X
	Code specifying the agency responsible for a code list.			

Segment: **FTX** Free Text
Position: 02540
Group: SG28-SG55
Level: 3
Usage: Conditional (Required)
Max Use: 3
Purpose: A segment to specify processable supplementary information relating to the goods item.

Dependency Notes:

Semantic Notes:

Comments:

Notes:

This segment is used to provide a textual description of goods in Portuguese or in English. This category is identified by qualifier AAA.

Another usage it to provide shipping marks. This category is identified by qualifier PAC.

It is also used to provide additional information is applicable to situations when the declarant pretends to provide other information associated with the transport document in the Customs context. This category is identified by qualifier ACB.

Additionally everytime the goods in this segment group are declared in an export customs declaration (SG02:GOR:8323='1'), it must be stated if they are the total, just a part or the rest of what is referenced on that declaration. This fact is stated in this segment also with qualifier ACB, having element C107:4441 used for this purpose with code 'T' for total, 'P' for part and 'R' for rest. However if nothing is declared, the default understanding it that the goods correspond to the total.

Example: Goods description is PVC bags for packaging purpose, in english.

FTX+AAA+++PVC BAGS FOR PACKAGING PURPOSE'

Example: Shipping marks are RAS/1 12345

FTX+PAC+++ RAS/1 12345'

Example: Additional information related with Article 18 of Union Customs Code, indicating 22PT251533

FTX+ACB++20300+22PT251533'

Example: Goods being exported are part of a Customs Declaration of Export

FTX+ACB++P'

Data Element Summary

<u>Data Element</u>	<u>Component Element</u>	<u>Name</u>	<u>Base Attributes</u>	<u>User Attributes</u>
4451		TEXT SUBJECT CODE QUALIFIER	M 1 an..3	M

Code qualifying the subject of the text.

AAA

Goods item description

[7002] Plain language description of the nature of a goods item sufficient to identify it for customs, statistical or transport

		purposes.			
		Textual goods description is in composite C108.			
	ACB	Additional information (4270) The text contains additional information.			
	PAC	Packing/marketing information Information regarding the packaging and/or marking of goods. Shipping marks and numbers should be in composite C108.			
4453	FREE TEXT FUNCTION CODE		C	1 an..3	X
C107	TEXT REFERENCE		C	1	D
		Coded reference to a standard text and its source. Use if DE:4451=ACB.			
4441	Free text description code		M	an..17	M
		Code specifying free form text.			
	00100	Simplified Authorisation			
	00700	AA			
	00800	AA MPC			
	00900	IT			
	01000	Diplomatic goods - inspection exempted			
	10600	Unkown receiver			
	20100				
	20200				
	20300	Export			
	30300	E-U			
	30500	Exit Customs Office			
	30600	Unkown receiver			
	30700	INF3			
	40100	Valid higher limit of the goods EU status proof period			
	P	Part			
	R	Rest			
	T	Total			
1131	Code list identification code		C	an..17	X
3055	Code list responsible agency code		C	an..3	X
C108	TEXT LITERAL		C	1	D
		Free text; one to five lines. Not used if DE:4451 = ACB and DE:4441 in {T, P, R}.			
4440	Free text		M	an..512	M
		Free form text. If DE:4451=ACB then this element is to provide the additional information related with the context expressed in DE:4441. If DE:4451=AAA then this element should contain description of goods. If DE:4451=PAC then this element and all other 4451 elements are used to contain shipping marks and numbers.			
4440	Free text		C	an..512	O
		Free form text.			

4440	Free text Free form text.	C	an..512	O
4440	Free text Free form text.	C	an..512	O
4440	Free text Free form text.	C	an..512	O
3453	LANGUAGE NAME CODE	C	1 an..3	X
4447	FREE TEXT FORMAT CODE	C	1 an..3	X

Group: **NAD** Segment Group 56: Name and Address
Position: 02550
Group: Segment Group 55 (Goods Item Details) Conditional (Optional)
Level: 3
Usage: Conditional (Optional)
Max Use: 9
Purpose: A group of segments to identify different places of collection and/or delivery for the goods item.
Notes: This group is used to declare the entities that have an additional role in the supply chain of the goods item.

Note that entites that are common to all goods items shall be declare at the consignment level. There is no need to replicate in all goods items.

Segment Summary

	Pos.	Seg.		Req.	Max.	Group:
	<u>No.</u>	<u>ID</u>	<u>Name</u>	<u>Des.</u>	<u>Use</u>	<u>Repeat</u>
M	02560	NAD	Name and Address	M	1	

Segment: **NAD** Name and Address
Position: 02560 (Trigger Segment)
Group: SG28-SG55-SG56
Level: 3
Usage: Mandatory
Max Use: 1
Purpose: A segment to specify an address of a place of collection or delivery for a goods item.

Dependency Notes:

Semantic Notes:

Comments:

Notes:

Entities can be identified by two alternative ways.

The short form requires only the usage of elements C082. The long form implies the usage of elements C080, C059, 3164, C819, 3251 and 3207 according to the usage attributes.

However at this point of the documento, only the short form is available.

Example: A freight forwarder involved in the movement of the goods item is CARGOBASE TRANSITÁRIOS, LDA identified by the EORI PT509128866

NAD+FW+PT509128866'

Example: The goods items manufacturer is ALELUIA - CERÂMICAS, SA having EORI PT500721831

NAD+MF+PT500721831'

Data Element Summary

<u>Data Element</u>	<u>Component Element</u>	<u>Name</u>	<u>Base Attributes</u>			<u>User Attributes</u>
3035		PARTY FUNCTION CODE QUALIFIER	M	1	an..3	M
		Code giving specific meaning to a party.				
		CS Consolidator				
		Party consolidating various consignments, payments etc.				
		FW Freight forwarder				
		[3170] Party arranging forwarding of goods.				
		MF Manufacturer of goods				
		[3513] Party who manufactures the goods.				
		WH Warehouse keeper				
		[3022] Party taking responsibility for goods entered into a warehouse.				
C082		PARTY IDENTIFICATION DETAILS	C	1		O
		Identification of a transaction party by code.				
	3039	Party identifier	M		an..35	M
		Code specifying the identity of a party.				
	1131	Code list identification code	C		an..17	X
	3055	Code list responsible agency code	C		an..3	X
C058		NAME AND ADDRESS	C	1		X

		Unstructured name and address: one to five lines.			
	3124	Name and address description	M	an..35	X
		Free form description of a name and address line.			
	3124	Name and address description	C	an..35	X
		Free form description of a name and address line.			
	3124	Name and address description	C	an..35	X
		Free form description of a name and address line.			
	3124	Name and address description	C	an..35	X
		Free form description of a name and address line.			
	3124	Name and address description	C	an..35	X
		Free form description of a name and address line.			
C080		PARTY NAME	C	1	X
		Identification of a transaction party by name, one to five lines. Party name may be formatted.			
	3036	Party name	M	an..70	X
		Name of a party.			
	3036	Party name	C	an..70	X
	3036	Party name	C	an..70	X
	3036	Party name	C	an..70	X
	3036	Party name	C	an..70	X
	3045	Party name format code	C	an..3	X
C059		STREET	C	1	X
		Street address and/or PO Box number in a structured address: one to four lines.			
	3042	Street and number or post office box identifier	M	an..256	X
		To identify a street and number and/or Post Office box number.			
	3042	Street and number or post office box identifier	C	an..256	X
		To identify a street and number and/or Post Office box number.			
	3042	Street and number or post office box identifier	C	an..256	X
		To identify a street and number and/or Post Office box number.			
	3042	Street and number or post office box identifier	C	an..256	X
		To identify a street and number and/or Post Office box number.			
3164		CITY NAME	C	1 an..35	X
C819		COUNTRY SUBDIVISION DETAILS	C	1	X
		To specify a country subdivision, such as state, canton, county, prefecture.			
	3229	Country subdivision identifier	C	an..9	X
	1131	Code list identification code	C	an..17	X
	3055	Code list responsible agency code	C	an..3	X
	3228	Country subdivision name	C	an..70	X
		Name of a country subdivision, such as state, canton, county, prefecture.			
3251		POSTAL IDENTIFICATION CODE	C	1 an..17	X
3207		COUNTRY IDENTIFIER	C	1 an..3	X

Segment: **GDS** Nature of Cargo
Position: 02580
Group: SG28-SG55
Level: 3
Usage: Conditional (Required)
Max Use: 1
Purpose: A segment to describe the nature of cargo.

Dependency Notes:

Semantic Notes:

Comments:

Notes: The general description must be given by the Annex II - Eurostat Maritime Transport Directive with two digits.

Example: Solid bulk, agricultural products

GDS+23'

Data Element Summary

<u>Data Element</u>	<u>Component Element</u>	<u>Name</u>	<u>Base Attributes</u>		<u>User Attributes</u>
C703		NATURE OF CARGO Rough classification of a type of cargo.	C	1	R
	7085	Cargo type classification code Code specifying the classification of a type of cargo. Annex II - Eurostat Maritime Transport Directive, plus the following codes: 101 - Express 111 - Mixed (General Cargo/Breakbulk plus Containerised) 112 - Mixed (General Cargo/Breakbulk plus Express)	M	an..3	M
	1131	Code list identification code	C	an..17	X
	3055	Code list responsible agency code	C	an..3	X
C288		PRODUCT GROUP To give product group information.	C	1	X
	5389	Product group name code Code specifying the name of a product group.	C	an..25	X
	1131	Code list identification code Code identifying a user or association maintained code list.	C	an..17	X
	3055	Code list responsible agency code Code specifying the agency responsible for a code list.	C	an..3	X
	5388	Product group name Name of a product code.	C	an..35	X

Group: **MEA** Segment Group 57: Measurements
Position: 02590
Group: Segment Group 55 (Goods Item Details) Conditional (Optional)
Level: 3
Usage: Conditional (Required)
Max Use: 1
Purpose: A group of segments to specify measurements applicable to a goods item.
Notes: This group is only to provide the gross mass of the goods item, including packaging, excluding transport equipment.

Segment Summary

	Pos.	Seg.		Req.	Max.	Group:
	<u>No.</u>	<u>ID</u>	<u>Name</u>	<u>Des.</u>	<u>Use</u>	<u>Repeat</u>
M	02600	MEA	Measurements	M	1	

Segment: **MEA** Measurements
Position: 02600 (Trigger Segment)
Group: SG28-SG55-SG57
Level: 3
Usage: Mandatory
Max Use: 1
Purpose: A segment to specify measurements, other than dimensions, applicable to a goods item.

Dependency Notes:

Semantic Notes:

Comments:

Notes:

Although the element 6066 allows 18 digits, only a maximum of 16 digits can be used. In case decimal digits need to be send, then a maxim of 6 are allowed and the amount needed must be discounted from the integer part of the number, in order to keep the maximum of 16 digits. The decimal mark can be the full stop (.) or comma (,) and don't count for the number size according to EDIFACT rules.

Example: The goods item has a gross weight of 735.000,00 Kg

MEA+AAE+AAB+KGM:735000,00'

Example: The goods item has a gross weight of 21,075 Kg

MEA+AAE+AAB+KGM:21,075'

Data Element Summary

<u>Data Element</u>	<u>Component Element</u>	<u>Name</u>	<u>Base Attributes</u>	<u>User Attributes</u>
6311		MEASUREMENT PURPOSE CODE QUALIFIER	M 1 an..3	M
		Code qualifying the purpose of the measurement.		
	AAE	Measurement		
		[6314] To specify the value of a measurement.		
C502		MEASUREMENT DETAILS	C 1	R
		Identification of measurement type.		
	6313	Measured attribute code	C an..3	R
		Code specifying the attribute measured.		
	AAB	Goods item gross weight		
		[6292] Weight (mass) of goods including packing but excluding the carrier's equipment.		
	6321	Measurement significance code	C an..3	X
	6155	Non-discrete measurement name code	C an..17	X
	6154	Non-discrete measurement name	C an..70	X
C174		VALUE/RANGE	C 1	R
		Measurement value and relevant minimum and maximum values of the measurement range.		
	6411	Measurement unit code	C an..8	R
		Code specifying the unit of measurement.		
	KGM	Kilogram		
	6314	Measure	C an..18	R

	To specify the value of a measurement.			
6162	Range minimum quantity	C	n..18	X
6152	Range maximum quantity	C	n..18	X
6432	Significant digits quantity	C	n..2	X
7383	SURFACE OR LAYER CODE	C	1 an..3	X

Group: **RFF** Segment Group 59: Reference
Position: 02650
Group: Segment Group 55 (Goods Item Details) Conditional (Optional)
Level: 3
Usage: Conditional (Optional)
Max Use: 9
Purpose: A group of segments to identify references to a goods item.
Notes: This group is to provide references of different nature.

In case of general cargo (not in transport equipment) one nature is the identification of a shipment to which the goods items are part of. The applicable qualifier to use element RFF:1153 is AVU.

A second nature is to provide the number that Customs provided to the goods item as a result of the previous submission and Customs acceptance of the transport document. The applicable qualifier to use element RFF:1153 is ABT.

A third nature, to be used if the goods are being transhipped in the port of call and goods are being loaded into the vessel (SG02:GOR:8323=1), is to provide data of the call and transport document on arrival. These are the Customs process vessel call identification (RFF:1153 is AFM) and the Customs transport document identification (RFF:1153 is ANK).

A fourth nature is to identify authorisations of Customs nature that can be applied to the goods movement. The applicable qualifiers to use in element RFF:1153 are ABT (on a future time), Z02, Z03, Z04.

Segment Summary

	Pos.	Seg.	Name	Req.	Max.	Group:
	No.	ID		Des.	Use	Repeat
M	02660	RFF	Reference	M	1	

Segment: **RFF** Reference
Position: 02660 (Trigger Segment)
Group: SG28-SG55-SG59
Level: 3
Usage: Mandatory
Max Use: 1
Purpose: A segment to identify a reference to a goods item.

Dependency Notes:

Semantic Notes:

Comments:

Notes: Example: Customs item number provided by Customs is
 PTLIS040120221234561234A12345

RFF+ABT:PTLIS040120221234561234A12345'

Data Element Summary

<u>Data Element</u>	<u>Component Element</u>	<u>Name</u>	<u>Base Attributes</u>		<u>User Attributes</u>
C506		REFERENCE	M	1	M
		Identification of a reference.			
	1153	Reference code qualifier	M	an..3	M
		Code qualifying a reference.			
		ABT Goods declaration document identifier, Customs [1426] Reference number, assigned or accepted by Customs, to identify a goods declaration. The usage of this qualifier means that the value in DE:1154 is a number provided by Customs to the goods item as a result of the previous creation of the transport document in Customs system. This value must be send when the transport document is being updated or removed (annul), except if the goods item are being added on the transport document update.			
		AFB Cargo manifest number [1037] Reference number assigned to a cargo manifest. This qualifier is a type of Customs authorisation.			
		AFM Secondary Customs reference A number that identifies the secondary customs reference. The value in DE:1154 gives the identification provided by Customs to the goods item in the transport document of goods item arrival.			
		ANK Reference number assigned by third party Reference number assigned by a third party. The value in DE:1154 gives the identification provided by Customs to the vessel call of the vessel from which the goods item were unloaded.			
		AVU Unique goods shipment identifier Unique identifier assigned to a shipment of goods linking trade, tracking and transport information. Use if not in presence of containerised cargo.			

	Z02	EU Customs regular line service request/authorisation This qualifier is a type of Customs authorisation.			
	Z03	EU Customs usage of Electronic Transport Document request/authorisation This qualifier is a type of Customs authorisation.			
	Z04	EU Customs authorised issuer status request/authorisation This qualifier is a type of Customs authorisation.			
1154	Reference identifier		C	an..70	R
	Identifies a reference.				
1156	Document line identifier		C	an..6	X
1056	Version identifier		C	an..9	X
1060	Revision identifier		C	an..6	X

Group: **PCI** Segment Group 60: Package Identification
Position: 02680
Group: Segment Group 55 (Goods Item Details) Conditional (Optional)
Level: 3
Usage: Conditional (Optional)
Max Use: 999
Purpose: A group of segments to specify marks and numbers of a goods item.
Notes: This group allows the declaration of a list of chassis of vehicles.
 Segment PCI is present for syntax purposes only.

Segment Summary

	Pos.	Seg.	Name	Req.	Max.	Group:
	<u>No.</u>	<u>ID</u>	<u>Name</u>	<u>Des.</u>	<u>Use</u>	<u>Repeat</u>
M	02690	PCI	Package Identification	M	1	
O	02720	GIN	Goods Identity Number	C	9999	

Segment: **PCI** Package Identification
Position: 02690 (Trigger Segment)
Group: SG28-SG55-SG60
Level: 3
Usage: Mandatory
Max Use: 1
Purpose: A segment to specify marks and numbers of a good item.

Dependency Notes:

Semantic Notes:

Comments:

Notes: This segment is used for syntax purposes and compliance with the EDIFACT rules. The element 4233 is required to formally guarantee the existence of the segment PCI.

Example: Just comply with EDIFACT rules

PCI+Z01'

Data Element Summary

<u>Data Element</u>	<u>Component Element</u>	<u>Name</u>	<u>Base Attributes</u>			<u>User Attributes</u>
4233		MARKING INSTRUCTIONS CODE	C	1	an..3	O
		Code specifying instructions for marking.				
	Z01	Dummy				
		For syntax purposes only.				
C210		MARKS & LABELS	C	1		X
		Shipping marks on packages in free text; one to ten lines.				
	7102	Shipping marks description	M		an..35	X
		Free form description of the shipping marks.				
	7102	Shipping marks description	C		an..35	X
		Free form description of the shipping marks.				
	7102	Shipping marks description	C		an..35	X
		Free form description of the shipping marks.				
	7102	Shipping marks description	C		an..35	X
		Free form description of the shipping marks.				
	7102	Shipping marks description	C		an..35	X
		Free form description of the shipping marks.				
	7102	Shipping marks description	C		an..35	X
		Free form description of the shipping marks.				
	7102	Shipping marks description	C		an..35	X
		Free form description of the shipping marks.				
	7102	Shipping marks description	C		an..35	X
		Free form description of the shipping marks.				

	Free form description of the shipping marks.				
8169	FULL OR EMPTY INDICATOR CODE	C	1	an..3	X
C827	TYPE OF MARKING	C	1		X
	Specification of the type of marking that reflects the method that was used and the conventions adhered to for marking (e.g. of packages).				
7511	Marking type code	M		an..3	X
	Code specifying the type of marking.				
1131	Code list identification code	C		an..17	X
	Code identifying a user or association maintained code list.				
3055	Code list responsible agency code	C		an..3	X
	Code specifying the agency responsible for a code list.				

Segment: **GIN** Goods Identity Number
Position: 02720
Group: SG28-SG55-SG60
Level: 4
Usage: Conditional (Optional)
Max Use: 9999
Purpose: A segment to specify identifying numbers related to transport units, such as batch numbers, serial numbers, etc.

Dependency Notes:

Semantic Notes:

Comments:

Notes: Due to the possible size of a chassis identifier, both elements in composite C208 can be used.

Example: The vehicle chassis identifier is T8542KMO36658

GIN+VV+T8542KMO36658'

Data Element Summary

<u>Data Element</u>	<u>Component Element</u>	<u>Name</u>	<u>Base Attributes</u>	<u>User Attributes</u>
7405		OBJECT IDENTIFICATION CODE QUALIFIER Code qualifying the identification of an object.	M 1 an..3	M
	VV	Vehicle identity number Unique serial number assigned by the manufacturer that distinguishes one vehicle from another.		
C208		IDENTITY NUMBER RANGE Goods item identification numbers, start and end of consecutively numbered range.	M 1	M
	7402	Object identifier Code specifying the unique identity of an object.	M an..35	M
	7402	Object identifier Code specifying the unique identity of an object.	C an..35	O
C208		IDENTITY NUMBER RANGE Goods item identification numbers, start and end of consecutively numbered range.	C 1	X
	7402	Object identifier Code specifying the unique identity of an object.	M an..35	X
	7402	Object identifier Code specifying the unique identity of an object.	C an..35	X
C208		IDENTITY NUMBER RANGE Goods item identification numbers, start and end of consecutively numbered range.	C 1	X
	7402	Object identifier Code specifying the unique identity of an object.	M an..35	X
	7402	Object identifier Code specifying the unique identity of an object.	C an..35	X
C208		IDENTITY NUMBER RANGE Goods item identification numbers, start and end of consecutively numbered range.	C 1	X

	7402	Object identifier Code specifying the unique identity of an object.	M	an..35	X
	7402	Object identifier Code specifying the unique identity of an object.	C	an..35	X
C208		IDENTITY NUMBER RANGE Goods item identification numbers, start and end of consecutively numbered range.	C	1	X
	7402	Object identifier Code specifying the unique identity of an object.	M	an..35	X
	7402	Object identifier Code specifying the unique identity of an object.	C	an..35	X

Group: **GOR** Segment Group 62: Governmental Requirements

Position: 02790

Group: Segment Group 55 (Goods Item Details) Conditional (Optional)

Level: 3

Usage: Conditional (Dependent)

Max Use: 9

Purpose: A group of segments to identify customs and other governmental procedures and required documents relating to the goods item.

Notes: One usage of this group is related with group 59 (RFF). Its purpose is to provide the type and identification of supporting documents (documents that support the fulfill of a Declaration of Temporary Storage/Document of Transport, SG62:FTX:4451=AVD and SG62:FTX:4440=SD, the reference is in SG63:DOC) or previous documents (when there is an obligation to submit a Summary Entry Declaration for a shipment, the Main Reference number of the Summary Entry Declaration is indicated as previous document of a Declaration of Temporary Storage, SG63:DOC:1001=355), exclusively for Customs purposes and regulated by Customs requirements depending on the declarative situations.

Note that when a previous document is being referenced, then an identifier to a goods item in the previous document must be given (value in SG62:FTX first 4440, using SG62:FTX:4451=Z01).

Another usage is to provide a declaration type. These declarations depend on the authorisation type that is expressed in the goods item (see SG59 (RFF) notes). The situations of applicability are to identify a Cargo Manifest (SG59:RFF:1153=AFB, only in a future time), to identify a electronic transport document request/authorisation (SG59:RFF:1153=Z03) or to identify a authorised issuer status request/authorisation (SG59:RFF:1153=Z04). Data of this references is to be provided in group 59 (DOC)

Other usage is to provide additional references to other transport documents (SG62:FTX:4451=AVD and SG62:FTX:4440=AR, the reference is in SG63:DOC).

The GOR segment must be used for syntax purposes only, otherwise it is formally unable the usage of group 63 or segment FTX.

Segment Summary

	Pos.	Seg.	Name	Req.	Max.	Group:
	<u>No.</u>	<u>ID</u>	<u>Name</u>	<u>Des.</u>	<u>Use</u>	<u>Repeat</u>
M	02800	GOR	Governmental Requirements	M	1	
O	02840	FTX	Free Text	C	9	
	02850		Segment Group 63: Document/Message Details	C		9

Segment: **GOR** **Governmental Requirements**
Position: 02800 (Trigger Segment)
Group: SG28-SG55-SG62
Level: 3
Usage: Mandatory
Max Use: 1
Purpose: A segment to indicate applicable governmental procedures related to import, export and transport of the goods item.

Dependency Notes:

Semantic Notes:

Comments:

Notes: This segment is used for syntax purposes and compliance with the EDIFACT rules. The element 8323 is required to formally guarantee the existence of the segment GOR.

Example: Just comply with EDIFACT rules

GOR+Z01'

Data Element Summary

<u>Data Element</u>	<u>Component Element</u>	<u>Name</u>	<u>Base Attributes</u>			<u>User Attributes</u>
8323		TRANSPORT MOVEMENT CODE	C	1	an..3	R
		Code specifying the transport movement.				
		Z01 Dummy				
C232		GOVERNMENT ACTION	C	1		X
		Function: To indicate the requirement for a specific governmental action and/or procedure or which specific procedure is valid for a specific part of the transport and cross-border transactions. (Note the red portion as change in the segment description.).				
	9415	Government agency identification code	C		an..3	X
		Code identifying a government agency.				
	9411	Government involvement code	C		an..3	X
		Code indicating the requirement and status of governmental involvement.				
	9417	Government action code	C		an..3	X
		Code specifying a type of government action such as inspection, detention, fumigation, security.				
	9353	Government procedure code	C		an..3	X
		Code specifying a government procedure.				
C232		GOVERNMENT ACTION	C	1		X
		Function: To indicate the requirement for a specific governmental action and/or procedure or which specific procedure is valid for a specific part of the transport and cross-border transactions. (Note the red portion as change in the segment description.).				
	9415	Government agency identification code	C		an..3	X
		Code identifying a government agency.				
	9411	Government involvement code	C		an..3	X
		Code indicating the requirement and status of governmental involvement.				

	9417	Government action code	C	an..3	X
		Code specifying a type of government action such as inspection, detention, fumigation, security.			
	9353	Government procedure code	C	an..3	X
		Code specifying a government procedure.			
C232		GOVERNMENT ACTION	C	1	X
		Function: To indicate the requirement for a specific governmental action and/or procedure or which specific procedure is valid for a specific part of the transport and cross-border transactions. (Note the red portion as change in the segment description.).			
	9415	Government agency identification code	C	an..3	X
		Code identifying a government agency.			
	9411	Government involvement code	C	an..3	X
		Code indicating the requirement and status of governmental involvement.			
	9417	Government action code	C	an..3	X
		Code specifying a type of government action such as inspection, detention, fumigation, security.			
	9353	Government procedure code	C	an..3	X
		Code specifying a government procedure.			
C232		GOVERNMENT ACTION	C	1	X
		Function: To indicate the requirement for a specific governmental action and/or procedure or which specific procedure is valid for a specific part of the transport and cross-border transactions. (Note the red portion as change in the segment description.).			
	9415	Government agency identification code	C	an..3	X
		Code identifying a government agency.			
	9411	Government involvement code	C	an..3	X
		Code indicating the requirement and status of governmental involvement.			
	9417	Government action code	C	an..3	X
		Code specifying a type of government action such as inspection, detention, fumigation, security.			
	9353	Government procedure code	C	an..3	X
		Code specifying a government procedure.			

Segment: **FTX** Free Text
Position: 02840
Group: SG28-SG55-SG62
Level: 4
Usage: Conditional (Optional)
Max Use: 9
Purpose: A segment to provide additional governmental requirements information for the goods item.

Dependency Notes:

Semantic Notes:

Comments:

Notes: This segment is used to signal if the type and identification in SG63:DOC corresponds to a supporting document or an additional reference.

And it is also used to indicate the identifier of a goods item present in a previous document.

Example: The following reference corresponds to a supporting document.

FTX+AVD+++SD'

Example: The goods item identifier in the previous document is 3598

FTX+Z01+++3598'

Data Element Summary

<u>Data Element</u>	<u>Component Element</u>	<u>Name</u>	<u>Base Attributes</u>			<u>User Attributes</u>
4451		TEXT SUBJECT CODE QUALIFIER	M	1	an..3	M
		Code qualifying the subject of the text.				
	AVD	Customs Valuation Information				
		Information provided in this category will be used by the trader to make certain declarations in relation to Customs Valuation.				
		When this qualifier is used then the first element 4441 has information about the purpose of the document identified in group 63.				
	Z01	Goods item identifier				
		Identification given to a goods item in a transport document.				
		Use this qualifier to provide the goods item identifier given to a goods item in a previous document (SG37:DOC:1001 = 355).				
4453		FREE TEXT FUNCTION CODE	C	1	an..3	X
C107		TEXT REFERENCE	C	1		X
		Coded reference to a standard text and its source.				
	4441	Free text description code	M		an..17	X
		Code specifying free form text.				
	1131	Code list identification code	C		an..17	X
	3055	Code list responsible agency code	C		an..3	X
C108		TEXT LITERAL	C	1		O

	Free text; one to five lines.			
4440	Free text	M	an..512	M
	Free form text.			
	AR			Additional References
				The data in SG63:DOC refers an additional reference.
	SD			Supporting Document
				The data in SG63:DOC refers a supporting document.
4440	Free text	C	an..512	X
4440	Free text	C	an..512	X
4440	Free text	C	an..512	X
4440	Free text	C	an..512	X
3453	LANGUAGE NAME CODE	C	1 an..3	X
4447	FREE TEXT FORMAT CODE	C	1 an..3	X

Group: **DOC** Segment Group 63: Document/Message Details
Position: 02850
Group: Segment Group 62 (Governmental Requirements) Conditional (Dependent)
Level: 4
Usage: Conditional (Optional)
Max Use: 9
Purpose: A group of segments to specify required documents by government for the goods item.
Notes: This group is used to provide additional references, identification of supporting documents, the identification of previous documents related with this specific goods item, and the identification of declarations types related with Customs' authorisations.

So it is to used only when SG59:RFF:1153 in {AFB, Z02, Z03, Z04} and SG59:FTX:4451=AVD and SG59:FTX:4440=SD, or SG59:FTX:4451=AVD and SG59:FTX:4440=AR, or SG59:FTX:4451=Z01.

Segment Summary

	Pos.	Seg.	Name	Req.	Max.	Group:
	<u>No.</u>	<u>ID</u>		<u>Des.</u>	<u>Use</u>	<u>Repeat</u>
M	02860	DOC	Document/Message Details	M	1	

Segment: **DOC** Document/Message Details
Position: 02860 (Trigger Segment)
Group: SG28-SG55-SG62-SG63
Level: 4
Usage: Mandatory
Max Use: 1
Purpose: A segment to indicate a document required by government.

Dependency Notes:

Semantic Notes:

Comments:

Notes:

Example: The supporting document is a House Bill of Lading with identifier 985KJH
DOC+714+985KJH'
Example: The declaration tye related with the mentioned authorisation is a T2F
DOC+581'
Example: The previous document is identified by MLOP5842
DOC+355+MLOP5842'

Data Element Summary

<u>Data Element</u>	<u>Component Element</u>	<u>Name</u>	<u>Base Attributes</u>	<u>User Attributes</u>
C002		DOCUMENT/MESSAGE NAME	M 1	M
		Identification of a type of document/message by code or name. Code preferred.		
	1001	Document name code	C an..3	R
		Code specifying the document name.		
		355		Customs summary declaration without commercial detail, alternate Alternate Customs declaration summary without any commercial transaction details.
				Use this qualifier to identify a previous document related to the goods expressed in this document, identifying the applicable goods in SG62:FTX, first occurrence of DE:4440, having SG62:FTX:4451=Z01.
		578		EU Customs declaration for External Community Transit (T1) Customs declaration for goods under the external Community/common transit procedure. This applies to "non-Community goods" ("T1" under EU legislation and EC- EFTA "Transit Convention"). This qualifier states the identified document is related with usage of electronic transport document request/authorisation (SG59:RFF:1153=Z03).
		579		EU Customs declaration for internal Community Transit (T2) Customs declaration for goods under the internal Community/common transit procedure. This applies to "Community goods" ("T2" under EU legislation and EC-EFTA "Transit Convention"). This qualifier states the identified document is related with

		usage of electronic transport document request/authorisation (SG59:RFF:1153=Z03).
581	EU Customs declaration for non-fiscal area internal Community Transit (T2F)	Declaration for goods under the internal Community transit procedure in the context of trade between the "VAT" territory of EU Member States and EU territories where the VAT rules do not apply, such as Canary islands, some French overseas territories, the Channel islands and the Aaland islands, and between those territories. ("T2F" under EU Legislation).
		This qualifier states the identified document is related with usage of electronic transport document request/authorisation (SG59:RFF:1153=Z03).
583	EU Customs declaration for mixed consignments (T)	Customs declaration for goods under the Community/common transit procedure for mixed consignments (i.e. consignments that comprise goods of different statuses, like "T1" and "T2") ("T" under EU Legislation).
		This qualifier states the identified document is related with usage of electronic transport document request/authorisation (SG59:RFF:1153=Z03).
584	EU Document for establishing the Community status of goods (T2L)	Form establishing the Community status of goods ("T2L" under EU Legislation).
		This qualifier states the identified document is related with cargo manifest (SG59:RFF:1153=AFB).
585	EU Document for establishing the Community status of goods for certain fiscal purposes (T2LF)	Form establishing the Community status of goods in the context of trade between the "VAT" territory of EU Member States and EU territories where the VAT rules do not apply, such as Canary islands, some French overseas territories, the Channel islands and the Aaland islands, and between those territories ("T2LF" under EU Legislation).
		This qualifier states the identified document is related with cargo manifest (SG59:RFF:1153=AFB).
703	House waybill	The document made out by an agent/consolidator which evidences the contract between the shipper and the agent/consolidator for the arrangement of carriage of goods.
		The value in DE:1004 is the identification of a business transport document.
704	Master bill of lading	A bill of lading issued by the master of a vessel (in actuality the owner or charterer of the vessel). It could cover a number of house bills.
		The value in DE:1004 is the identification of a business transport document.
705	Bill of lading	Negotiable document/message which evidences a contract of carriage by sea and the taking over or loading of goods by carrier, and by which carrier undertakes to deliver goods

against surrender of the document. A provision in the document that goods are to be delivered to the order of a named person, or to order, or to bearer, constitutes such an undertaking.

The value in DE:1004 is the identification of a business transport document.

714 House bill of lading
The bill of lading issued not by the carrier but by the freight forwarder/consolidator known by the carrier.

The value in DE:1004 is the identification of a business transport document.

977 NATO transit document
Customs transit document for the carriage of shipments of the NATO armed forces under Customs supervision.

The value in DE:1004 is the identification of a business transport document.

Z01 EU Customs declaration of goods not subject to a transit regime (C)

This qualifier states the identified document is related with usage of electronic transport document request/authorisation (SG59:RFF:1153=Z03) or states the identified document is related with authorised issuer status request/authorisation (SG59:RFF:1153=Z04).

Z02 EU Customs declaration for the applicability of some simplifications to goods under a transit regime (TD)

This qualifier states the identified document is related with usage of electronic transport document request/authorisation (SG59:RFF:1153=Z03).

Z03 EU Customs declaration goods for export to establish a transit regime (X)

This qualifier states the identified document is related with usage of electronic transport document request/authorisation (SG59:RFF:1153=Z03).

Z04 EU Customs declaration of goods to/from non-fiscal areas (F)

This qualifier states the identified document is related with authorised issuer status request/authorisation (SG59:RFF:1153=Z04).

Z05 EU Customs declaration of other goods (N)

This qualifier states the identified document is related with authorised issuer status request/authorisation (SG59:RFF:1153=Z04).

C503	1131	Code list identification code	C	an..17	X
	3055	Code list responsible agency code	C	an..3	X
	1000	Document name	C	an..35	X
		DOCUMENT/MESSAGE DETAILS	C	1	D
		Identification of document/message by number, status, source and/or language. Only used if SG62:FTX:4451=AVD.			
	1004	Document identifier	C	an..70	R
		To identify a document.			
	1373	Document status code	C	an..3	X
	1366	Document source description	C	an..70	X

3453	Language name code	C	an..3	X
1056	Version identifier	C	an..9	X
1060	Revision identifier	C	an..6	X
3153	COMMUNICATION MEDIUM TYPE CODE	C	1 an..3	X
1220	DOCUMENT COPIES REQUIRED QUANTITY	C	1 n..2	X
1218	DOCUMENT ORIGINALS REQUIRED QUANTITY	C	1 n..2	X

Group: **SGP** Segment Group 66: Split Goods Placement
Position: 02930
Group: Segment Group 55 (Goods Item Details) Conditional (Optional)
Level: 3
Usage: Conditional (Dependent)
Max Use: 999
Purpose: A group of segments to specify the distribution of a goods item among the transport equipment.

Notes: This group depends of the existence of goods loaded into a transport equipment.

This segment group identifies the transport equipment in which goods are loaded. Details on transport equipment are present in the segment group 75 (EQD). Example: a shipper sends 45 metric tons of product XPTO distributed as follows: 20 in equipment A and 25 in equipment B.

When displaying the number of volumes/packages it is necessary to have in mind that the total number of volumes/packages of the goods item must equal the sum of the loaded volumes on each equipment.

Using this group is based on the knowledge of what goods are in which equipment. Therefore it depends on the knowledge of such information. Thus when using group 66 (SGP), each equipment referenced will also be identified and described in segment group 75 (EQD).

For bulk cargo, they are treated as a whole, so they will not be split. This group is not be needed.

O conteúdo deste grupo deve ser tratado em paralelo e conjuntamente com o grupo 75 para determinar em que ponto das estrutura da MMI os dados são colocados. Ou seja, se são dados que constarão do

Transport Documents : Equipments And Seals : Transport Equipment

ou

Transport Documents : Goods Items : Equipments and Seals : Transport Equipment.

Notar que no caso dos dados serem colocados em Transport Documents : Equipments And Seals : Transport Equipment, há do grupo 66 e do grupo 67 que não serão mapeados. Ver notas respectivas.

Segment Summary

	Pos.	Seg.		Req.	Max.	Group:
	<u>No.</u>	<u>ID</u>	<u>Name</u>	<u>Des.</u>	<u>Use</u>	<u>Repeat</u>
M	02940	SGP	Split Goods Placement	M	1	
	02960		Segment Group 67: Measurements	C		1

Segment: **SGP** Split Goods Placement
Position: 02940 (Trigger Segment)
Group: SG28-SG55-SG66
Level: 3
Usage: Mandatory
Max Use: 1
Purpose: A segment to identify the equipment in which goods are transported.

Dependency Notes:

Semantic Notes:

Comments:

Notes: Example: Container CGTU 200311/5 carries 10 volumes of the goods

SGP+CGTU2003115+10'

Data Element Summary

<u>Data Element</u>	<u>Component Element</u>	<u>Name</u>	<u>Base Attributes</u>		<u>User Attributes</u>
C237		EQUIPMENT IDENTIFICATION Marks (letters/numbers) identifying equipment.	M	1	M
	8260	Equipment identifier To identify equipment.	C	an..17	R
	1131	Code list identification code	C	an..17	X
	3055	Code list responsible agency code	C	an..3	X
	3207	Country identifier	C	an..3	X
7224		PACKAGE QUANTITY To specify the number of packages.	C	1 n..8	R

Group: **MEA** Segment Group 67: Measurements
Position: 02960
Group: Segment Group 66 (Split Goods Placement) Conditional (Dependent)
Level: 4
Usage: Conditional (Required)
Max Use: 1
Purpose: A group of segments to identify measurements.
Notes: This group in this part of the structure is to provide measurement only of the goods actually loaded in the equipment referenced in the SGP segment.

Segment Summary

	Pos.	Seg.		Req.	Max.	Group:
	<u>No.</u>	<u>ID</u>	<u>Name</u>	<u>Des.</u>	<u>Use</u>	<u>Repeat</u>
M	02970	MEA	Measurements	M	1	

Segment: **MEA** Measurements
Position: 02970 (Trigger Segment)
Group: SG28-SG55-SG66-SG67
Level: 4
Usage: Mandatory
Max Use: 1
Purpose: A segment to specify measurements of that portion of the goods item in the equipment.

Dependency Notes:

Semantic Notes:

Comments:

Notes:

Although the element 6314 allows 18 digits, only a maximum of 16 digits can be used. In case decimal digits need to be send, then a maxim of 6 are allowed and the amount needed must be discounted from the integer part of the number, in order to keep the maximum of 16 digits. The decimal mark can be the full stop (.) or comma (,) and don't count for the number size according to EDIFACT rules.

Example: The goods item in the transport equipment has a gross weight of 15.570,00 Kg

MEA+AAE+AAB+KGM:15570,00'

Data Element Summary

<u>Data Element</u>	<u>Component Element</u>	<u>Name</u>	<u>Base Attributes</u>	<u>User Attributes</u>
6311		MEASUREMENT PURPOSE CODE QUALIFIER	M 1 an..3	M
		Code qualifying the purpose of the measurement. AAE Measurement [6314] To specify the value of a measurement.		
C502		MEASUREMENT DETAILS	C 1	R
		Identification of measurement type.		
	6313	Measured attribute code	C an..3	R
		Code specifying the attribute measured. AAB Goods item gross weight [6292] Weight (mass) of goods including packing but excluding the carrier's equipment.		
	6321	Measurement significance code	C an..3	X
	6155	Non-discrete measurement name code	C an..17	X
	6154	Non-discrete measurement name	C an..70	X
C174		VALUE/RANGE	C 1	R
		Measurement value and relevant minimum and maximum values of the measurement range.		
	6411	Measurement unit code	C an..8	R
		Code specifying the unit of measurement. KGM Kilogram		
	6314	Measure	C an..18	R
		To specify the value of a measurement.		
	6162	Range minimum quantity	C n..18	X

	6152	Range maximum quantity	C	n..18	X
	6432	Significant digits quantity	C	n..2	X
7383		SURFACE OR LAYER CODE	C	1 an..3	X

Group: **DGS** Segment Group 70: Dangerous Goods
Position: 03120
Group: Segment Group 55 (Goods Item Details) Conditional (Optional)
Level: 3
Usage: Conditional (Optional)
Max Use: 99
Purpose: A group of segments to specify dangerous goods details related to the goods item. One goods item may be in different dangerous goods classes.
Notes: This group allows the declaration of dangerous goods.

Segment Summary

	Pos.	Seg.		Req.	Max.	Group:
	<u>No.</u>	<u>ID</u>	<u>Name</u>	<u>Des.</u>	<u>Use</u>	<u>Repeat</u>
M	03130	DGS	Dangerous Goods	M	1	

Segment: **DGS** Dangerous Goods
Position: 03130 (Trigger Segment)
Group: SG28-SG55-SG70
Level: 3
Usage: Mandatory
Max Use: 1
Purpose: A segment to indicate the class of dangerous goods, packing group, etc.

Dependency Notes:

Semantic Notes:

Comments:

Notes: Dangerous goods should be identified by UNDG code.

Example: The goods are PAINT (including paint, lacquer, enamel, stain, shellac, varnish, polish, liquid filler and liquid lacquer base) or PAINT RELATED MATERIAL (including paint thinning or reducing compound)

DGS+++3066'

Data Element Summary

<u>Data Element</u>	<u>Component Element</u>	<u>Name</u>	<u>Base Attributes</u>			<u>User Attributes</u>
8273		DANGEROUS GOODS REGULATIONS CODE	C	1	an..3	X
C205		HAZARD CODE	C	1		X
		The identification of the dangerous goods in code.				
	8351	Hazard identification code	M		an..7	X
		Code identifying a hazard.				
	8078	Additional hazard classification identifier	C		an..7	X
		To identify an additional hazard classification.				
	8092	Hazard code version identifier	C		an..10	X
		To identify the version number of a hazard code.				
C234		UNDG INFORMATION	C	1		R
		Information on dangerous goods, taken from the United Nations Dangerous Goods classification.				
	7124	United Nations Dangerous Goods (UNDG) identifier	C		n4	R
		The unique serial number assigned within the United Nations to substances and articles contained in a list of the dangerous goods most commonly carried.				
	7088	Dangerous goods flashpoint description	C		an..8	X
C223		DANGEROUS GOODS SHIPMENT FLASHPOINT	C	1		X
		Temperature at which a vapor can be ignited as per ISO 1523/73.				
	7106	Shipment flashpoint degree	C		n3	X
		To specify the value of the flashpoint of a shipment.				
	6411	Measurement unit code	C		an..8	X
		Code specifying the unit of measurement.				
8339		PACKAGING DANGER LEVEL CODE	C	1	an..3	X
8364		EMERGENCY PROCEDURE FOR SHIPS	C	1	an..8	X

IDENTIFIER					
8410	HAZARD MEDICAL FIRST AID GUIDE IDENTIFIER	C	1	an..4	X
8126	TRANSPORT EMERGENCY CARD IDENTIFIER	C	1	an..10	X
C235	HAZARD IDENTIFICATION PLACARD DETAILS	C	1		X
These numbers appear on the hazard identification placard required on the means of transport.					
8158	Orange hazard placard upper part identifier	C		an..4	X
To specify the identity number for the upper part of the orange hazard placard required on the means of transport.					
8186	Orange hazard placard lower part identifier	C		an4	X
To specify the identity number for the lower part of the orange hazard placard required on the means of transport.					
C236	DANGEROUS GOODS LABEL	C	1		X
Markings identifying the type of hazardous goods and similar information.					
8246	Dangerous goods marking identifier	C		an..4	X
To identify the marking of dangerous goods.					
8246	Dangerous goods marking identifier	C		an..4	X
To identify the marking of dangerous goods.					
8246	Dangerous goods marking identifier	C		an..4	X
To identify the marking of dangerous goods.					
8246	Dangerous goods marking identifier	C		an..4	X
To identify the marking of dangerous goods.					
8255	PACKING INSTRUCTION TYPE CODE	C	1	an..3	X
8179	TRANSPORT MEANS DESCRIPTION CODE	C	1	an..8	X
8211	HAZARDOUS CARGO TRANSPORT AUTHORISATION CODE	C	1	an..3	X
C289	TUNNEL RESTRICTION	C	1		X
To specify a restriction for transport through tunnels.					
8461	Tunnel Restriction Code	C		an..6	X
A code indicating a restriction for transport through tunnels.					
1131	Code list identification code	C		an..17	X
Code identifying a user or association maintained code list.					
3055	Code list responsible agency code	C		an..3	X
Code specifying the agency responsible for a code list.					

Group: **EQD** Segment Group 75: Equipment Details
Position: 03260
Group: Segment Group 28 (Consignment Information) Conditional (Dependent)
Level: 2
Usage: Conditional (Optional)
Max Use: 999
Purpose: A group of segments to specify equipment in which goods are transported.
Notes: This group is to identify the transport equipment where goods in the consignment are placed.

Note that if the transport equipment has seals associated to it, they must be declared in the segment SEL in this group.

Regard that the sum of the number of different seals in all equipments in the consignment must be equal to the number indicated in SG28:CNT:6066 when element 6069 in that segment has qualifier 61.

O conteúdo deste grupo deve ser tratado em paralelo e conjuntamente com o grupo 66 para determinar em que ponto das estrutura da MMI os dados são colocados. Ou seja, se são dados que constarão do

Transport Documents : Equipments And Seals : Transport Equipment

ou

Transport Documents : Goods Items : Equipments and Seals : Transport Equipment.

Segment Summary

	Pos.	Seg.		Req.	Max.	Group:
	<u>No.</u>	<u>ID</u>	<u>Name</u>	<u>Des.</u>	<u>Use</u>	<u>Repeat</u>
M	03270	EQD	Equipment Details	M	1	
R	03300	MEA	Measurements	C	1	
O	03320	SEL	Seal Number	C	99	

Segment: **EQD** Equipment Details
Position: 03270 (Trigger Segment)
Group: SG28-SG75
Level: 2
Usage: Mandatory
Max Use: 1
Purpose: A segment to specify equipment, and equipment size and type used in the transport.

Dependency Notes:

Semantic Notes:

Comments:

Notes:

This segment is to identify the transport equipment, its size/type and if it is full or empty.

If it is full, its presence in one occurrence of group 52 will be checked, given an error if absent.

If it is empty, its presence in one occurrence of group 52 will be checked, given an error if present.

If it is other than an ISO container then DE:8155 shall have the proper value from the standard code list associated with this element (displayed in the element).

If it is an ISO container then DE:8155 shall have the ISO type according to standard ISO 6346. If this code is unknown then place the proper value from standard code list associated with this element.

Example: Container CGTU 200311/5, 20 ft, full

EQD+CN+CGTU2003115+21::6+++5'

Example: Container GSTU 000029/0, 40 ft General purpose (ISO 40GP), empty

EQD+CN+GSTU0000290+40GP::5+++4'

Example: Trailer Z-53791, full

EQD+TE+Z53791++++5'

Data Element Summary

<u>Data Element</u>	<u>Component Element</u>	<u>Name</u>	<u>Base Attributes</u>	<u>User Attributes</u>
8053		EQUIPMENT TYPE CODE QUALIFIER	M 1 an..3	M

Code qualifying a type of equipment.

CN Container

Equipment item as defined by ISO for transport. It must be of:
 A) permanent character, strong enough for repeated use; B) designed to facilitate the carriage of goods, by one or more modes of transport, without intermediate reloading; C) fitted with devices for its ready handling, particularly.

TE Trailer

A vehicle without motive power, designed for the carriage of cargo and to be towed by a motor vehicle.

C237	EQUIPMENT IDENTIFICATION	C	1	R
	Marks (letters/numbers) identifying equipment.			
8260	Equipment identifier	C	an..17	O
	To identify equipment.			
1131	Code list identification code	C	an..17	X
3055	Code list responsible agency code	C	an..3	X
3207	Country identifier	C	an..3	X
C224	EQUIPMENT SIZE AND TYPE	C	1	D
	Code and or name identifying size and type of equipment. Code preferred.			
	This composite is used only when the equipment is a container (EQD:8053 = CN).			
8155	Equipment size and type description code	C	an..10	R
	Code specifying the size and type of equipment.			
	In case of ISO container equipment (DE:8053=CN) and if its ISO type is known then send the Size/Type information according to ISO 6346 (2nd and 3rd edition).			
	Otherwise use UN/EDIFACT code list for Data Element 8155.			
	Refer to D.21B Data Element Dictionary for acceptable code values.			
1131	Code list identification code	C	an..17	X
3055	Code list responsible agency code	C	an..3	R
	Code specifying the agency responsible for a code list.			
	5	ISO (International Organization for Standardization)		
		International Organization of Standardization.		
		Use this code when DE:8155 contains the ISO 6346 code.		
	6	UN/ECE (United Nations - Economic Commission for Europe)		
		United Nations Economic Commission for Europe.		
		Use this code when DE:8155 contains a code from the list associated with the Data Element.		
8154	Equipment size and type description	C	an..35	X
8077	EQUIPMENT SUPPLIER CODE	C	1 an..3	X
8249	EQUIPMENT STATUS CODE	C	1 an..3	X
8169	FULL OR EMPTY INDICATOR CODE	C	1 an..3	R
	Code indicating whether an object is full or empty.			
	4	Empty		
		Indicates that the object is empty.		
	5	Full		
		Indicates that the object is full.		
4233	MARKING INSTRUCTIONS CODE	C	1 an..3	X

Segment: **MEA** Measurements
Position: 03300
Group: SG28-SG75
Level: 3
Usage: Conditional (Required)
Max Use: 1
Purpose: A segment to specify measurements, other than dimensions, associated with the equipment, such as weight.

Dependency Notes:

Semantic Notes:

Comments:

Notes: Although the element 6314 allows 18 digits, only a maximum of 16 digits can be used. In case decimal digits need to be send, then a maxim of 6 are allowed and the amount needed must be discounted from the integer part of the number, in order to keep the maximum of 16 digits. The decimal mark can be the full stop (.) or comma (,) and don't count for the number size according to EDIFACT rules.

Example: Container with tare 2139 Kg

MEA+WT+T+KGM:2139'

Data Element Summary

<u>Data Element</u>	<u>Component Element</u>	<u>Name</u>	<u>Base Attributes</u>	<u>User Attributes</u>
6311		MEASUREMENT PURPOSE CODE QUALIFIER	M 1 an..3	M
		Code qualifying the purpose of the measurement.		
	WT	Weights		
		The measured attribute is weight.		
C502		MEASUREMENT DETAILS	C 1	R
		Identification of measurement type.		
	6313	Measured attribute code	C an..3	R
		Code specifying the attribute measured.		
	T	Tare weight		
		(6052) (6156) Weight excluding goods and loose accessories.		
	6321	Measurement significance code	C an..3	X
	6155	Non-discrete measurement name code	C an..17	X
	6154	Non-discrete measurement name	C an..70	X
C174		VALUE/RANGE	C 1	R
		Measurement value and relevant minimum and maximum values of the measurement range.		
	6411	Measurement unit code	C an..8	R
		Code specifying the unit of measurement.		
	KGM	Kilogram		
	6314	Measure	C an..18	R
		To specify the value of a measurement.		
	6162	Range minimum quantity	C n..18	X
	6152	Range maximum quantity	C n..18	X

	6432	Significant digits quantity	C	n..2	X
7383		SURFACE OR LAYER CODE	C	1 an..3	X

Segment: **SEL** Seal Number
Position: 03320
Group: SG28-SG75
Level: 3
Usage: Conditional (Optional)
Max Use: 99
Purpose: A segment to identify seal and seal issuer associated with the equipment.

Dependency Notes:

Semantic Notes:

Comments:

Notes: This segment is to declare the seals associated with the transport unit. It must be used when the equipment is full (EQD:8169=5).

Example: Seal number 9805120

SEL+9805120'

Data Element Summary

<u>Data Element</u>	<u>Component Element</u>	<u>Name</u>	<u>Base Attributes</u>		<u>User Attributes</u>
9308		TRANSPORT UNIT SEAL IDENTIFIER	C	1 an..35	R
		The identification number of a seal affixed to a transport unit.			
C215		SEAL ISSUER	C	1	X
		Identification of the issuer of a seal on equipment either by code or by name.			
	9303	Sealing party name code	C	an..3	X
		Code specifying the name of the sealing party.			
	1131	Code list identification code	C	an..17	X
	3055	Code list responsible agency code	C	an..3	X
	9302	Sealing party name	C	an..35	X
4517		SEAL CONDITION CODE	C	1 an..3	X
C208		IDENTITY NUMBER RANGE	C	1	X
		Goods item identification numbers, start and end of consecutively numbered range.			
	7402	Object identifier	M	an..35	X
		Code specifying the unique identity of an object.			
	7402	Object identifier	C	an..35	X
		Code specifying the unique identity of an object.			
4525		SEAL TYPE CODE	C	1 an..3	X

Segment: **UNT** Message Trailer
Position: 03590
Group:
Level: 0
Usage: Mandatory
Max Use: 1
Purpose: A service segment ending a message, giving the total number of segments in the message (including the UNH & UNT) and the control reference number of the message.

Dependency Notes:

Semantic Notes:

Comments:

Notes: Example: 325 sent segments, refernce 1357924680

UNT+325+1357924680'

Data Element Summary

<u>Data Element</u>	<u>Component Element</u>	<u>Name</u>	<u>Base Attributes</u>			<u>User Attributes</u>
0074		NUMBER OF SEGMENTS IN A MESSAGE Control count of number of segments in a message.	M	1	n..6	M
0062		MESSAGE REFERENCE NUMBER Unique message reference assigned by the sender.	M	1	an..14	M