

Autoridade Tributária e Aduaneira

SDS - AIR TRANSPORT

XML MESSAGES

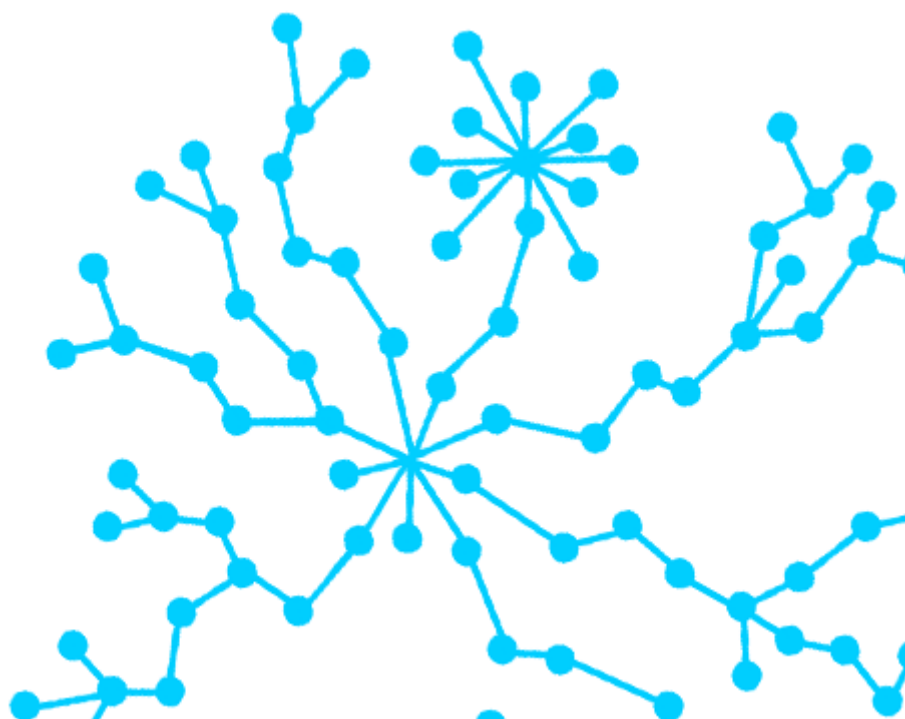
IMPLEMENTATION GUIDE

SDS – Integrated System of Means of Transport and
Summary Declarations – Air Transport

Ref. Indra AJP044

Ref. Qren 09202

DATE: 27/06/2018 VERSION: 1.9.2



DOCUMENT CONTROL PAGE



DOCUMENT

Title: DESENHO TÉCNICO – SDS – Air Transport – GUIA XML	File Name: AJP044-003-DAS-016-Desenho_Tecnico_ViaAerea_Guia_XML_EN.doc
Code: AJP044-003-DAS-016	Logic Support: MS Word 2003
Date: 27/06/2018	Physic Location:
Version: 0192	

CHANGE REGISTRY

Version	Pages	Change Reason
1.0	All	Initial resumed version
1.1	All	Complete version
1.2	All	Complete and reviewed
1.3	All	Document review
1.4	All	Document review
1.5	All	Document review
1.6	All	Document review
1.7	All	Document review
1.8	All	Document review
1.8.1	22	New field added
1.9	39,40,41	New address field added to goods items parties.
1.9.1	41	New ReliefFromDuty field added and CustomsValue updated
1.9.2	1, 4	Update on all references of Autoridade Tributária e Aduaneira

DOCUMENT DISTRIBUTION

Name	Area
AT project team	AT
Indra project team	Indra

DOCUMENT CONTROL

PREPARED	REVIEW	APPROVED	ACCEPTED
Marcelo Porto 27/06/2018	Marcelo Porto 27/06/2018	Nuno Borges 27/06/2018	

Fill name, date and signature or electronic trail

Only for customers

Table of Contents

1	Introduction	4
1.1	Purpose	4
1.2	Scope.....	4
2	Definitions and Abbreviations	5
2.1	Abbreviations	5
3	Messages exchanged with SDS Air Transport	6
3.1	Transport Process Messages	8
3.1.1	AirTransportInformation – Customs declaration	8
3.1.2	AirTransportStatus – Information about the customs reference state.....	9
3.2	Goods Process Messages	10
3.2.1	AirManifestInformation – Manifest	10
3.2.2	AirManifestResponse – Manifest Response.....	11
4	XML Messages Format Rules	12
4.1	Version.....	12
4.2	Encoding	12
4.3	Data type and Notation	12
4.4	Message Structure	13
4.4.1	AirTransportInformation.....	13
4.4.2	AirTransportStatus	27
4.4.3	AirManifestInformation	32
4.4.4	AirManifestResponse	44

1 Introduction

1.1 Purpose

This guide contains the general definitions of electronic exchange of information within the SDS Air Transport, using messages in XML format.

The recipients of this guide are the Economic Operators authorized by AT to communicate electronically with Customs Authorities, using the Channel XML / Internet.

Economic Operators should send the messages through the Customs web site (<https://aduaneiro.portaldasfinancas.gov.pt/>).

1.2 Scope

This document identifies the available messages for communication between the SDS Air Transport and Economic Operators in Transport Process and Goods Process. For each message are identified the objectives, the information flows, the rules for the XML formatting and the types of data possible.

2 Definitions and Abbreviations

2.1 Abbreviations

SDS – Integrated System of Means of Transport and Summary Declarations

XML – eXtensible Markup Language

3 Messages exchanged with SDS Air Transport

This chapter specifies the messages used in the dialogue between the Economic Operator and SDS Air Transport, for treatment of the data declaration related with the Transport Process and the Goods Process.

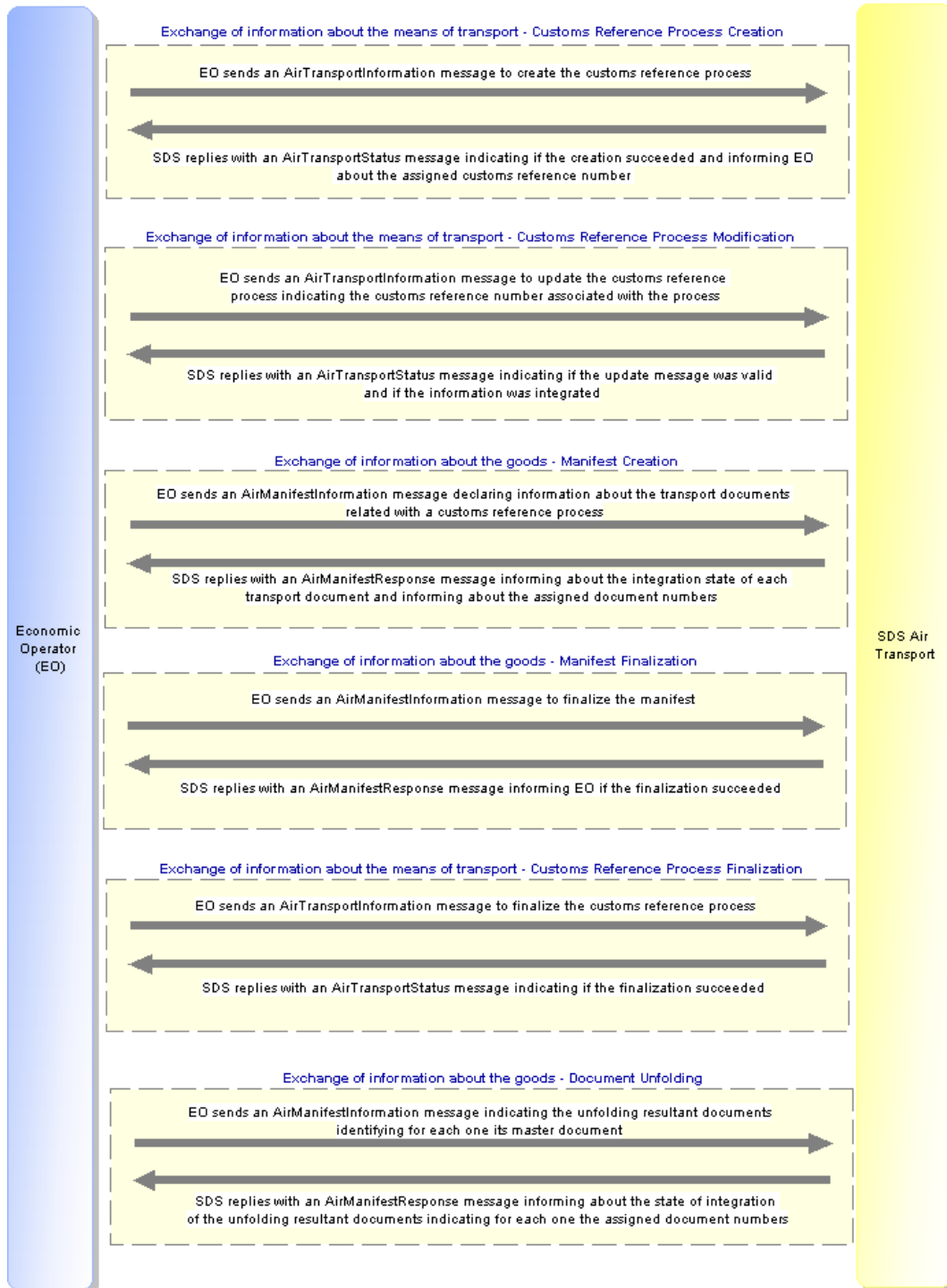


Image 1 – Exchange of messages between SDS Air Transport and Economic Operators

Exchange of information about the means of transport - Customs Reference Process Creation:

The economic operator sends an AirTransportInformation message to the SDS providing the minimum required data for the creation of a Custom Reference Process. SDS sends back an AirTransportStatus to inform whether the creation was successful (in which case, the response includes the number assigned to the Custom Reference Process) or if it failed (in which case, all validation errors are included in the response).

Exchange of information about the means of transport - Customs Reference Process Modification:

The economic operator sends an AirTransportInformation message to the SDS providing new data to amend a Custom Reference Process. SDS responds with an AirTransportStatus message where it is stated whether the amendment was successful or not (in which case, all validation errors are included in the response).

Exchange of information about the goods - Manifest Creation:

The economic operator sends an AirManifestInformation message to the SDS declaring transport documents with respective goods items associated with a Custom Reference Process (which is specified in the message). SDS sends back an AirManifestResponse message to report which documents were created successfully (the response includes the generated numbers assigned to each of them) and those who weren't (in which case, all validation errors are included in the reply).

Exchange of information about the goods - Manifest Finalization:

The economic operator sends an AirManifestInformation message to the SDS indicating his intention to finalize a manifest. SDS responds with an AirManifestResponse message with information whether the finalization was successful or not (in which case all validation errors are included in the response).

Exchange of information about the means of transport - Customs Reference Process Finalization:

The economic operator sends an AirTransportInformation message to the SDS indicating his intention to finalize a Custom Reference Process. SDS responds with an AirTransportStatus message with information whether the finalization was successful or not (in which case all validation errors are included in the response).

Exchange of information about the goods - Document Unfolding:

The economic operator sends an *AirManifestInformation* message to the SDS declaring the minimum required data for the creation of unfolding resultant documents, specifying, for each one of them, the master document. SDS sends back an *AirManifestResponse* message where it states which documents were created successfully (the response includes the numbers assigned to each of them) and those who weren't (all validation errors are included in the reply).

The following table describes the available messages for communication between the two entities.

Messages	
<i>AirTransportInformation</i>	Message used by the Economic Operator to declare information about the customs reference.
<i>AirTransportStatus</i>	Message sent by SDS Air Transport to inform Economic Operators about the customs reference state. This message acts as a response of the <i>AirTransportInformation</i> message.
<i>AirManifestInformation</i>	Message sent by Economic Operator to declare data related with the transit, load or unload of goods.
<i>AirManifestResponse</i>	Message sent by SDS Air Transport as a response to <i>AirManifestInformation</i> message, sent by Economic Operators.

3.1 Transport Process Messages

3.1.1 *AirTransportInformation* – Customs declaration

The *AirTransportInformation* message main function is to send data associated with Transport Process.

The origin point of this message is the Economic Operator and the primary recipient is the SDS Air Transport.

The following table identifies the operations that the Economic Operator may perform with this message:

Operation	Objective
Customs reference creation	Send required information for the customs reference creation.
Customs reference change	Send data changes of a customs reference that already exists.
Customs reference creation and finalization	Send required information for the customs reference creation, giving the indication to finalize it.
Customs reference change and finalization	Send data changes of a customs reference that already exists, giving the indication to finalize it.
Customs reference rectification	Send data rectification of a customs reference that already exists and that is finalized.

For all the operations above is used the same message, the only difference is the message content which changes according the operation to perform.

3.1.2 AirTransportSatus – Information about the customs reference state

This message is used to send informative messages about the customs reference state, it's also used as response to the *AirTransportInformation* message.

The SDS Air Transport is the message sender and the recipient is the Economic Operator.

The following table identifies the situations in which the SDS Air Transport can send this message:

Operation	Objective
Customs reference declaration acceptance	Sent to inform Economic Operator that the integration of the customs reference data, declared with the <i>AirTransportInformation</i> message, was succeed. This message can also contain warnings.
Customs reference declaration rejection	Sent to inform Economic Operator that the integration of the customs reference data, declared with the <i>AirTransportInformation</i> message, was failed. This message also informs Economic Operator about the errors and/or warnings that occurred.
Information	Used to send information (warnings or errors) about the evolution of the customs reference process.

3.2 Goods Process Messages

3.2.1 AirManifestInformation – Manifest

The *AirManifestInformation* message is used to send data associated with goods. It's also used to request the finalization of manifests.

The message sender is Economic Operator and the recipient is SDS Air Transport.

The table identifies the operations that Economic Operator can perform with this message:

Operation	Objective
Declare Load / Unload / Transit Manifest	Declare information related to the documents / goods items in loading, unloading or transit.
Change Load / Unload / Transit Manifest	Change information related to the documents / goods items in loading, unloading or transit.
Rectify Load / Unload / Transit Manifest	Rectify information related to the documents / goods items in loading, unloading or transit, after manifest finalization.
Finalize Load / Unload / Transit Manifest	Finalize manifest.

The message is the same for all the operations above, only some elements change according to the action we want to perform.

3.2.2 AirManifestResponse – Manifest Response

This message is used to respond to *AirManifestInformation* message.

The message origin point is SDS Air Transport and the recipient is the Economic Operator that declared the manifest, with the *AirManifestInformation* message.

The following table identifies the situations when SDS Air Transport can send this message:

Operation	Objective
Accept transport document	Used when manifested data are according to specification and don't have validation errors. The data integration occurs by transport document and is necessary that all its data and its equipments, its items and documents associated with items don't have validation errors.
Reject transport document	If there are any irregularities preventing the integration of data in the SDS Air Transport, this sends an <i>AirManifestResponse</i> message to the Economic Operator identifying the irregularities. The rejection occurs by transport document when exist at least one validation error associated with it or its equipments, or its items or documents associated with items.

In this message can occur at the same time the integration of some transport documents (that don't have validation errors) and the rejection of other transport documents (that have validation errors).

4 XML Messages Format Rules

4.1 Version

The messages use the W3C Standard version 1.0, “*Extensible Markup Language (XML) 1.0 (Third Edition) - W3C Recommendation 04-02-2004*”, which can be consulted in: <http://www.w3.org/TR/REC-xml>.

4.2 Encoding

The XML file must indicate the encoding type in the first line of file (UTF-8).

Example: `<?xml version="1.0" encoding="UTF-8"?>`

According to W3C Standard, when encoding type it's not defined, is used the UTF-8 and the file must be save in this option.

Example: `<?xml version="1.0"?>`

4.3 Data type and Notation

The following table details the notation used to represent data types used in the XML messages.

Notation	Data Type
a	Alphabetical
an	Alphanumeric
n	Numeric
a2	Alphabetical with 2 characters
an3	Alphanumeric with 3 characters
n4	Numeric with 4 digits
an..11	Alphanumeric until 11 characters
n11.3	Numeric with 11 digits and 3 decimal places
n4..14	Numeric between 4 and 14 digits

4.4 Message Structure

4.4.1 AirTransportInformation

The main elements of XML *AirTransportInformation* message are:

Field Name	XML Tag	Business Rules
Message Information	MessageInformation	PMT0012
Customs Reference Information	CustomsProcess	
Airport Authority Information	AirportAuthorityProcess	PMT0011
Transport Information	Transport	PMT00
Flight Information	Flight	-
Route Information	Route	-
Arrival Information	Arrival	PMT0025
Departure Information	Departure	-
Manifests Information	Manifests	PMT0053, PMT0055, PMT0069
Entities Information	Entities	PMT0004, PMT0092, PMT0094, PMT0100, PMT0104, PMT0106, PMT0155
Cargo Agents Information	CargoAgents	PMT0128, PMT0129, PMT0130, PMT0146

Next are described the data types of some message elements:

MessageInformation

Field Name	XML Tag	Data Type	Field Value	Business Rules
Message Identification	MessageIdentification	an..35	Alphanumeric value with a maximum of 35 characters.	-
Message date / time	MessageDate	an19	Alphanumeric value with 19 characters. Format YYYY-MM-DD HH:MM:SS.	-
Message sender	MessageSender	an..20	Alphanumeric value with a maximum of 20 characters, which represents the message sender. The format must be <country code>/<identification type>/<identification number>	-

Field Name	XML Tag	Data Type	Field Value	Business Rules
Customs reference number	CustomsReferenceNumber	n4..14	Numeric value between 4 and 14 digits. The possible values are: Customs reference creation – EEEV Other situations: EEEVYYYYNNNNNN In which: EEE – Customs office V – Transport mode YYYY – Year	PMT0013
Previous customs reference number	PreviousCustomsReferenceNumber	n14	Numeric value with 14 digits. The format is: EEEVYYYYNNNNNN In which: EEE – Customs office V – Transport mode YYYY – Year This element is optional.	PMT0036, PMT0037
Action on customs reference	Action		Possible values: Creation – “Create” Change – “Update” Creation and Finalization – “CreateAndFinalize” Change and Finalization – “UpdateAndFinalize” Rectification – “Rectify”	-
				PMT0147

AirportAuthorityProcess

Field Name	XML Tag	Data Type	Field Value	Business Rules
Airport Authority code	AirportAuthorityCode	an..35	Airport Authority identifier with a maximum of 35 characters.	PMT0015, PMT0016
Airport code	AirportCode	a5	<p>Airport identifier with 5 characters.</p> <p>This code must obey to IATA codification. The format is <country><airport></p> <p>In which:</p> <p><country> - country code with 2 alphabetic characters.</p> <p><airport> – airport identifier with 3 alphabetic characters.</p>	PMT0016, PMT0153
Airport Authority reference number	AirportAuthorityReferenceNumber	an..35	<p>Number which identifies the airport authority in the transport process.</p> <p>This value must have a maximum of 35 characters.</p>	PMT0018

Transport

Field Name	XML Tag	Data Type	Field Value	Business Rules
Transport type	TransportType		<p>Possible values:</p> <p>Airplane – “AirTransport”</p>	PMT0415
Transport identification	TransportIdentification	an..35	Alphanumeric value with a maximum of 35 characters.	PMT0423, PMT0424, PMT0425

Flight

Field Name	XML Tag	Data Type	Field Value	Business Rules
Flight Number	FlightNumber	an..35	Alphanumeric value with a maximum of 35 characters. It can occur more than one time. When defined more than one flight number the flight is shared.	PMT0151
Flight Type	FlightType		Possible values: "PassengerScheduled" "PassangerAdditional" "PassengerCharter" "CargoMailAditional" "GeneralAviationPrivate" "CargoMailScheduled" "CargoMailCharter" "PassengerCharterRequiring" "SearchRescue" "BusinessAviationAirTaxi" "AerialWork" "MedicalCareAssistence" "Emergency" "Military"	PMT0022, PMT0023
Traffic Distribution	TrafficDistribution		Possible values: "Departure" "Arrival"	PMT0133
Flight Classification	FlightClassification		Possible values: International Flight – "International" Inside Schengen Space Flight – "InSchengen" Outside Schengen Space Flight – "OutSchengen" Local Flight – "Local"	PMT01
Operation Type	OperationType		Possible values: Commercial Scale – "ComercialScale" Technical Scale –	PMT0065, PMT0066, PMT0067,

			"TechnicalScale" Switching – "Switching" Return – "Return" Ferry – "Ferry" Tourism – "Turism" Test, Instruction or Training – "TestOrInstructionOrTraining" Other – "Other"	PMT0135, PMT0139, PMT0140, PMT0141, PMT0142, PMT0143, PMT0144
Airplane Type	AirPlaneType		Possible values: "Passangers" "Mixed" "Cargo"	PMT0136
Flight Nature	Nature		Possible values: "PassengerScheduled" "PassengerAdditionalFlight" "PassengerCharter" "PassengerCharterRequiring SpecialHandling" "CargoMailSchedule" "CargoMailAdditionalFlight" "CargoMailCharter" "TáxiFlight" "AerialWork" "Private" "SearchAndRescue" "MedicalCareAndAssistance" "Emergency" "PortugueseAirForce" "ForeignAirForce" "PortugeseState" "ForeignState" "OtherMovements"	

Route



Field Name	XML Tag	Data Type	Field Value	Business Rules
Origin Airport Code	OriginAirportCode	a5	<p>Airport identifier with 5 characters.</p> <p>This code must obey to IATA codification, which format is <country><airport></p> <p>In which</p> <p><country> - country code with 2 alphabetic characters.</p> <p><airport> – airport identifier with 3 alphabetic characters.</p>	PMT0065, PMT0066, PMT0067, PMT0072, PMT0137, PMT0156, PMT0161
Previous Scale Airport Code	PreviousScaleAirportCode	a5	<p>Optional airport identifier with a maximum of 5 characters.</p> <p>The format is the same of origin airport code.</p>	PMT0073, PMT0156, PMT0160, PMT0161
Next Scale Airport Code	NextScaleAirportCode	a5	<p>Optional airport identifier with a maximum of 5 characters.</p> <p>The format is the same of origin airport code.</p>	PMT0075, PMT0157, PMT0158, PMT0159
Destiny Airport Code	DestinyAirportCode	a5	<p>Optional airport identifier with a maximum of 5 characters.</p> <p>The format is the same of origin airport code.</p>	PMT0065, PMT0066, PMT0067, PMT0076, PMT0138, PMT0157, PMT0159
Next Airport Expected Arrival Date	NextAirportExpectedDateOfArrival	an19	Alphanumeric value with 19 characters. Format YYYY-MM-DD HH:MM:SS	PMT0040

Arrival

Field Name	XML Tag	Data Type	Field Value	Business Rules
Arrival Expected Place	ExpectedPlaceOfArrival	an..35	Alphanumeric value between 0 and 35 characters.	PMT0032, PMT0022
Arrival Effective Place	EfectivePlaceOfArrival	an..35	Alphanumeric value between 0 and 35 characters.	PMT0033, PMT0065, PMT0066, PMT0067
Arrival Scheduled Date	ScheduledDateOfArrival	an19	Alphanumeric value with 19 characters. Format YYYY-MM-DD HH:MM:SS	PMT0002, PMT0024, PMT0040, PMT0068
Arrival Expected Date (updated)	ExpectedDateOfArrival	an19	Alphanumeric value with 19 characters. Format YYYY-MM-DD HH:MM:SS	PMT0066, PMT0067, PMT0150
Arrival Effective Date	EfectiveDateOfArrival	an19	Alphanumeric value with 19 characters. Format YYYY-MM-DD HH:MM:SS	PMT0003, PMT0038

Departure

Field Name	XML Tag	Data Type	Field Value	Business Rules
Departure Expected Date	ExpectedDateOf Departure	an19	Alphanumeric value with 19 characters. Format YYYY-MM-DD HH:MM:SS	PMT0008, PMT0065, PMT0066, PMT0067, PMT0068
Departure Effective Date	EfectiveDateOfD eparture	an19	Alphanumeric value with 19 characters. Format YYYY-MM-DD HH:MM:SS	PMT0005, PMT0006, PMT0007, PMT0008

Manifests

Field Name	XML Tag	Data Type	Field Value	Business Rules
Manifest Type	ManifestType		Possible values: "Negative" "Load" "Unload" "Transit"	PMT0042, PMT0043, PMT0044, PMT0045, PMT0142, PMT0143
Cargo Type	CargoType		Possible values: "General" "Express" "Combined"	PMT0052, PMT0054
Load Place	LoadPlace	an..35	Alphanumeric value with a maximum of 35 characters. The element can occur between 0 and 99 times.	PMT0056, PMT0061, PMT0062, PMT0063, PMT0064
Unload Place	UnloadPlace	an..35	Alphanumeric value with a maximum of 35 characters. The element can occur between 0 and 99 times.	PMT0056, PMT0057, PMT0058, PMT0059,

				PMT0060
Load Total Gross Mass	LoadTotalGrossMass	n11.3	Numeric value with 11 digits and 3 decimal places.	PMT0119, PMT0120
Load Total Number of Packages	LoadTotalNumberOfPackages	n1..9	Numeric value between 1 and 9 digits.	PMT0119
Unload Total Gross Mass	UnloadTotalGrossMass	n11.3	Numeric value with 11 digits and 3 decimal places.	PMT0116, PMT0117, PMT0118, PMT0131
Unload Total Number of Packages	UnloadTotalNumberOfPackages	n1..9	Numeric value between 1 and 9 digits.	PMT0116
Unload Total Number of Mail Bags	UnloadTotalNumberOfMailBags	n1..9	Numeric value between 1 and 9 digits.	
Transit Total Gross Mass	TransitTotalGrossMass	n11.3	Numeric value with 11 digits and 3 decimal places.	PMT0118, PMT0121, PMT0122
Transit Total Number of Packages	TransitTotalNumberOfPackages	n1..9	Numeric value between 1 and 9 digits.	PMT0121

Entities

The Entities element is a complex type composed of a sequence of Entity and SimplifiedProcedure type elements. It may contain between 1 and 6 elements.

Each Entity element is composed of the following:

Field Name	XML Tag	Data Type	Field Value	Business Rules
Entity Role	EntityRole		Possible values: "EntryAirCompany" "ExitAirCompany" "Captain" "EntryAirCompanyRepresentative" "ExitAirCompanyRepresentative" "AirCompanyRepresentativeRepresentative"	PMT0081, PMT0082, PMT0083, PMT0093, PMT0095, PMT0096, PMT0097, PMT0098, PMT0102, PMT0103, PMT0105,
Entity Name	EntityName	an..35	Alphanumeric value with a maximum of 35 characters.	PMT0079, PMT0091
Entity Nationality	EntityNationality	a2	Alphabetic value with 2 characters, which represents the country code.	PMT0078, PMT0084, PMT0087, PMT0090, PMT0091, PMT0099
Entity Identification Type	EntityIdentificationType		Possible values: Portuguese Fiscal Identification Number – "NIF" Economic Operator Registry Identification – "EORI" Identification Number – "BI" Passport – "P" NIPC – "NIPC" NIPS – "NIPS" NIEC – "NIEC" VIES – "VIES"	PMT0085, PMT0088, PMT0089, PMT0101

Entity Identification Number	EntityIdentificationNumber	an..35	Alphanumeric value with a maximum of 35 characters.	PMT0080, PMT0086, PMT0113, PMT0114
------------------------------	----------------------------	--------	---	------------------------------------

Each SimplifiedProcedure element is composed of the following:

Field Name	XML Tag	Data Type	Field Value	Business Rules
Simplified Procedure Number	Number	an..35	Alphanumeric value with a maximum of 35 characters.	PMT0154
Simplified Procedure Date	Date	an10	Alphanumeric value with 10 characters. Format YYYY-MM-DD	PMT0154
Emission Entity	EmissionEntity	an8	Alphanumeric value with 8 characters that represents the customs office.	PMT0154

CargoAgents

The CargoAgents element is a complex type composed of a sequence of CargoAgent type elements. It may contain between 1 and 99 elements. Each CargoAgent element is composed of the following:

Field Name	XML Tag	Data Type	Field Value	Business Rules
Cargo Agent Name	CargoAgentName	an..35	Alphanumeric value with a maximum of 35 characters.	-
Cargo Agent Nationality	CargoAgentNationality	a2	Alphabetic value with 2 characters, which represents the country code.	PMT0124
Cargo Agent Identification Type	CargoAgentIdentificationType		Possible values: Portuguese Fiscal Identification Number – “NIF” Economic Operator Registry Identification – “EORI” Identification Number – “BI” Passport – “P” NIPC – “NIPC”	PMT0124

			NIPS – “NIPS” NIEC – “NIEC” VIES – “VIES”	
Cargo Agent Identification	CargoAgentIdentification	an..35	Alphanumeric value with a maximum of 35 characters.	PMT0124
Load Gross Mass	LoadGrossMass	n11.3	Numeric value with 11 digits and 3 decimal.	PMT0124, PMT0131
Load Number of Packages	LoadNumberOfPackages	n1..9	Numeric value between 1 and 9 digits.	PMT0124, PMT0131
Unload Gross Mass	UnloadGrossMass	n11.3	Numeric value with 11 digits and 3 decimal.	PMT0124
Unload Number of Packages	UnloadNumberOfPackages	n1..9	Numeric value between 1 and 9 digits.	PMT0124
Transit Gross Mass	TransitGrossMass	n11.3	Numeric value with 11 digits and 3 decimal.	PMT0124, PMT0131
Transit Number of Packages	TransitNumberOfPackages	n1..9	Numeric value between 1 and 9 digits.	PMT0124, PMT0131
Authorized Entities in Customs reference creation	AuthorizedEntities		The value of this element represents a list composed by AuthorizedEntity elements that can occur between 0 and 99 times. The AuthorizedEntity element is composed by a group of elements, described below.	PMT0145

AuthorizedEntity

Field Name	XML Tag	Data Type	Field Value	Business Rules
Action that Authorized Entity can execute in the Customs Reference	AuthorizedEntityAction		Possible values for this element: Create Transport Documents – “TransportDocumentCreation”	-

Authorized Entity Name	AuthorizedEntity Name	an..35	Alphanumeric value with a maximum of 35 characters.	
Authorized Entity Nationality	AuthorizedEntity Nationality	a2	Alphabetic value with 2 characters, which represents the country code.	PMT0145
Authorized Entity Identification Type	AuthorizedEntityI dentificationType		<p>Possible values:</p> <p>Portuguese Fiscal Identification Number – “NIF”</p> <p>Economic Operator Registry Identification – “EORI”</p> <p>Identification Number – “BI”</p> <p>Passport – “P”</p> <p>NIPC – “NIPC”</p> <p>NIPS – “NIPS”</p> <p>NIEC – “NIEC”</p> <p>VIES – “VIES”</p>	PMT0145
Authorized Entity Identification Number	AuthorizedEntityI dentificationNum ber	an..35	Alphanumeric value with a maximum of 35 characters.	PMT0145

4.4.2 AirTransportStatus

The main XML elements of *AirTransportStatus* message are:

Field Name	XML Tag
Message Information	MessageInformation
Original Message Correlation Information (response messages)	MessageCorrelationInformation
Customs Process Information	CustomsProcess
Flight Information	FlightIdentification
Validation Errors	Errors
Warnings	Warnings

Next are described the data types of some message elements:

MessageInformation

Field Name	XML Tag	Data Type	Field Value
Message Identification	MessageIdentification	an..35	Alphanumeric value with a maximum of 35 characters.
Message Date / Time	MessageDate	an19	Alphanumeric value with 19 characters. Format YYYY-MM-DD HH:MM:SS
Message Recipient	MessageReceiver	an..20	Alphanumeric value with a maximum of 20 characters that identifies the message receiver. Format <country>/<identification type>/<identification number>

MessageCorrelationInformation



Field Name	XML Tag	Data Type	Field Value
Original Message Identifier	MessageCorrelationIdentification	an..35	Alphanumeric value with a maximum of 35 characters.
Original Message Date / Time	MessageCorrelationDate	an19	Alphanumeric value with 19 characters. Format YYYY-MM-DD HH:MM:SS
Success / Fail Identifier	MessageCorrelationValid		Value which indicates if integration of original message data was succeeded or not. Possible values: Succeed – “Yes” Failed – “No” Pending Approval / Rejection – “Pending”

Field Name	XML Tag	Data Type	Field Value
Customs Reference Identifier	CustomsReferenceNumber	n4..14	<p>Numeric value between 4 and 14 digits.</p> <p>The possible values are:</p> <p>Customs reference creation – EEEV</p> <p>Other situations:</p> <p>EEEVYYYYNNNNNN</p> <p>In which:</p> <p>EEE – Customs office</p> <p>V – Transport mode</p> <p>YYYY – Year</p>
Customs Reference State	CustomsProcessState		<p>Possible values:</p> <p>“Provisional”</p> <p>“PreActive”</p> <p>“Active”</p> <p>“Closed”</p> <p>“Ultimate”</p> <p>“Annul”</p> <p>If customs reference creation fails this element is not presented in message.</p>

FlightIdentification

Field Name	XML Tag	Data Type	Field Value
Transport Identification	TransportIdentification	an..35	Alphanumeric value with a maximum of 35 characters.
Arrival Scheduled Date	ScheduledDateOfArrival	an19	Alphanumeric value with 19 characters. Format YYYY-MM-DD HH:MM:SS
Departure Scheduled Date	ScheduledDateOfDeparture	an19	Alphanumeric value with 19 characters. Format YYYY-MM-DD HH:MM:SS
Airport Code	AirportCode	a5	Alphabetic value with 5 characters.

Errors

This element is optional in *AirTransportStatus* message. When it occurs is composed by Error type elements (between 1 and 9999 elements). Next table describes the Error element:

Field Name	XML Tag	Data Type	Field Value
Rule Code	RuleCode	an..35	Alphanumeric value with a maximum of 35 characters.
Error Code	ErrorCode	n4	Numeric value with 4 digits.
Error description	ErrorDescription	an..250	Alphanumeric value with a maximum of 250 characters.

Warnings

This element is optional in *AirTransportStatus* message. When it occurs is composed by Warning type elements (between 1 and 9999 elements). Next table describes the Warning element:

Field Name	XML Tag	Data Type	Field Value
Rule Code	RuleCode	an..35	Alphanumeric value with a maximum of 35 characters.
Warning Code	WarningCode	n4	Numeric value with 4 digits.
Warning Description	WarningDescription	an..250	Alphanumeric value with a maximum of 250 characters.

4.4.3 AirManifestInformation

AirManifestInformation message consists of a complex type (*manifestType*) composed by the following elements:

Field Name	XML Tag	Business Rules
Message Information	MessageInformation	-
Customs Process Information	CustomsProcess	PM0092
Entities Information	Entities	PM0003, PM0004, PM0005, PM0018, PM0103, PM0182, PM0242
Simplified Process Information	AuthorizedConsignorCTP	PM0223, PM0224, PM0225
Transport Document Information	TransportDocumentList	PM0001, PM0183, PM0184, PM0188
		PM0016, PM0017, PM0181, PM0187

The *manifestType* has an attribute (*Action*) that indicates the action to perform in manifest.

Possible values:

Possible values:

Finalize load manifest – “FinalizeLoadManifest”

Finalize unload manifest – “FinalizeUnloadManifest”

Finalize transit manifest – “FinalizeTransitManifest”

None – “None”

Next are described the data types of some elements:

MessageInformation

Field Name	XML Tag	Data Type	Field Value	Business Rules
Message Identification	MessageIdentification	an..35	Alphanumeric value with a maximum of 35 characters.	-
Message Date / Time	MessageDate	an19	Alphanumeric value with 19 characters. Format YYYY-MM-DD HH:MM:SS	-
Message sender	MessageSender	an..20	Alphanumeric value with a maximum of 20 characters that identifies the message sender. Format <country>/<identification type>/<identification number>	-

CustomsProcess

Field Name	XML Tag	Data Type	Field Value	Business Rules
Customs Reference Number	CustomsReferenceNumber	n14	Numeric value with 14 digits. The format is: EEEVYYYYNNNNNN In which: EEE – Customs office V – Transport mode YYYY – Year	PM0240

Entities

Field Name	XML Tag	Data Type	Field Value	Business Rules
Representative Identification	RepresentativeIdentification	an..50	Possible values: Portuguese Representative (NIF) – numeric value with 9 digits Representative with another nationality - alphanumeric value with a maximum of 50 characters	PM0007, PM0242
Carrier Identification	CarrierIdentification	an..20	Alphanumeric value with a maximum of 20 characters and format <country>/<identification type>/<identification number>	PM0242
Forwarder Identification	ForwarderIdentification	an..20	Alphanumeric value with a maximum of 20 characters and format <country>/<identification type>/<identification number>	PM0242

AuthorizedConsignorCTP

Field Name	XML Tag	Data Type	Field Value	Business Rules
Document Number	Number	an	Alphanumeric value.	PM0221
Emission Year	Year	n4	Numeric value with 4 digits and format YYYY.	PM0221
Document Emitting Entity	EmittingEntity	an	Alphanumeric value which represents the Emitting Entity.	PM0221
Simplified Procedure for Community Transit Level	Level		Possible values: Level I – “1” Level II – “2”	PM0221

TransportDocumentList

A TransportDocumentList is composed by some TransportDocument items. Next are described the transport document elements:

Field Name	XML Tag	Data Type	Field Value	Business Rules
Customs Document Number	CustomsDocumentNumber	an23	Alphanumeric value with a maximum of 23 characters, optional only in creation. Format: PPPPPEEEVYYYYNNNNN NDDDD. In which: PPPPP – Customs Reference Registry Airport EEE – Customs Office V – Transport Mode YYYY – Year NNNNNN – Customs Reference Number DDDD – Transport Document Number	PM0241, PM0001, PM0031
External Document Number	ExternalDocumentNumber	an	Alphanumeric value.	-
Document	DocumentNumb	an	Alphanumeric value.	PM0012,

Number	er			PM0031, PM0032, PM0241
Document Type	DocumentType	an..4	Alphanumeric value with a maximum of 4 characters.	PM0008, PM0009, PM0031, PM0032, PM0033, PM0241
Document Emission Place	DocumentEmissionLocal	an	Alphanumeric value.	PM0014, PM0031, PM0241,
Document Emission Date	DocumentEmissionDate	an19	Alphanumeric value with 19 characters. Format YYYY-MM-DD HH:MM:SS	PM0012, PM0013, PM0031, PM0032
Document Emission Entity	DocumentEmissionEntity	an	Alphanumeric value which represents the Emission Entity.	PM0012, PM0031
Document Year	DocumentYear	n4	Numeric value with 4 digits and format YYYY.	PM0010, PM0032
Document Country	DocumentCountry	a2	Alphabetic value with 2 characters. The format must obey ISO 3166 standard.	PM0011, PM0032
Manifest Type	ManifestType		Possible values: Load Manifest – “C” Unload Manifest – “D” Transit Manifest – “TR”	PM0022, PM0023, PM0026
Booking Number	BookingNumber	an30	Alphanumeric value with a maximum of 30 characters.	-
Original Customs Document	OriginalTransportDocument		Value composed by some documentUnfolding elements which are described below.	
Destiny Airport Code	DestinationAirport	a5	Airport identifier with 5 characters. This code must obey to IATA codification. The format is <country><airport> In which:	PM0025, PM0241, PM0029

			<country> - country code with 2 alphabetic characters. <airport> – airport identifier with 3 alphabetic characters.	
Transit Airport Code	TransitAirport	a5	Airport identifier with 5 characters. The format is the same as Destiny Airport Code.	PM0034
Origin Airport Code	OriginAirport	a5	Airport identifier with 5 characters. The format is the same as Destiny Airport Code.	PM0019, PM0024, PM0097, PM0111, PM0112, PM0029
Transport Document Item List	ItemList		Value composed by some Item elements which are described below.	PM0189
CTU Indicator	Ctu		Possible values: Has CTU – “Yes” Don’t has CTU – “No”	PM0015, PM0033
CTU Export Indicator	CtuExport		Possible values: Has CTU Export – “Yes” Don’t has CTU Export – “No”	PM0015
Customs House of Certification	CustomsHouseOfCertification	an	Alphanumeric value.	-
Justification	Justification	an	Alphanumeric value.	

The TransportDocument element has an attribute (*ActionDocumentType*) that identifies the action to perform in the document. The possible values are:

- Create new document – “Create”
- Modify data from a document – “Update”
- Remove document – “Delete”
- None –“None”

The “None” option must be used to realize operations in sub elements.

Field Name	XML Tag	Data Type	Field Value	Business Rules
Customs Document Number	CustomsDocumentNumber	an23	Alphanumeric value with a maximum of 23 characters, optional only in creation. Format: PPPPPEEEVYYYYNNNNN NDDDD. In which: PPPPP – Customs Reference Registry Airport EEE – Customs Office V – Transport Mode YYYY – Year NNNNNN – Customs Reference Number DDDD – Transport Document Number	PM0241
Document Number	DocumentNumber	an	Alphanumeric value.	PM0241
Document Type	DocumentType	an..4	Alphanumeric value with a maximum of 4 characters.	PM0241
Document Emission Place	DocumentEmissionLocal	an	Alphanumeric value.	PM0241
Document Emission Date	DocumentEmissionDate	an19	Alphanumeric value with 19 characters. Format YYYY-MM-DD HH:MM:SS	PM0241
Document Emission Entity	DocumentEmissionEntity	an	Alphanumeric value which represents the Emission Entity.	PM0241

DocumentUnfolding may contain only the *CustomsDocumentNumber*. If this value is not indicated it is necessary to indicate all other elements.

Item

Field Name	XML Tag	Data Type	Field Value	Business Rules
Customs Item Number	CustomsItemNumber	an	Alphanumeric value. Format: PPPPPEEEVYYYYNNNNN NDDDDL. In which: PPPP – Customs Reference Registry Airport EEE – Customs Office V – Transport Mode YYYY – Year NNNNN – Customs Reference Number DDDD – Transport Document Number LL – Item Sequential Number	PM0080, PM0081, PM0120
External Item Number	ExternalItemNumber	an	Alphanumeric value.	-
Pal Item Number	PaltemNumber	an	Alphanumeric value.	-
Customs Status	CustomsStatus	an	Alphanumeric value.	PM0105
Original Shipper Identification	OriginalShipperIdentification	an..20	Alphanumeric value with a maximum of 20 characters and format <country>/<identification type>/<identification number>	PM0107, PM0113, PM0114
Original Shipper Name	OriginalShipperName	an	Alphanumeric value.	PM0113, PM0114
Original Shipper Address	OriginalShipperAddress	an	Alphanumeric value.	PM0113, PM0114
Shipper Identification	ShipperIdentification	an..20	Alphanumeric value with a maximum of 20 characters and format <country>/<identification type>/<identification number>	PM0113, PM0114
Shipper Name	ShipperName	an	Alphanumeric value.	PM0113, PM0114
Shipper Address	ShipperAddress	an	Alphanumeric value.	PM0113,

				PM0114
Addressee Identification	AddresseeIdentification	an..20	Alphanumeric value with a maximum of 20 characters and format <country>/<identification type>/<identification number>	PM0107
Addressee Name	AddresseeName	an	Alphanumeric value.	PM0113, PM0114
Addressee Address	AddresseeAddress	an	Alphanumeric value.	PM0113, PM0114
NotifyParty Identification	NotifyPartyIdentification	an..20	Alphanumeric value with a maximum of 20 characters and format <country>/<identification type>/<identification number>	PM0099, PM0106, PM0113, PM0114
NotifyParty Name	NotifyPartyName	an	Alphanumeric value.	-
NotifyParty Address	NotifyPartyAddress	an	Alphanumeric value.	-
Consignor Identification	ConsignorIdentification	an..20	Alphanumeric value with a maximum of 20 characters and format <country>/<identification type>/<identification number>	PM0113, PM0114 PM0107
Consignor Name	ConsignorName	an	Alphanumeric value.	-
Consignor Address	ConsignorAddress	an	Alphanumeric value.	-
Detailed Description	DetailedDescription	an	Alphanumeric value.	PM0086
Traffic Classification	TariffClassification	an	Alphanumeric value.	PM0107, PM0106
Marks and Numbers	MarksAndNumbers	an	Alphanumeric value.	PM0088
Package Type	PackageType	an..2	Alphanumeric value with a maximum of 2 characters.	PM0087, PM0108
Quantity	Quantity	n	Decimal value.	PM0084, PM0089, PM0094, PM0095,

				PM0096, PM0107
Customs Value	CustomsValue	n	Decimal value.	-
Relief From Duty	ReliefFromDuty	n	Possible values: 23, 25, 42, 86, 87, 89, 103 and 104	-
Gross Weight	GrossWeight	n	Decimal value.	PM0090, PM0096
Volume	Volume	n	Decimal value.	PM0087, PM0108
Cargo Type	CargoType	an..3	Alphanumeric value with a maximum of 3 characters.	PM0083, PM0084, PM0094, PM0095, PM0109
Outgoing Information	OutgoingInformation		This element is only applied for transshipment and unload manifests. The value is composed by some InOutInformation elements described below.	-
Incoming Information	IncomingInformation		This element is only applied for transshipment and load manifests. The value is composed by some InOutInformation elements described below.	
Goods Location	GoodsMovementPlace	an	Alphanumeric value with the following format <country><airport><place>	PM0102, PM0110
Origin Airport	OriginAirport	a5	Airport identifier with 5 characters. This code must obey to IATA codification. The format is <country><airport> In which: <country> - country code with 2 alphabetic characters. <airport> – airport identifier with 3 alphabetic characters.	PM0097, PM0111
Warehousekeeper Identification	WarehouseKeeper	an..50	Possible values: Portuguese (NIF) – numeric value with 9 digits	-

			Another nationality - alphanumeric value with a maximum of 50 characters	
Poseima	Poseima		Possible values: With POSEIMA – “Yes” Without POSEIMA – “No”	PM0082
Original Item	OriginalItem		<i>ItemUnfoldingType</i> element with format: PPPPPEEEVYYYYNNNN NDDDLL. In which: PPPPP – Customs Reference Registry Airport EEE – Customs Office V – Transport Mode YYYY – Year NNNNN – Customs Reference Number DDDD – Transport Document Number LL – Item Sequential Number	-
Chassis List	ChassisList		This element is a list of chassis numbers. The chassis numbers are alphanumeric values.	PM0085
Associated Document List	DocumentList		This value is a list of ItemDocument elements that can occur 0 or more times. The ItemDocument elements are composed by a group of other elements described below.	PM0125
Manifest Proofs Community Status	ManifestProofsCommunityStatus		Possible values: Need PCC – “Yes” Don’t need PCC – “No”	-

The *Item* element contains an attribute (*Action*) that identifies the action to perform. Possible Values:

Create new – “Create”

Modify data – “Update”

Remove - “Delete”

None –“None”

The “None” option must be used to realize operations in sub elements.

ItemDocument

Field Name	XML Tag	Data Type	Field Value	Business Rules
Document Type	Type	an	Alphanumeric value.	PM0122
Item Document Number	Number	an	Alphanumeric value.	PM0121
Emission Date	EmissionDate	an19	Alphanumeric value with 19 characters. Format YYYY-MM-DD HH:MM:SS	PM0123
Emission Entity	EmissionEntity	an	Alphanumeric value.	PM0124
Embarkment Situation	EmbarkmentSituation		Possible values: Total – “T” Partial – “P” Rest – “R”	-

ItemDocument has an attribute (*Action*) that defines the action to perform. Possible values:

Create new – “Create”

Modify data – “Update”

Remove - “Delete”

None –“None”

The “None” option must be used to realize operations in sub elements.

Field Name	XML Tag	Data Type	Field Value	Business Rules
Customs Transport Number	CustomsTransportNumber	n14	Numeric value with 14 digits. The format is: EEEVYYYYNNNNNN In which: EEE – Customs office V – Transport mode YYYY – Year	-
Document Number	DocumentNumber	an	Alphanumeric value.	-
Document Emission Date	DocumentEmissionDate	an19	Alphanumeric value with 19 characters. Format YYYY-MM-DD HH:MM:SS	-

4.4.4 AirManifestResponse

The main XML elements of *AirManifestResponse* message are:

Field Name	XML Tag
Message Information	MessageInformation
Message Correlation Information	MessageCorrelationInformation
Customs Process Information	CustomsProcess
System Error Messages	systemErrorMessages
Additional Messages	messages
Transport Document List	transportDocumentList
Success / Fail Information	success
Action	action

Next are described the data types of some message elements:

MessageInformation

Field Name	XML Tag	Data Type	Field Value
Message Identification	MessageIdentification	an..35	Alphanumeric value with a maximum of 35 characters.
Message Date / Time	MessageDate	an19	Alphanumeric value with 19 characters. Format YYYY-MM-DD HH:MM:SS
Message Receiver	MessageReceiver	an..20	Alphanumeric value with a maximum of 20 characters and format <country>/<identification type>/<identification number>

MessageCorrelationInformation

Field Name	XML Tag	Data Type	Field Value
Message Correlation Identification	MessageCorrelationIdentification	an..35	Alphanumeric value with a maximum of 35 characters.
Original Message Date / Time	MessageCorrelationDate	an19	Alphanumeric value with 19 characters. Format YYYY-MM-DD HH:MM:SS
Success / Fail Identifier	MessageCorrelationValid		Value which indicates if integration of original message data was succeeded or not. Possible values: Succeed – “Yes” Failed – “No” Pending Approval / Rejection – “Pending”

CustomsProcess

Field Name	XML Tag	Data Type	Field Value
Customs Reference Number	CustomsReferenceNumber	n14	Numeric value with 14 digits. The format is: EEEVYYYYNNNNNN In which: EEE – Customs office V – Transport mode YYYY – Year
Manifest Action	Action		Possible values: Finalize load manifest – “FinalizeLoadManifest” Finalize unload manifest – “FinalizeUnloadManifest” Finalize transit manifest – “FinalizeTransitManifest” None – “None”

SystemErrorMessage

Field Name	XML Tag	Data Type	Field Value
System Error Messages List	SystemErrorMessages		This value is a list of Message elements that can occur 0 or more times. The Message elements are composed by a group of other elements described below.

ApplicationMessages

Field Name	XML Tag	Data Type	Field Value
Error List	Errors		This value is a list of Message elements that can occur 0 or more times. The Message elements are composed by a group of other elements described below.
Warning List	Warnings		This value is a list of Message elements that can occur 0 or more times. The Message elements are composed by a group of other elements described below.

Message

Field Name	XML Tag	Data Type	Field Value
Rule Code	RuleCode	an..35	Alphanumeric value with a maximum of 35 characters.
Message Code	MessageCode	n4	Numeric value with 4 digits
Message Description	MessageDescription	an..250	Alphanumeric value with a maximum of 250 characters.

TransportDocumentList

This element is a list of transportDocument elements.

Each transportDocument is composed by the following elements:

Field Name	XML Tag	Data Type	Field Value
Customs Document Number	CustomsDocumentNumber	an23	Alphanumeric value with a maximum of 23 characters, optional only in creation. Format: PPPPPEEEVYYYYNNNNNNDDDD. In which: PPPP – Customs Reference Registry Airport EEE – Customs Office V – Transport Mode YYYY – Year NNNNNN – Customs Reference Number DDDD – Transport Document Number
External Document Number	ExternalDocumentNumber	an	Alphanumeric value.
Application Messages	Messages		Message list composed by Message elements described in Message chapter.
Transport Document State	TransportDocumentState		Possible values: Provisory – “PRV” Pendent Items– “PEN” Active – “ACT” Finalized – “FIN” Annul – “ANU”

			If the operation was not succeeded this element doesn't exists.
Item List	ItemList		This value is a list of Item elements that can occur 0 or more times. The Item elements are composed by a group of other elements described below.
Success / Fail Indicator	Success		Possible values: Succeed – “Yes” Failed – “No” Pending Approval / Rejection – “Pending”
Action	Action		Possible values: Create new – “Create” Modify data – “Update” Remove - “Delete” None –“None”

Item

Field Name	XML Tag	Data Type	Field Value
External Item Number	ExternalItemNumber	an	Alphanumeric value.
Application Messages	Messages		Message list composed by Message elements described in Message chapter.
Item State	ItemState		Possible values: Provisory - "PRV" Annul - "ANU" Active - "ACT" Pending - "PEN" Unfolded - "DES" Unfolding - "EMD" Captive - "CAT" Cleared - "APU" Finalized - "FIN". If the operation was not succeeded this element doesn't exists.
Document List	DocumentList		This value is a list of ItemDocument elements that can occur 0 or more times. The ItemDocument elements are

			composed by a group of other elements described below.
Action	Action		Possible values: Create new – “Create” Modify data – “Update” Remove - “Delete” None –“None”
Success / Fail Identifier	Success		Possible values: Succeed – “Yes” Failed – “No” Pending Approval / Rejection – “Pending”

ItemDocument

Field Name	XML Tag	Data Type	Field Value
Document Type	Type	an	Alphanumeric value.
Document Number	Number	an	Alphanumeric value.
Emission Date	EmissionDate	an19	Alphanumeric value with 19 characters. Format YYYY-MM-DD HH:MM:SS
Application Messages	Messages		Message list composed by Message elements described in Message chapter.
Action	Action		Possible values: Create new – “Create” Modify data – “Update” Remove - “Delete” None –“None”
Success / Fail Identifier	Success		Possible values: Succeed – “Yes” Failed – “No” Pending Approval / Rejection – “Pending”